

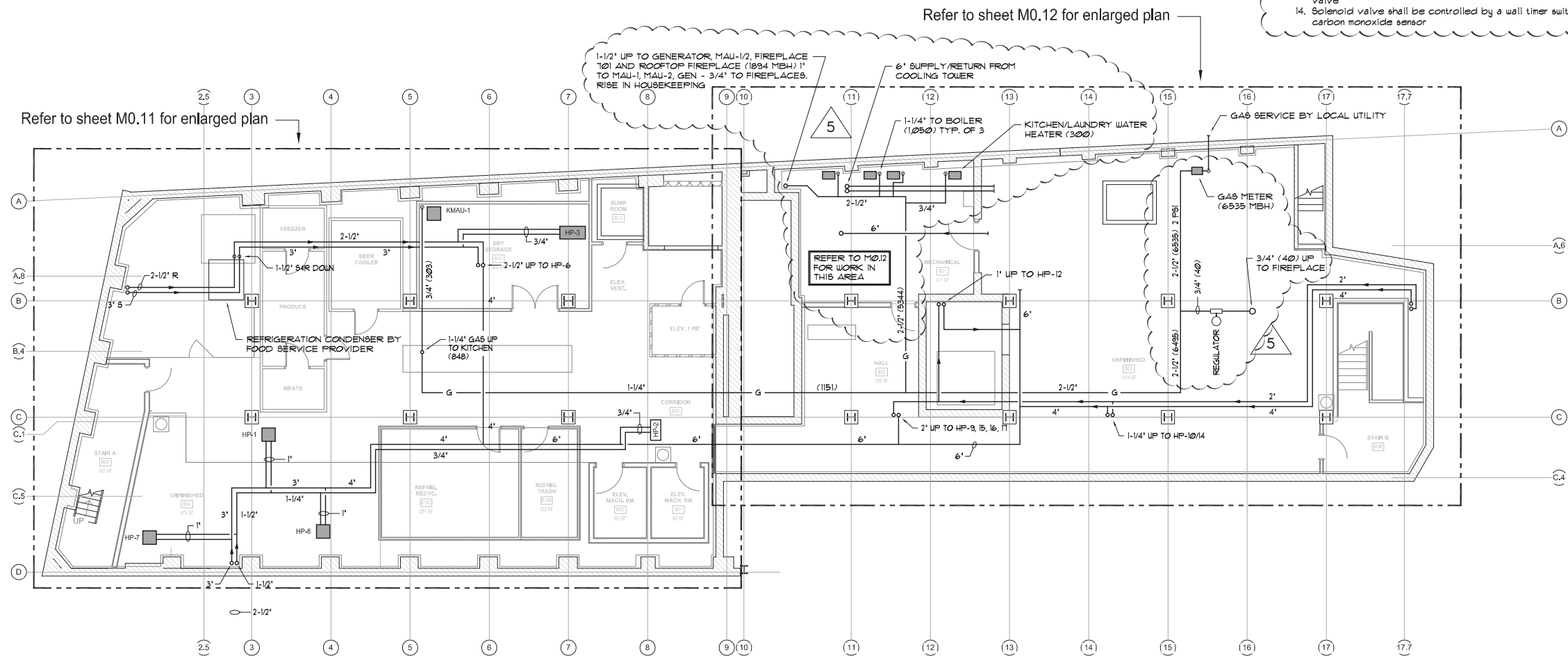
HVAC LEGEND

SYMBOL	DESCRIPTION	SYMBOL	DESCRIPTION
HP-*	WATER SOURCE HEAT PUMP DESIGNATION	(**)	GAS LOAD IN MBH
CT	COOLING TOWER	MBH	BTU / HR x 1000
FSD	FIRE/SMOKE DAMPER	FD	FIRE DAMPER
OA	OUTSIDE AIR	T (N CIRCLE)	THERMOSTAT
MAU	MAKE-UP AIR UNIT	S (N CIRCLE)	SENSOR (REMOTE THERMOSTAT)
UNO	UNLESS NOTED OTHERWISE	TYP.	TYPICAL
EW	ELECTRIC WALL HEATER	*HP-1* (TYP. ITEM)	THERMOSTAT / SENSOR FOR HP-1
EUH	ELECTRIC UNIT HEATER	EA	EACH
ECH	ELECTRIC CEILING HEATER	w/	WITH
BBH	ELECTRIC BASEBOARD HEATER	M (N SQUARE)	MOTORIZED DAMPER
HX	HEAT EXCHANGER	COMB.	COMBUSTION
P	PUMP	AFF.	ABOVE FINISHED FLOOR
F	FAN	ARCH	ARCHITECTURAL
G	GAS	MFRS	MANUFACTURER'S
CWS	CONDENSER WATER SUPPLY	STD.	STANDARD
CWR	CONDENSER WATER RETURN		
			FIRE/SMOKE DAMPER

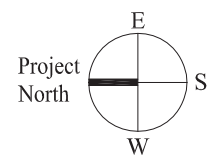
GAS EQUIPMENT SCHEDULE

EQUIPMENT	MBH	QTY	TOTAL MBH
DISPLAY KITCHEN			
ITEM-16	188	1	188
ITEM-11	60	1	60
FIREPLACES			
LOBBY	40	1	40
Guest Room 101	30	1	30
ROOF	40	1	40
BOILERS	1050	3	3150
GENERATOR	144	1	144
HVAC			
KMAU-1	303	1	303
MAU-1	540	1	540
MAU-2	540	1	540
PLUMBING			
KITCHEN/LAUNDRY WATER HEATER	300	1	300
TOTALS			6,535

- Provide dirt leg at gas meter
- Provide a dirtleg, union and shut-off valve at each equipment connection
- Gas pipe pressure is 2 psi provide pressure regulator at point of use
- All exposed gas pipe shall be painted yellow
- All gas pipe shall be identified at 10 ft intervals with labels as manufactured by Seton
- Pipe labels shall indicate gas pressure
- Provide a solenoid valve at 60" AFF in the gas line which serves each kitchen hood
- Provide a full size gas header behind each kitchen battery
- Provide a UL flex connector and shut-off valve at connection to kitchen equipment
- Provide an equipment retaining cable equal Dormont at each piece of kitchen equipment
- Refer to food service plans for additional information
- Provide valved and capped gas line for connection by fireplace installer
- Fireplaces at Guest Rooms shall include a fail close solenoid valve
- Solenoid valve shall be controlled by a wall timer switch and carbon monoxide sensor



SUB-BASEMENT PLAN - HVAC
SCALE: 1/8"=1'-0"



Prepared For:
119 DEVELOPMENT LLC

Mechanical Engineer:
Crabtree Engineering
278 Amelia Cove
Collierville, Tennessee 38017
jce98@bellsouth.net

Architect:
ARCHETYPE architects
48 Union Wharf Portland, Maine 04101
(207) 772-6022 Fax (207) 772-4056

Project:
PRESS HOTEL
390 CONGRESS STREET
PORTLAND, MAINE

Revisions:

1	13-10-14	Issue for Bid & Marriott Revw
2	13-10-21	Addendum #2
3	13-10-31	Addendum #3
4	14-03-26	RFT Items
5	14-04-14	Misc RETs

Date: 08 OCT 13
Scale: 1/8" = 1'-0"
SUB-BASEMENT PLAN - HVAC

M0.10