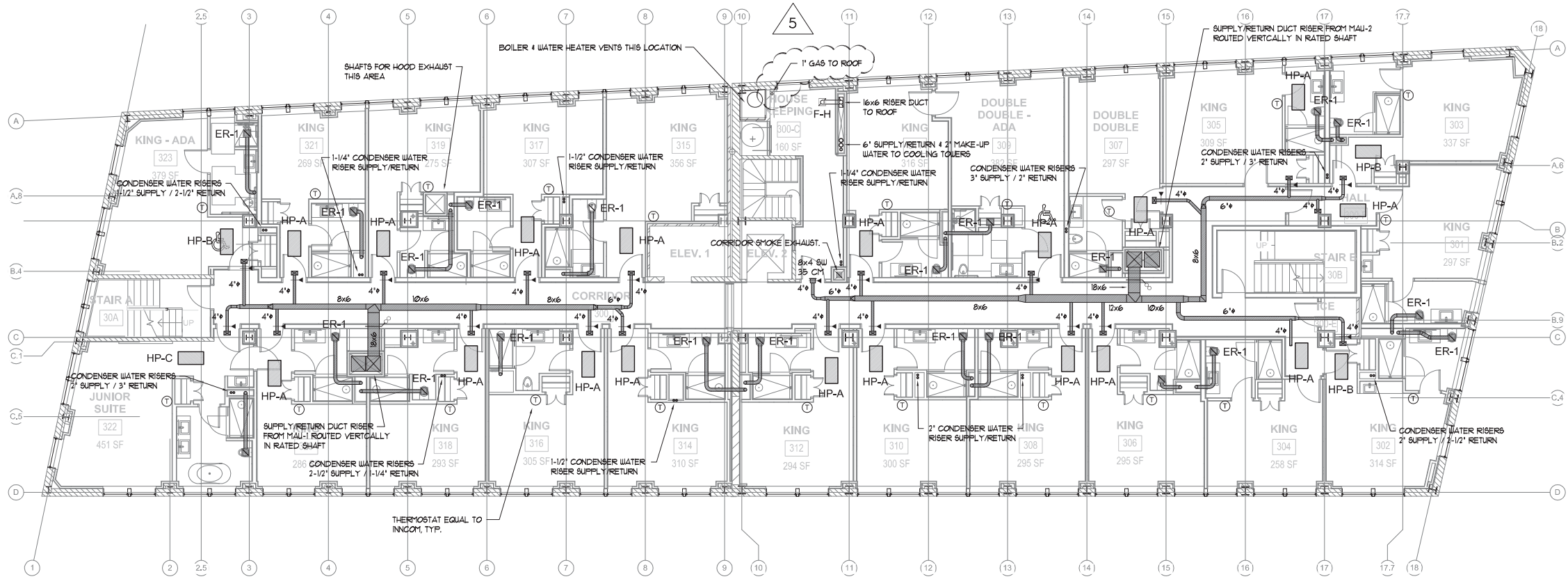
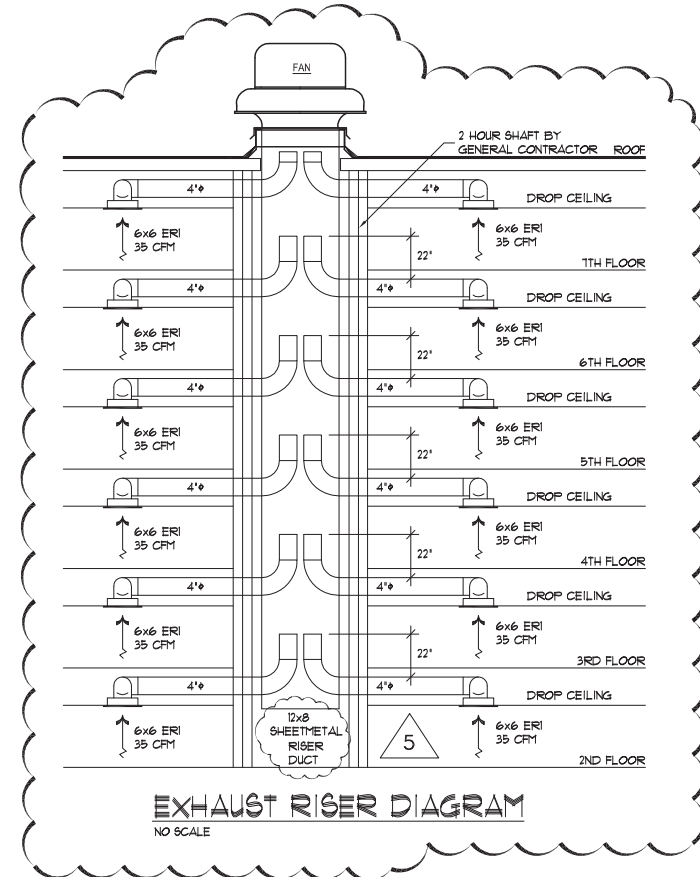
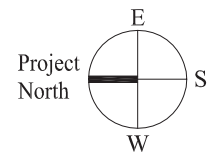


SCOPE OF WORK AT GUEST ROOMS:

1. EXTEND 3/4" CONDENSER WATER SUPPLY AND RETURN TO HP-A/HP-B FROM ADJACENT RISER.
2. EXTEND 1" CONDENSER WATER SUPPLY AND RETURN TO HP-C FROM ADJACENT RISER.
3. REFER TO PIPING DIAGRAM DETAIL FOR VALVES AND ACCESSORIES. PROVIDE AN 18x18 HINGED ACCESS PANEL. (PAINT TO MATCH) BELOW VALVES.
4. REFER TO PLUMBING PLANS FOR CONDENSATE DRAIN PIPING.
5. SUSPEND HP UNITS FROM STRUCTURE WITH THREADED ROD AND SPRING ISOLATORS.
6. PROVIDE A SUPPLY REGISTER (24x6 SW) AT FACE OF FURRED ENTRY FOR EACH HEAT PUMP. AT EAST UNITS WITH BEAM CONFLICT, PROVIDE A SLOT DIFFUSER. SLOT DIFFUSER SHALL BE 30x3 AT 'A' UNITS, SLOT DIFFUSER SHALL BE 30x4 AT 'B' UNITS, SLOT DIFFUSERS SHALL BE EQUAL TO METALAIR 6600 WITH 1" SLOT, END BORDER AND INSULATED PLENUM. REFER TO ARCH DETAIL.
7. EXTEND SHEETMETAL DUCT FROM HP TO SUPPLY REGISTER. TRANSITION DUCT FROM HP DISCHARGE TO REGISTER. INSULATE DUCT WITH 1/2" THICK CLOSED CELL ELASTOMERIC INSULATION.
8. PROVIDE FRAMING BELOW W6HP TO ALLOW FUTURE REMOVAL OF CEILING AND UNIT. REFER TO ARCH. DETAIL.
9. PROVIDE A 24x8 HINGED FILTERED RETURN GRILLE AT REAR OF UNIT, REFER TO ARCH. DETAIL.
10. PROVIDE AN INCOM E528 THERMOSTAT IN EACH GUEST ROOM. THE THERMOSTAT SHALL INCLUDE AN OCCUPANCE SENSOR, WIRED DOOR SWITCH AND ECOMODE SWITCH.
11. PROVIDE AN AMERICAN ALDES SUPPLY ABOVE CEILING AT ROOM ENTRY TO DELIVER 35 CFM TO EACH GUEST ROOM.
12. PROVIDE A 6x6 AMERICAN ALDES MODEL CER AT EACH BATHROOM TO EXHAUST 30 CFM, LOCATE ABOVE SHOWER.
13. EXTEND A 4" DUCT FROM EACH TOILET EXHAUST. TURN DUCT UP 22' IN A SHEETMETAL RISER DUCT.
14. THE RISER DUCT SHALL BE LOCATED IN A RATED SHAFT BY THE GC AND SHALL EXTEND FROM THE 2ND FLOOR TO THE ROOF AND TERMINATE AT AN EXHAUST FAN.



THIRD FLOOR PLAN - HVAC
SCALE: 1/8"=1'-0"



Prepared For:
119 DEVELOPMENT LLC

Mechanical Engineer:
Crabtree Engineering
278 Amelia Cove
Collierville, Tennessee 38017
jceb98@bellsouth.net

Architect:
ARCHETYPE
architects
48 Union Wharf Portland, Maine 04101
(207) 772-6022 Fax (207) 772-4056

Project:
PRESS HOTEL
390 CONGRESS STREET
PORTLAND, MAINE

Revisions:

1	13-10-14	Issue for Bid & Marriott Rev
2	13-10-21	Addendum #2
3	13-10-31	Addendum #3
5	14-04-14	Misc RT's

Date: 08 OCT 13
Scale: 1/8" = 1'-0"
**THIRD FLOOR
HVAC PLAN**

M3.00