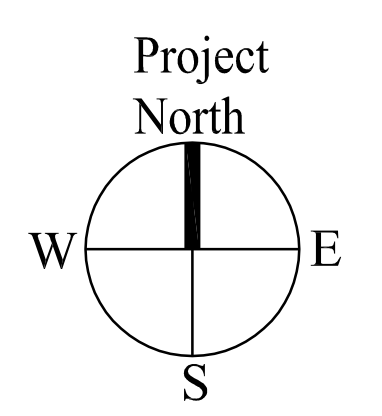
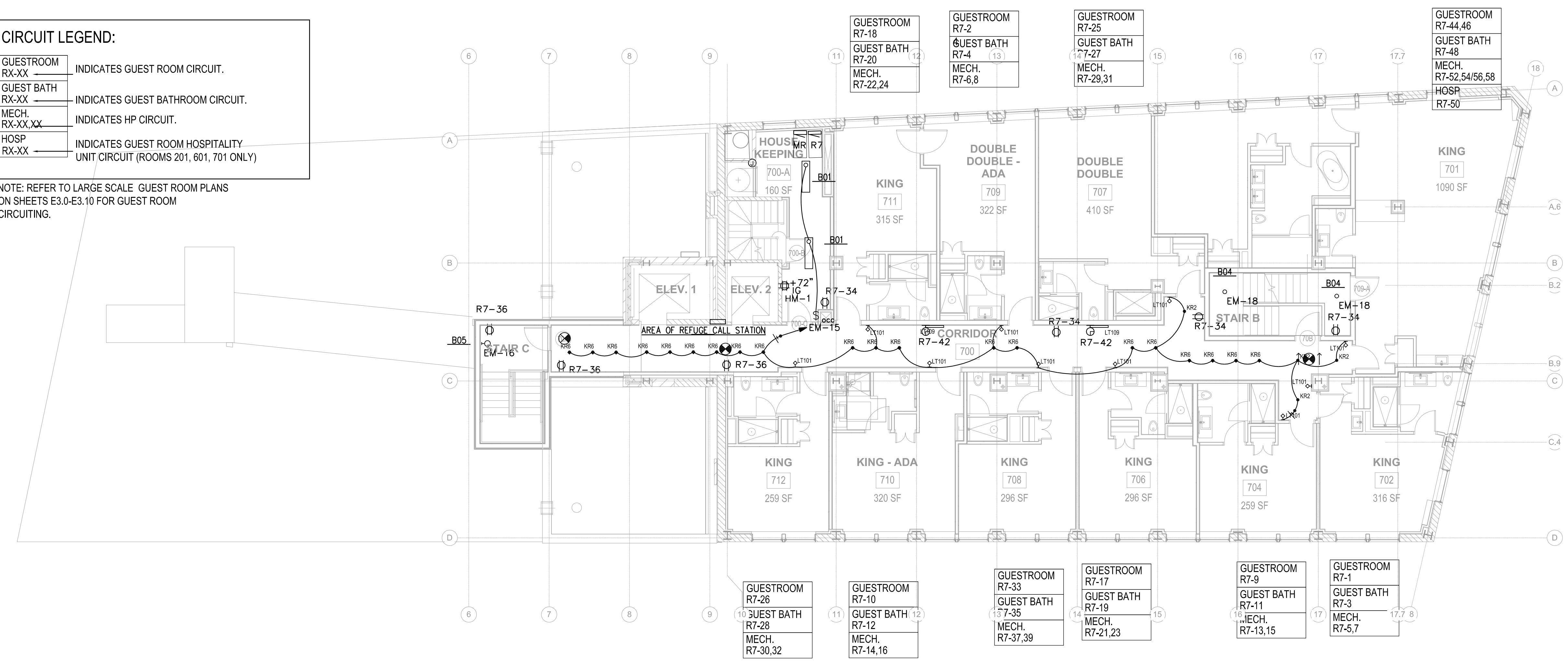


CIRCUIT LEGEND:

GUESTROOM RX-XX	INDICATES GUEST ROOM CIRCUIT.
GUEST BATH RX-XX	INDICATES GUEST BATHROOM CIRCUIT.
MECH. RX-XX,XX	INDICATES HP CIRCUIT.
HOSP RX-XX	INDICATES GUEST ROOM HOSPITALITY UNIT CIRCUIT (ROOMS 201, 601, 701 ONLY)

NOTE: REFER TO LARGE SCALE GUEST ROOM PLANS ON SHEETS E3.0-E3.10 FOR GUEST ROOM CIRCUITING.



Prepared For: Consultant: Architect: Project: Revisions: Date: Scale: Date:	<p style="text-align: center;">119 Development, LLC P.O. Box 7468 Portland, ME 04112</p> <p style="text-align: center;">CHS ENGINEERING CONSTANCE HIGKEY SCOTT, PE 7846 WOOD OAK COVE CORDOVA, TN 38016 TEL: (901) 830-5300 EMAIL: chscott@chsengineering.com</p> <p style="text-align: center;">ARCHETYPE architects 48 Union Wharf Portland, Maine 04101 (207) 772-6022 Fax (207) 772-4056</p> <p style="text-align: center;">Press Hotel 119 Exchange St. Portland, ME 04101</p> <p style="text-align: center;">ISSUED FOR BID 10/14/13</p> <p style="text-align: center;">SEVENTH FLOOR ELECTRICAL PLAN</p> <p style="font-size: 2em; text-align: center;">E2.07</p>
--	---