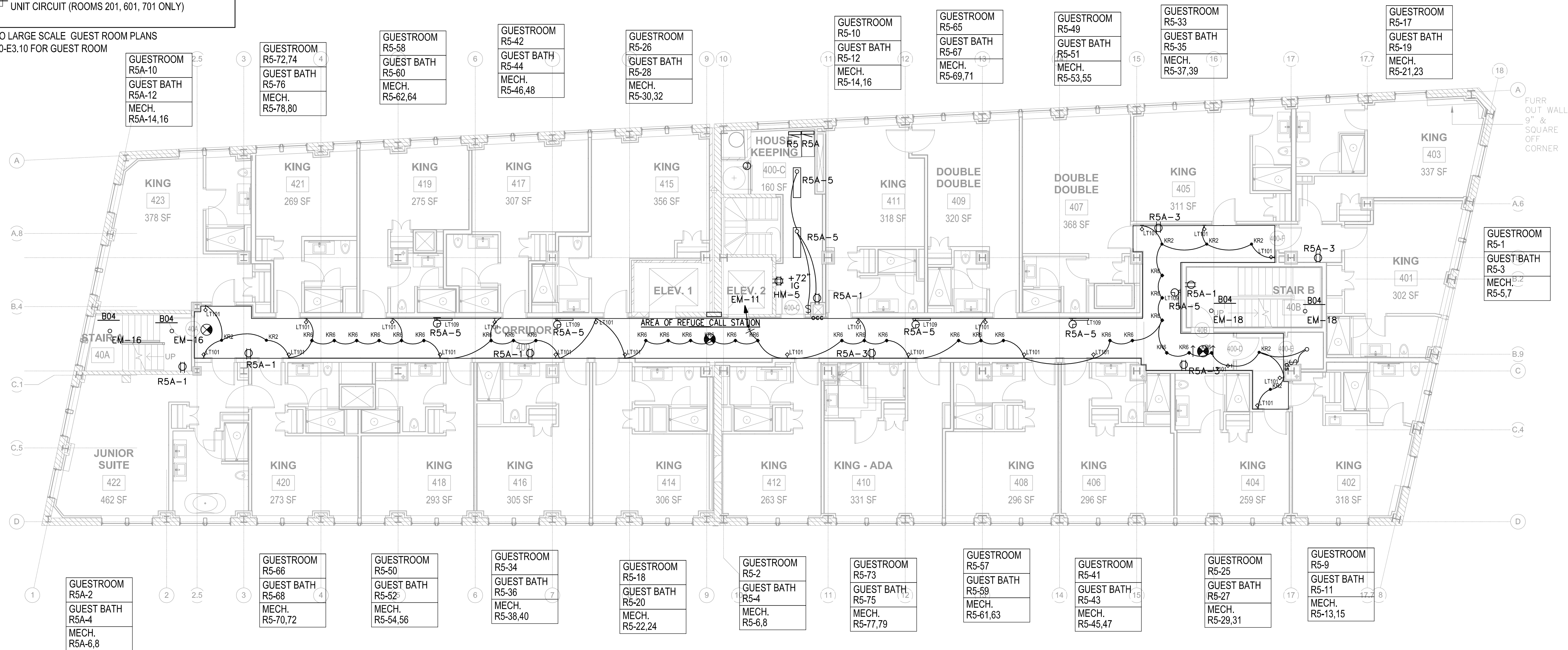


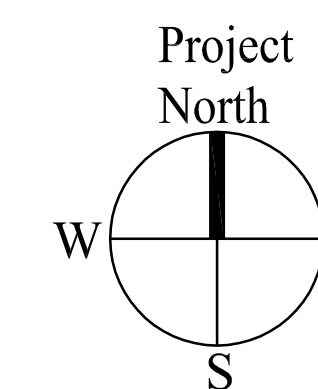
CIRCUIT LEGEND:

GUESTROOM RX-XX	INDICATES GUEST ROOM CIRCUIT.
GUEST BATH RX-XX	INDICATES GUEST BATHROOM CIRCUIT.
MECH. RX-XX,XX	INDICATES HP CIRCUIT.
HOSP RX-XX	INDICATES GUEST ROOM HOSPITALITY UNIT CIRCUIT (ROOMS 201, 601, 701 ONLY)

NOTE: REFER TO LARGE SCALE GUEST ROOM PLANS ON SHEETS E3.0-E3.10 FOR GUEST ROOM CIRCUITING.



1 | FIFTH FLOOR PLAN
SCALE: 1/8"=1'-0"



Prepared For:
119 Development, LLC
P.O. Box 7468
Portland, ME 04112

Consultant:
CIS ENGINEERING
CONSTANCE HIGKEY SCOTT, PE
7846 WOOD OAK COVE
CORDOVA, TN 38016
TEL: (901) 830-5300
EMAIL: chscott@cisengineering.com

Architect:
ARCHETYPE architects
48 Union Wharf Portland, Maine 04101
(207) 772-6022 Fax (207) 772-4056

Project:
Press Hotel
119 Exchange St.
Portland, ME 04101

Revisions:
ISSUED FOR BID 10/14/13

Scale:
FIFTH FLOOR ELECTRICAL PLAN

Date:
E2.05