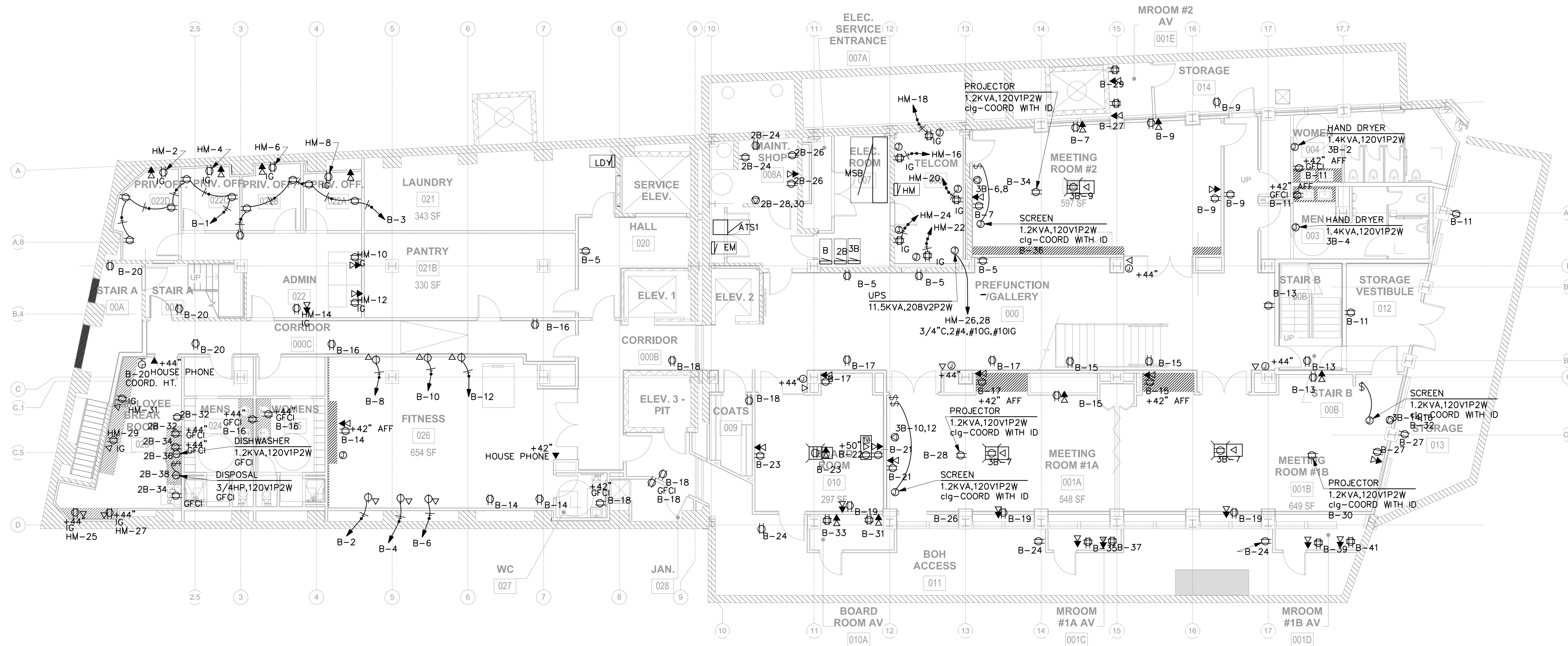


LAUNDRY EQUIPMENT SCHEDULE

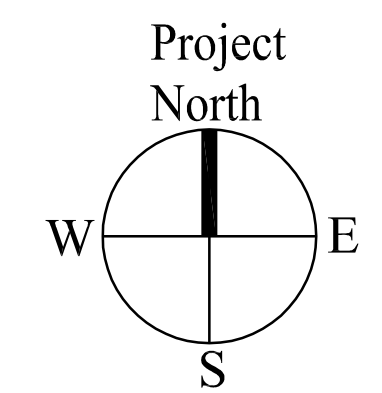
CALLOUT	SYMBOL	VOLTS	KVA	CIRCUIT	WIRE CALLOUT
CHEM DISPENSER	⊖	120V 1P 2W	1.2	LDY-20	1/2"C,1#12, #12N, #12G
CHEM DISPENSER	⊖	120V 1P 2W	1.2	LDY-22	1/2"C,1#12, #12N, #12G
DRYER	☐	208V 3P 3W	2.77	LDY-2,4,6	1/2"C,3#12, #12G
DRYER	☐	208V 3P 3W	2.77	LDY-8,10,12	1/2"C,3#12, #12G
DRYER	☐	208V 3P 3W	2.77	LDY-14,16,18	1/2"C,3#12, #12G
LINT COLLECTOR	☐	208V 3P 3W	3.99	LDY-13,15,17	1/2"C,3#12, #12G
WASHER	☐	208V 3P 3W	9.15	LDY-1,3,5	3/4"C,3#8, #10G
WASHER	☐	208V 3P 3W	9.15	LDY-7,9,11	3/4"C,3#8, #10G

EQUIPMENT APPROXIMATED CONFIRM WITH LAUNDRY EQUIP SUPPLIER

REFER TO SHEET E4.01 FOR MECHANICAL EQUIPMENT SCHEDULES AND MECHANICAL DRAWINGS FOR LOCATIONS OF ALL EQUIPMENT
REFER TO SHEET E1.01 FOR ADDITIONAL EQUIPMENT SCHEDULES



1 LOWER LEVEL POWER PLAN
SCALE: 1/8"=1'-0"



Prepared For:
119 Development, LLC
P.O. Box 7468
Portland, ME 04112

Consultant:
CHS ENGINEERING
CONSTANCE HICKEY SCOTT, PE
7846 WOOD OAK COVE
CORDOVA, TN 38016
TEL: (901) 830-5300
EMAIL: chscott@chsengineering.com

Architect:
ARCHETYPE architects
48 Union Wharf Portland, Maine 04101
(207) 772-6022 Fax (207) 772-4056

Project:
Press Hotel
119 Exchange St.
Portland, ME 04101

Revisions:
ISSUED FOR BID 10/14/13

Scale:
LOWER LEVEL POWER PLAN

Date:
E1.02