

PLUMBING EQUIPMENT SCHEDULE

CALLOUT	SYMBOL	VOLTS	CALCULATED AMPS	KVA	HP	CIRCUIT	WIRE CALLOUT
BOILER CONTROLS	⊕	120V 1P 2W	5	0.6		SB-2	1/2"C,1#12,#12N,#12G
BOILER CONTROLS	⊕	120V 1P 2W	5	0.6		SB-4	1/2"C,1#12,#12N,#12G
KITCHEN WATER HEATER CONTROLS	⊕	120V 1P 2W	12	1.44		SB-8	1/2"C,1#12,#12N,#12G
KITCHEN WATER HEATER CONTROLS	⊕	120V 1P 2W	12	1.44		SB-10	1/2"C,1#12,#12N,#12G
RECIRC PUMP	⊕	120V 1P 2W	5.5	0.53	1/6 HP	SB-6	1/2"C,1#12,#12N,#12G
RECIRC PUMP	⊕	120V 1P 2W	1.04	0.1	F HP	SB-12	1/2"C,1#12,#12N,#12G
SUB PUMP CONTROLS	⊕	120V 1P 2W	5	0.6		SB-26	1/2"C,1#12,#12N,#12G
SUB PUMP CONTROLS	⊕	120V 1P 2W	5	0.6		SB-26	1/2"C,1#12,#12N,#12G
SUB PUMP CONTROLS	⊕	120V 1P 2W	5	0.6		SB-40	1/2"C,1#12,#12N,#12G
SUB PUMP CONTROLS	⊕	120V 1P 2W	5	0.6		SB-40	1/2"C,1#12,#12N,#12G
SUBMERSIBLE PUMP	⊕	208V 3P 3W	6.06	1.75	1 HP	SB-14,16,18	1/2"C,3#12,#12G
SUBMERSIBLE PUMP	⊕	208V 3P 3W	6.06	1.75	1 HP	SB-20,22,24	1/2"C,3#12,#12G
SUBMERSIBLE PUMP	⊕	208V 3P 3W	6.06	1.75	1 HP	SB-28,30,32	1/2"C,3#12,#12G
SUBMERSIBLE PUMP	⊕	208V 3P 3W	6.06	1.75	1 HP	SB-34,36,38	1/2"C,3#12,#12G

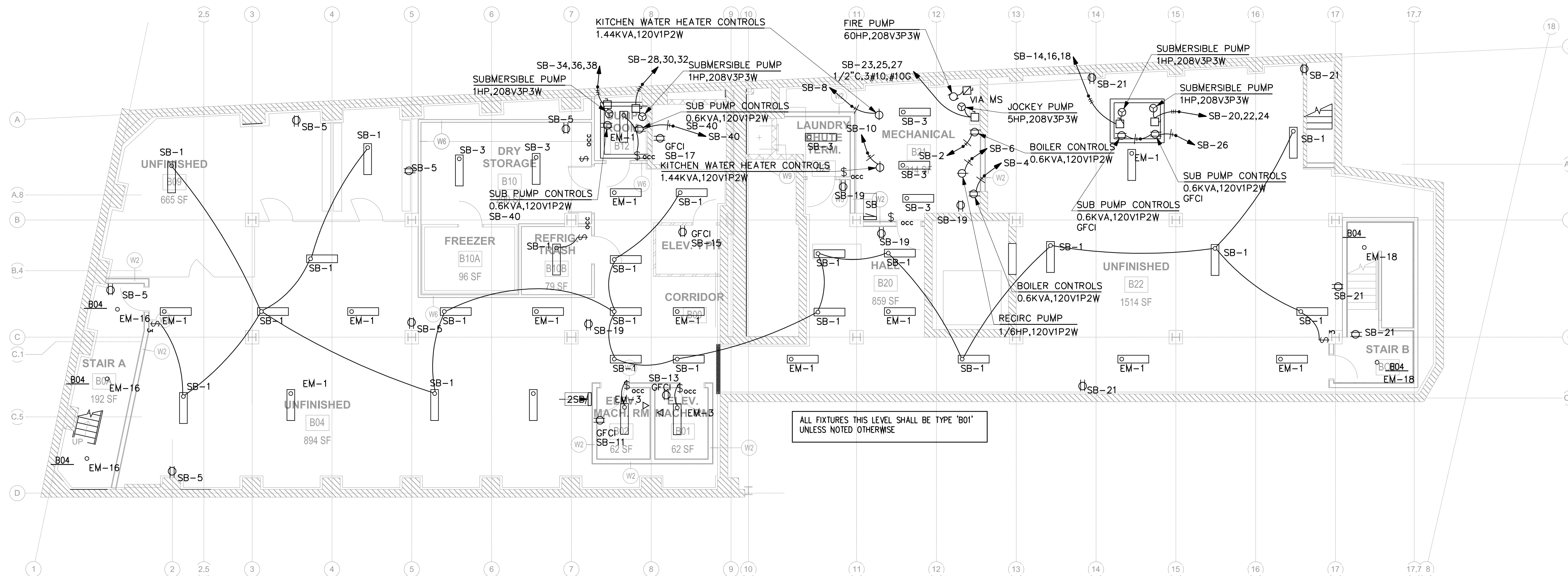
ELEVATOR EQUIPMENT SCHEDULE

CALLOUT	SYMBOL	VOLTS	KVA	CIRCUIT	WIRE CALLOUT
ELEV #1 LTS	⊕	120V 1P 2W	0.3	MR-7	1/2"C,1#12,#12N,#12G
ELEV #2 LTS	⊕	120V 1P 2W	0.3	MR-9	1/2"C,1#12,#12N,#12G
ELEV #3 LTS	⊕	120V 1P 2W	0.3	SB-29	1/2"C,1#12,#12N,#12G
ELEV #4 LTS	⊕	120V 1P 2W	0.3	SB-31	1/2"C,1#12,#12N,#12G
ELEVATOR #1	⊕	208V 3P 3W	9.37	ATS2-1	3/4"C,3#8,#10G
ELEVATOR 1 HVAC	⊕	120V 1P 2W	1.2	MR-11	1-1/2"C,1#4/0,#4/ON,#4G
ELEVATOR #2	⊕	208V 3P 3W	9.37	MR-1,3,5	3/4"C,3#8,#10G
ELEVATOR 2 HVAC	⊕	120V 1P 2W	1.2	MR-13	1-1/2"C,1#4/0,#4/ON,#4G
ELEVATOR #3	⊕	208V 3P 3W	25.94	MSB-20	1-1/4"C,3#1,#6G
ELEVATOR 3 HVAC	⊕	120V 1P 2W	1.2	SB-33	1-1/2"C,1#4/0,#4/ON,#4G
ELEVATOR #4	⊕	208V 3P 3W	74.94	MSB-21	2"C,3#4/0,#4G
ELEVATOR 4 HVAC	⊕	120V 1P 2W	1.2	SB-35	1-1/2"C,1#4/0,#4/ON,#4G

FIRE PROTECTION EQUIPMENT SCHEDULE

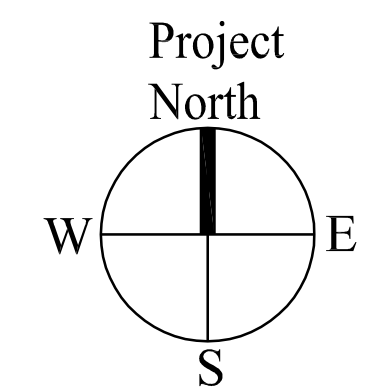
CALLOUT	VOLTS	HP	CIRCUIT	WIRE CALLOUT
FIRE PUMP	208V 3P 3W	60 HP		
JOCKEY PUMP	208V 3P 3W	5 HP	SB-23,25,27	1/2"C,3#10,#10G

FIRE PUMP TAPPED AHEAD OF MAIN REFER TO SHEET E6.02



1 SUB-BASEMENT ELECTRICAL PLAN
SCALE: 1/8"=1'-0"

REFER TO SHEET E4.01 FOR MECHANICAL EQUIPMENT SCHEDULES AND MECHANICAL DRAWINGS FOR LOCATIONS OF ALL EQUIPMENT



Prepared For:
119 Development, LLC
P.O. Box 7468
Portland, ME 04112

Consultant:
CIS ENGINEERING
CONSTANCE HIGKEY SCOTT, PE
7846 WOOD OAK COVE
CORDOVA, TN 38016
TEL: (901) 830-5300
EMAIL: cbscott@cisengineering.com

Architect:
ARCHETYPE architects
48 Union Wharf Portland, Maine 04101
(207) 772-6022 Fax (207) 772-4056

Project:
Press Hotel
119 Exchange St.
Portland, ME 04101

Revisions:
ISSUED FOR BID 10/14/13

Scale:
SUB-BASEMENT ELECTRICAL PLAN

Date:
E1.01