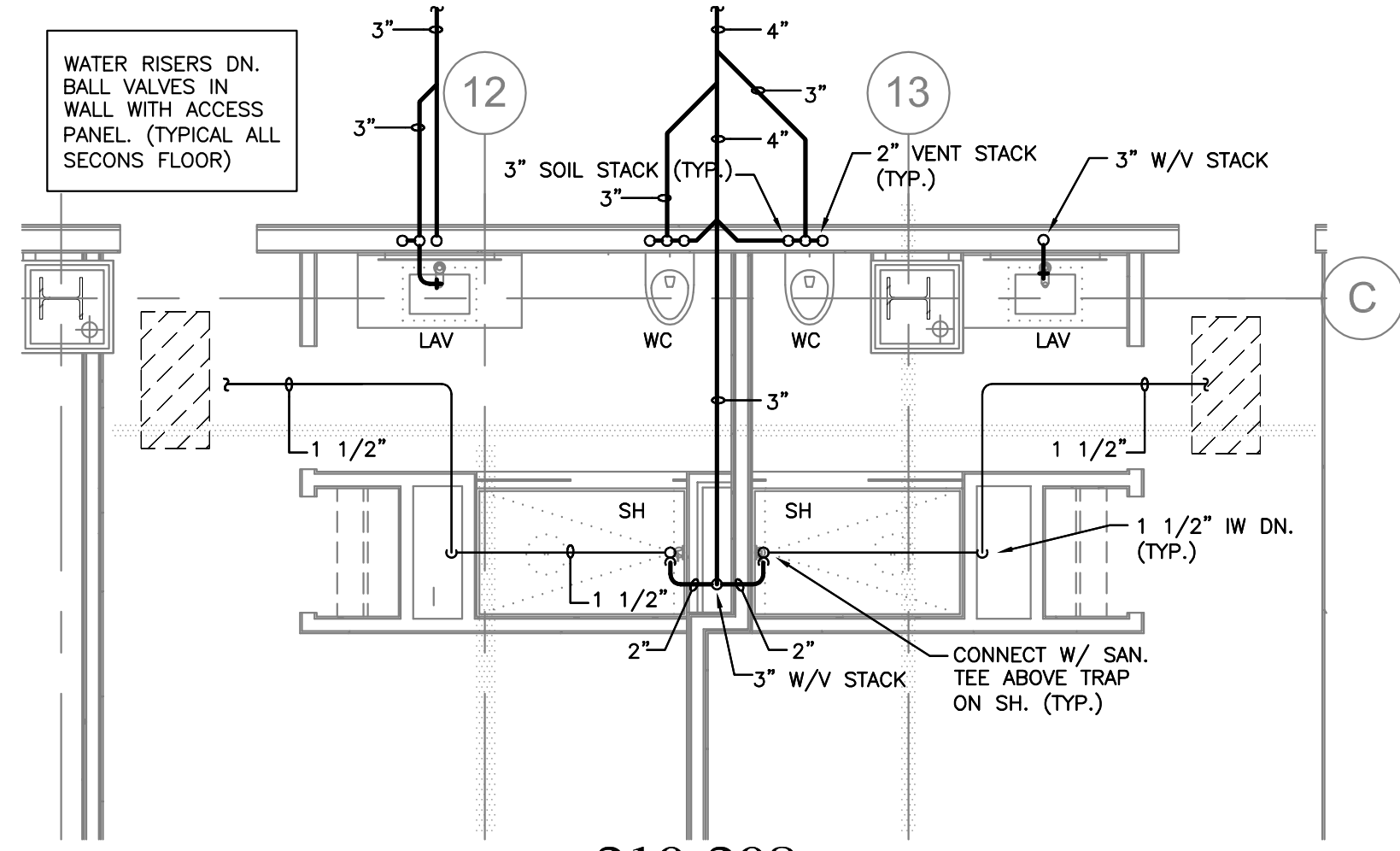
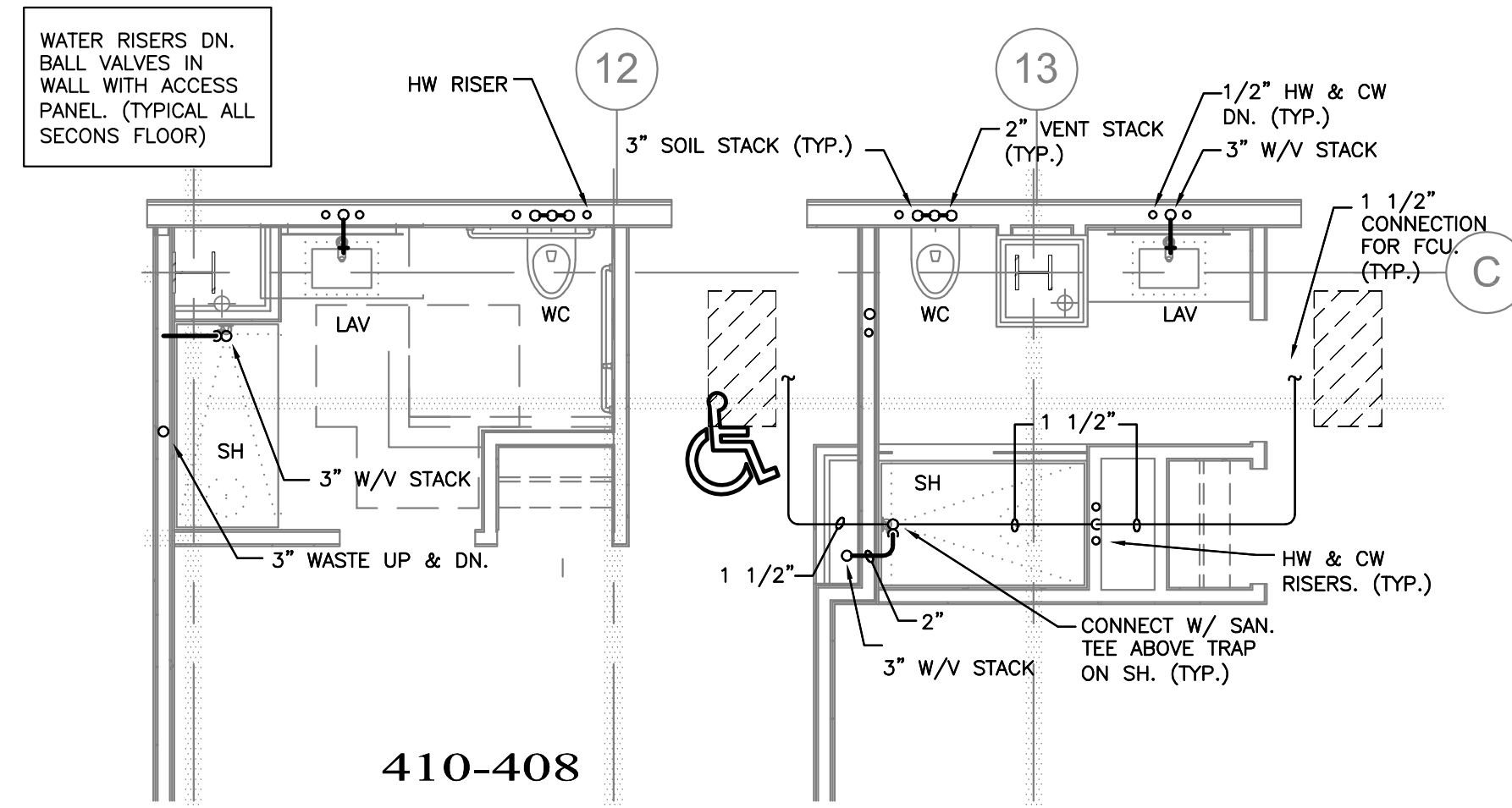


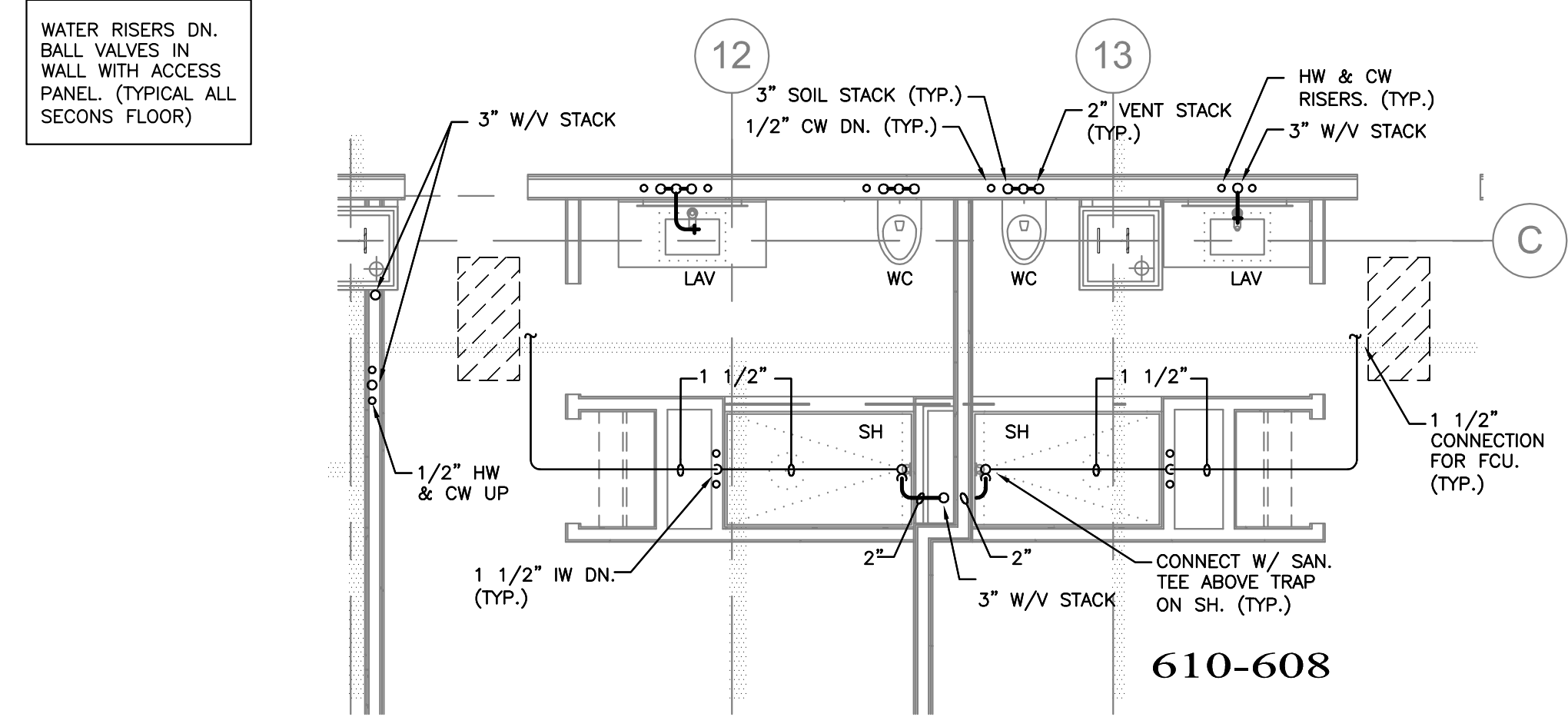
NOTE:
PROVIDE WCO AT BASE
OF ALL WASTE STACKS.



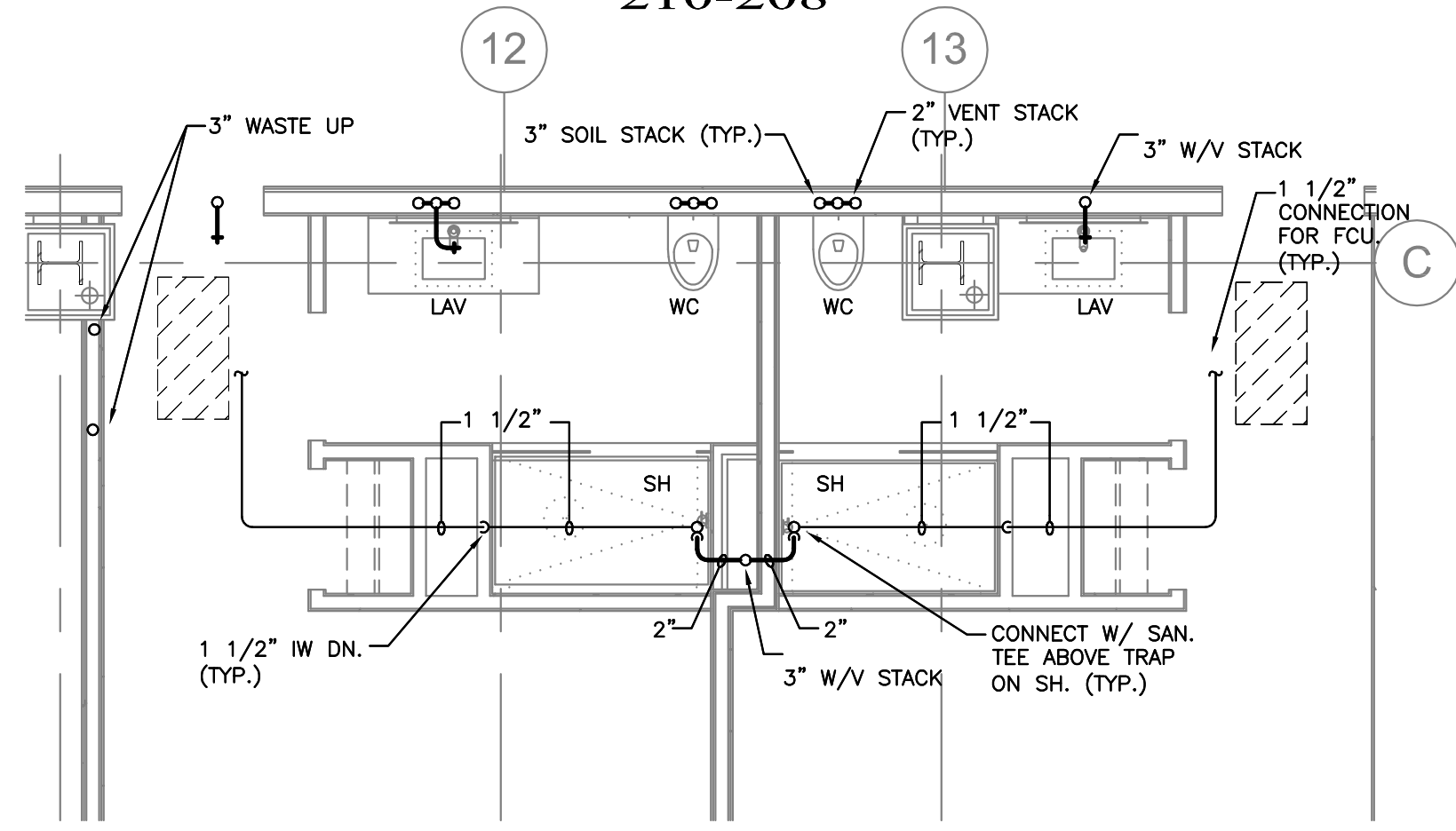
210-208



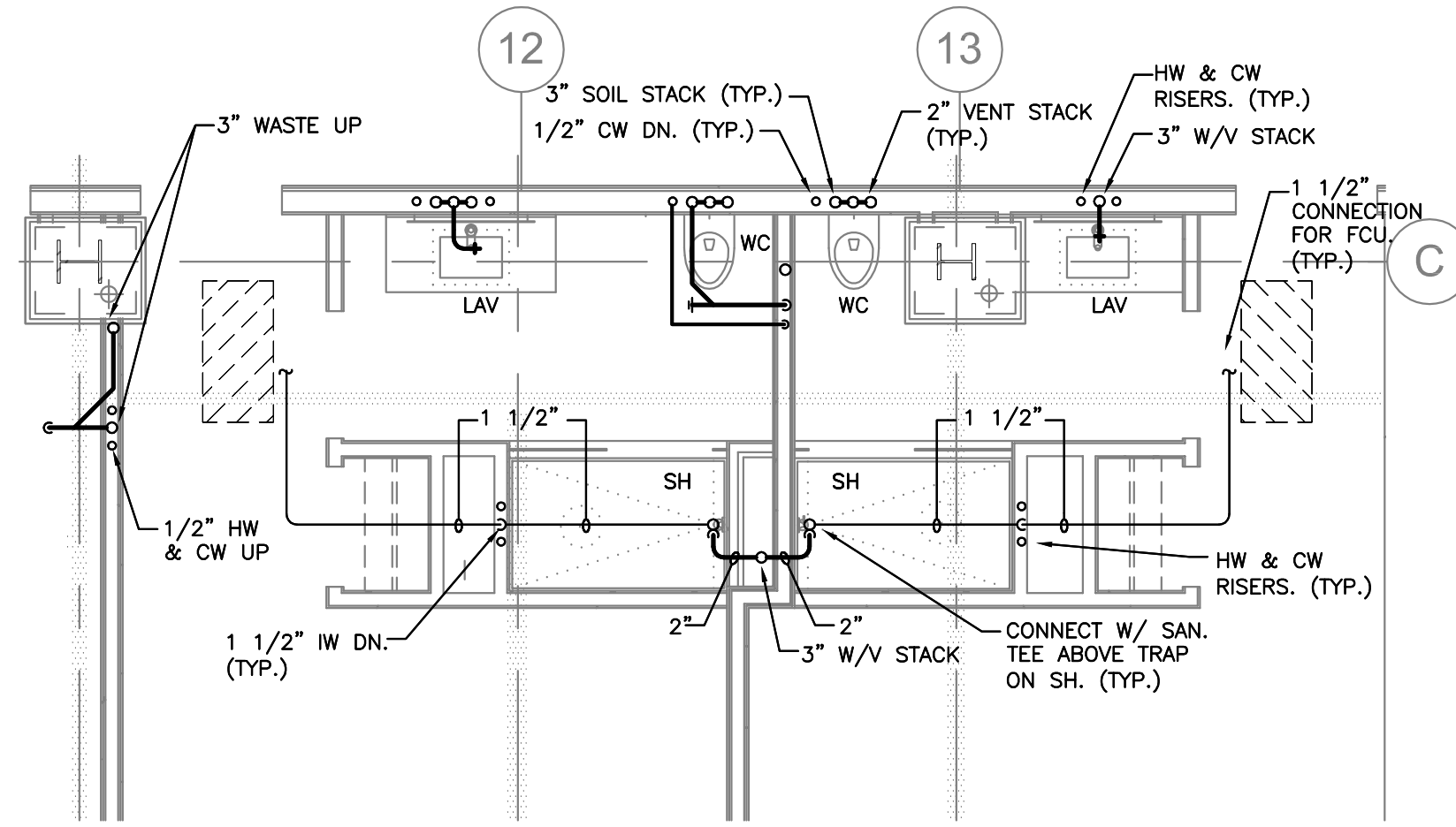
410-408



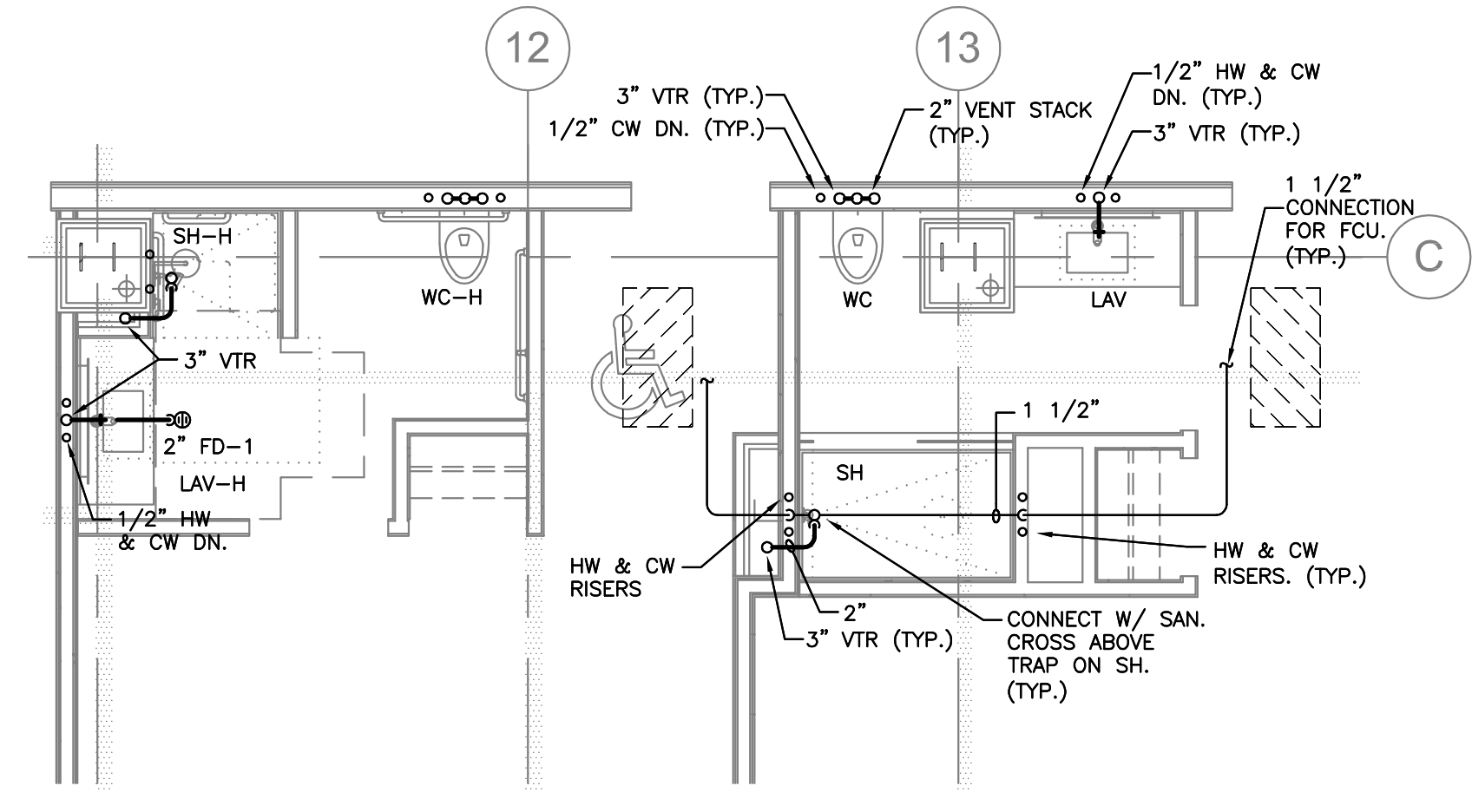
610-608



310-308



510-508

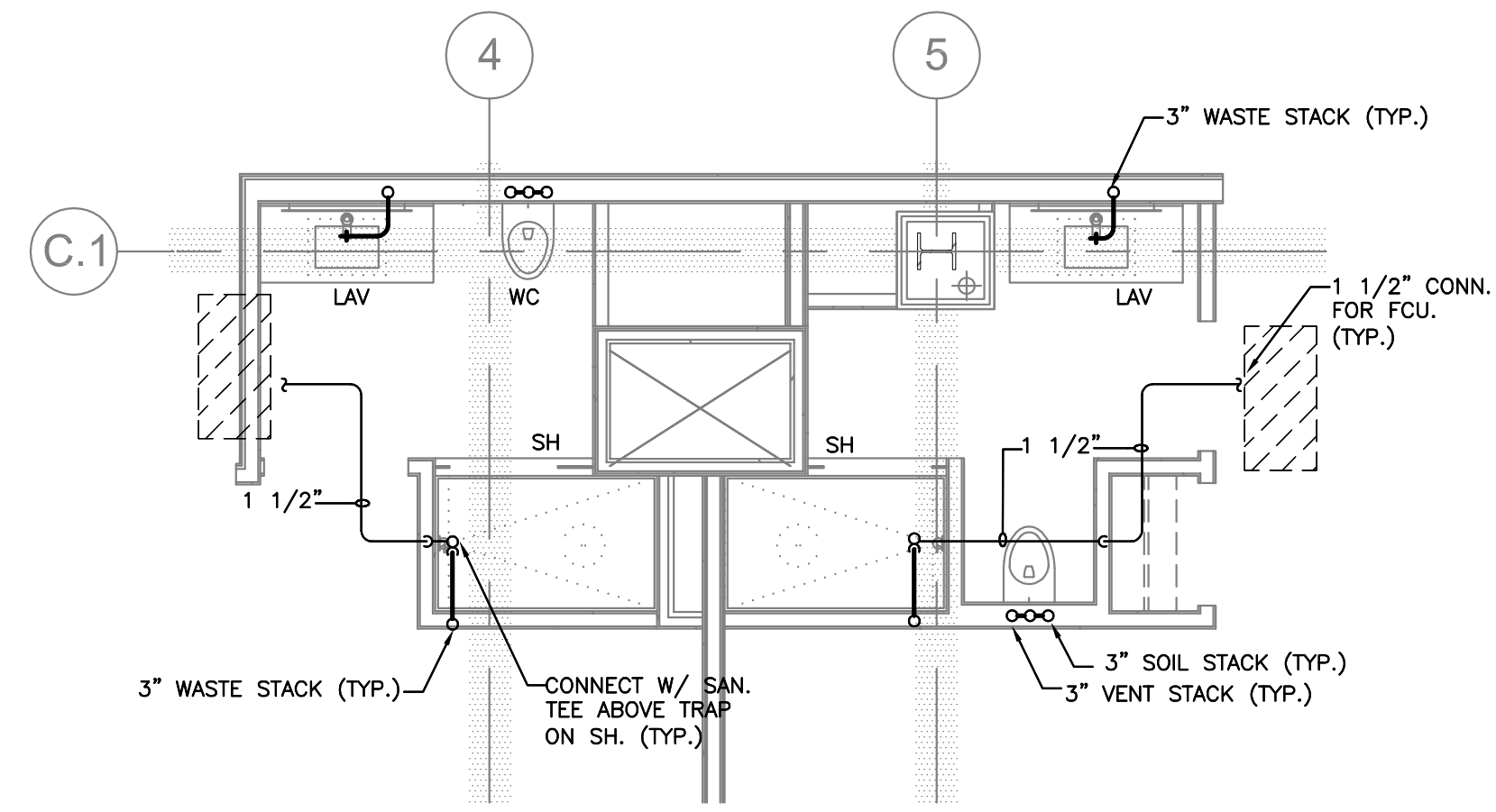


710-708

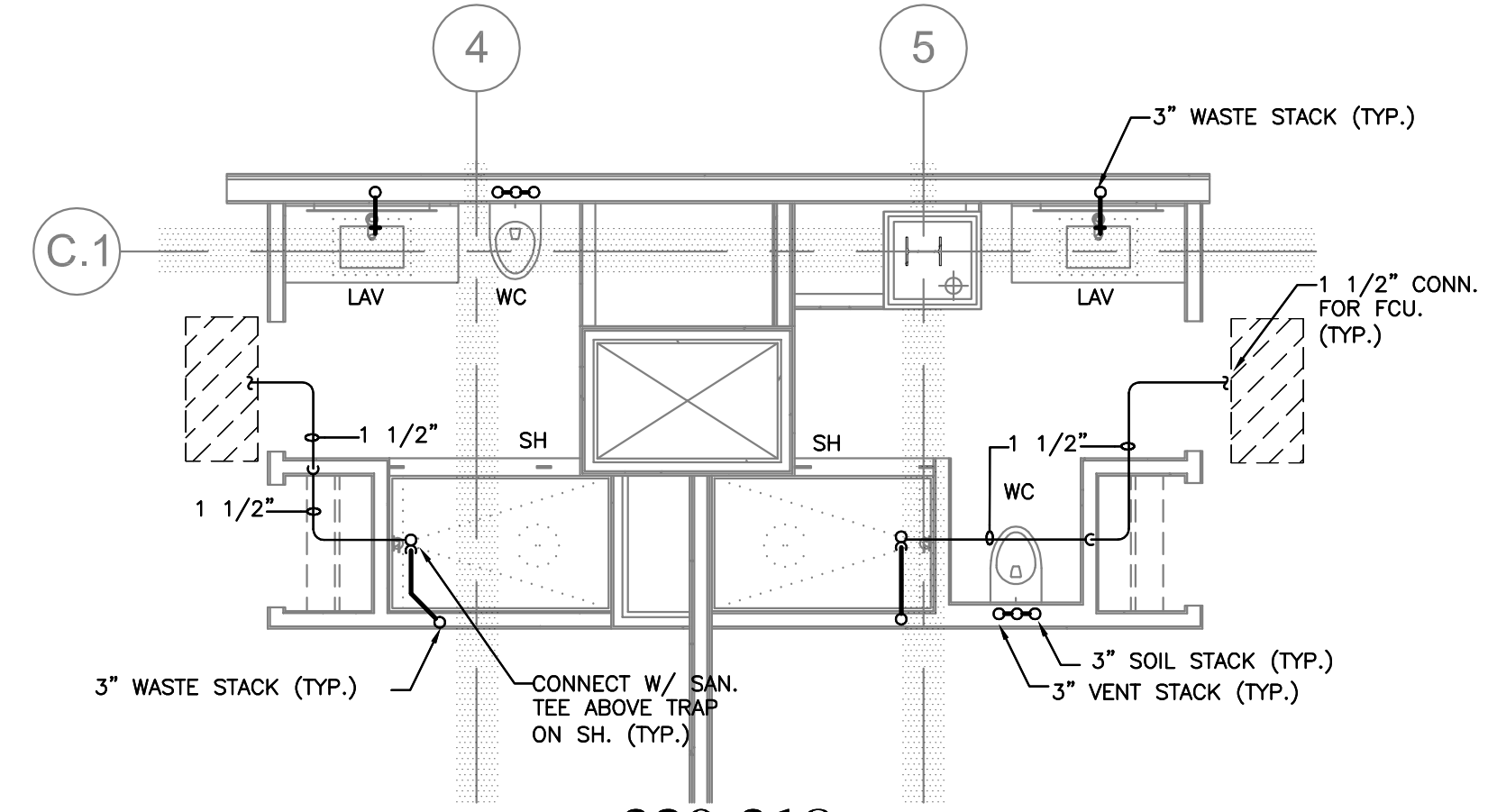
1 TYPICAL UNITS - PLUMBING

SCALE: 1/4"=1'-0"

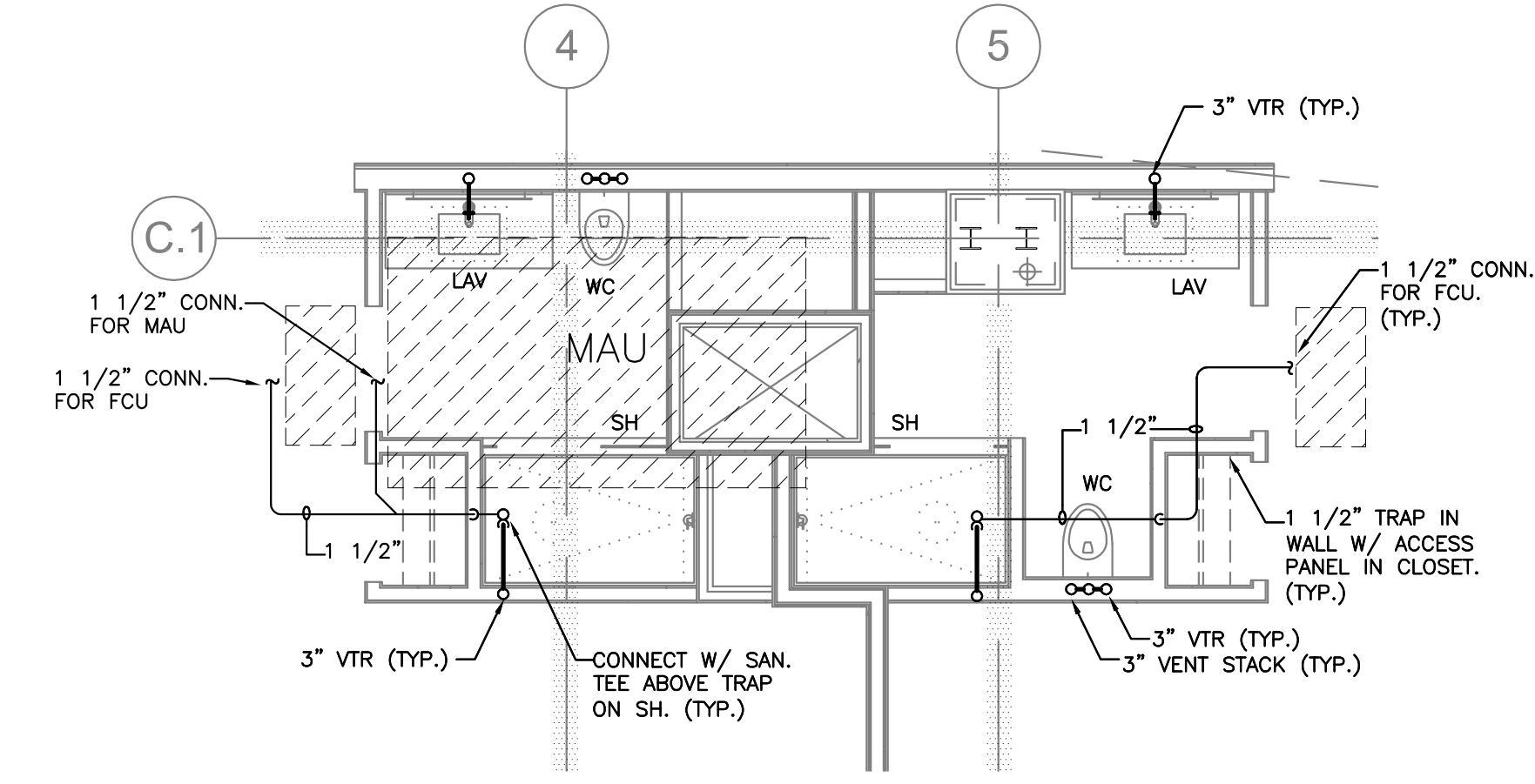
706-704



220-218



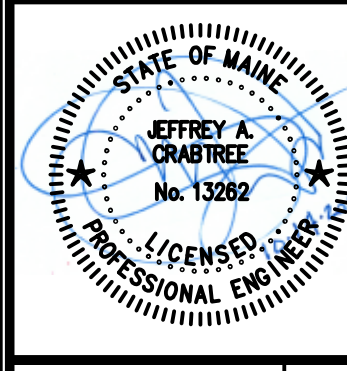
320-318
320-318



520-518

2 TYPICAL UNITS - PLUMBING

SCALE: 1/4"=1'-0"



Prepared For:
119 Development, LLC
P.O. Box 7468
Portland, ME 04112

Consultant:
CRABTREE ENGINEERING
978 AMELIA COVE
COLLIERVILLE, TN 38017
PLUMBING: bob@crabtree.com

Architect:
ARCHETYPE architects
48 Union Wharf Portland, Maine 04101
(207) 772-6022 Fax (207) 772-4056

Project:
PRESS HOTEL
390 CONGRESS STREET
PORTLAND, ME 04101

Revisions:

1	13_07-01	30% Marriott Submission
2	13_09-09	60% Marriott Sub. & Pric.
3	13_10-14	Issue for Bid & Marriott Revw.

Date: 13 October 2013
Scale: 1/4" = 1'-0"
TYPICAL GUESTROOMS PLUMBING

P7.05