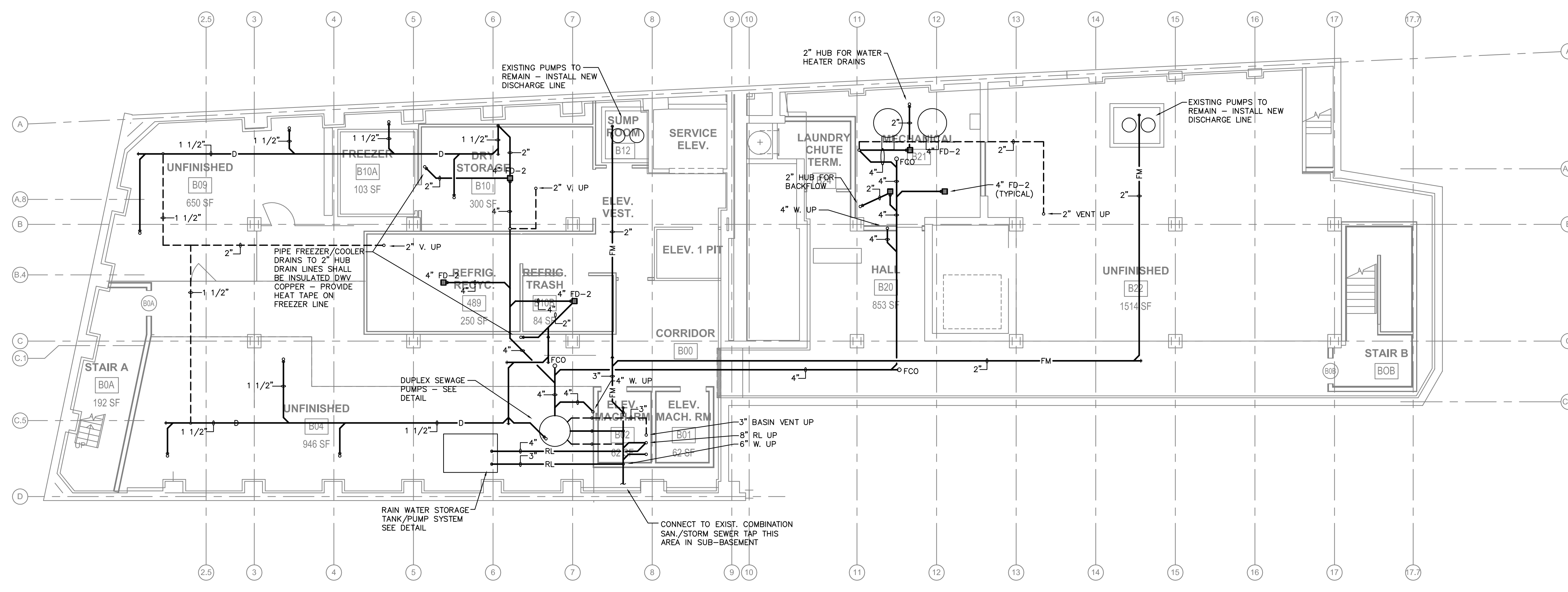
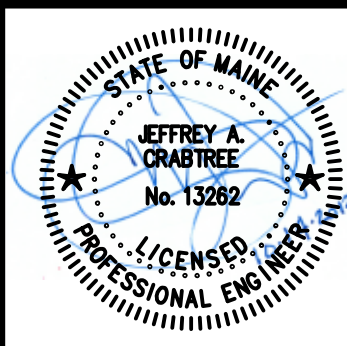


1 | SUB-BASEMENT PLAN - WATER
SCALE: 1/8"=1'-0"



2 | SUB-BASEMENT PLAN - WASTE, VENT AND RAIN LEADER
SCALE: 1/8"=1'-0"



Prepared For:
119 Development, LLC
P.O. Box 7468
Portland, ME 04112

Consultant:
CRABTREE ENGINEERING
278 AMELIA COVE
COLLIERVILLE, TN, 38017
PLUMBING: bob@crabtreeeng.com

Architect:
ARCHETYPE architects
48 Union Wharf Portland, Maine 04101
(207) 772-6022 Fax (207) 772-4056

Project:
PRESS HOTEL
390 CONGRESS STREET
PORTLAND, ME 04101

Revisions:

1	13_07-01	30% Marriott Submission
2	13_09-09	60% Marriott Sub. & Pric.
3	13_10-14	Issue for Bid & Marriott Rev

Date: 13 October 2013
Scale: 1/8"=1'-0"
SUB-BASEMENT PLANS - PLUMBING

P0.10