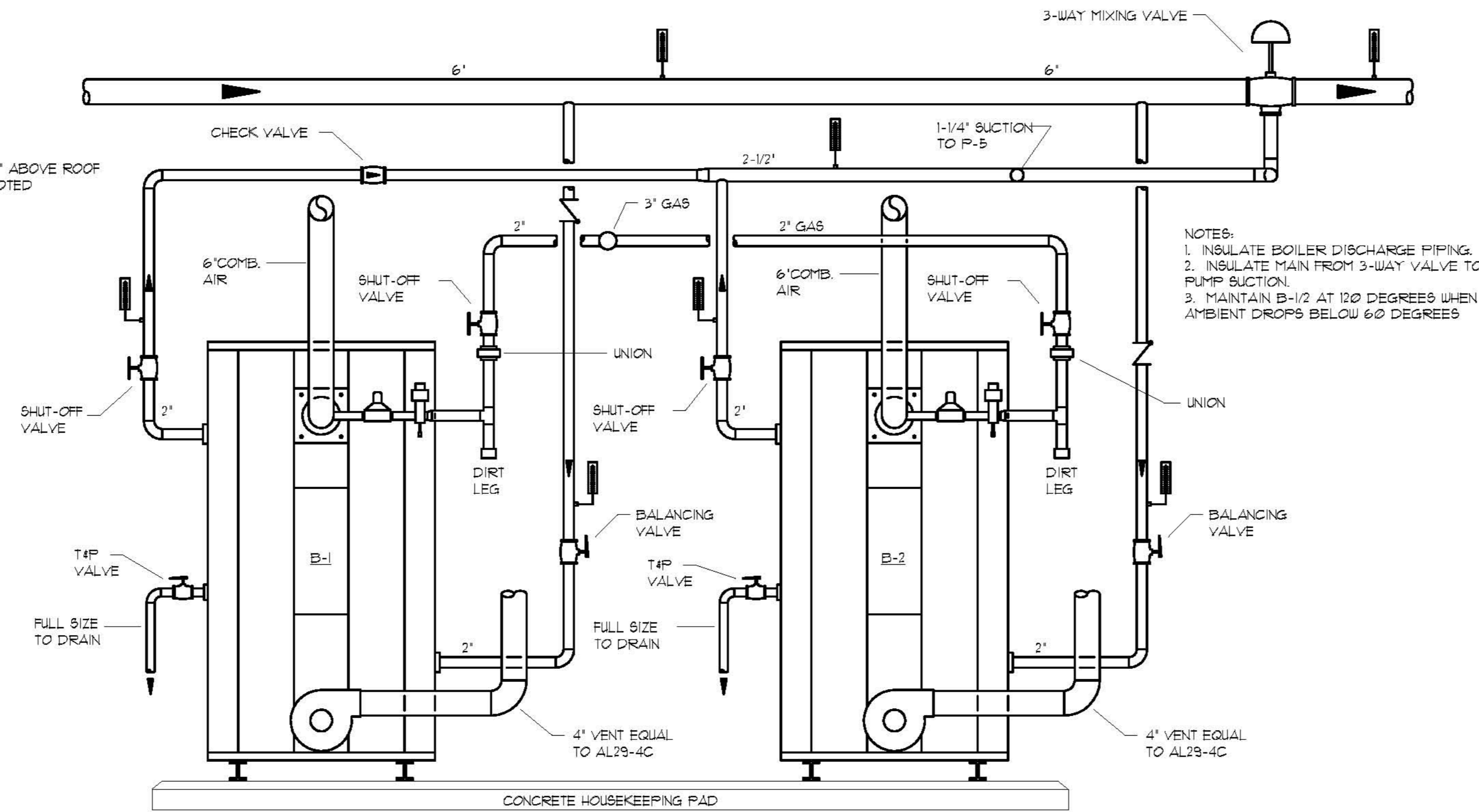


- NOTES:
1. MAXIMUM ALLOWABLE SPACING FOR FASTENERS INDICATED. ACTUAL INTERVALS ARE APPROXIMATE. COMPLY WITH THE MANUFACTURER'S INSTALLATION INSTRUCTIONS.
 2. LINER SHALL BE ADHERED TO THE DUCT WITH 100% COVERAGE OF ADHESIVE IN ADDITION TO THE MECHANICAL FASTENERS.

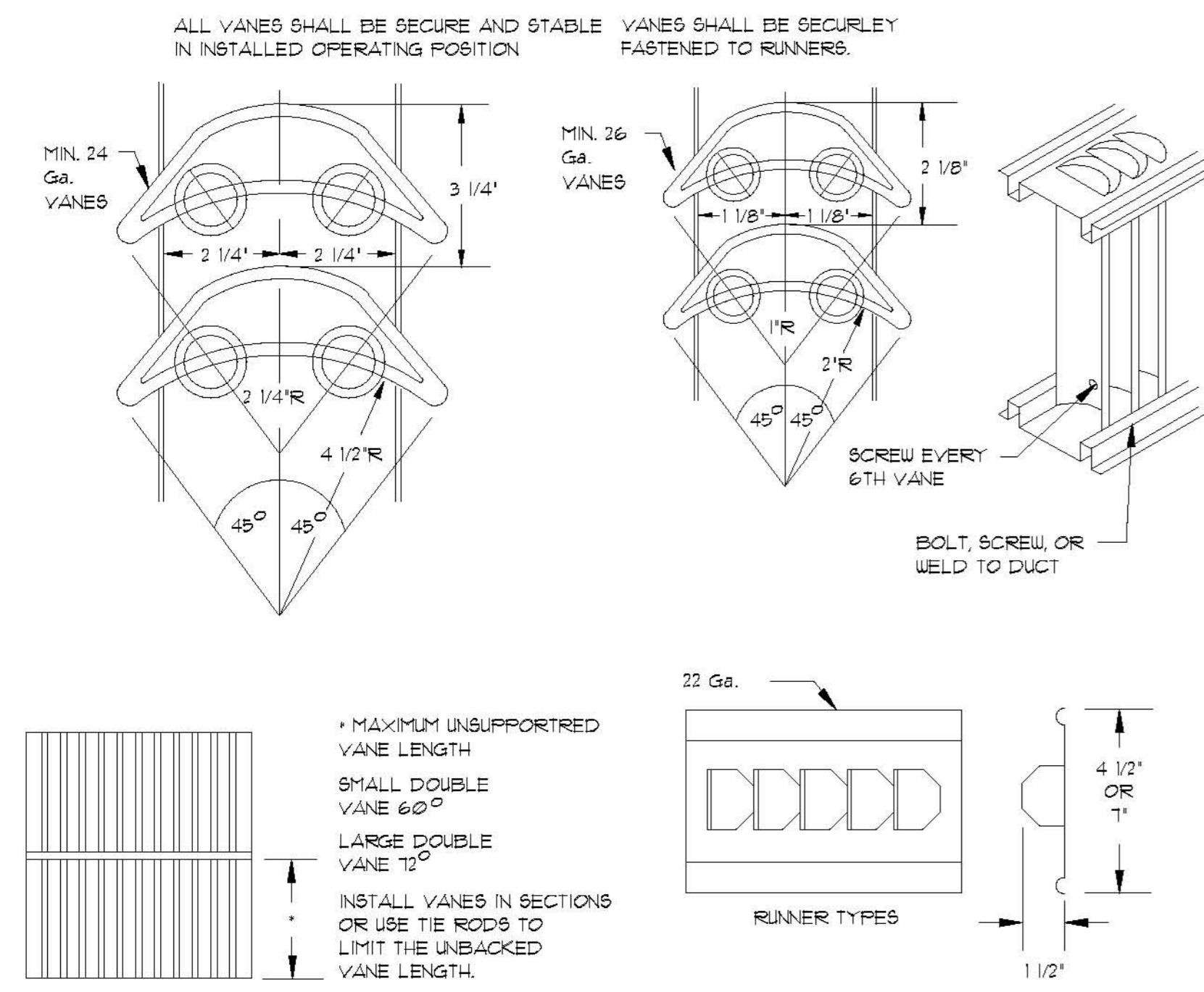
| VELOCITY | DIMENSIONS | | | |
|---------------|------------|-----|-----|-----|
| | 'A' | 'B' | 'C' | 'E' |
| 0-2500 FPM | 3' | 12' | 4' | 16' |
| 2501-6000 FPM | 3' | 6' | 4' | 16' |

INTERNAL DUCTLINER DETAIL
NO SCALE

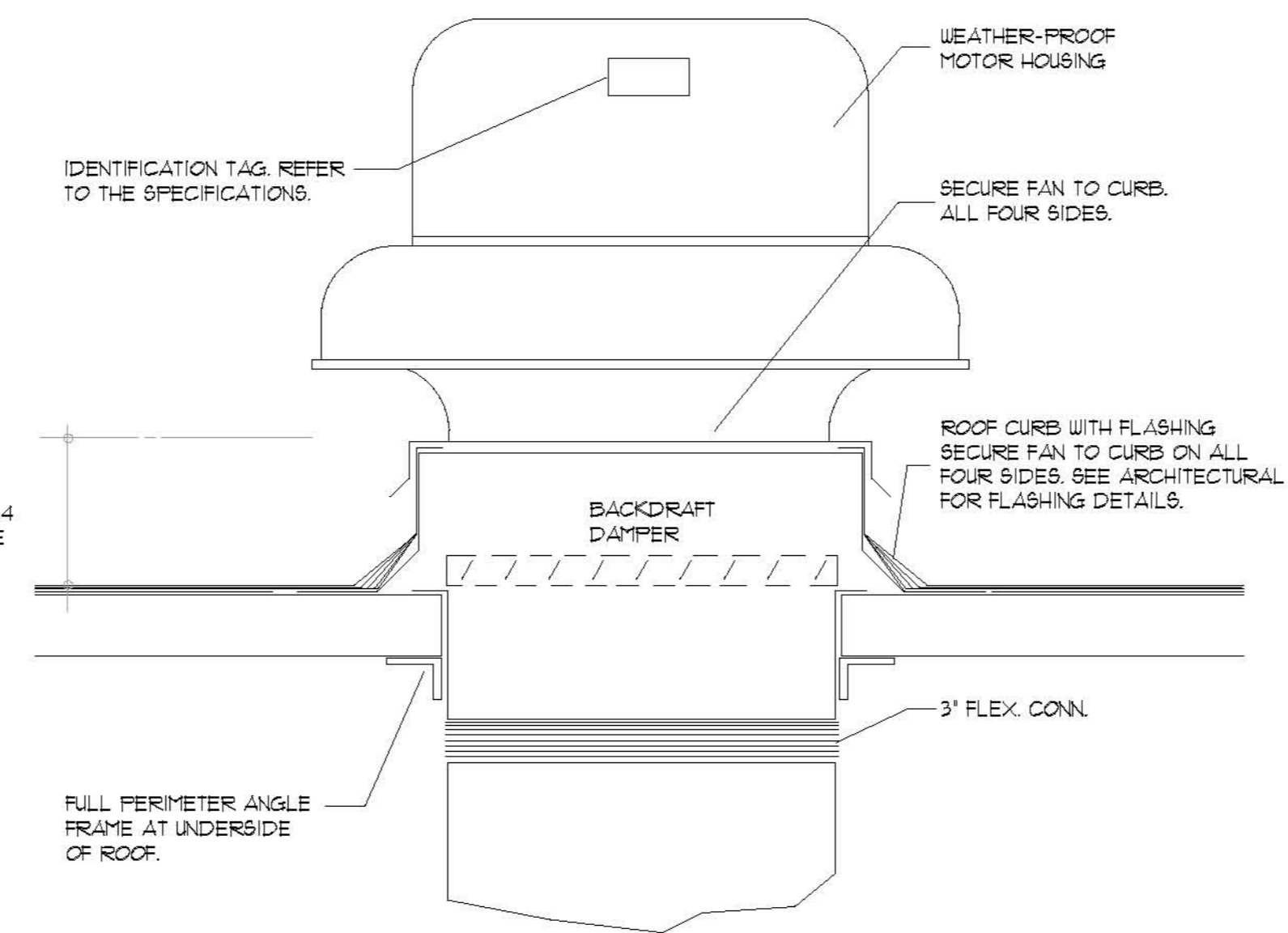


- NOTES:
1. INSULATE BOILER DISCHARGE PIPING.
 2. INSULATE MAIN FROM 3-WAY VALVE TO PUMP SUCTION.
 3. MAINTAIN B-1/2 AT 120 DEGREES WHEN AMBIENT DROPS BELOW 60 DEGREES

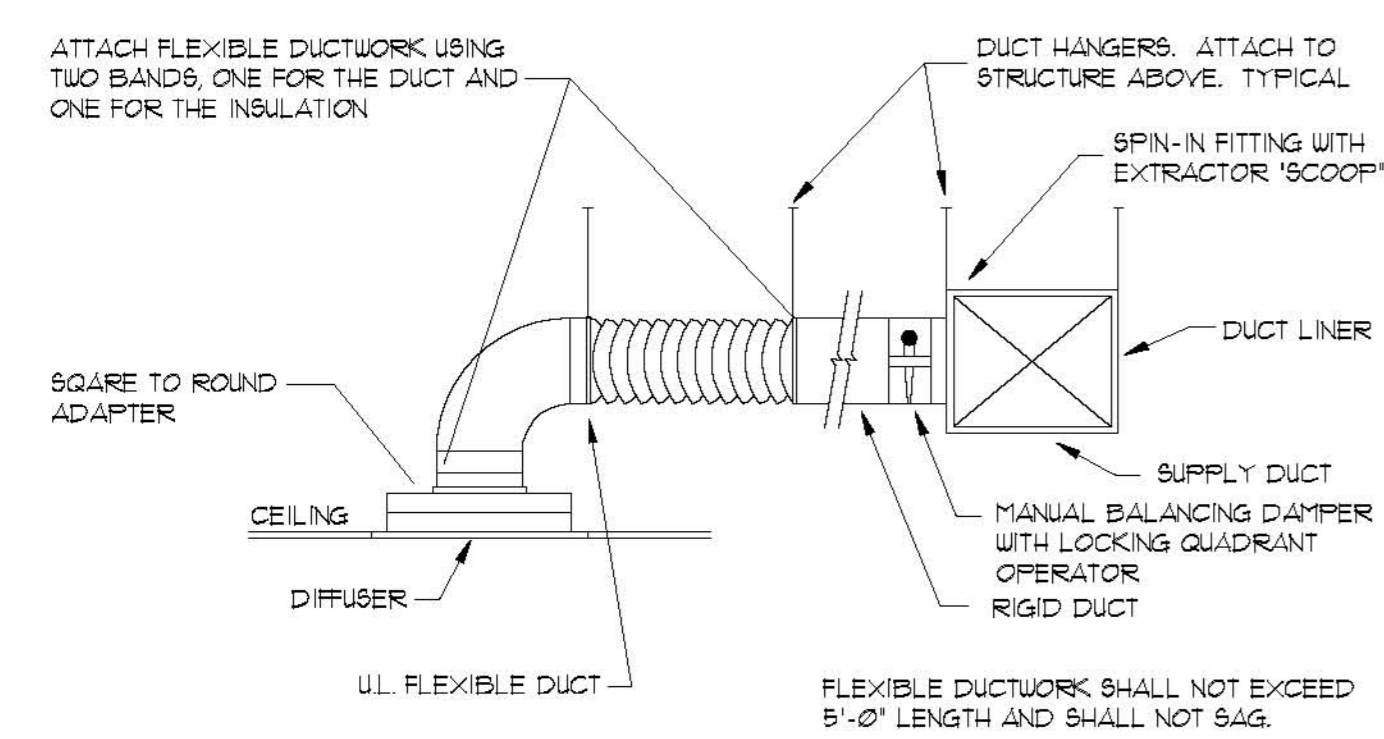
BOILER DETAIL
NO SCALE



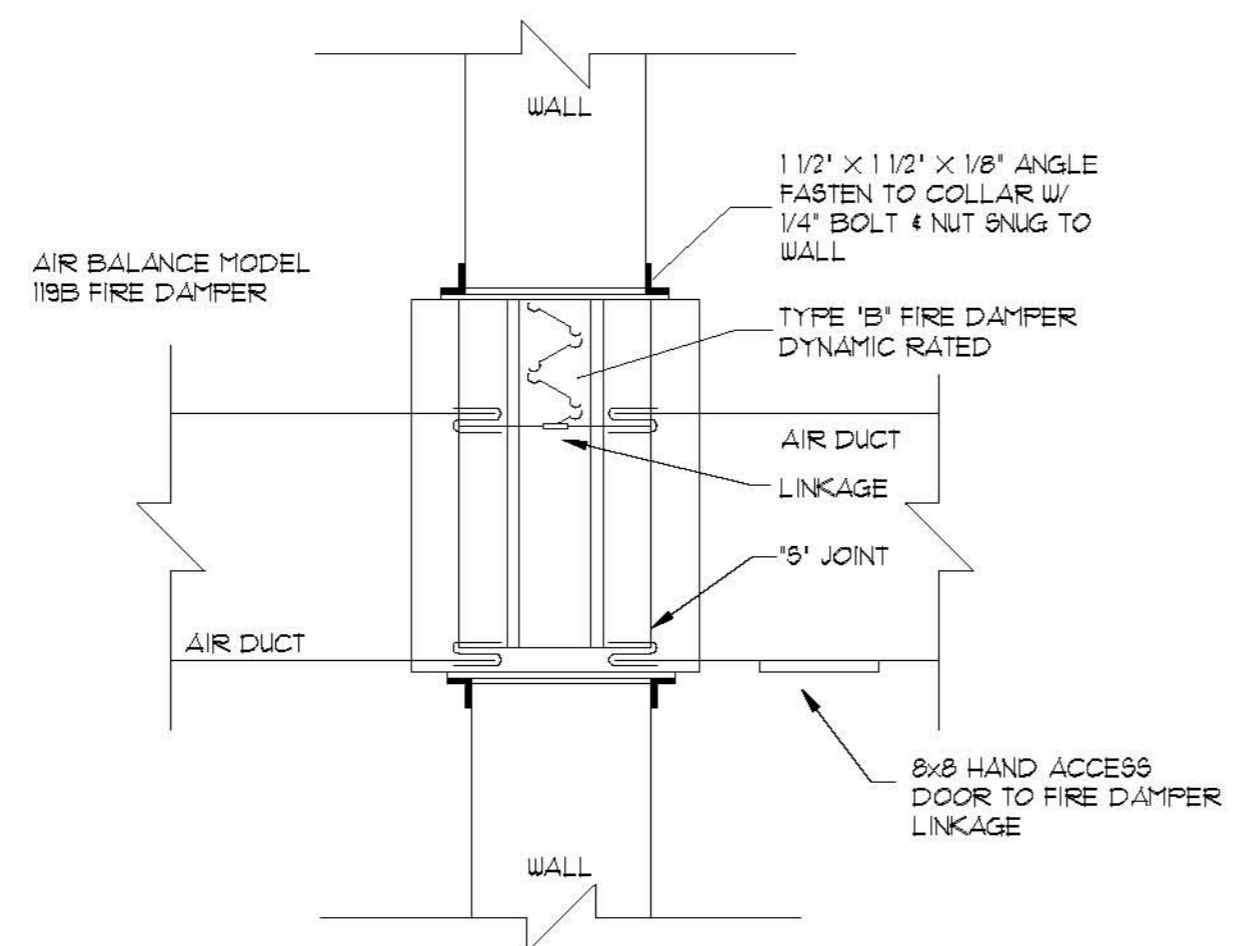
TURNING VANES
NO SCALE



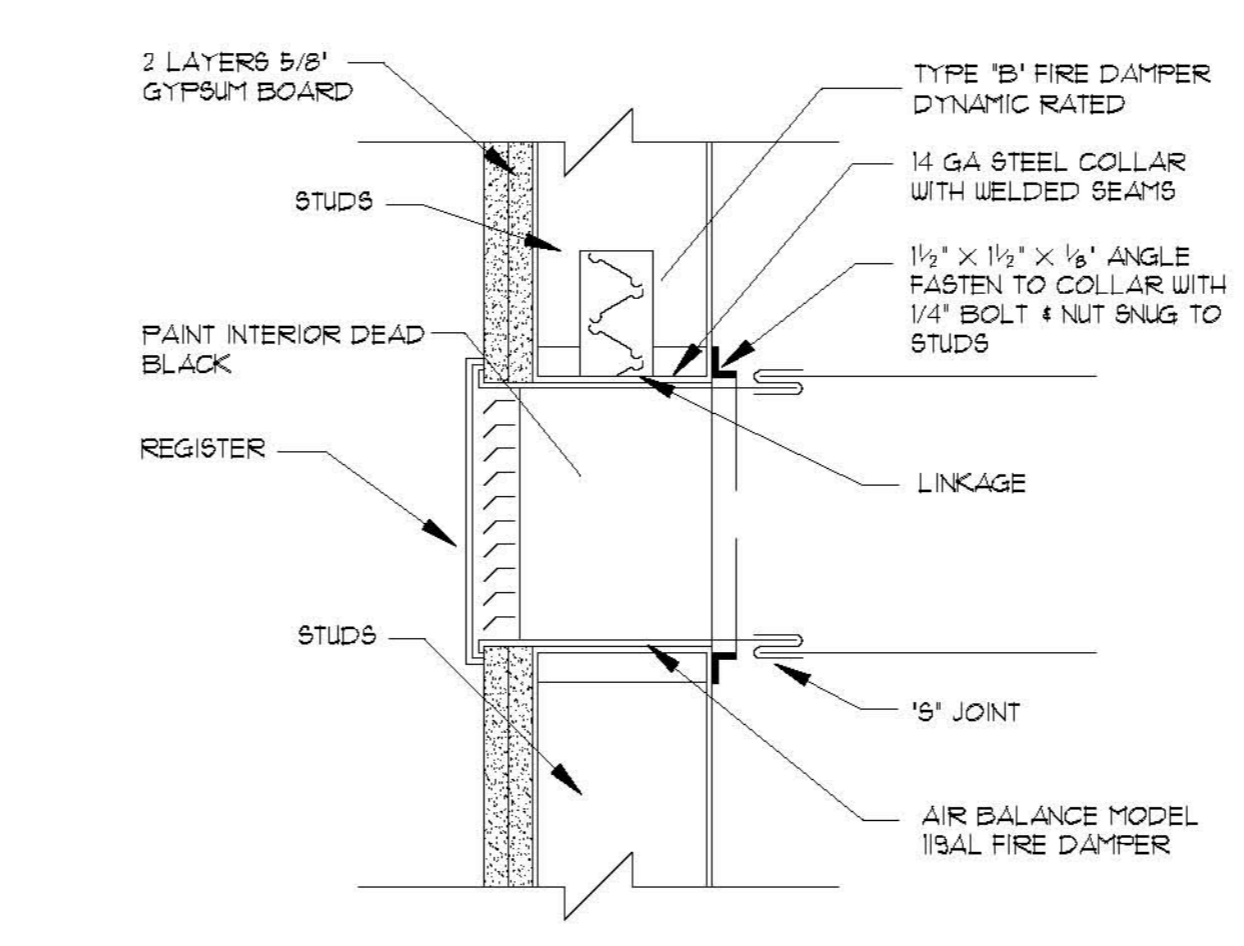
ROOF MOUNTED EXHAUST FAN DETAIL
NO SCALE



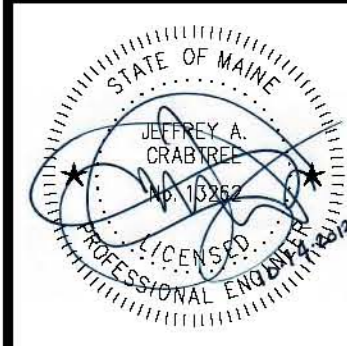
DUCT CONNECTION DETAIL
NO SCALE



FIRE DAMPER DETAIL
NO SCALE



FIRE DAMPER DETAIL
NO SCALE



Prepared For:
119 DEVELOPMENT LLC

Mechanical Engineer:
Crabtree Engineering
278 Amelia Cove
Collierville, Tennessee 38017
jce98@bellsouth.net

Architect:
ARCHETYPE architects
48 Union Wharf Portland, Maine 04101
(207) 772-6022 Fax (207) 772-4056

Project:
PRESS HOTEL
390 CONGRESS STREET
PORTLAND, MAINE

Revisions:

| | | |
|---|----------|-------------------------------|
| 1 | 13-07-01 | 30% Marriott Submission |
| 2 | 13-09-09 | 60% Marriott Sub. & Pric. |
| 3 | 13-10-14 | Issue for Bid & Marriott Revw |

Date: **08 OCT 13**
Scale: **1/8" = 1'-0"**
HVAC DETAILS

M9.01