

Prepared For:
119 DEVELOPMENT LLC

Mechanical Engineer:
Crabtree Engineering
 278 Amalia Cove
 Collierville, Tennessee 38017
 jce98@bellsouth.net

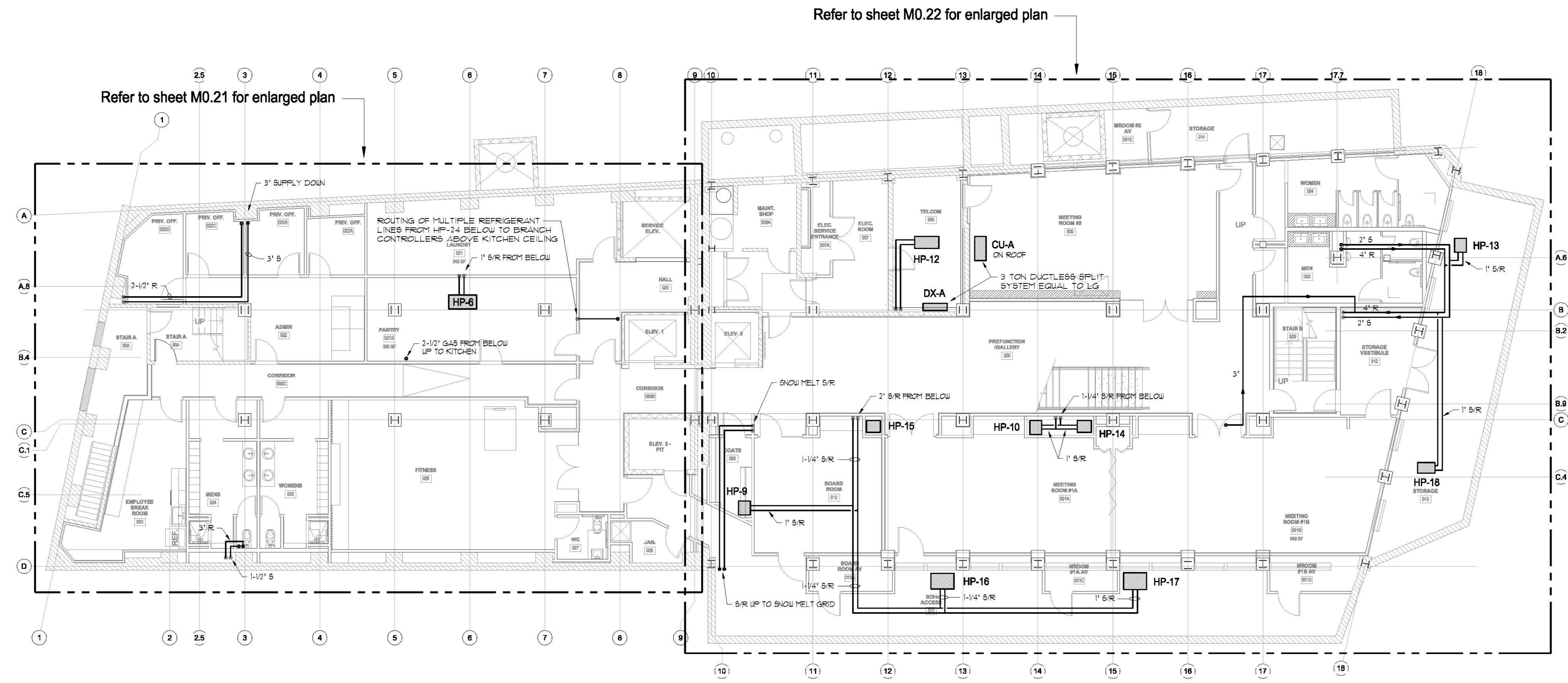
Architect:
ARCHETYPE architects
 48 Union Wharf Portland, Maine 04101
 (207) 772-6022 Fax (207) 772-4056

Project:
PRESS HOTEL
 390 CONGRESS STREET
 PORTLAND, MAINE

Revisions:	Date:	Description:
1	13-07-01	30% Marriott Submission
2	13-09-09	60% Marriott Sub. & Pric.
3	13-10-14	Issue for Bid & Marriott Revw

Date: 08 OCT 13
 Scale: 1/8" = 1'-0"
**LOWER LEVEL
 PLAN - HVAC**

M0.20



Refer to sheet M0.22 for enlarged plan

Refer to sheet M0.21 for enlarged plan

LOWER LEVEL PLAN - HVAC
 SCALE: 1/8"=1'-0"

