

Prepared For:  
119 DEVELOPMENT LLC

Mechanical Engineer:  
Crabtree Engineering  
278 Amalia Cove  
Collierville, Tennessee 38017  
jce98@bellsouth.net

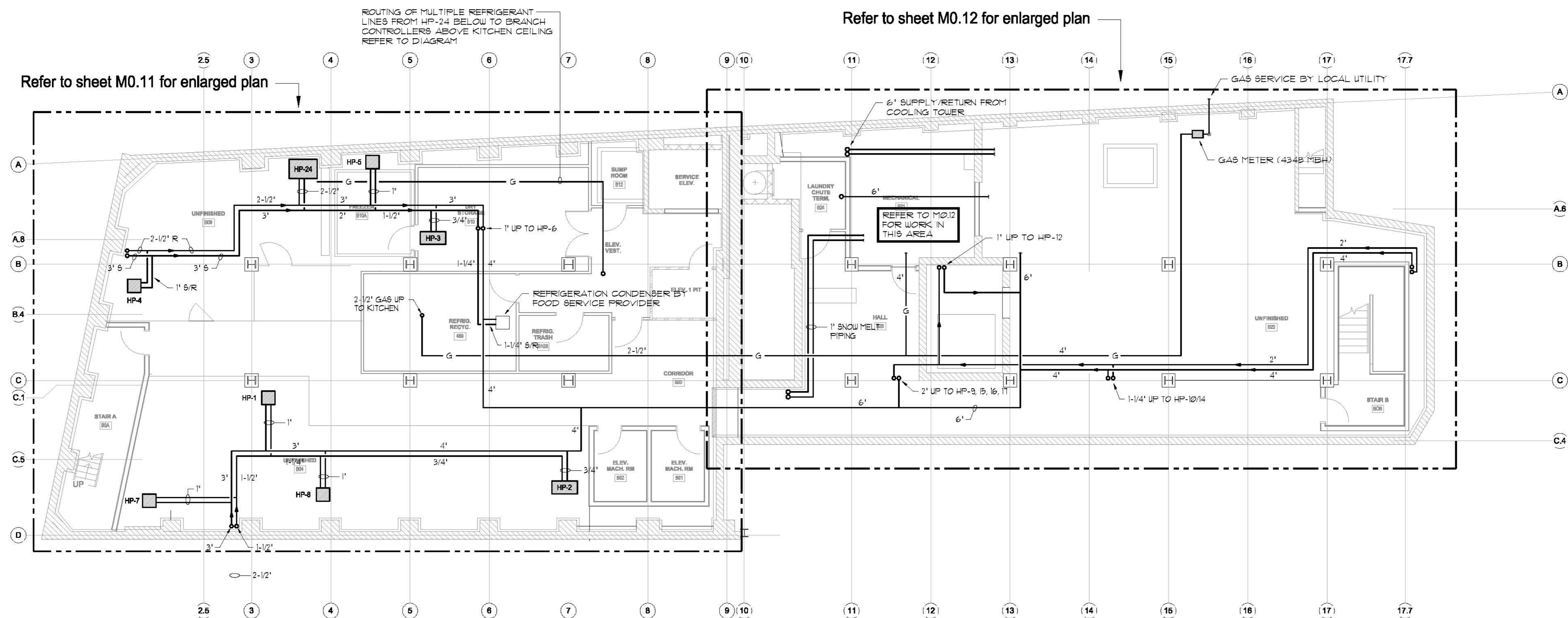
Architect:  
**ARCHETYPE** architects  
48 Union Wharf Portland, Maine 04101  
(207) 772-6022 Fax (207) 772-4036

Project:  
**PRESS HOTEL**  
390 CONGRESS STREET  
PORTLAND, MAINE

Revisions:	Date	Description
1	13-07-01	30% Marriott Submission
2	13-09-09	60% Marriott Sub. & Pric.
3	13-10-14	Issue for Bid & Marriott Revw

Date: 08 OCT 13  
Scale: 1/8" = 1'-0"  
**SUB-BASEMENT  
PLAN - HVAC**

**M0.10**



SUB-BASEMENT PLAN - HVAC  
SCALE: 1/8"=1'-0"

