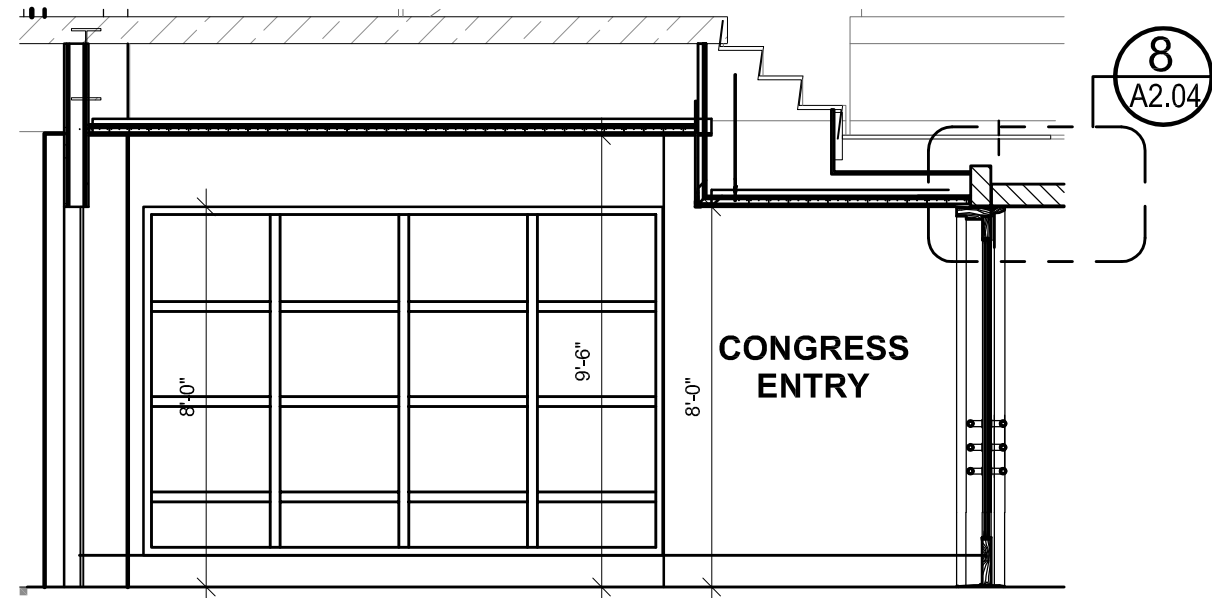


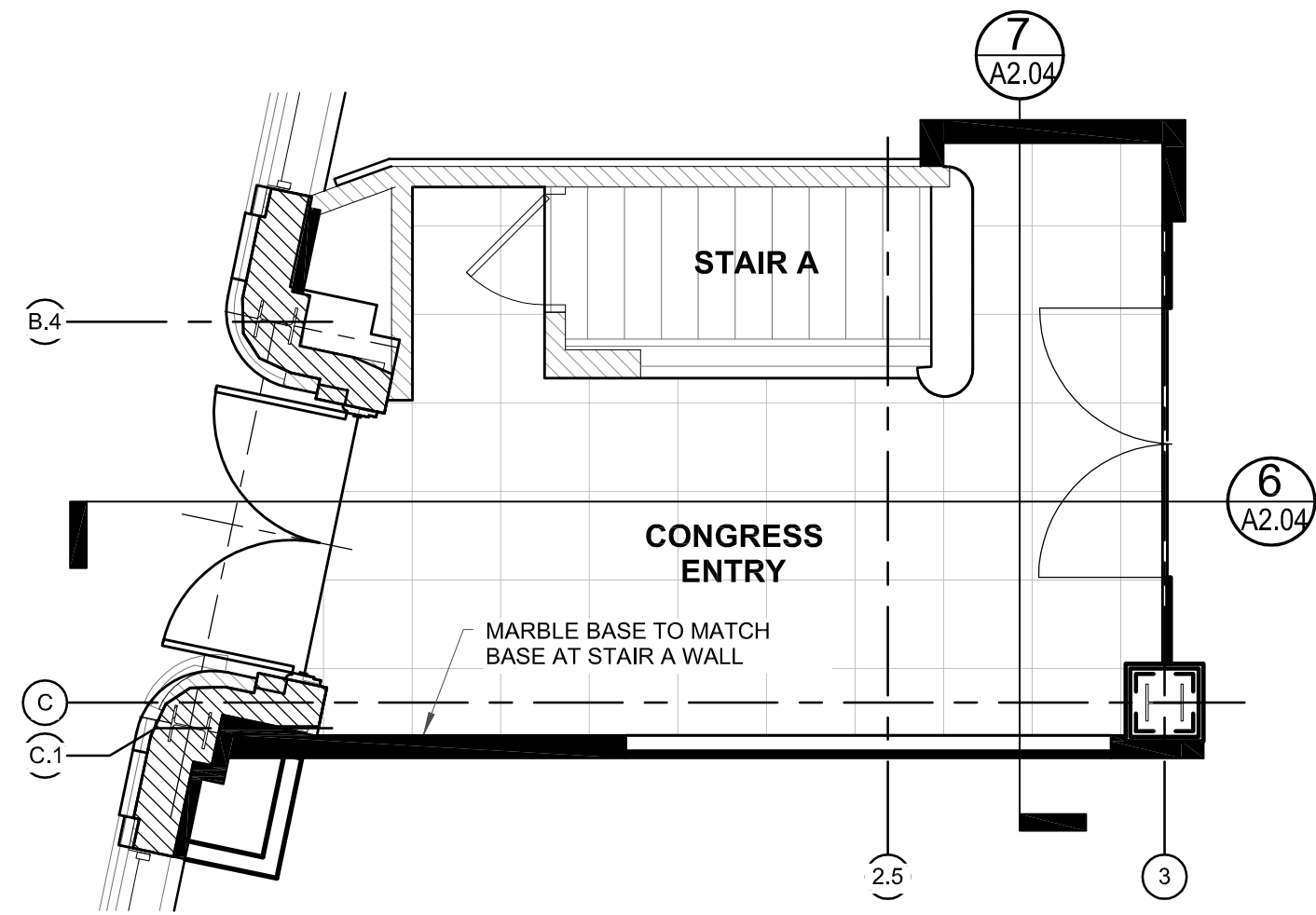
*NOTE: SEE AOR DRAWINGS.
TO BE COORDINATED BY AOR.

1 SECTION 2 AT CONGRESS STREET ENTRY
1/4" = 1'-0"



*NOTE: SEE AOR DRAWINGS.
TO BE COORDINATED BY AOR.

2 SECTION 1 AT CONGRESS STREET ENTRY
1/4" = 1'-0"



*NOTE: SEE AOR DRAWINGS.
TO BE COORDINATED BY AOR.

3 CONGRESS STREET ENTRY - PLAN
1/4" = 1'-0"

Prepared For:
**119 Development,
LLC**



Consultant:

Architect:
**ARCHETYPE
architects**
48 Union Wharf Portland, Maine 04101
(207) 772-6022 Fax (207) 772-4056

Project:
PRESS HOTEL
390 CONGRESS STREET
PORTLAND, ME 04101

Revisions:	Date	Description
1	13_07-01	30% Marriott Submission
2	13_09-09	60% Marriott Sub. & Pric.
3	13_10-14	Issue for Bid & Marriott Revw

Date: **08 OCT 13**
Scale:
**CONGRESS
STREET ENTRY**

RD-2.02

****PARTIAL BID SET. NOT FOR CONSTRUCTION****