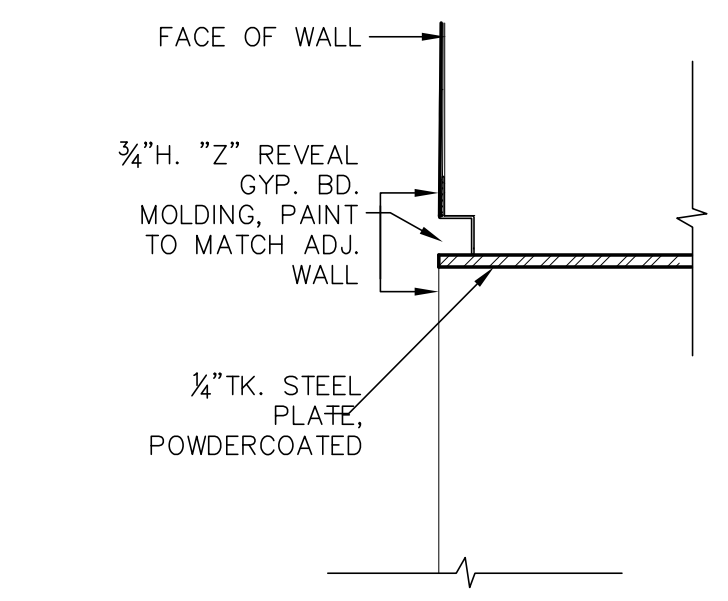
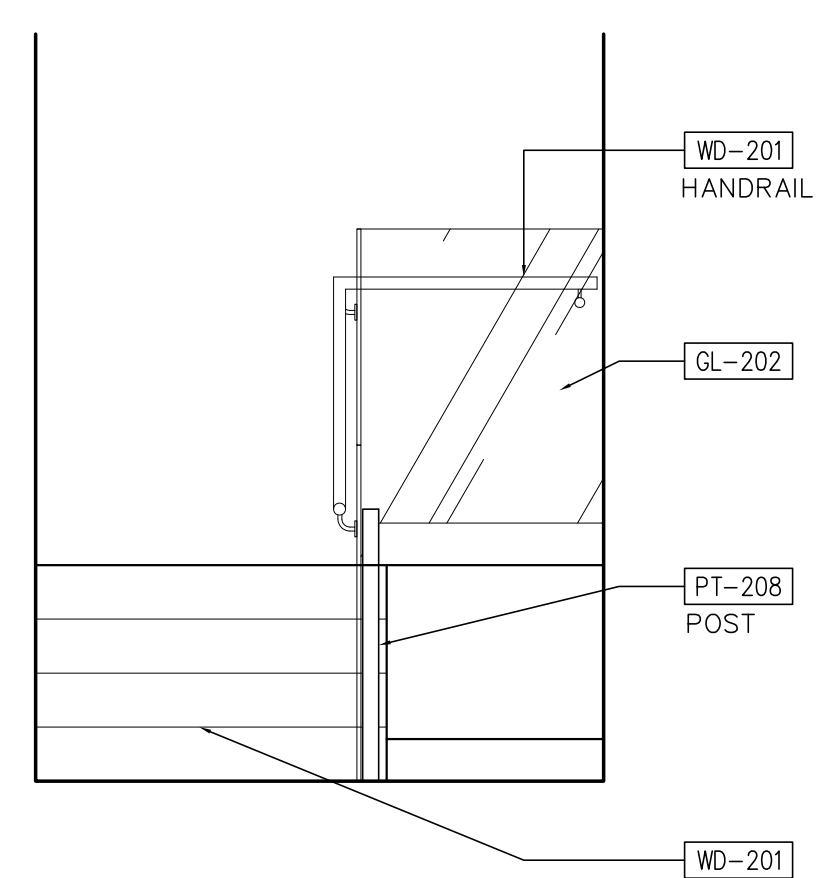


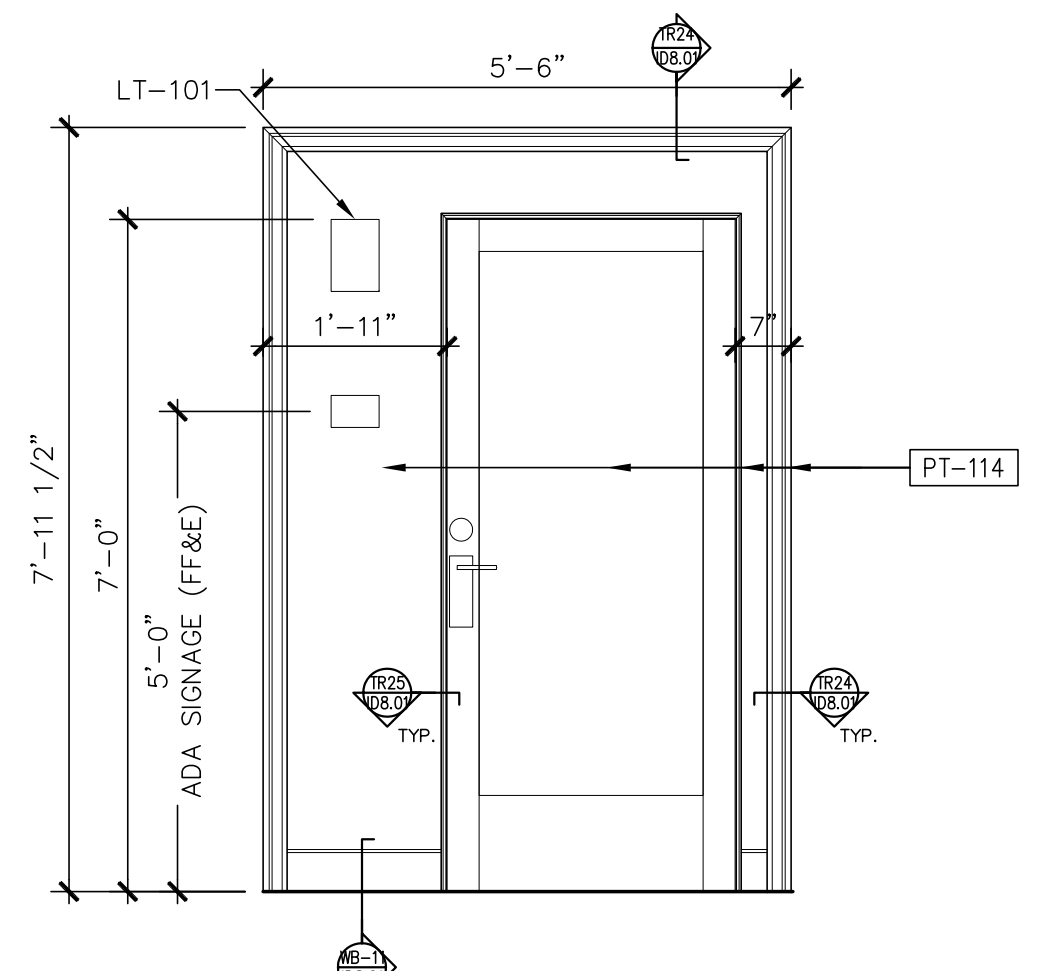
SECTION @ TYP.
24 SHOWER COVE LIGHT
1/2" = 1'-0"



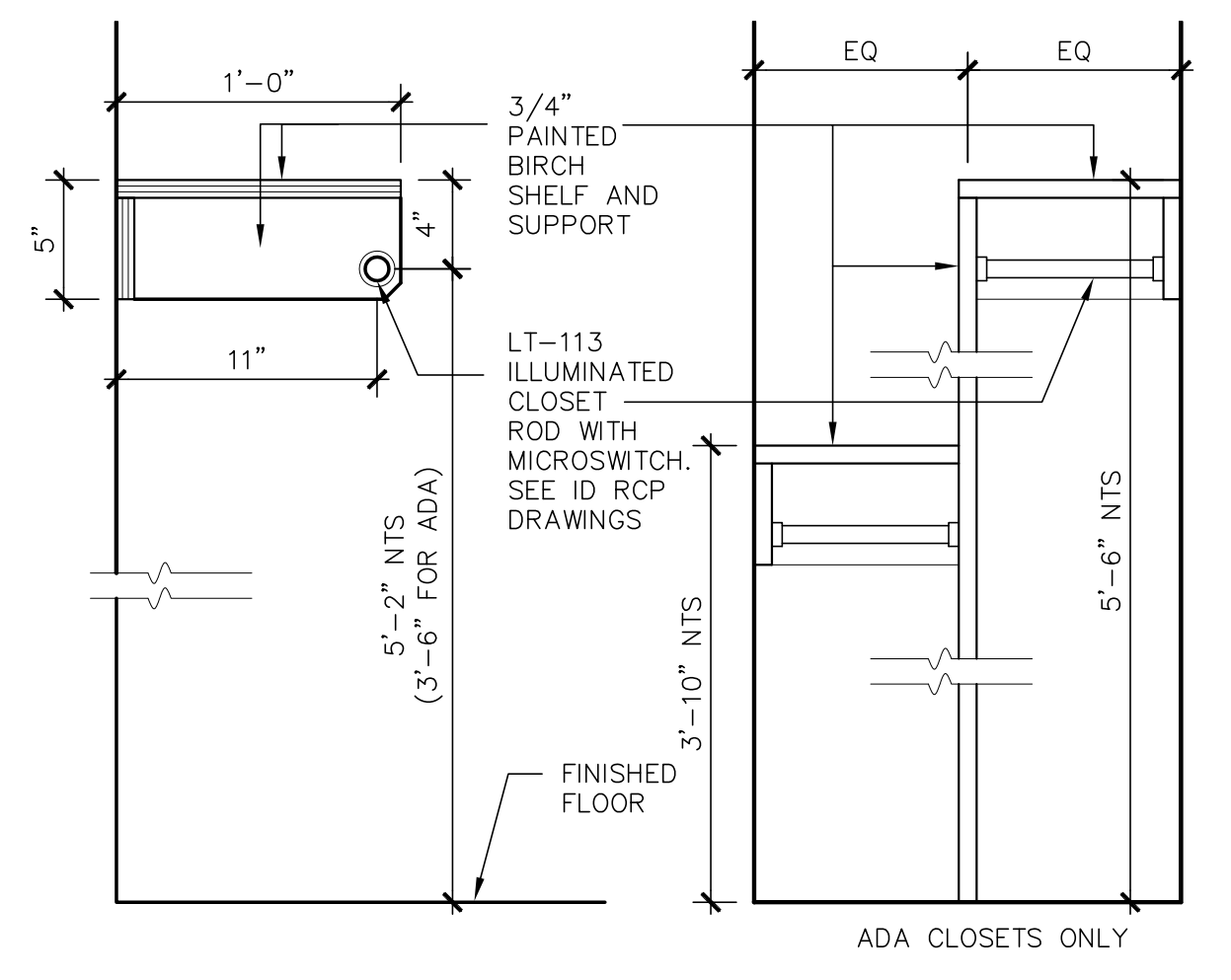
HEAD (JAMB SIMILAR) @
23 CASSED OPENING AT BELLMAN VESTIBULE
1/2" = 1'-0"



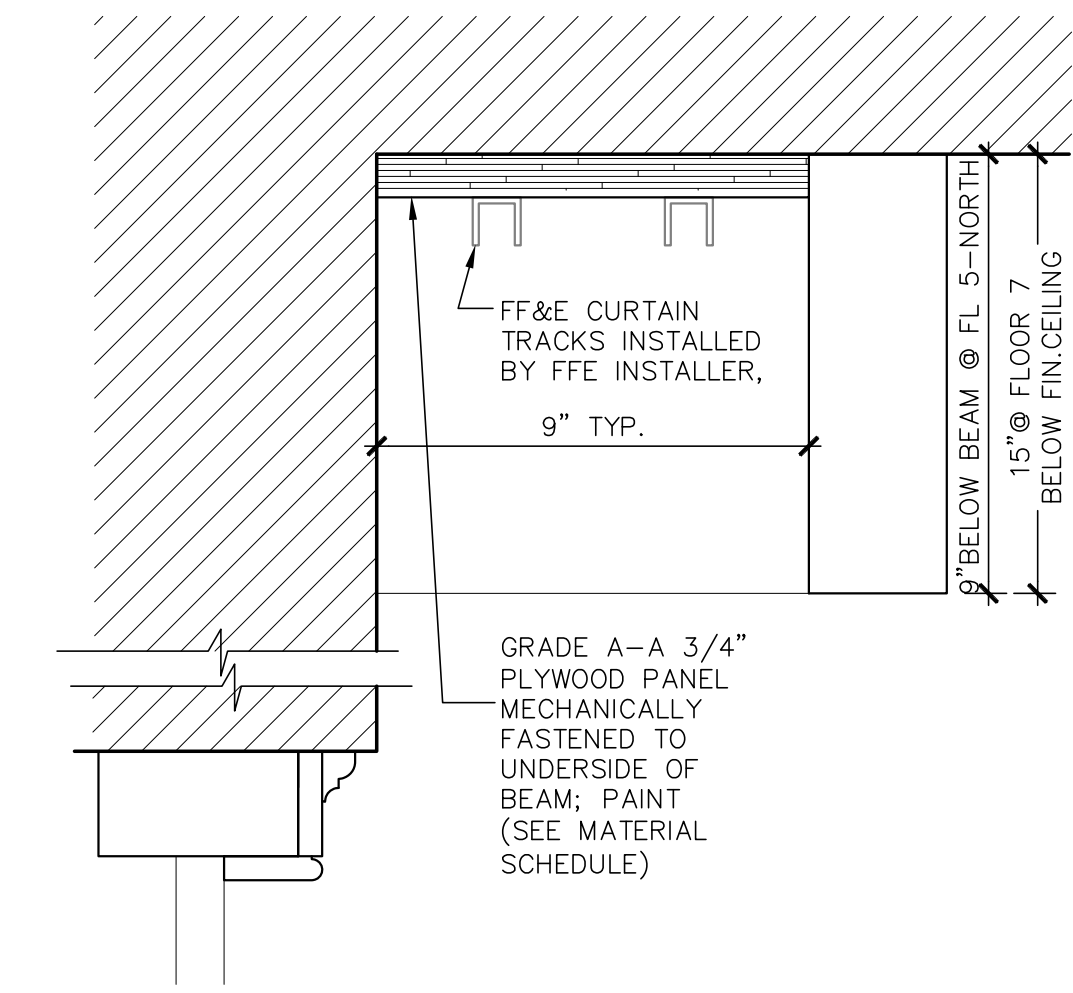
FLOOR 6
22 TYPICAL STAIR
1/2" = 1'-0"



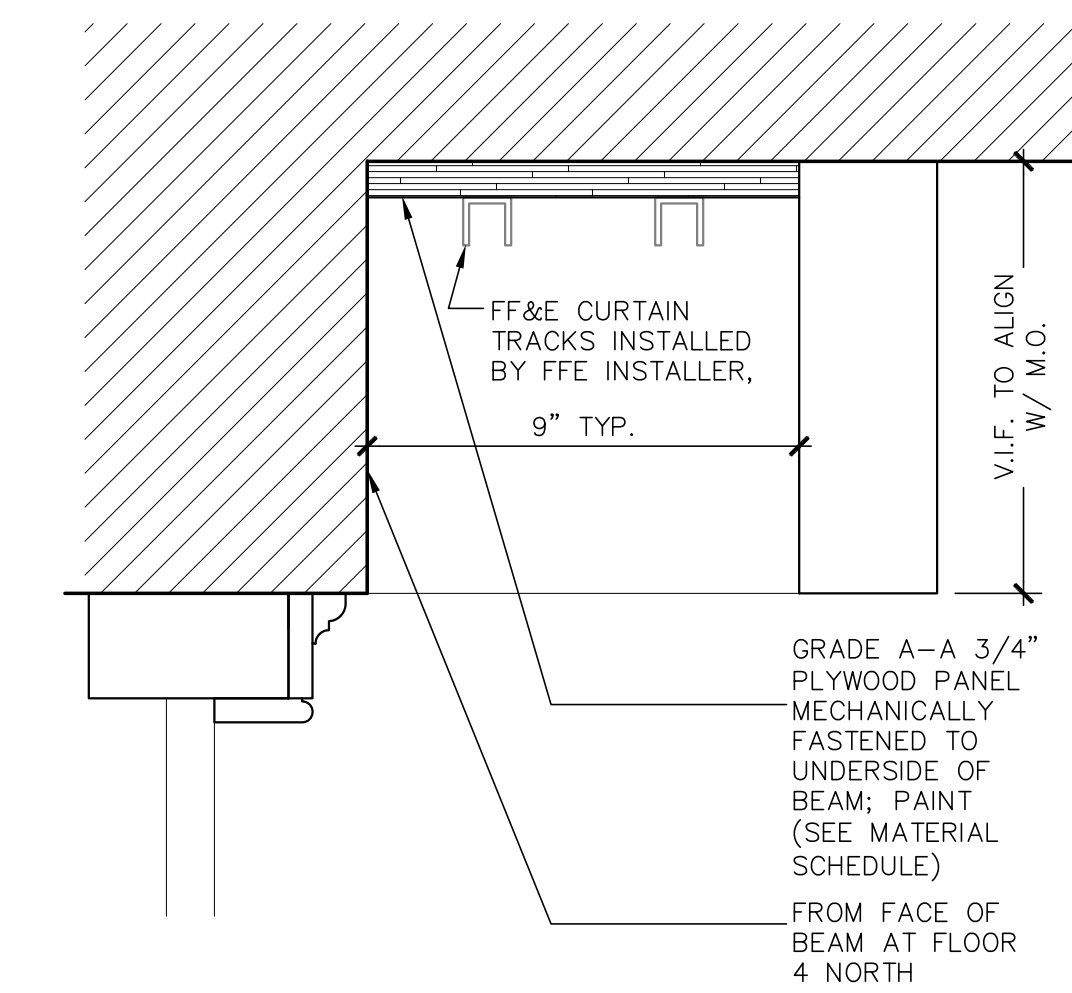
21 TYP. GUESTRM DR SURROUND
1/2" = 1'-0"



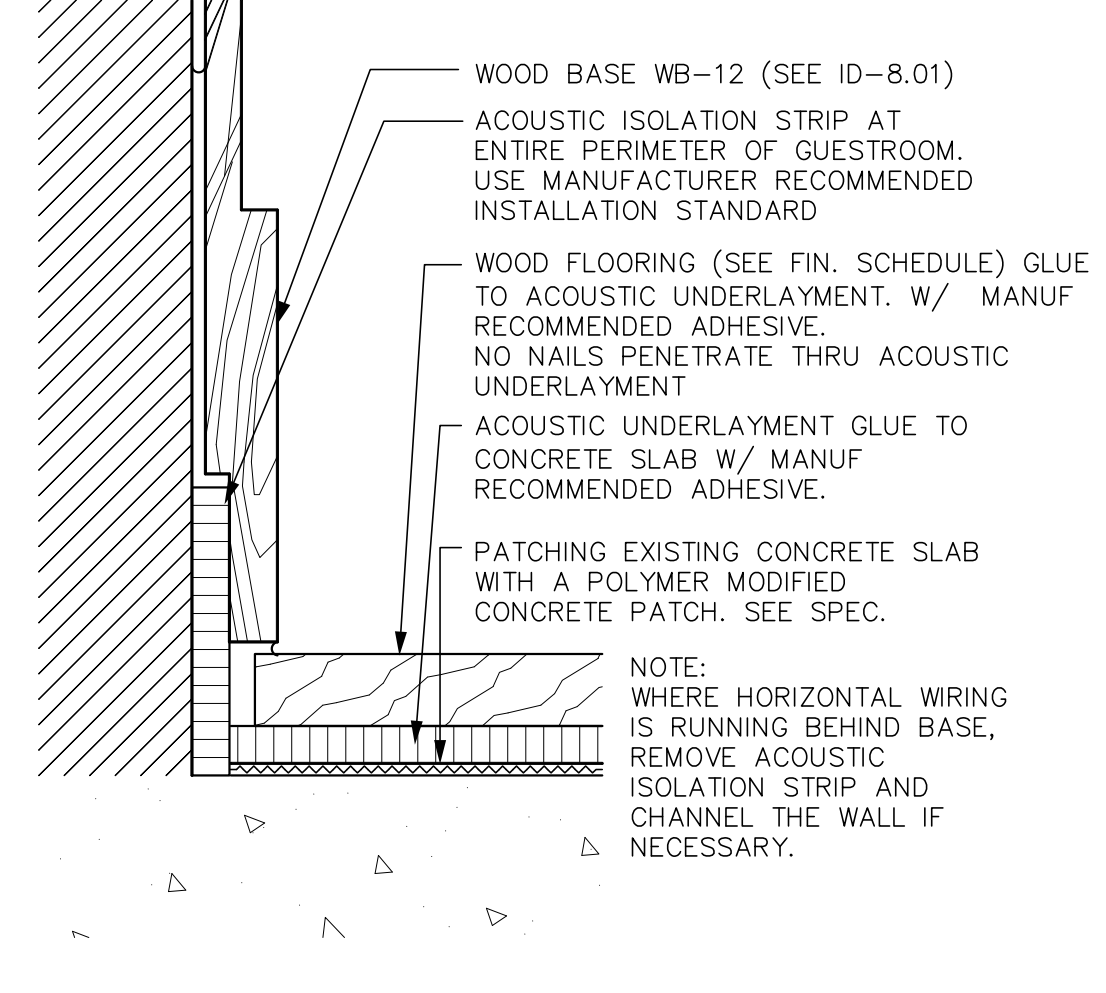
SECTION @ CLOTHES POLE &
20 SHELF - GUESTROOMS
1/2" = 1'-0"



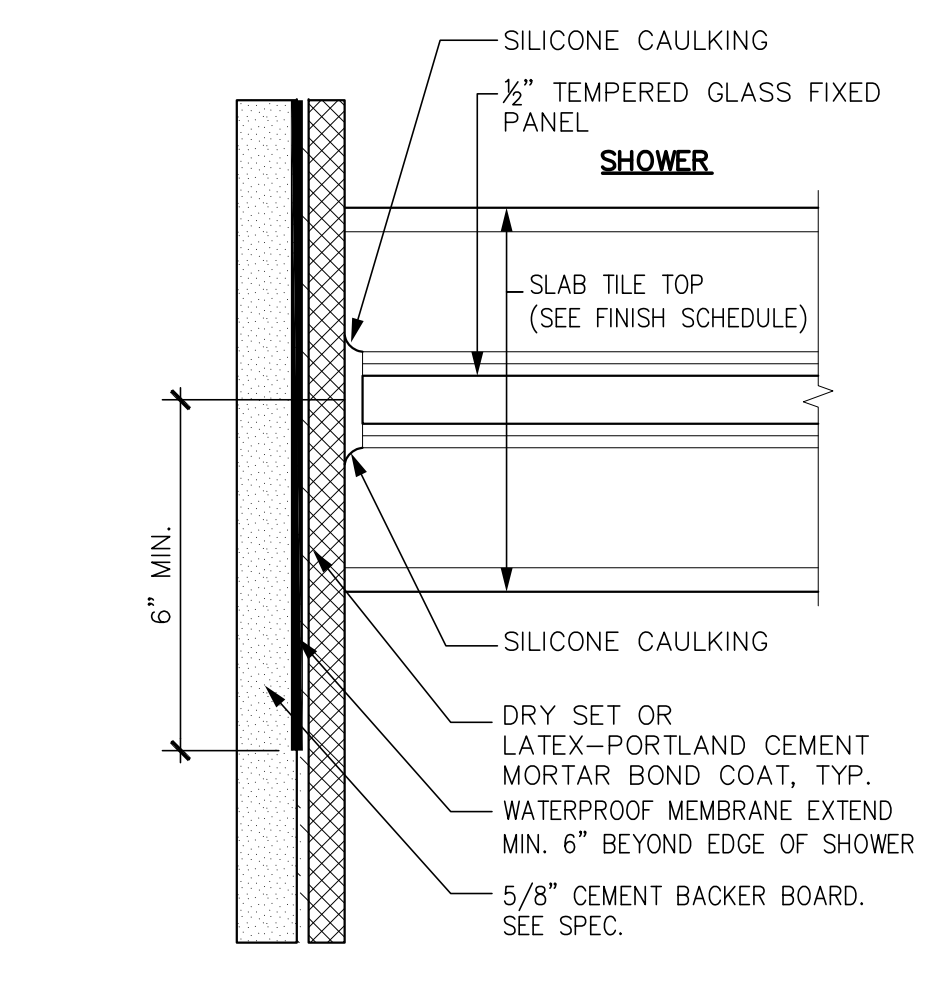
14 DRAPERY VALANCE DETAIL @ 5TH FLOOR NORTH & 7TH FLOOR
1/2" = 1'-0"



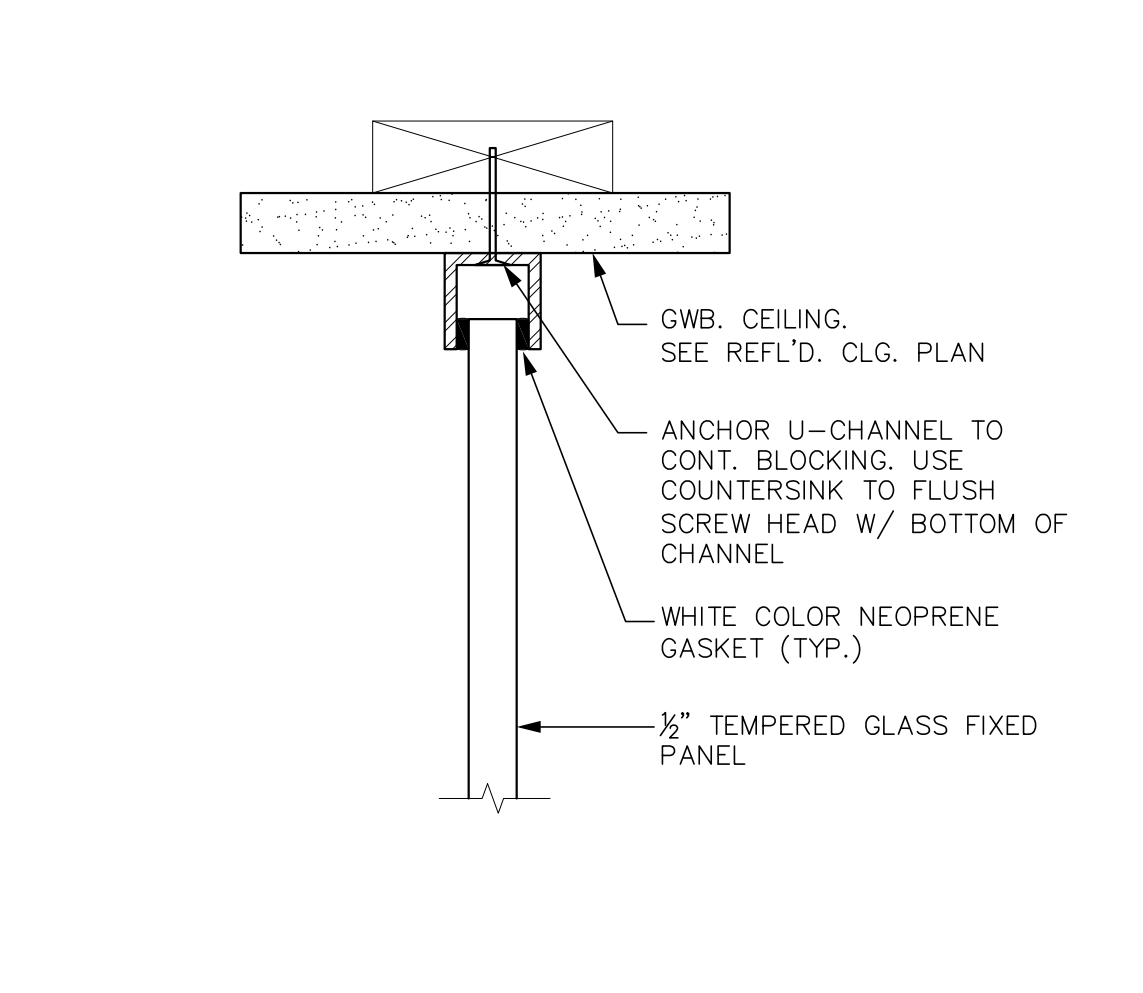
13 DRAPERY VALANCE DETAIL
@ FLOORS 2-4, FLOOR 5 SOUTH & 6TH FLOOR
1/2" = 1'-0"



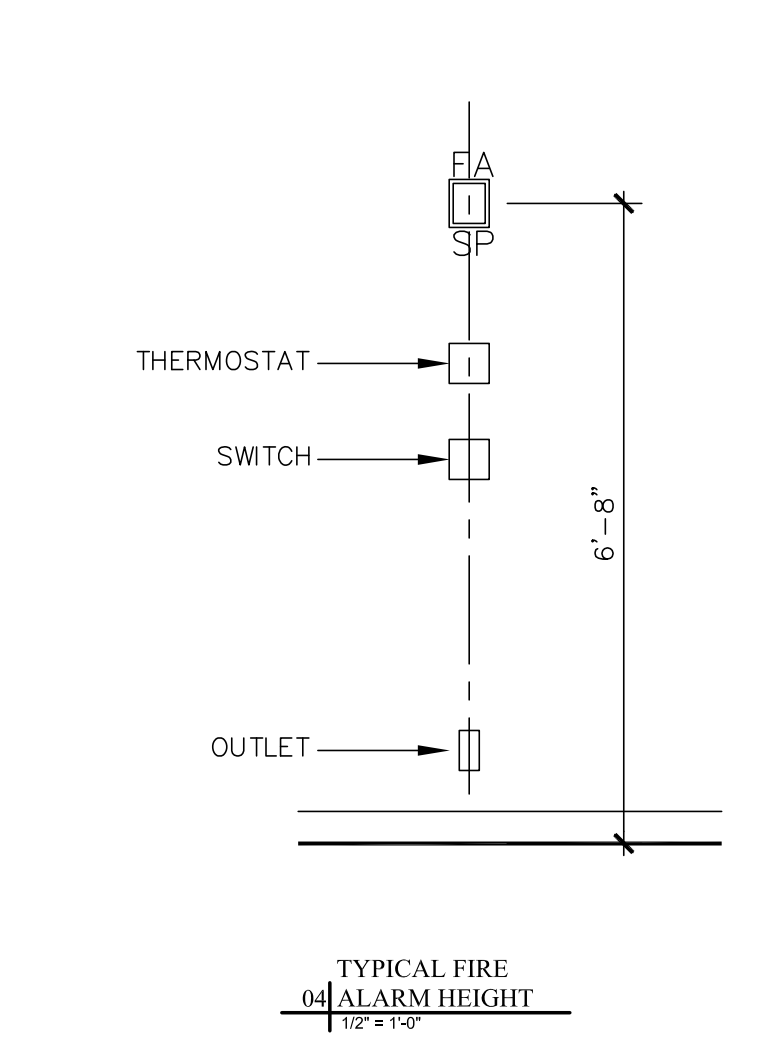
12 WOOD FLOOR AND BASE DETAIL
1/2" = 1'-0"



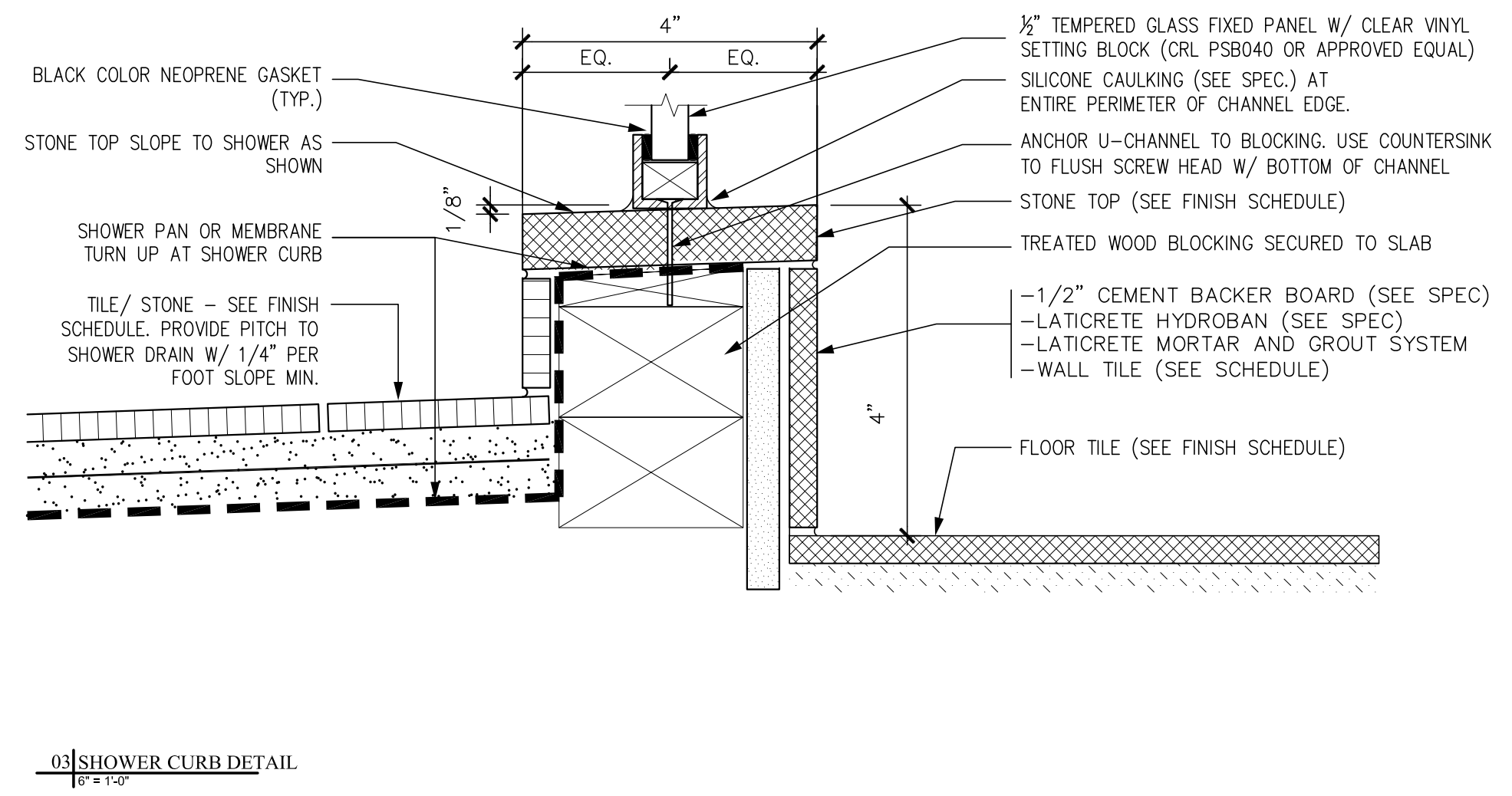
FIXED GLASS PARTITION
11 JAMB DETAIL AT SHOWER
1/2" = 1'-0"



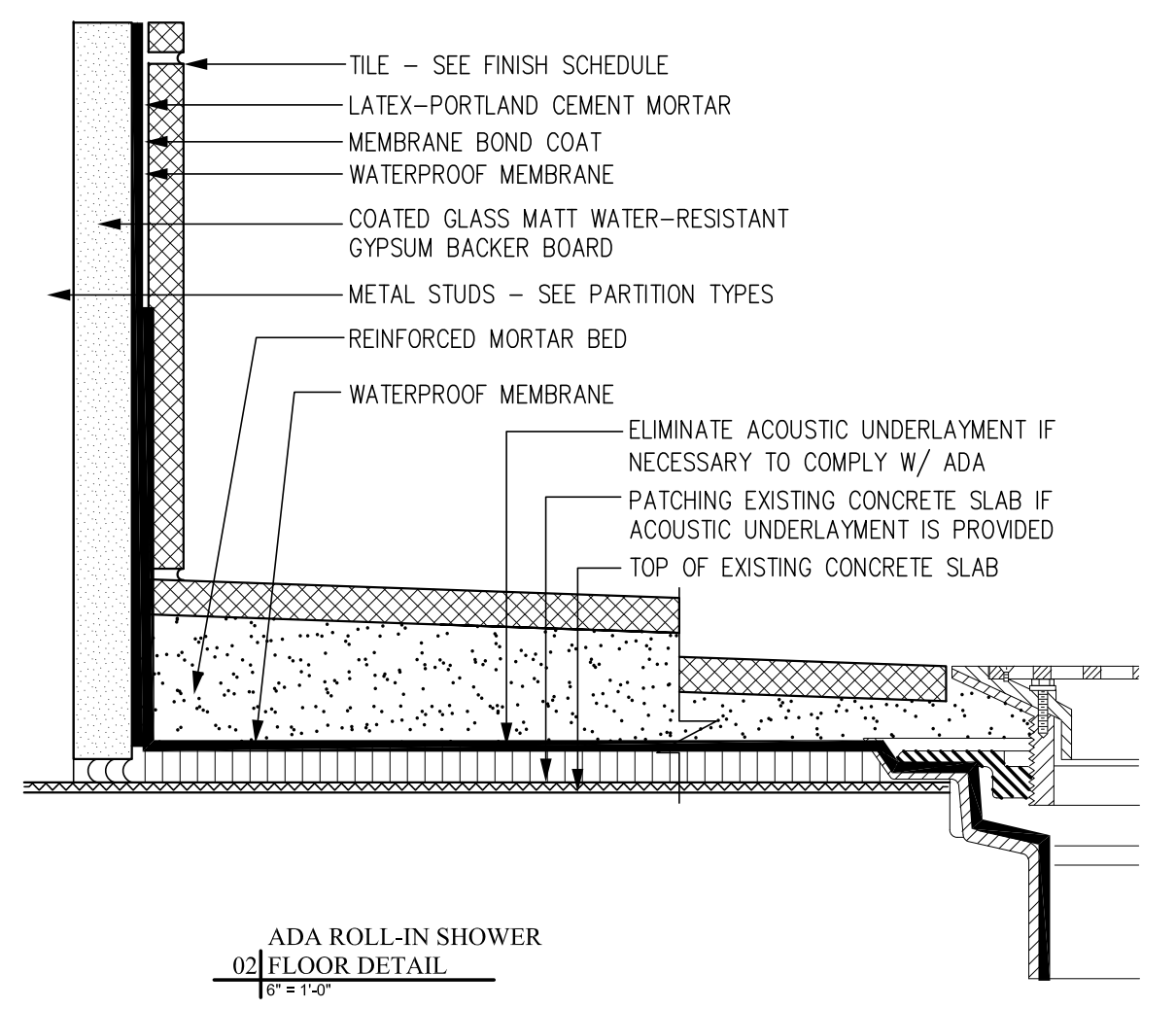
FIXED GLASS PARTITION
10 HEAD DETAIL AT SHOWER
1/2" = 1'-0"



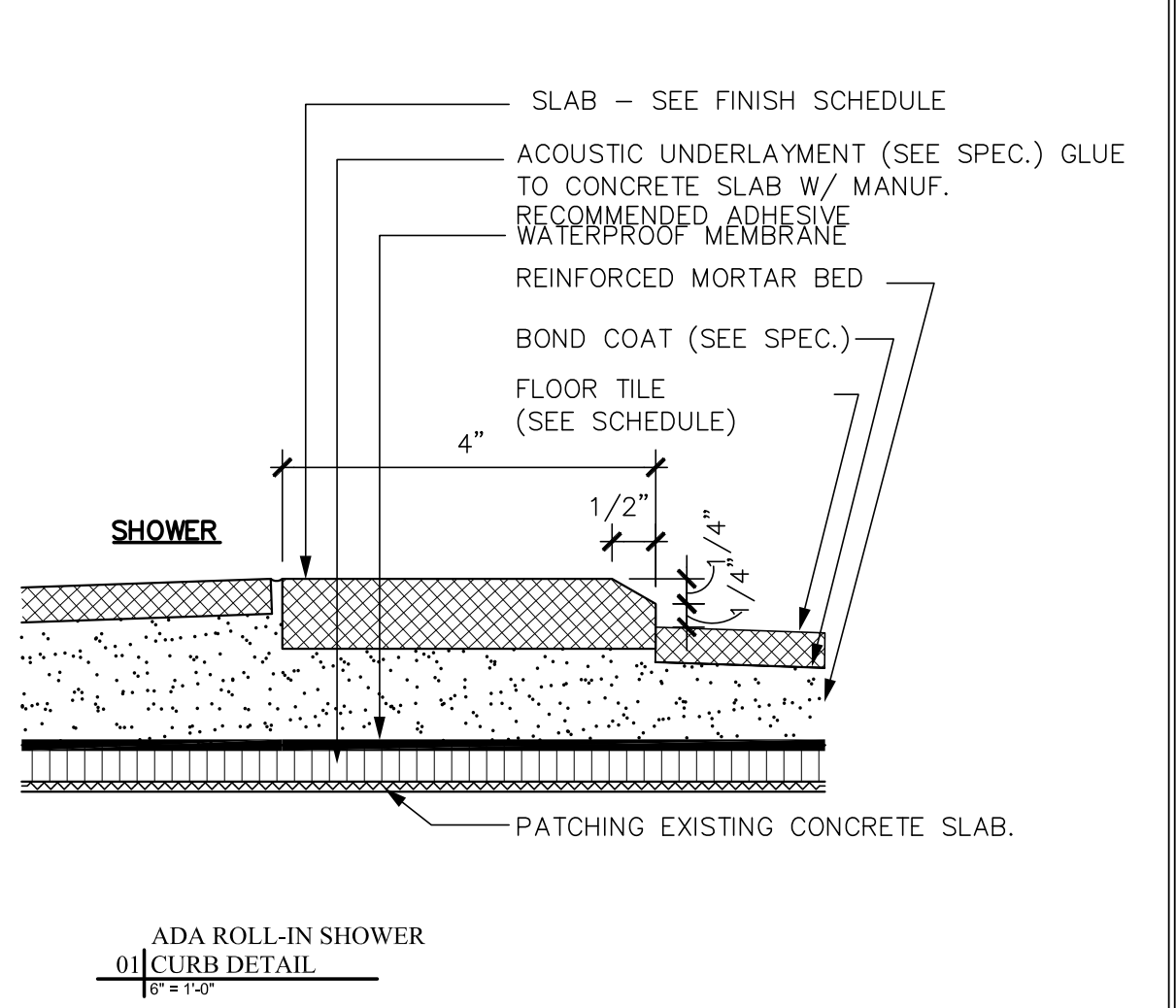
TYPICAL FIRE
04 ALARM HEIGHT
1/2" = 1'-0"



03 SHOWER CURB DETAIL
1/2" = 1'-0"



ADA ROLL-IN SHOWER
02 FLOOR DETAIL
1/2" = 1'-0"



ADA ROLL-IN SHOWER
01 CURB DETAIL
1/2" = 1'-0"

Prepared For: **119 Development, LLC**
P.O. Box 7468
Portland, ME 04112

Consultant: **STONEHILL & TAYLOR ARCHITECTS AND PLANNERS**
31 W. 27th Street New York, NY 10001
(212) 226-8898 Fax (212) 941-1874

Architect: **ARCHETYPE architects**
48 Union Wharf Portland, Maine 04101
(207) 772-6022 Fax (207) 772-4056

Project: **Press Hotel**
119 Exchange St.
Portland, ME 04101

Revisions:	Date:	Scale:
1	13-07-01	30% Marriott Submission
2	13-09-09	60% Marriott Sub. & Pric.
3	13-10-14	Issue for Bid & Marriott Rev.

Date: **06 SEPT, 2013**
Scale: **6" = 1'-0"**
INTERIOR GUESTROOM DETAILS

ID-8.02