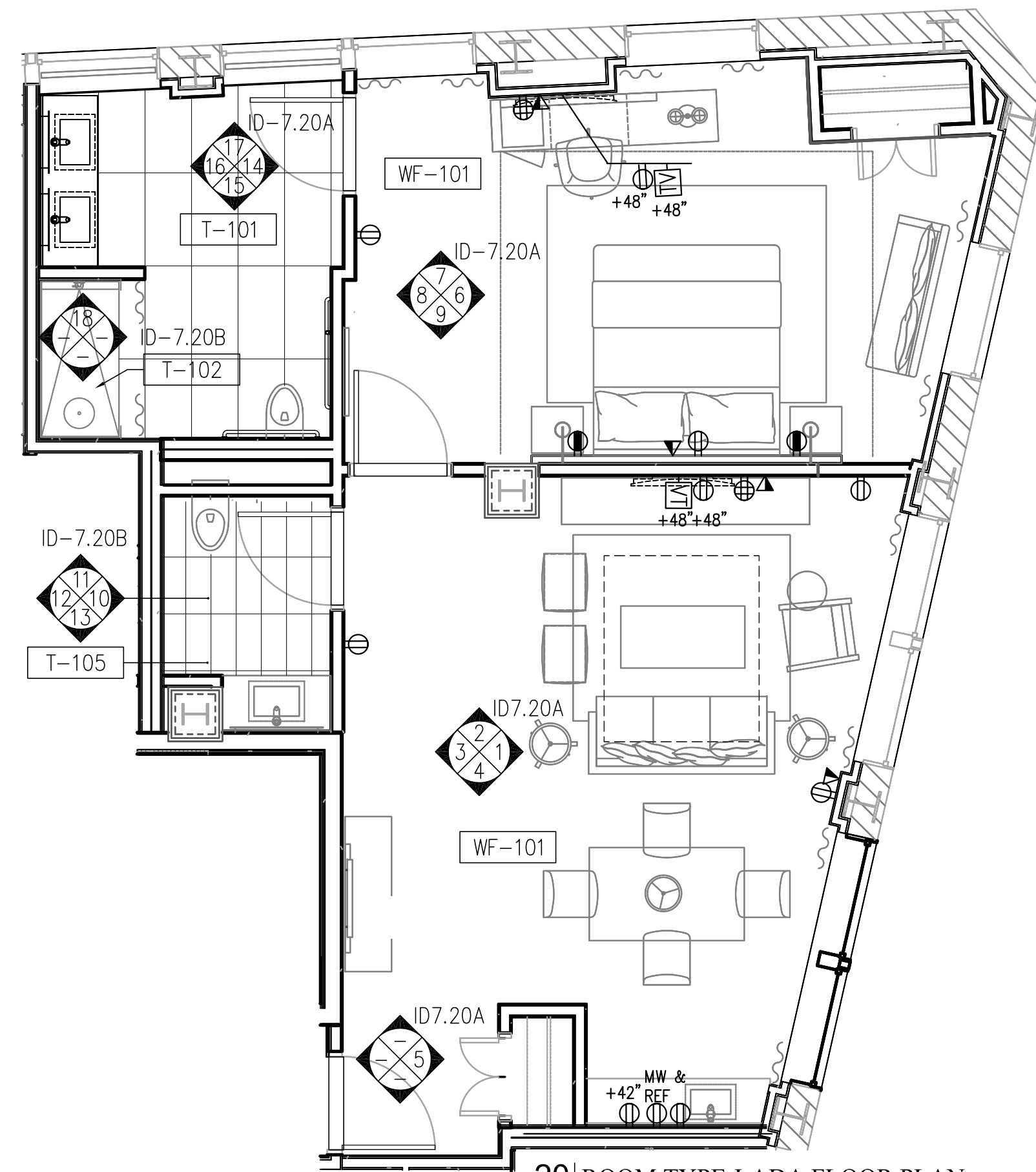
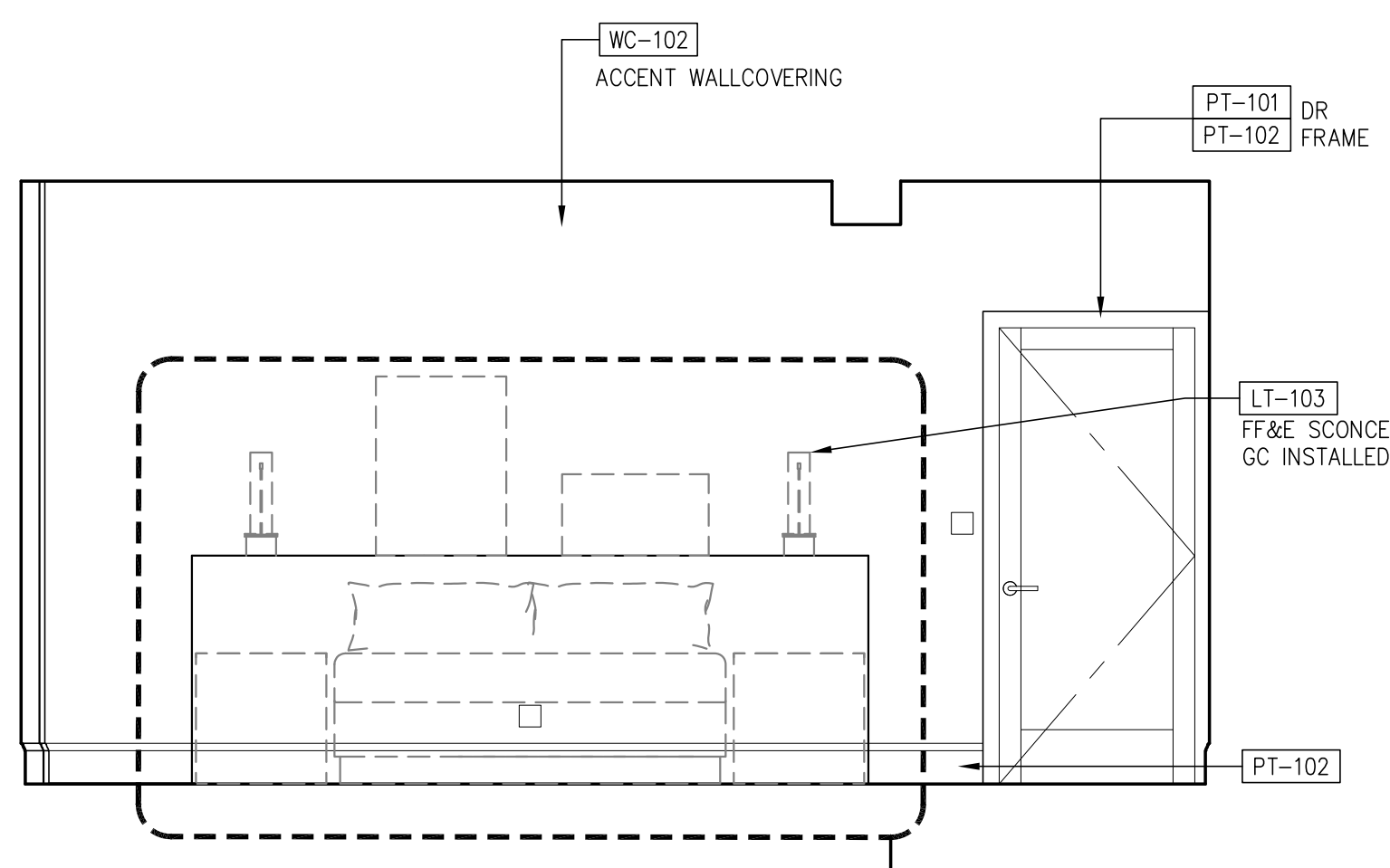


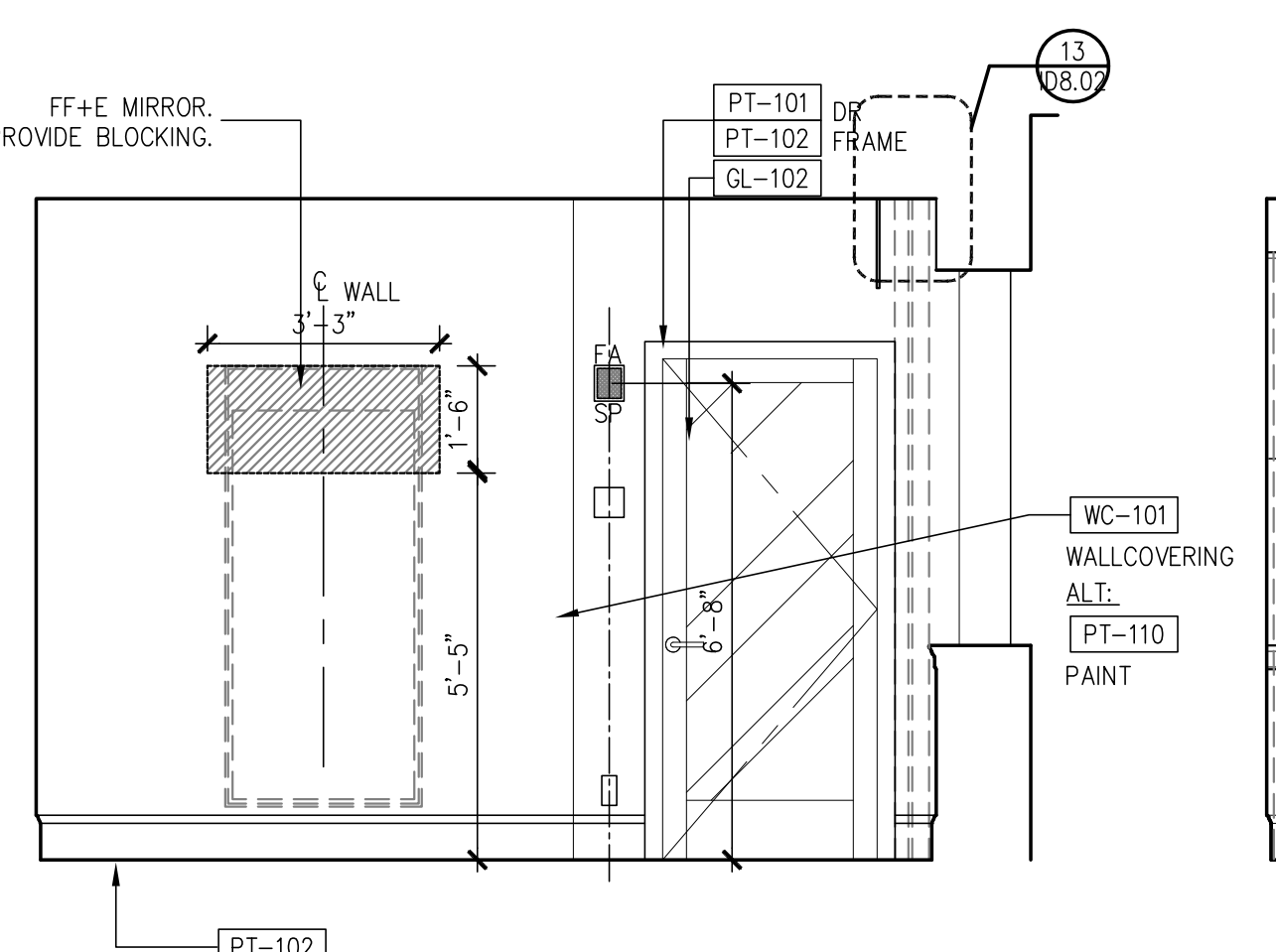
21 ROOM TYPE J-ADA REFLECTED CEILING PLAN
1/4" = 1'-0"



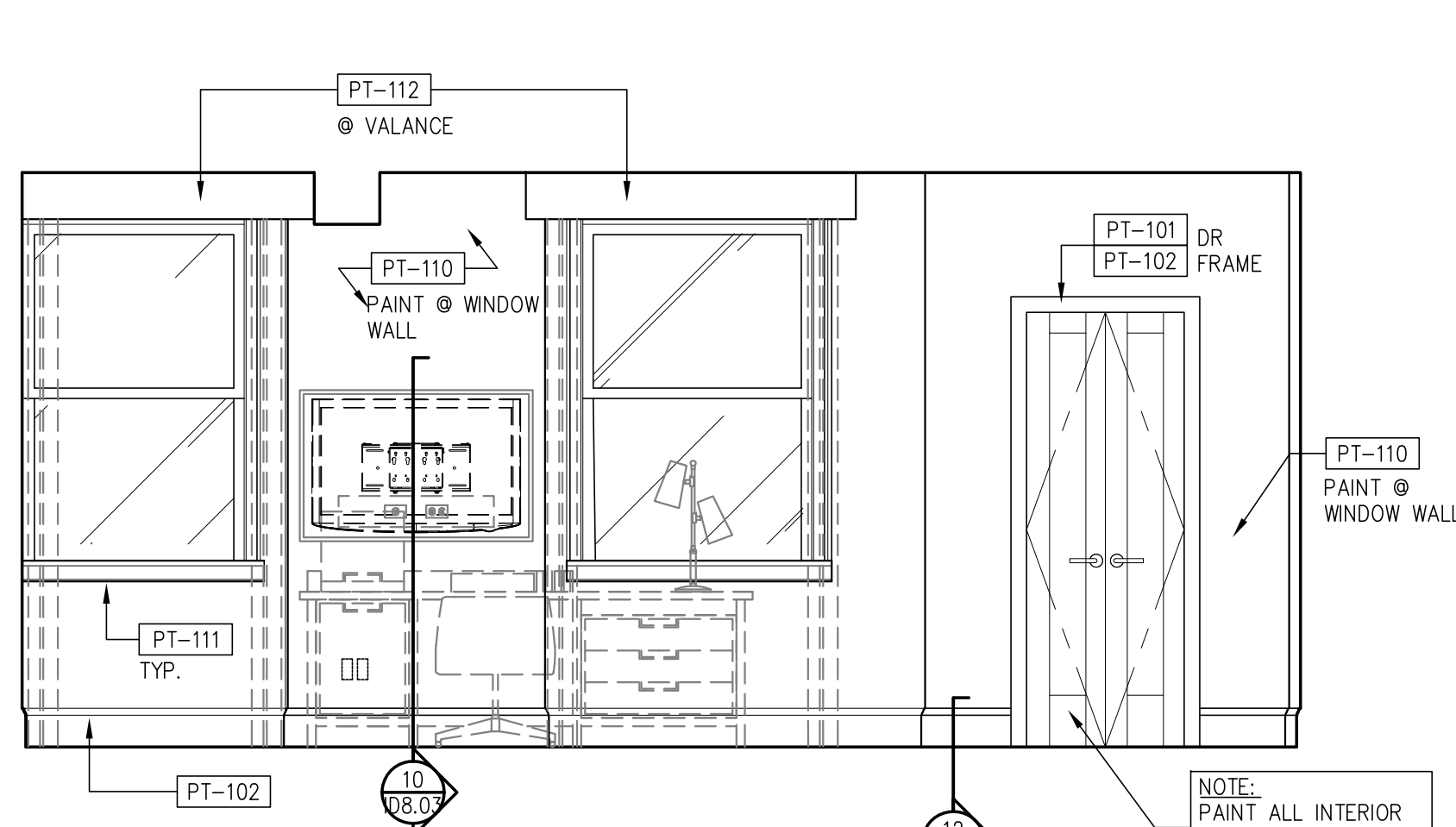
20 ROOM TYPE J-ADA FLOOR PLAN
1/4" = 1'-0"



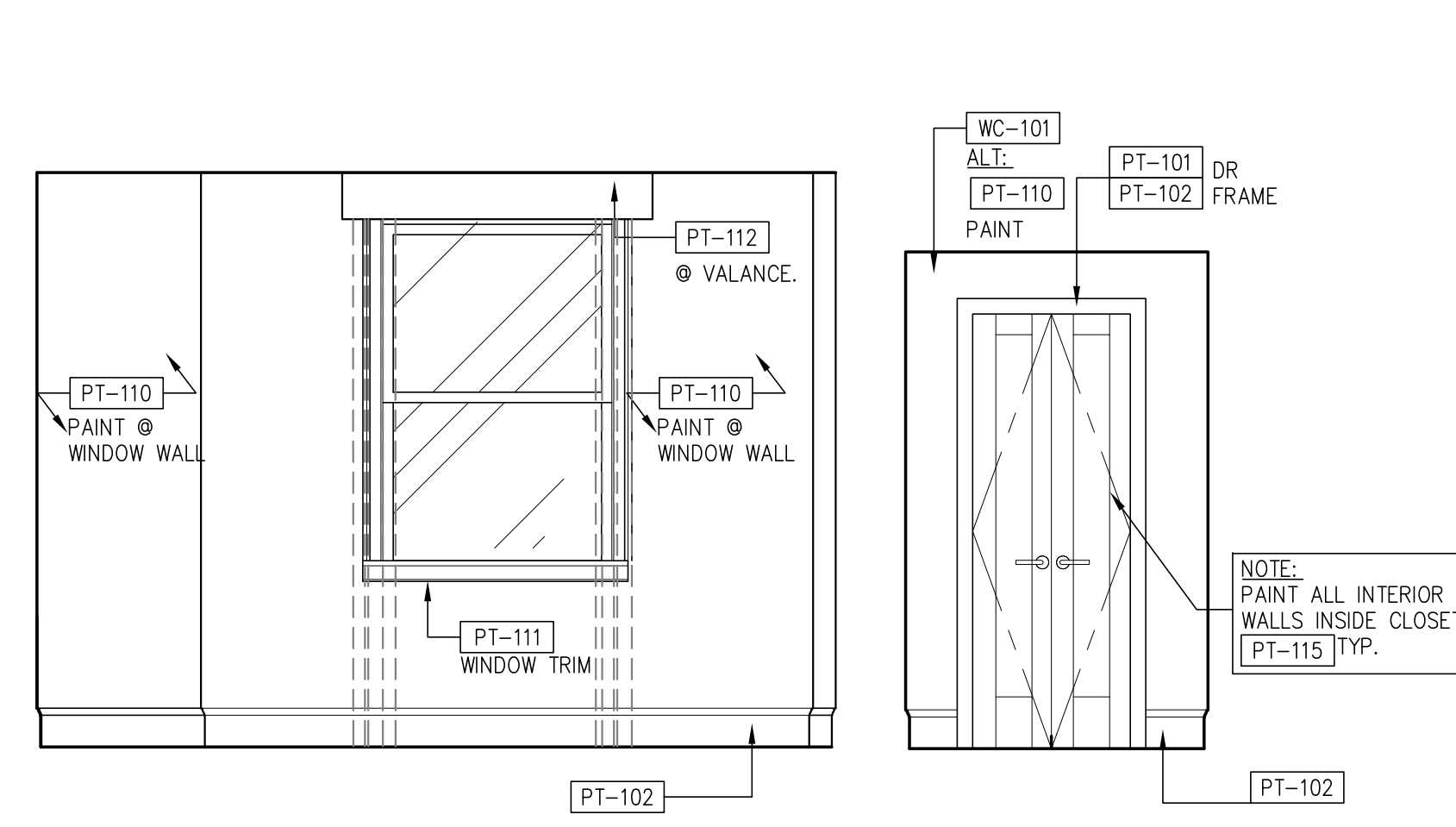
9 BEDROOM ELEVATION
3/8" = 1'-0"



8 BEDROOM ELEVATION
3/8" = 1'-0"

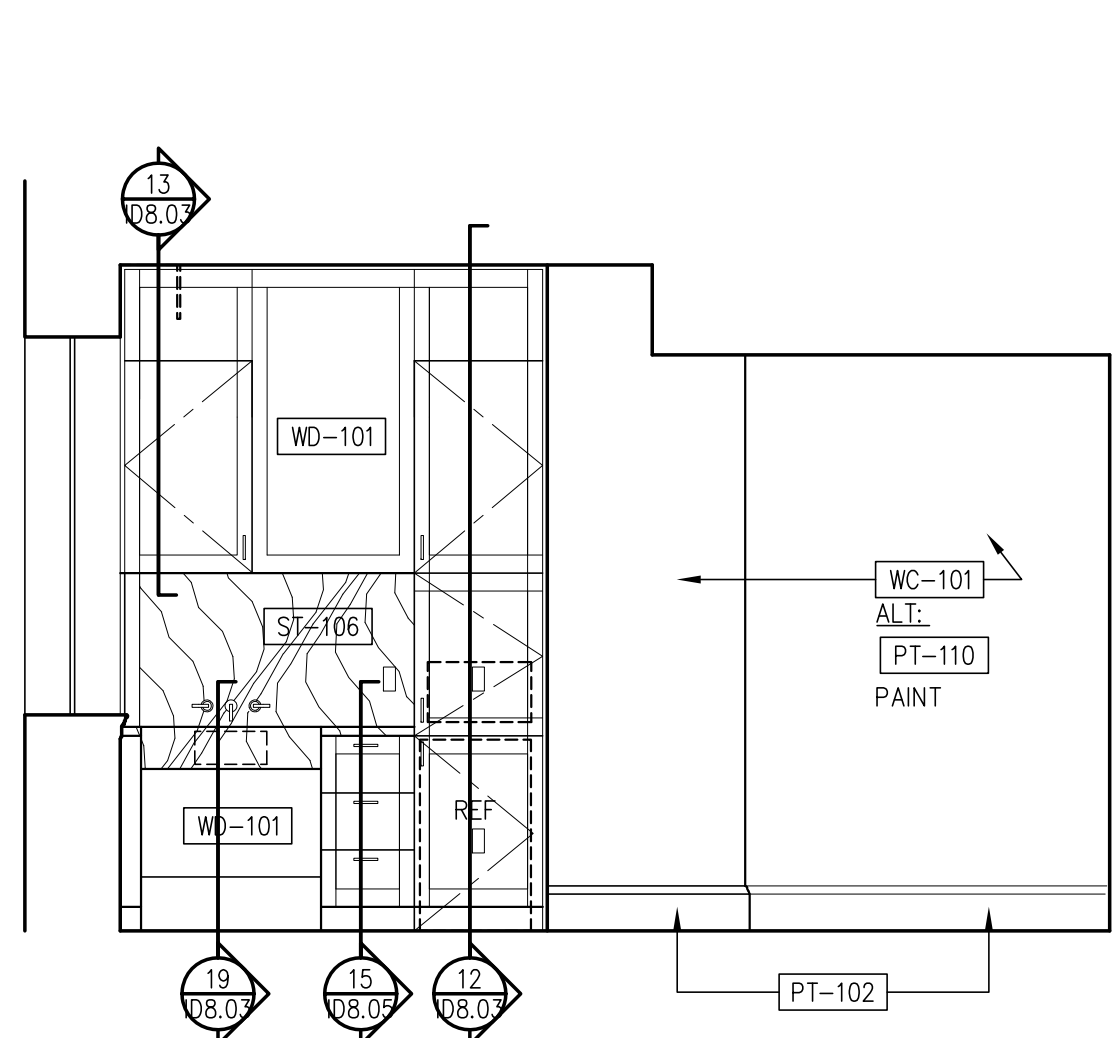


7 BEDROOM ELEVATION
3/8" = 1'-0"

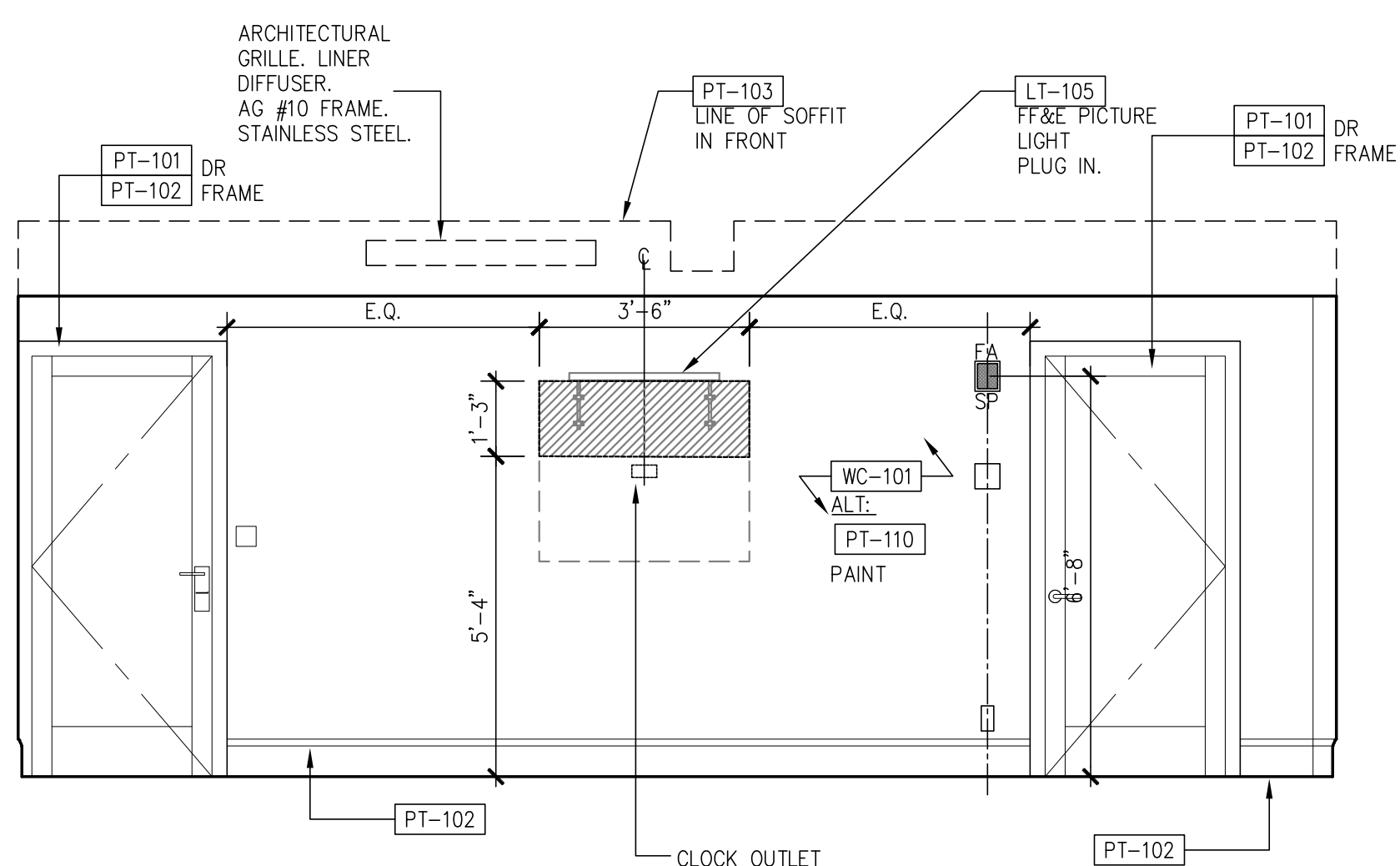


6 BEDROOM ELEVATION
3/8" = 1'-0"

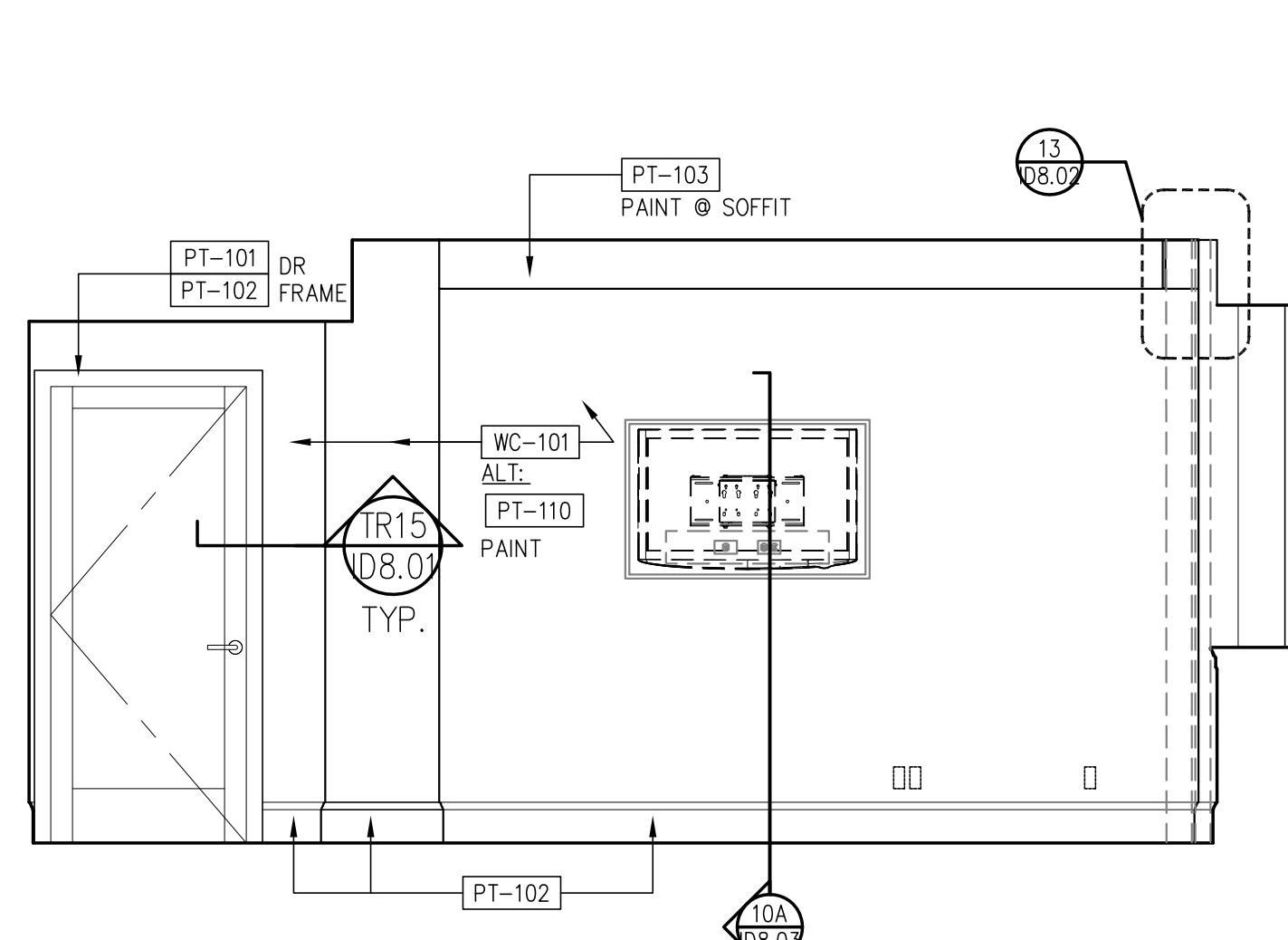
5 LIVING ROOM ELEVATION
3/8" = 1'-0"



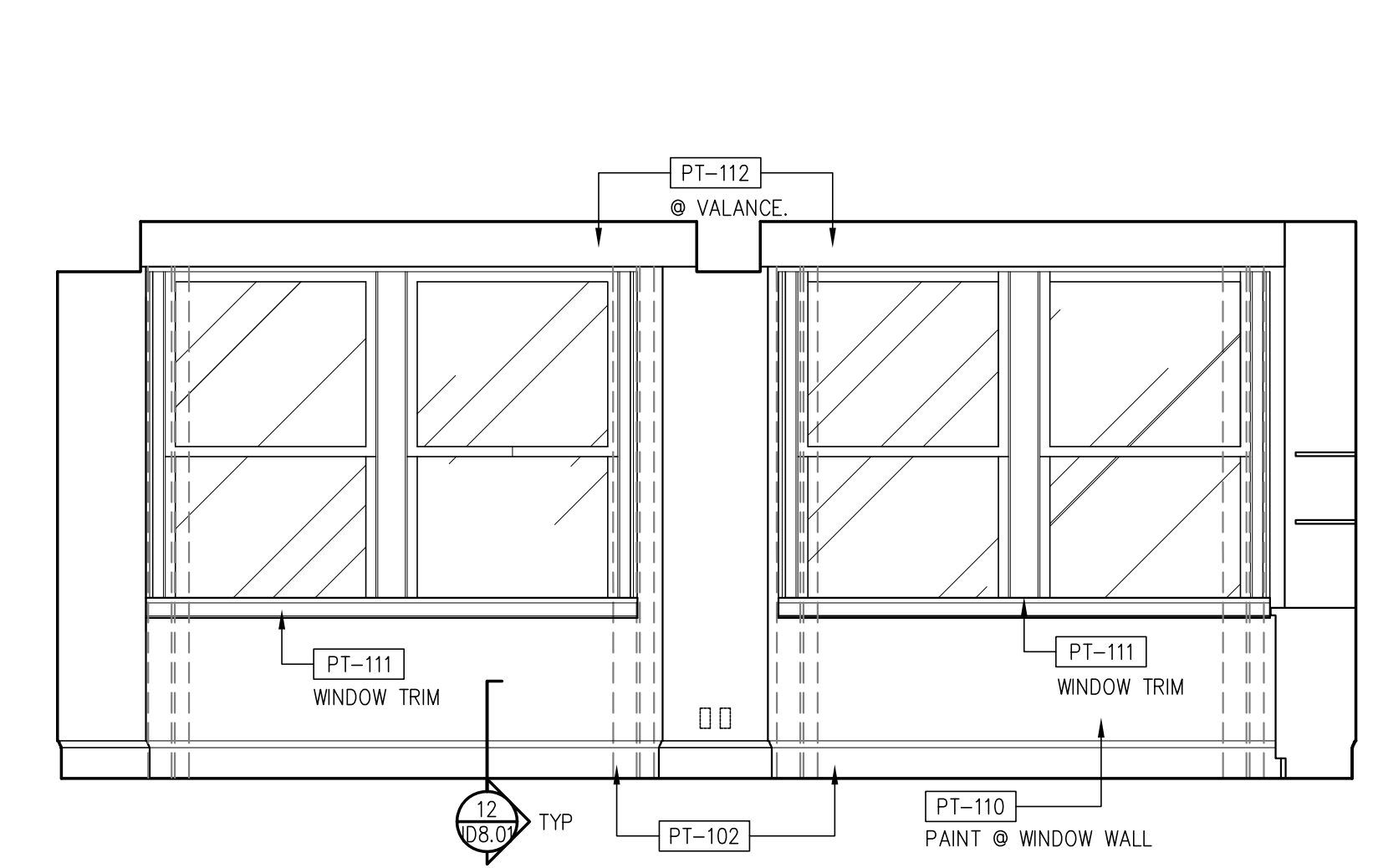
4 LIVING ROOM ELEVATION
3/8" = 1'-0"



3 LIVING ROOM ELEVATION
3/8" = 1'-0"



2 LIVING ROOM ELEVATION
3/8" = 1'-0"



1 LIVING ROOM ELEVATION
3/8" = 1'-0"

Prepared For:	119 Development, LLC P.O. Box 7468 Portland, ME 04112
Consultant:	STONEHILL & TAYLOR ARCHITECTS AND PLANNERS 31 W. 27th Street New York, NY 10001 (212) 226-8898 Fax (212) 941-1874
Architect:	ARCHETYPE architects 48 Union Wharf Portland, Maine 04101 (207) 772-6022 Fax (207) 772-4056
Project:	Press Hotel 119 Exchange St. Portland, ME 04101
Revisions:	1 03-07-01 30% Marriott Submission 2 03-09-09 60% Marriott Sub. & Pric. 3 03-10-14 Issue for Bid & Marriott Rev.
Date:	06 SEPT, 2013
Scale:	RM TYPE J-ADA PLANS & ELEVATIONS

ID-7.20a