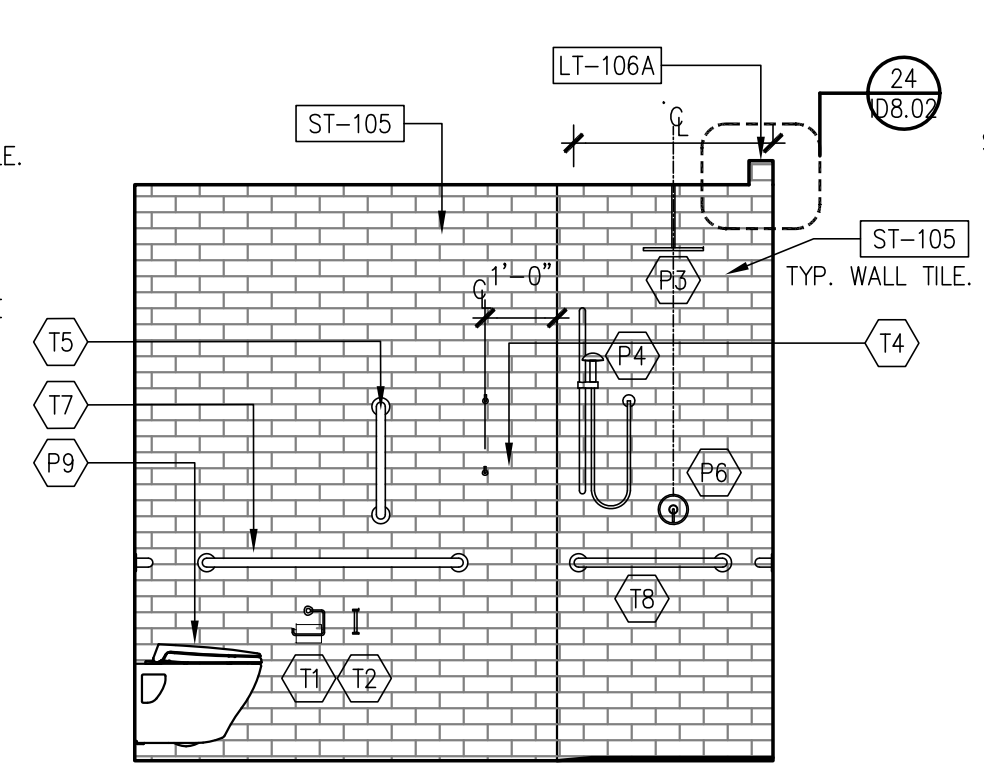
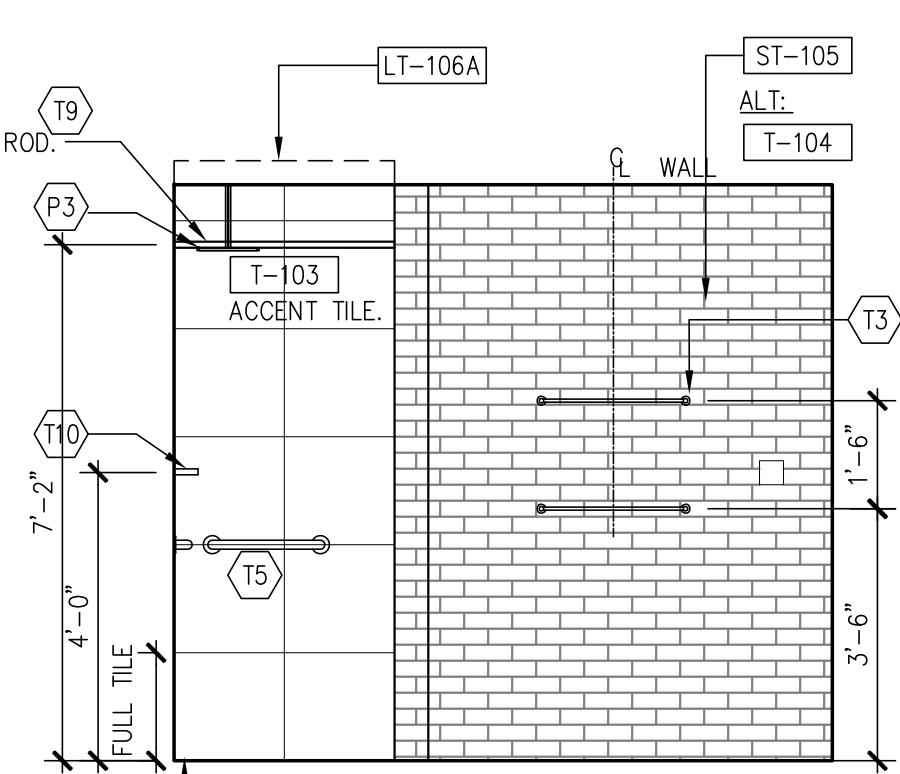


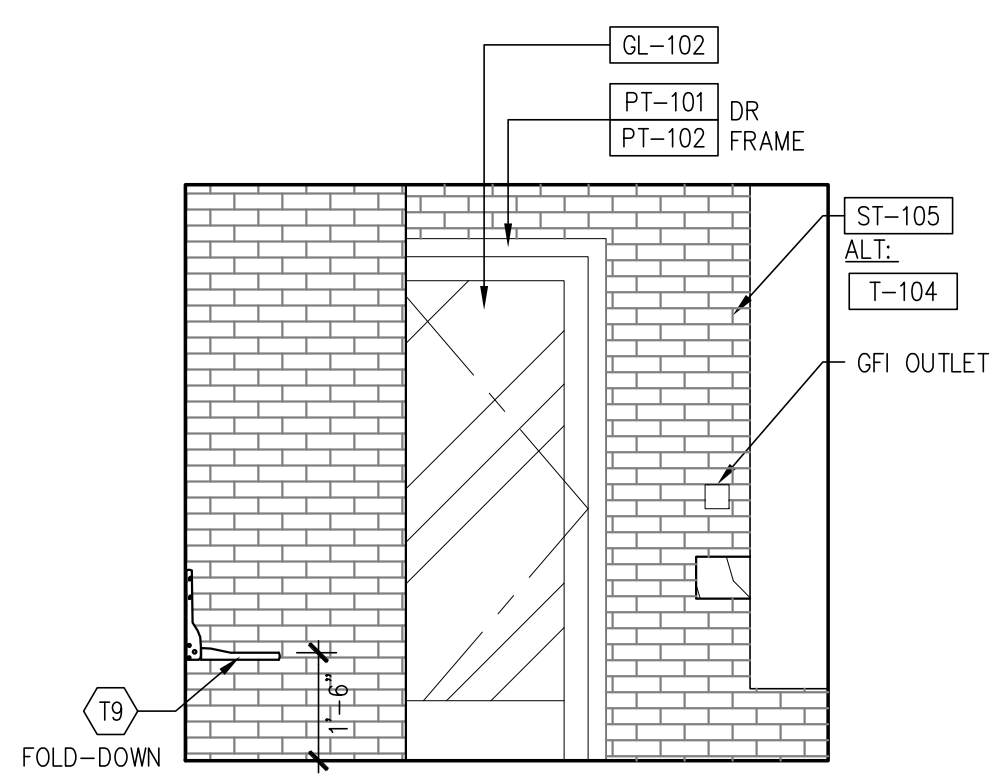
8 BATHROOM ELEVATION
3/8" = 1'-0"



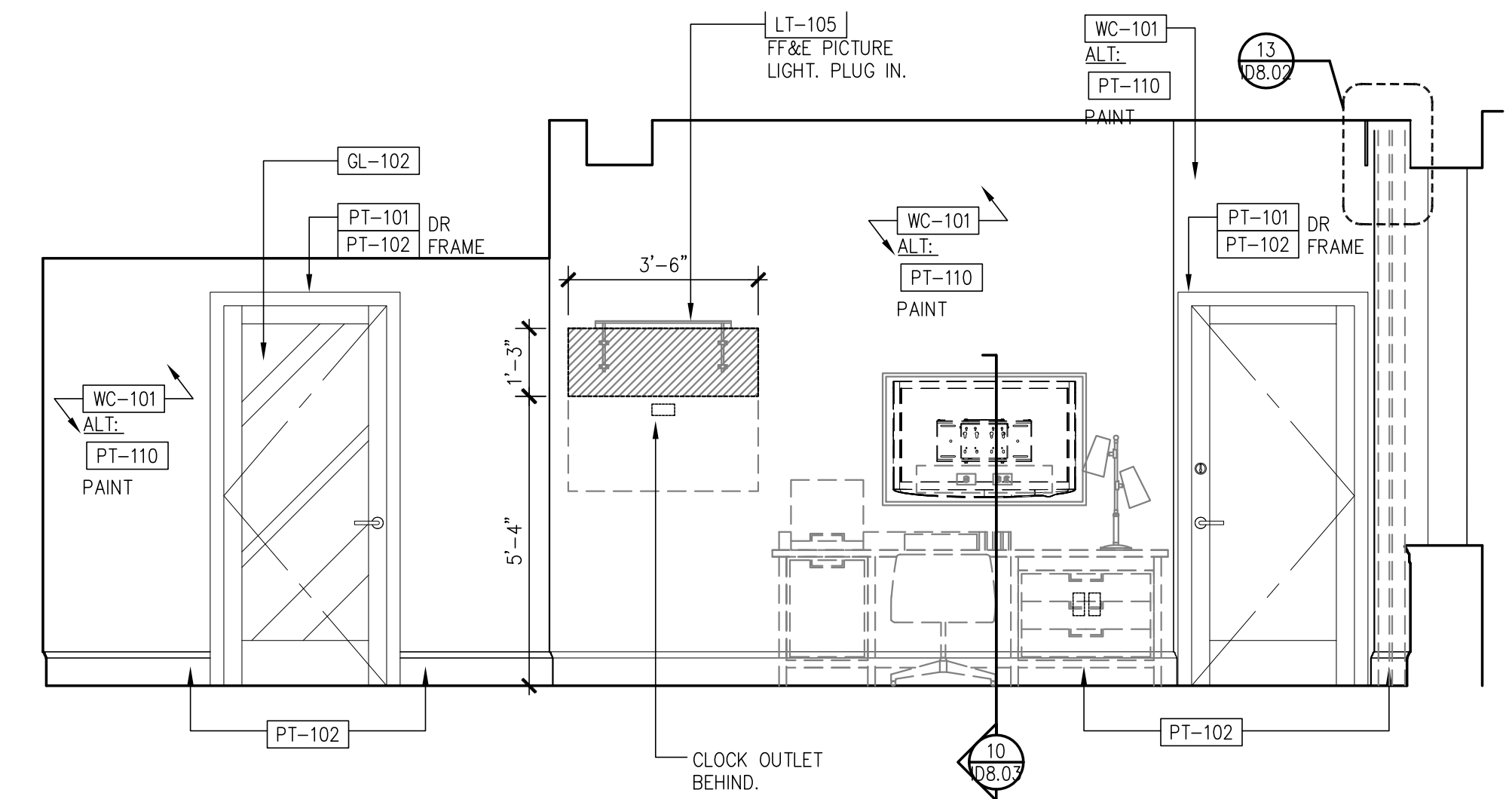
7 BATHROOM ELEVATION
3/8" = 1'-0"



6 BATHROOM ELEVATION
3/8" = 1'-0"

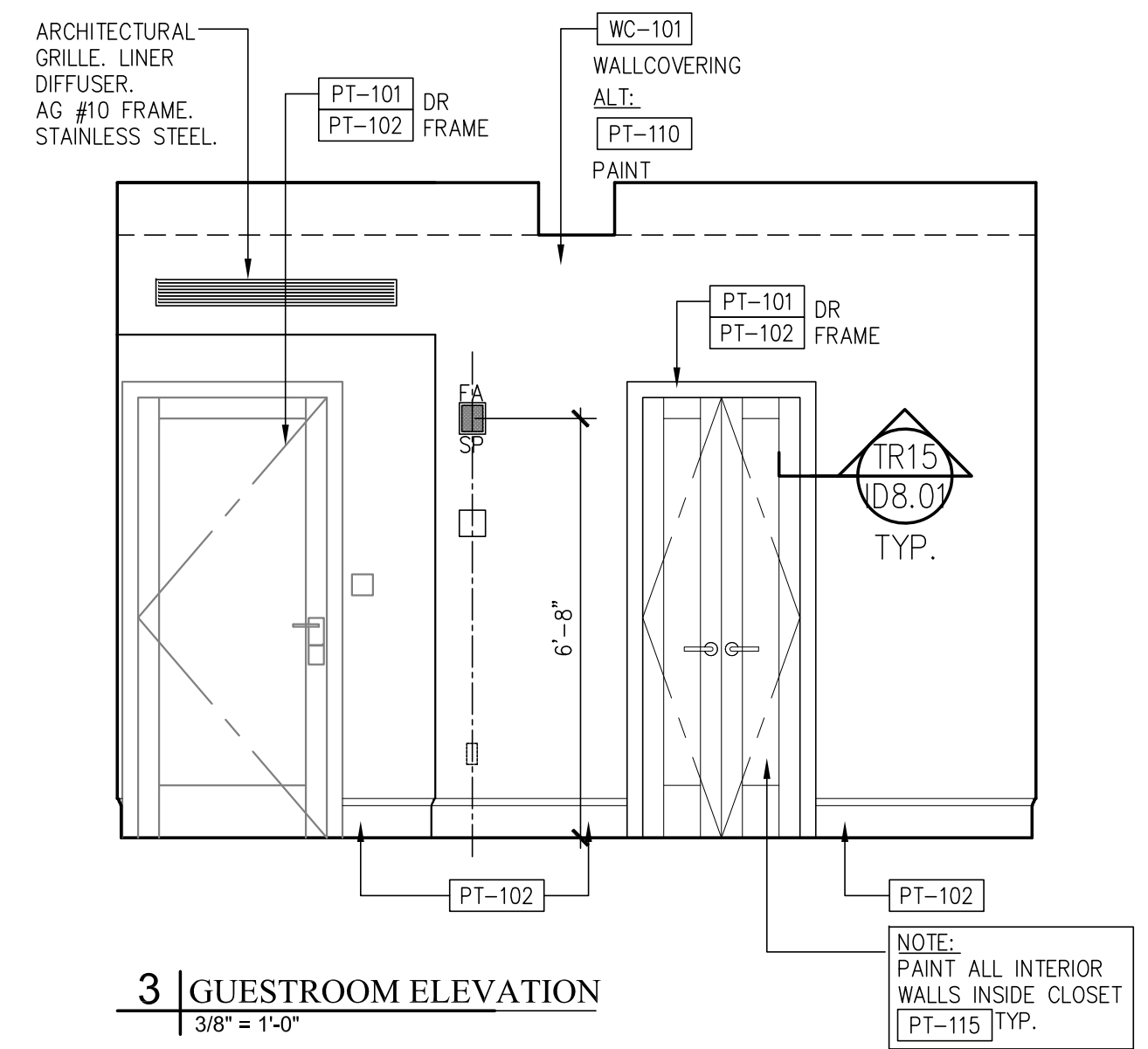


5 BATHROOM ELEVATION
3/8" = 1'-0"



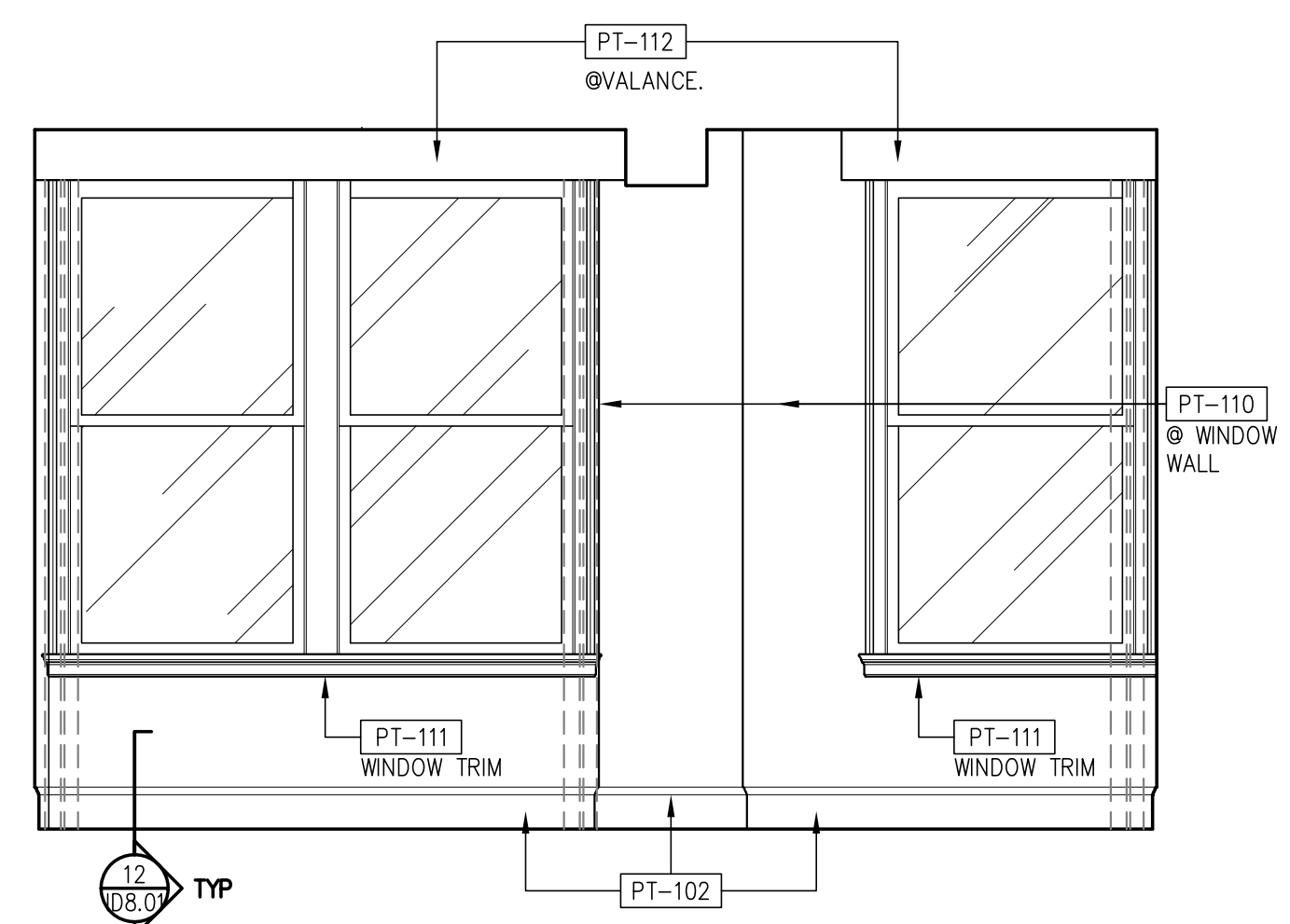
4 GUESTROOM ELEVATION
3/8" = 1'-0"

NOTE: SEE SHEET ID-8.05 FOR ADA MTG. HTS.

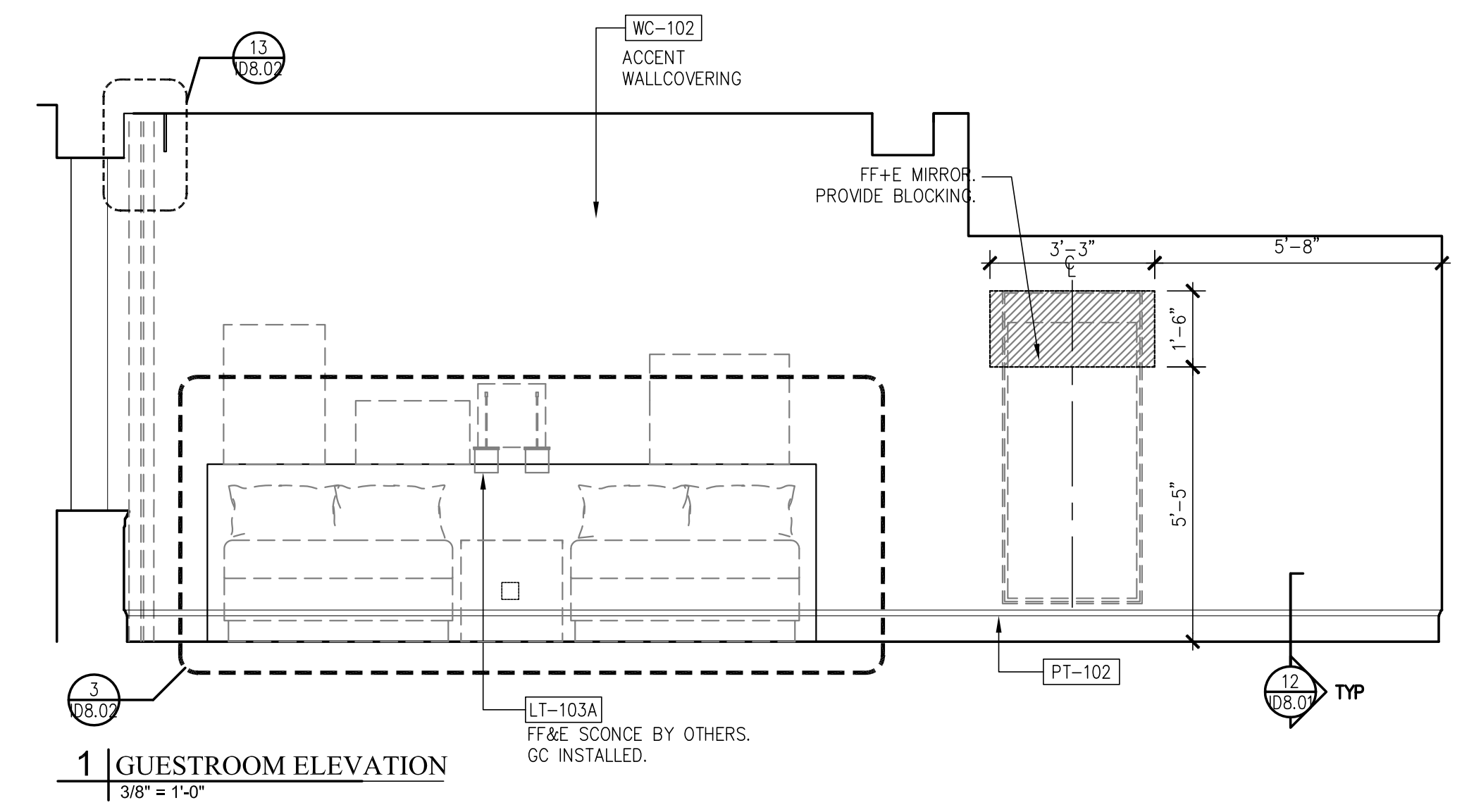


3 GUESTROOM ELEVATION
3/8" = 1'-0"

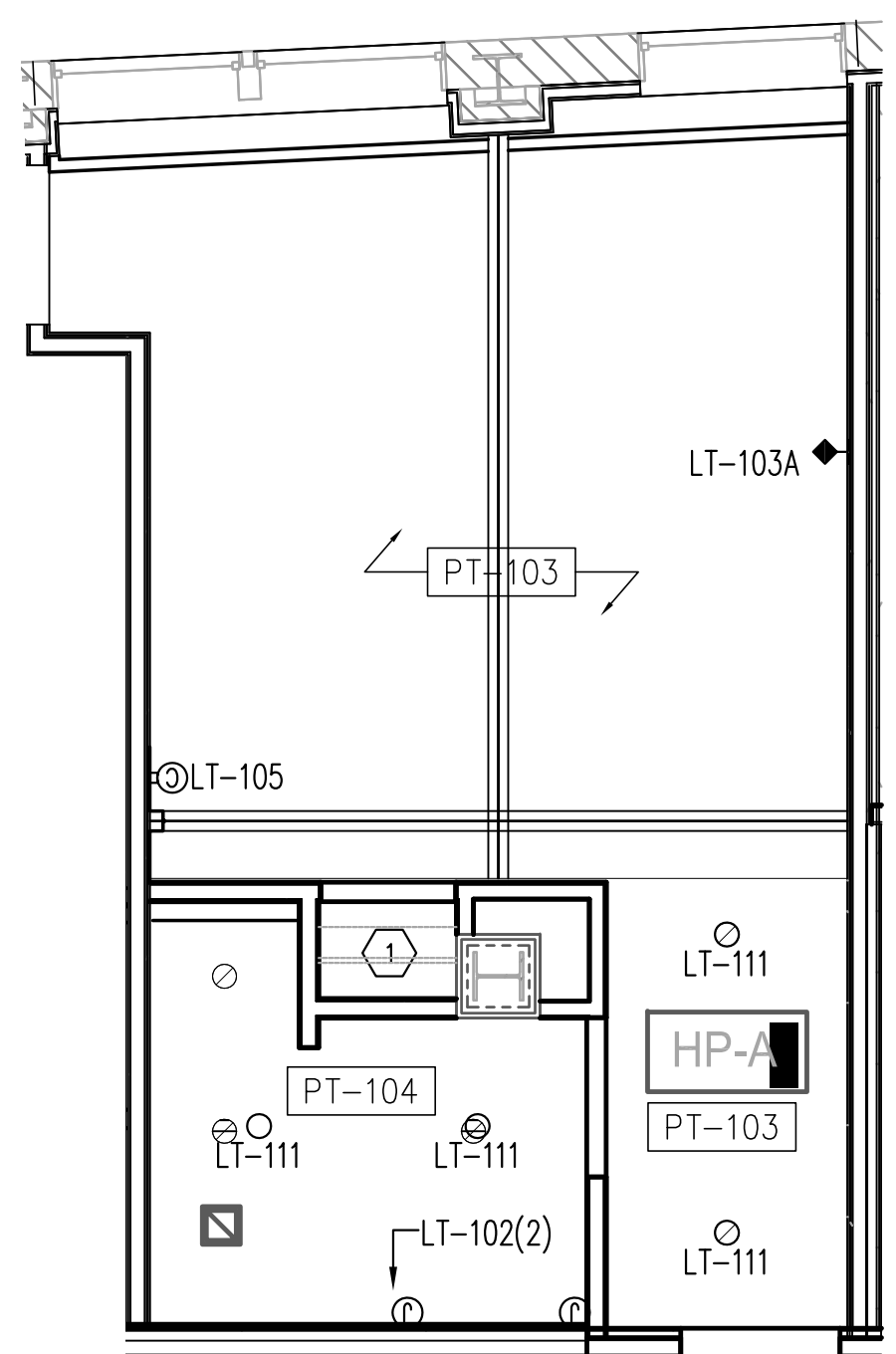
NOTE: PAINT ALL INTERIOR WALLS INSIDE CLOSET PT-115 TYP.



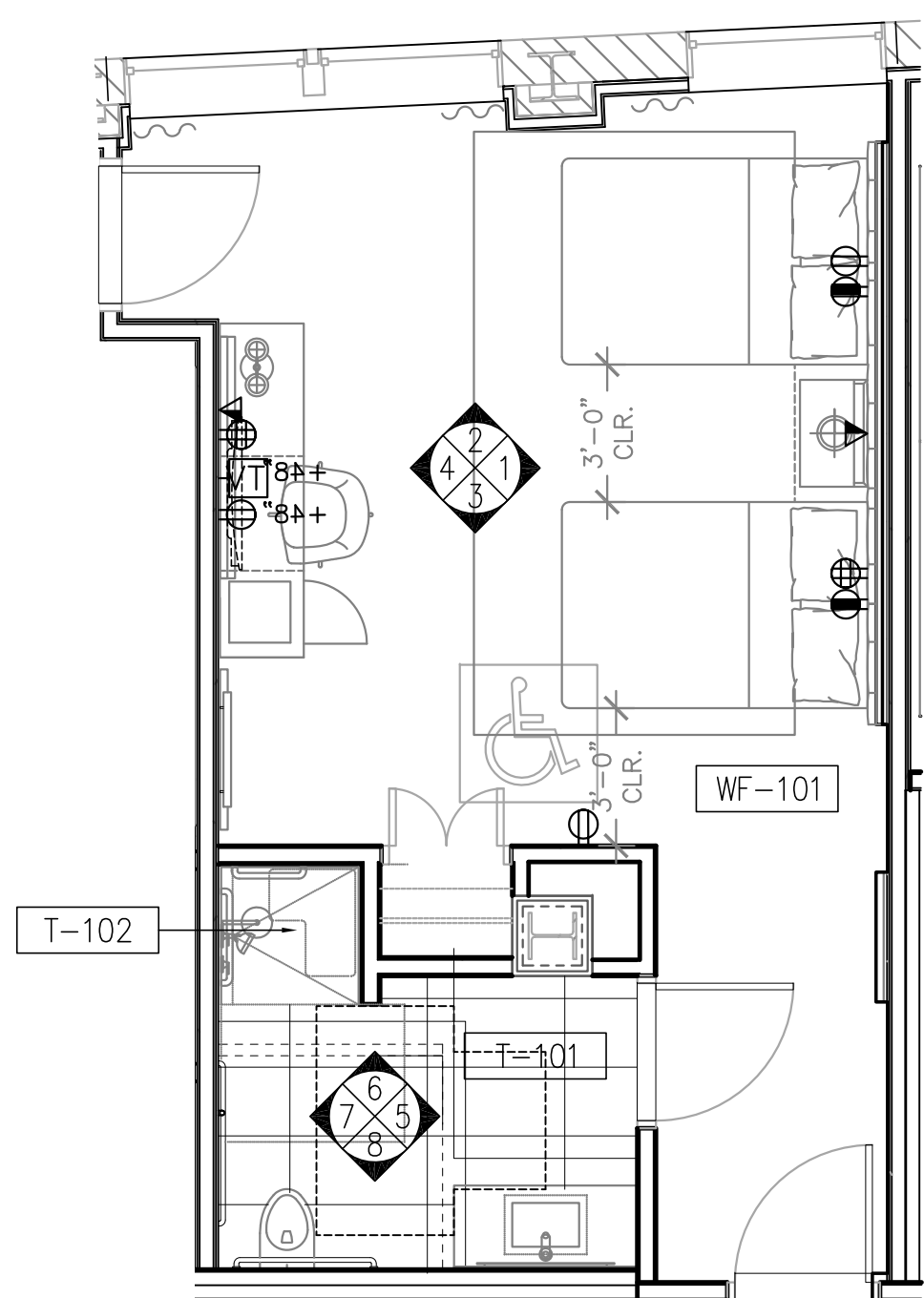
2 GUESTROOM ELEVATION
3/8" = 1'-0"



1 GUESTROOM ELEVATION
3/8" = 1'-0"



21 ROOM TYPE E-ADA REFLECTED CEILING PLAN
1/4" = 1'-0"



20 ROOM TYPE E-ADA FLOOR PLAN
1/4" = 1'-0"

Prepared For: **119 Development, LLC**
P.O. Box 7468
Portland, ME 04112

Consultant: **STONEHILL & TAYLOR ARCHITECTS AND PLANNERS**
31 W. 27th Street New York, NY 10001
(212) 226-8898 Fax (212) 941-1874

Architect: **ARCHETYPE architects**
48 Union Wharf Portland, Maine 04101
(207) 772-6022 Fax (207) 772-4056

Project: **Press Hotel**
119 Exchange St.
Portland, ME 04101

Revisions:	Date:	Scale:
1	03-07-01	30% Marriott Submission
2	03-09-09	60% Marriott Sub. & Pric.
3	13-10-14	Issue for Bid & Marriott Rev.

Date: **06 SEPT, 2013**

RM TYPE E-ADA PLANS & ELEVATIONS

ID-7.16