

Prepared For: **119 Development, LLC**  
 P.O. Box 7468  
 Portland, ME 04112

Consultant: **STONEHILL & TAYLOR ARCHITECTS AND PLANNERS**  
 31 W. 27th Street New York, NY 10001  
 (212) 226-8898 Fax (212) 941-1874

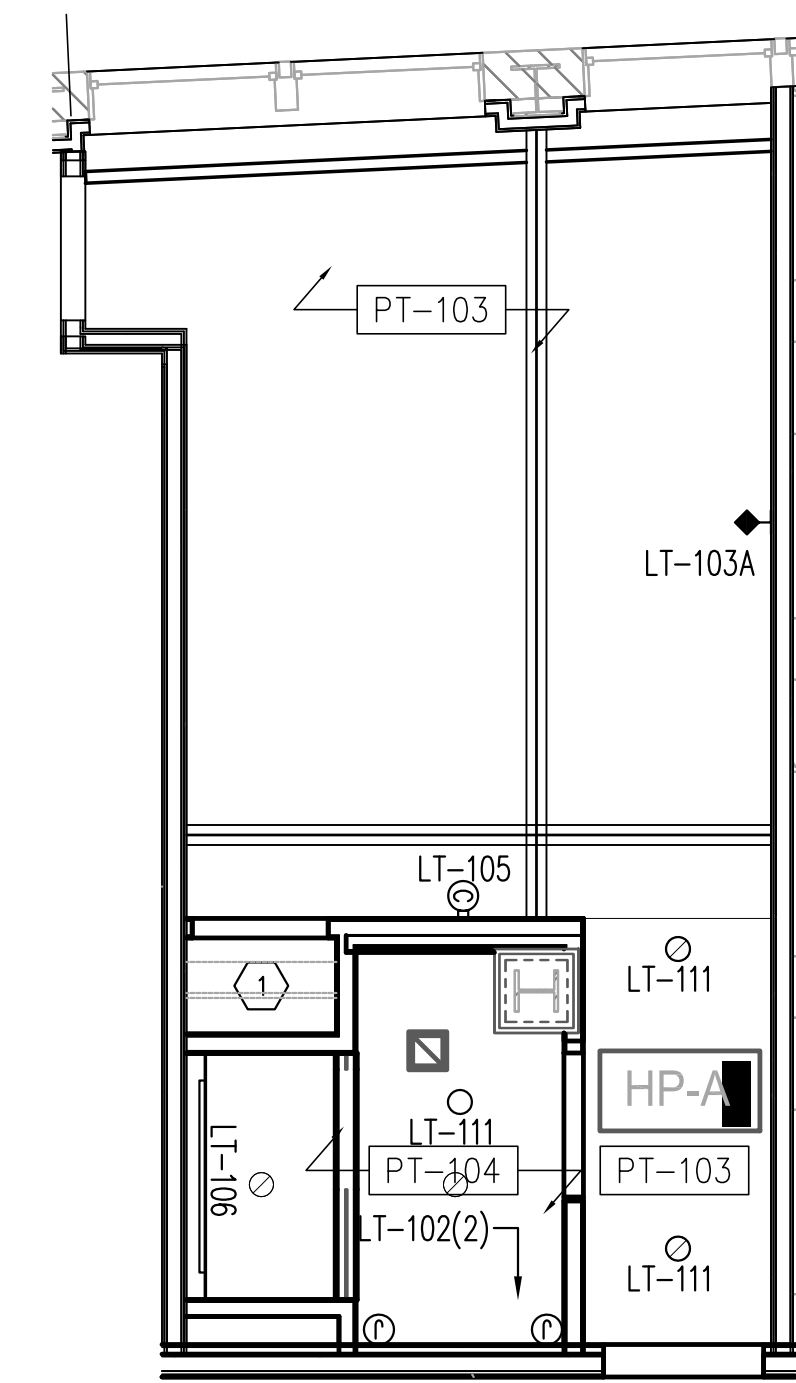
Architect: **ARCHETYPE architects**  
 48 Union Wharf Portland, Maine 04101  
 (207) 772-6022 Fax (207) 772-4056

Project: **Press Hotel**  
 119 Exchange St.  
 Portland, ME 04101

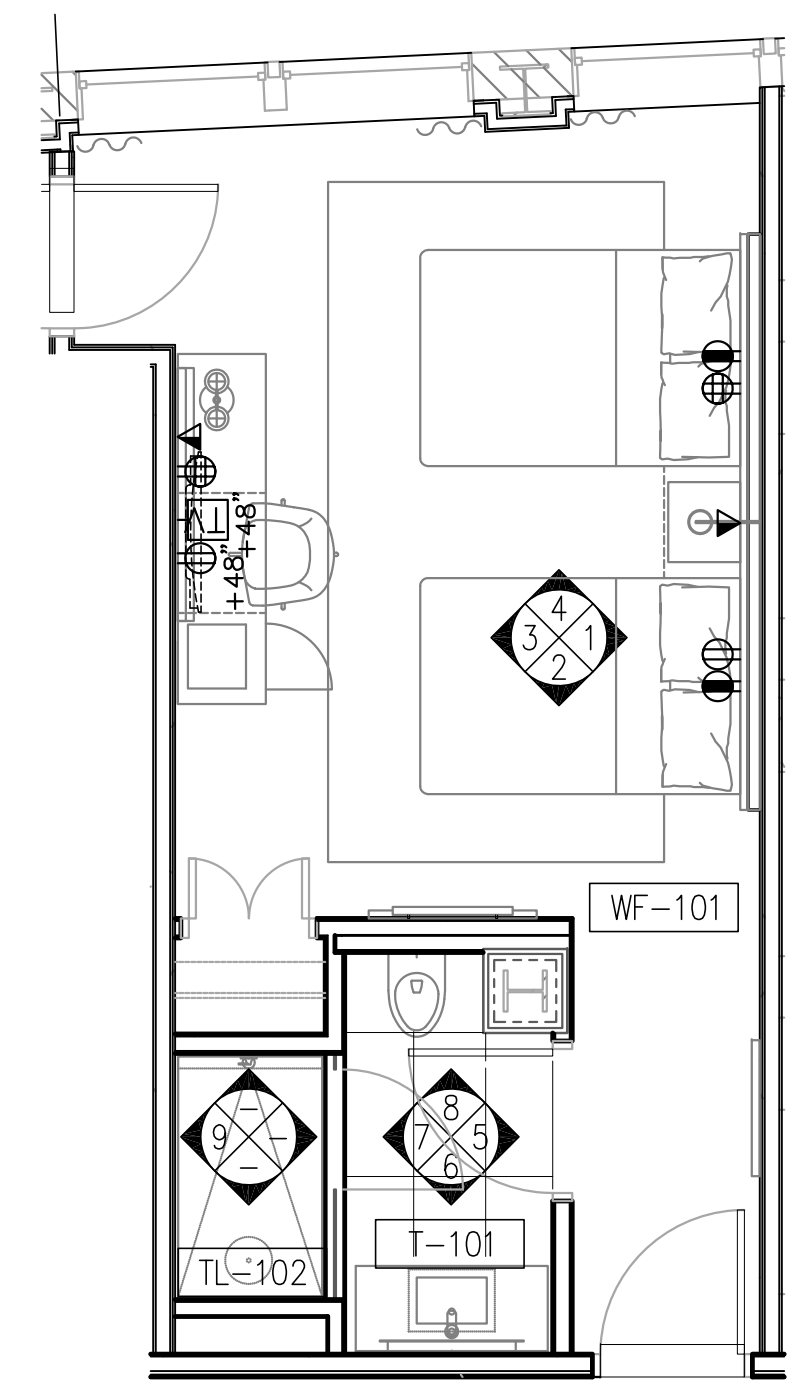
Revisions:	Date:	Scale:
1	03-07-01	30% Marriott Submission
2	03-09-09	60% Marriott Sub. & Pric.
3	13-10-14	Issue for Bid & Marriott Rev.

Date: **06 SEPT, 2013**  
 Scale: **RM TYPE E PLANS & ELEVATIONS**

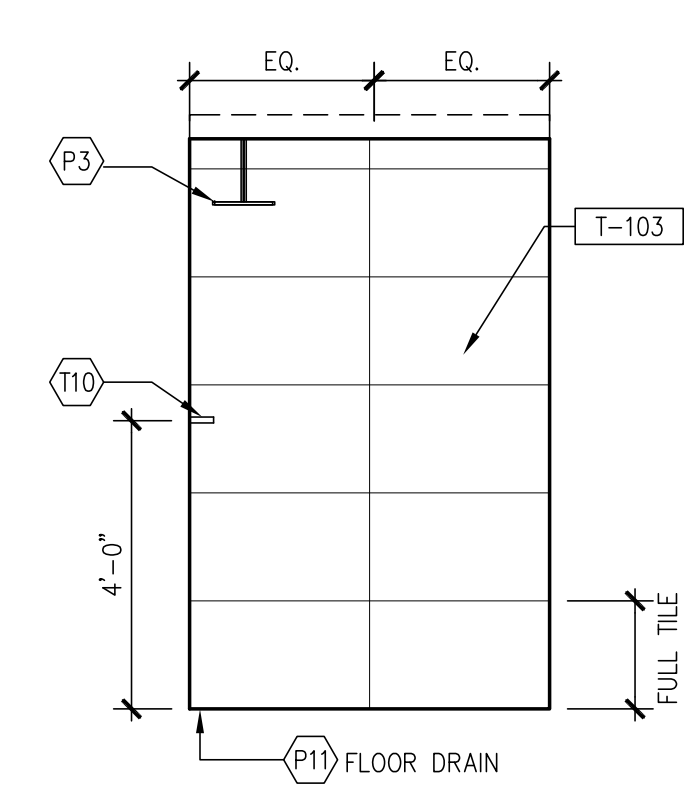
**ID-7.15**



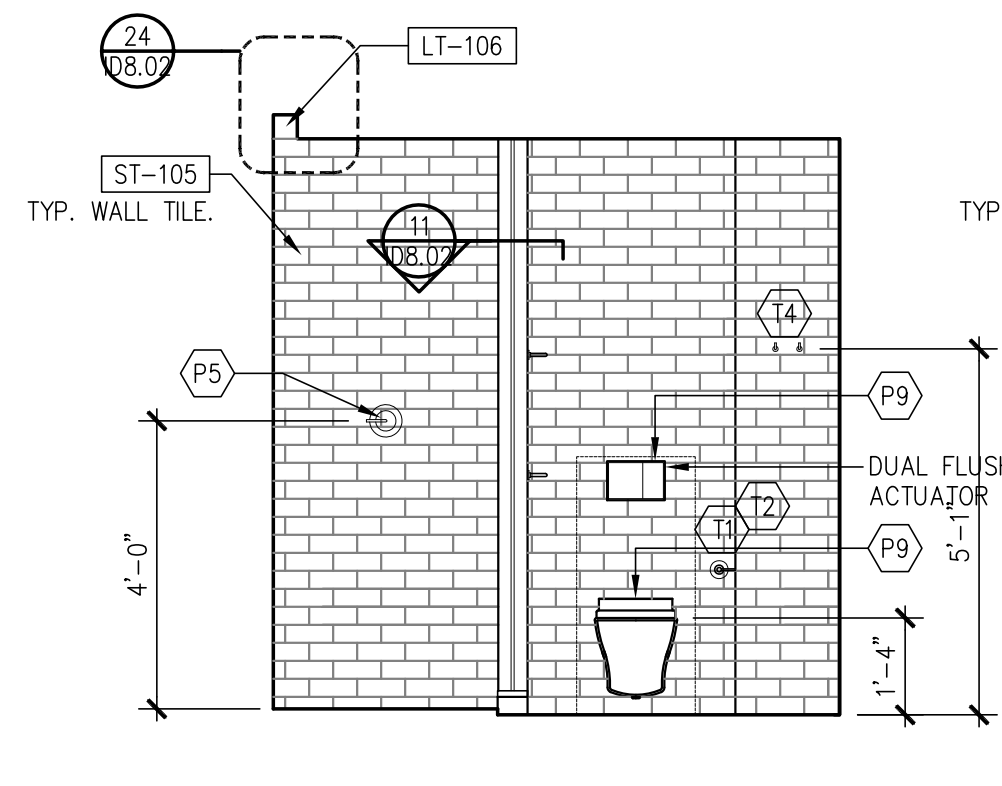
21 ROOM TYPE E REFLECTED CEILING PLAN  
 1/4" = 1'-0"



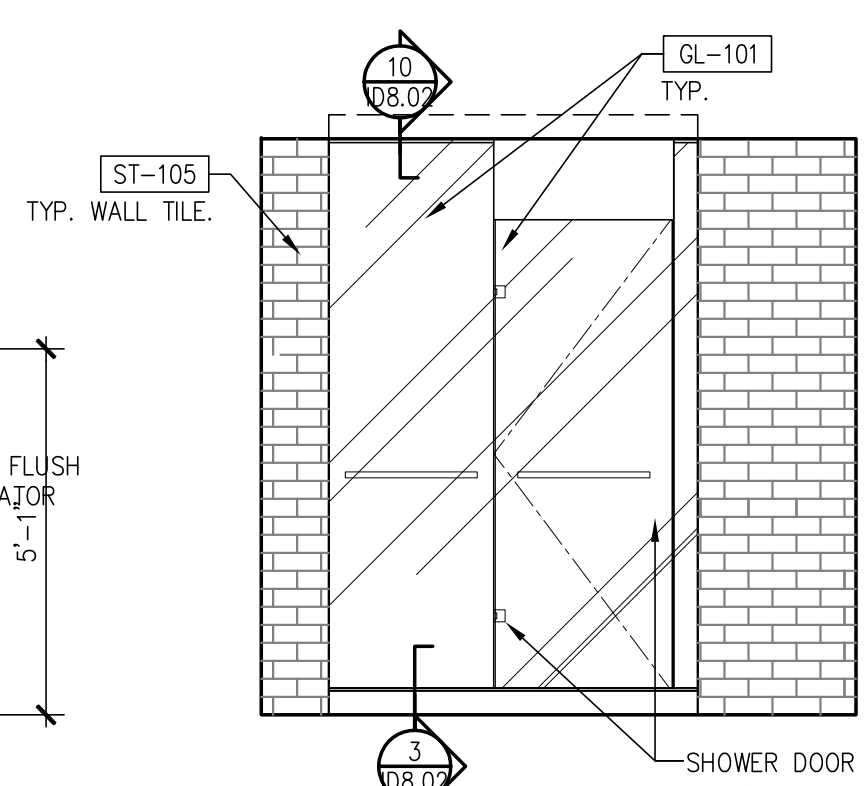
20 ROOM TYPE E FLOOR PLAN  
 1/4" = 1'-0"



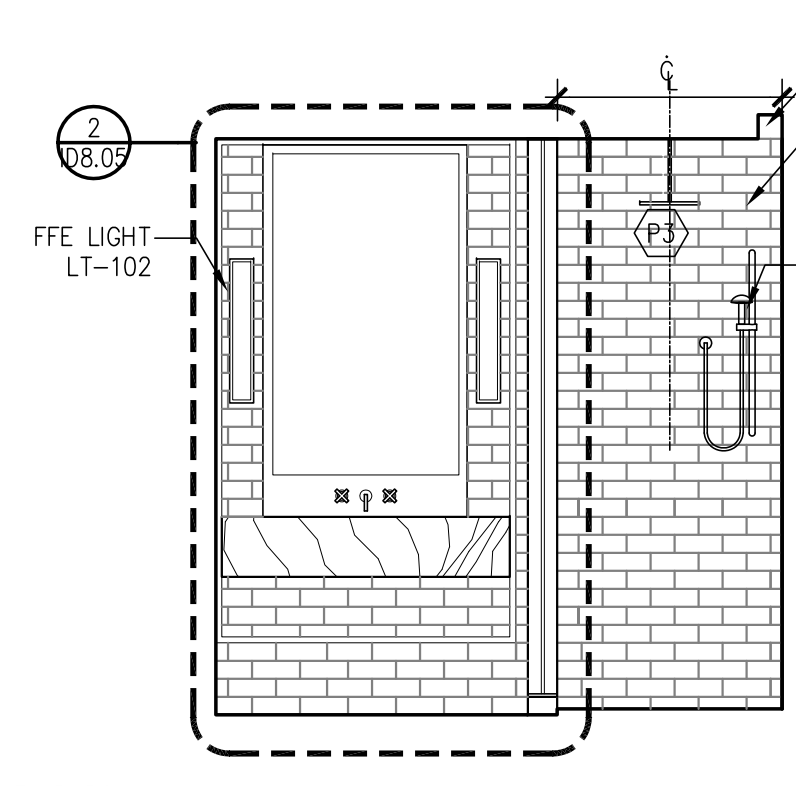
9 BATHROOM ELEVATION  
 3/8" = 1'-0"



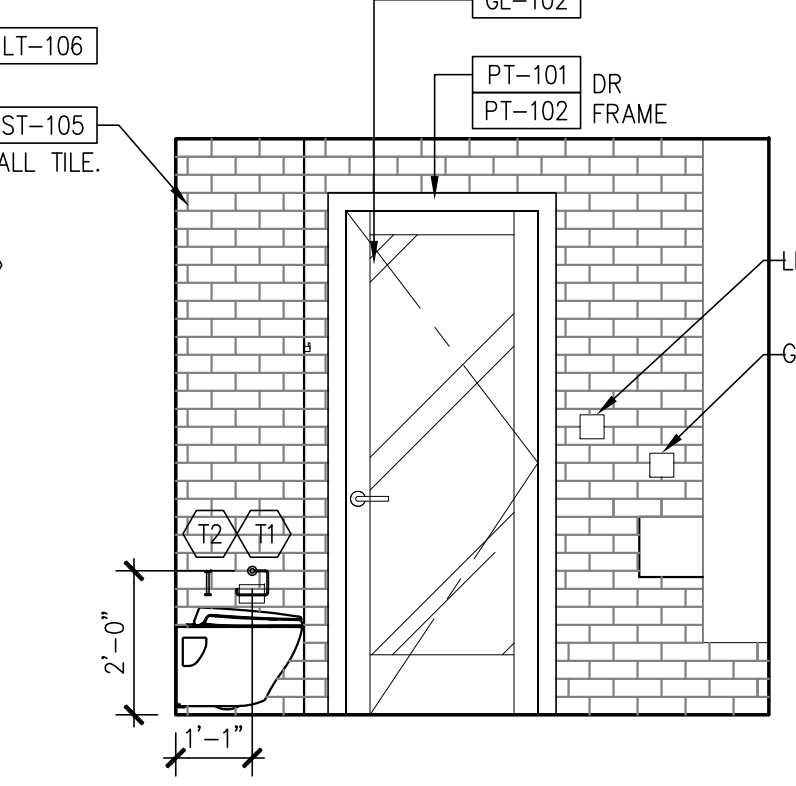
8 BATHROOM ELEVATION  
 3/8" = 1'-0"



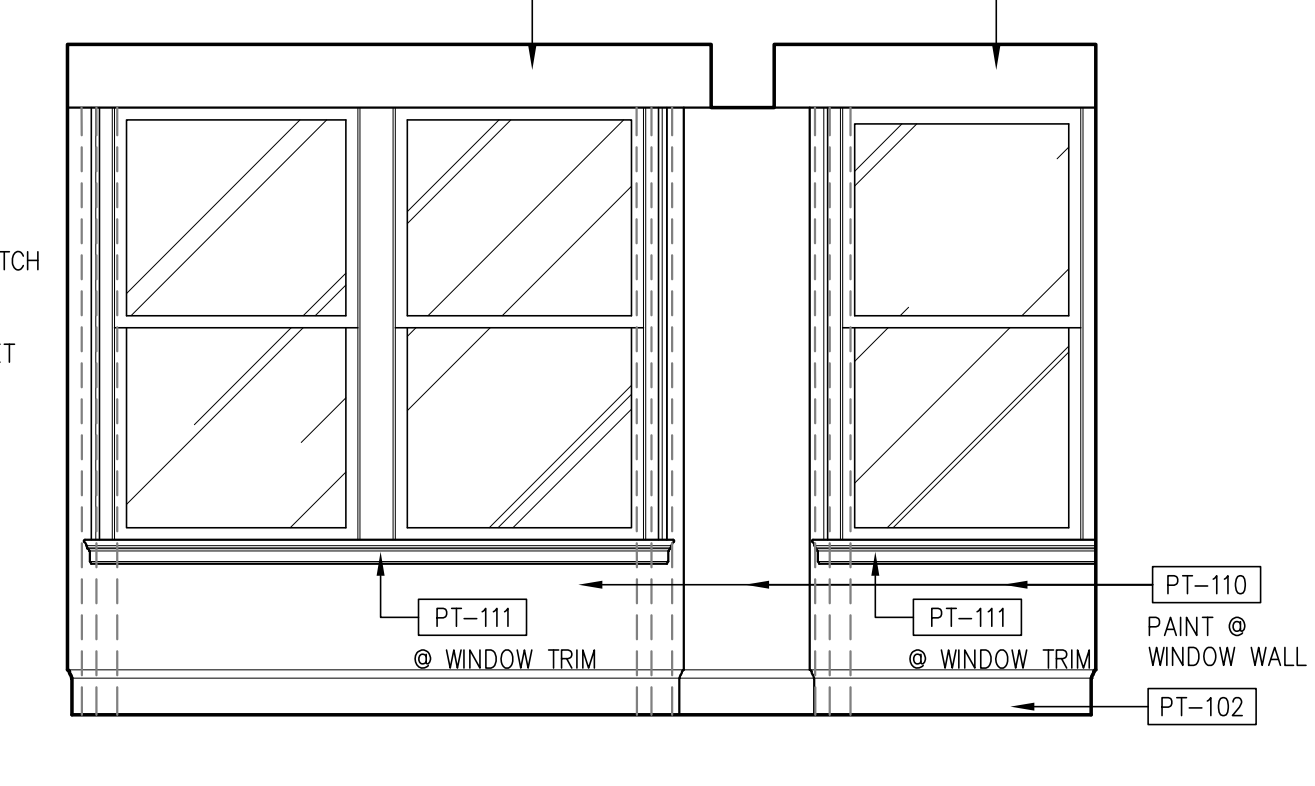
7 BATHROOM ELEVATION  
 3/8" = 1'-0"



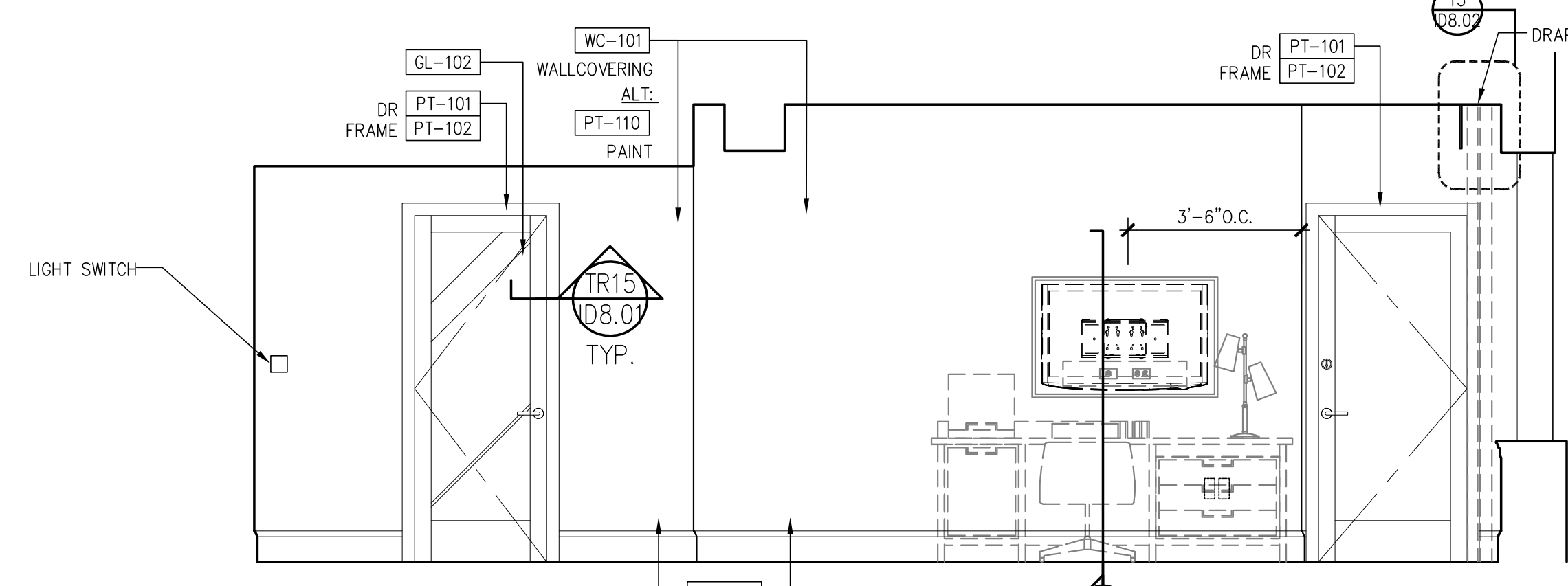
6 BATHROOM ELEVATION  
 3/8" = 1'-0"



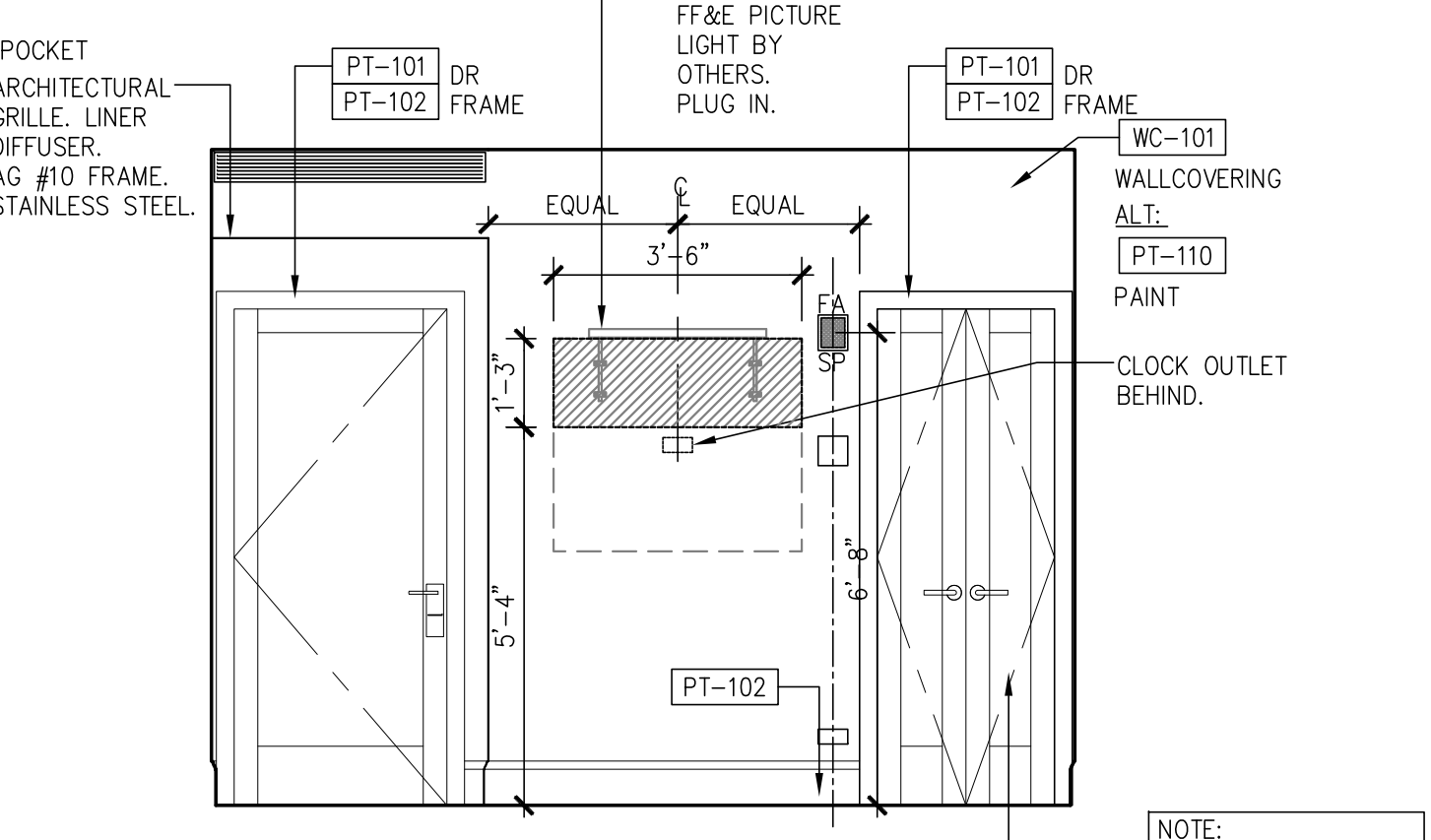
5 BATHROOM ELEVATION  
 3/8" = 1'-0"



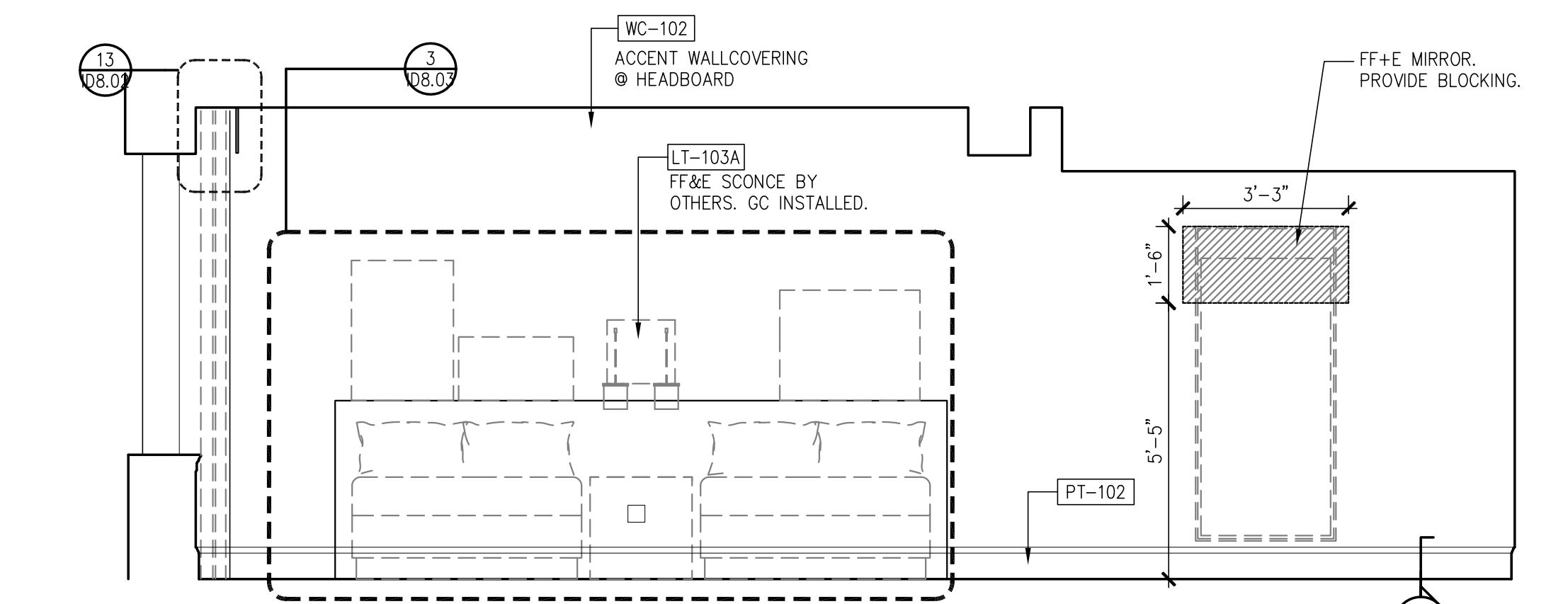
4 BEDROOM ELEVATION  
 3/8" = 1'-0"



3 BEDROOM ELEVATION  
 3/8" = 1'-0"



2 BEDROOM ELEVATION  
 3/8" = 1'-0"



1 BEDROOM ELEVATION  
 3/8" = 1'-0"

NOTE: PAINT ALL INTERIOR WALLS INSIDE CLOSET [PT-115] TYP.