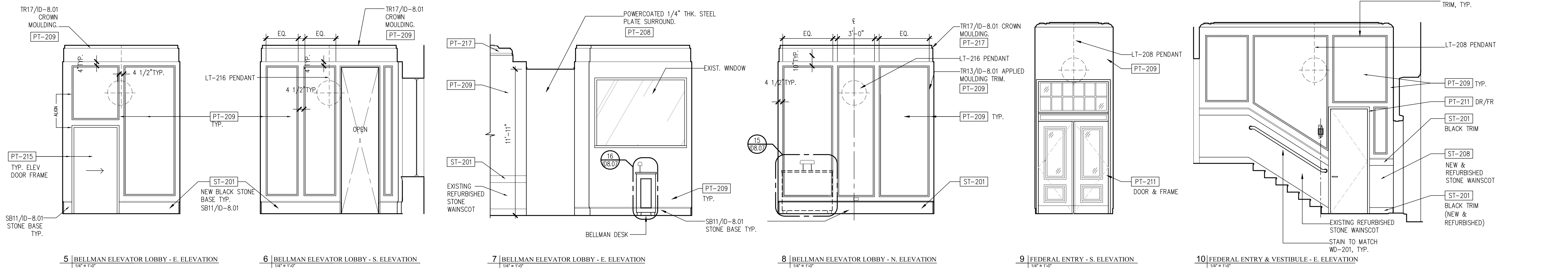


1 EXCHANGE ENTRY - E. ELEVATION
1/4" = 1'-0"

2 EXCHANGE ENTRY - S. ELEVATION
1/4" = 1'-0"

3 EXCHANGE ENTRY - W. ELEVATION
1/4" = 1'-0"

4 EXCHANGE ENTRY - N. ELEVATION
1/4" = 1'-0"



5 BELLMAN ELEVATOR LOBBY - E. ELEVATION
1/4" = 1'-0"

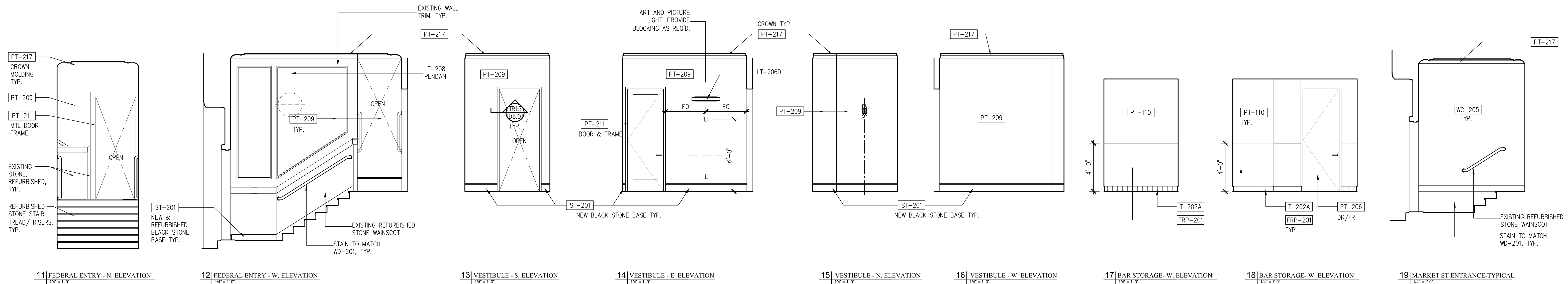
6 BELLMAN ELEVATOR LOBBY - S. ELEVATION
1/4" = 1'-0"

7 BELLMAN ELEVATOR LOBBY - E. ELEVATION
1/4" = 1'-0"

8 BELLMAN ELEVATOR LOBBY - N. ELEVATION
1/4" = 1'-0"

9 FEDERAL ENTRY - S. ELEVATION
1/4" = 1'-0"

10 FEDERAL ENTRY & VESTIBULE - E. ELEVATION
1/4" = 1'-0"



11 FEDERAL ENTRY - N. ELEVATION
1/4" = 1'-0"

12 FEDERAL ENTRY - W. ELEVATION
1/4" = 1'-0"

13 VESTIBULE - S. ELEVATION
1/4" = 1'-0"

14 VESTIBULE - E. ELEVATION
1/4" = 1'-0"

15 VESTIBULE - N. ELEVATION
1/4" = 1'-0"

16 VESTIBULE - W. ELEVATION
1/4" = 1'-0"

17 BAR STORAGE - W. ELEVATION
1/4" = 1'-0"

18 BAR STORAGE - W. ELEVATION
1/4" = 1'-0"

19 MARKET ST ENTRANCE-TYPICAL
1/4" = 1'-0"

Prepared For:
119 Development, LLC
P.O. Box 7468
Portland, ME 04112

Consultant:
STONEHILL & TAYLOR ARCHITECTS AND PLANNERS
31 W. 27th Street
New York, NY 10001
(212) 226-8898 Fax (212) 941-1874

Architect:
ARCHITYPE Architects
48 Union Wharf
Portland, Maine 04101
(207) 772-6022 Fax (207) 772-4056

Project:
Press Hotel
119 Exchange St.
Portland, ME 04101

Revisions:

1	13-07-01	30% Marriott Submission
2	13-09-05	60% Marriott Sub. & Price Issue for Bid & Marriott Review
3	13-10-11	Issue for Bid & Marriott Review

Date: 06 SEPT, 2013
Scale: 1/4" = 1'-0"
LOBBY ENTRY ELEVATIONS

ID-7.06