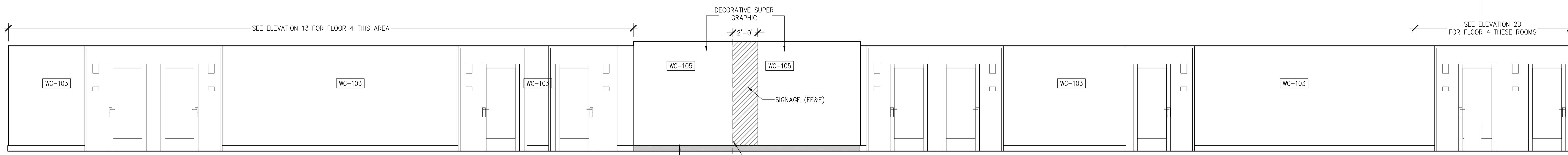
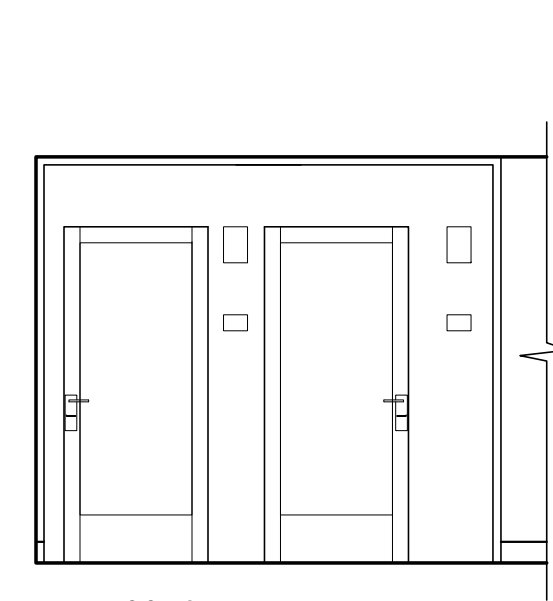


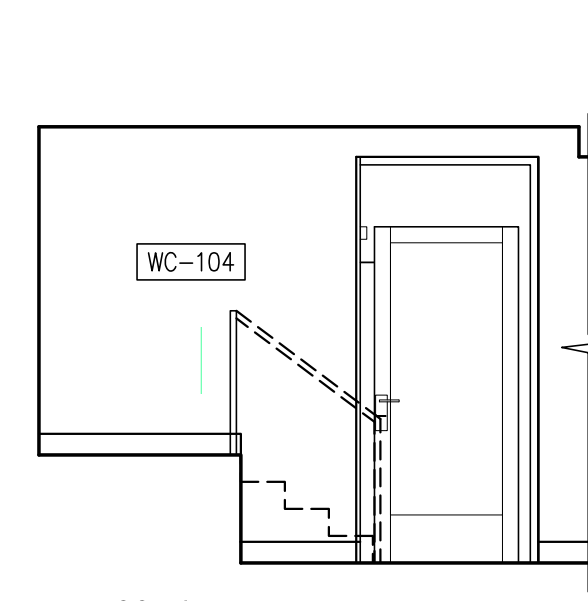
FLOORS 2-5
1 CORRIDOR - E. ELEVATION
1/4" = 1'-0"



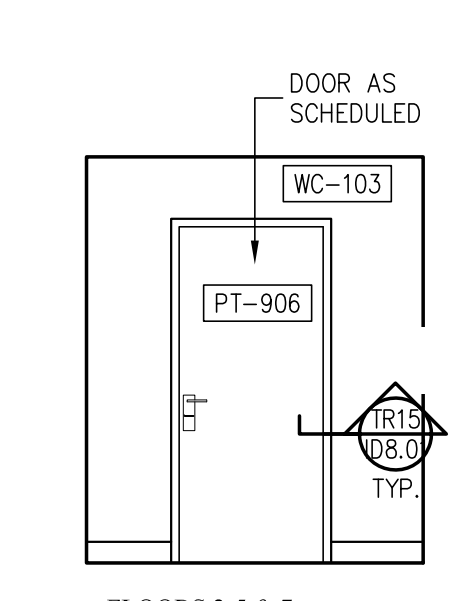
FLOORS 2-5
2 CORRIDOR - W. ELEVATION
1/4" = 1'-0"



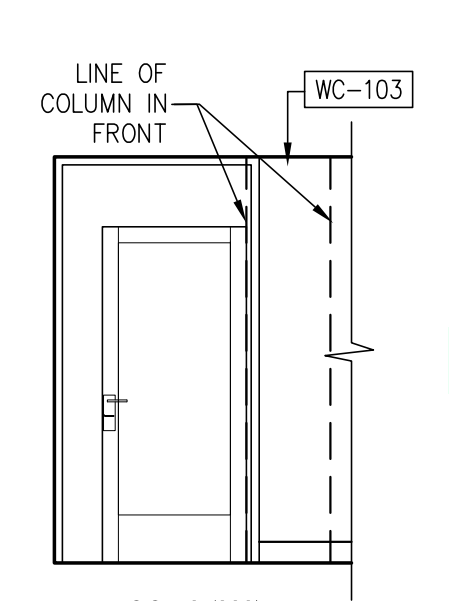
FLOOR 2
1A CORRIDOR - E. ELEVATION
1/4" = 1'-0"



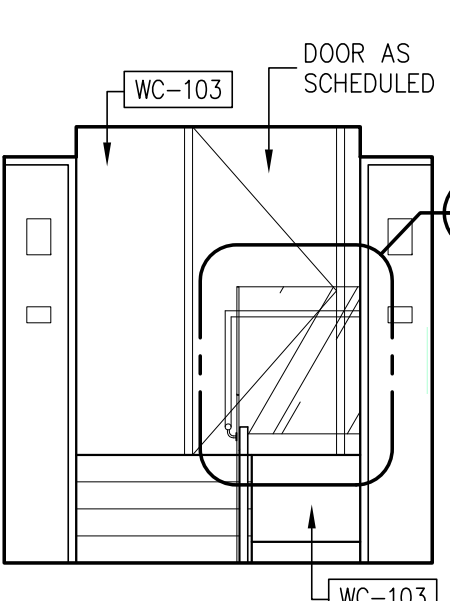
FLOOR 6
1B CORRIDOR - E. ELEVATION
1/4" = 1'-0"



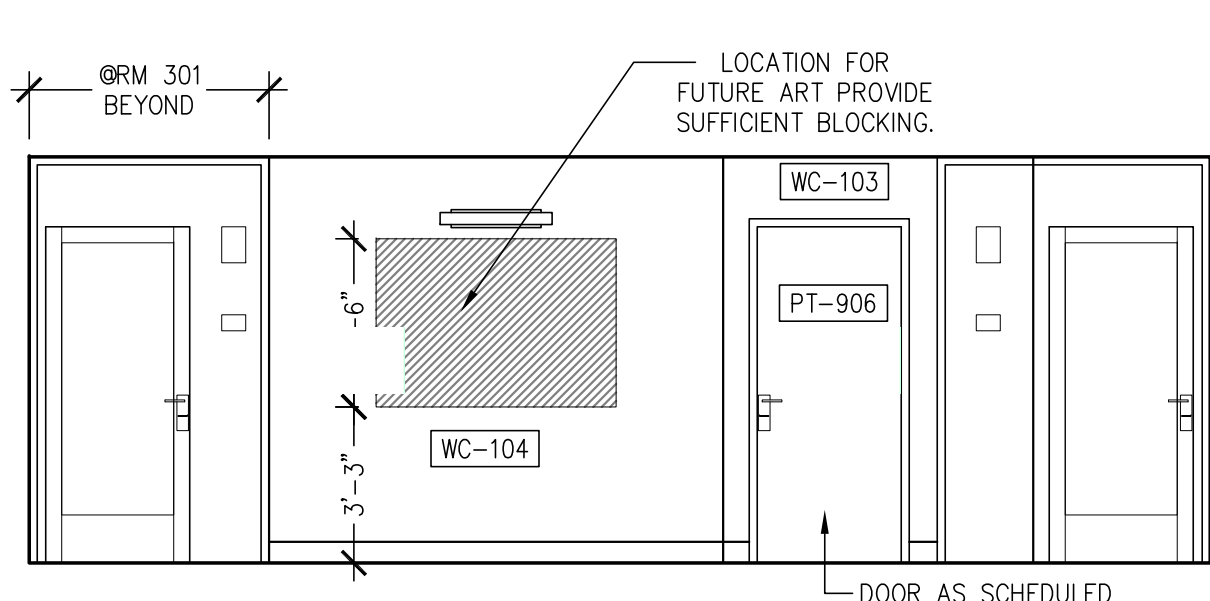
FLOORS 2-5 & 7
3 CORRIDOR - N. ELEVATION
1/4" = 1'-0"



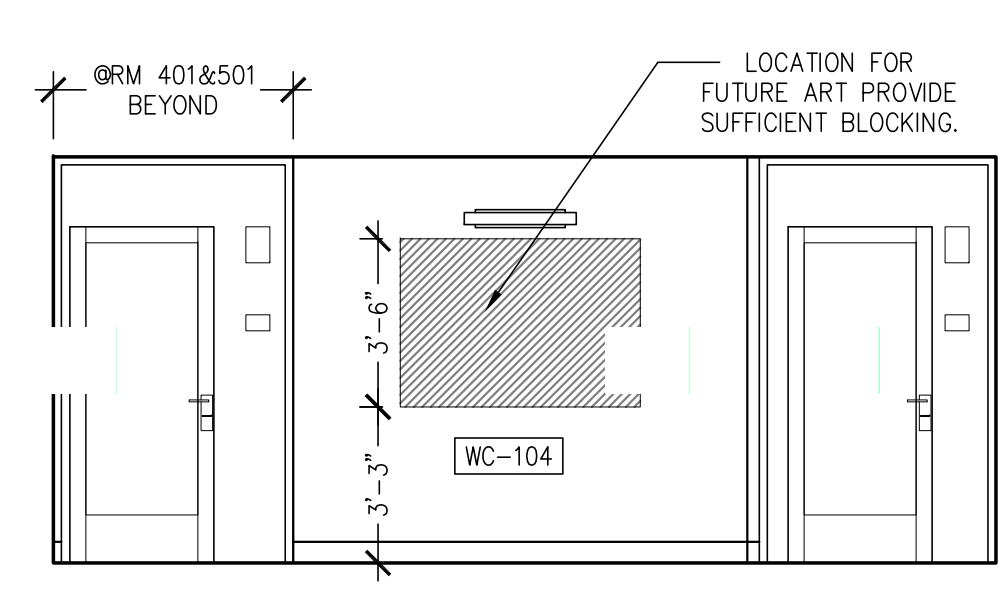
FLOOR 2 (222)
3A CORRIDOR - N. ELEVATION
1/4" = 1'-0"



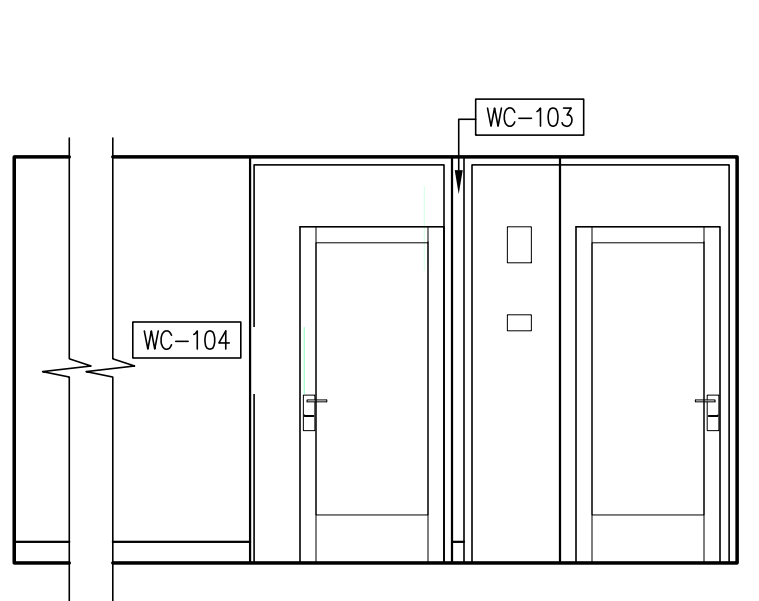
FLOOR 6
3B CORRIDOR - N. ELEVATION
1/4" = 1'-0"



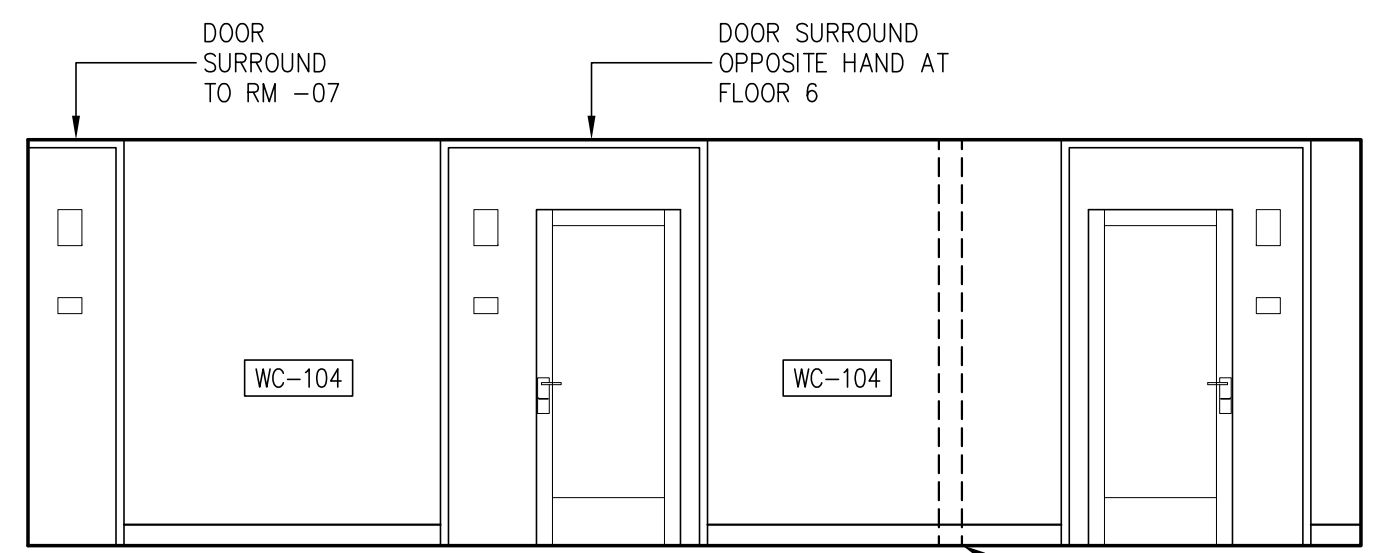
FLOORS 2&3
4A CORRIDOR - S. ELEVATION
1/4" = 1'-0"



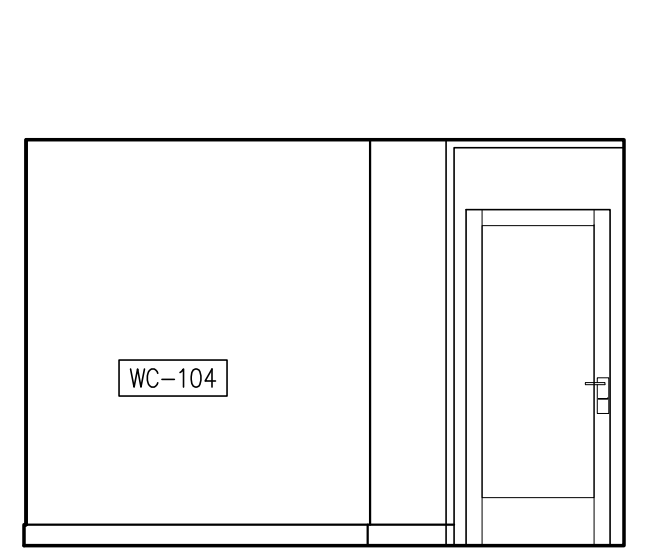
FLOORS 4&5
4B CORRIDOR - S. ELEVATION
1/4" = 1'-0"



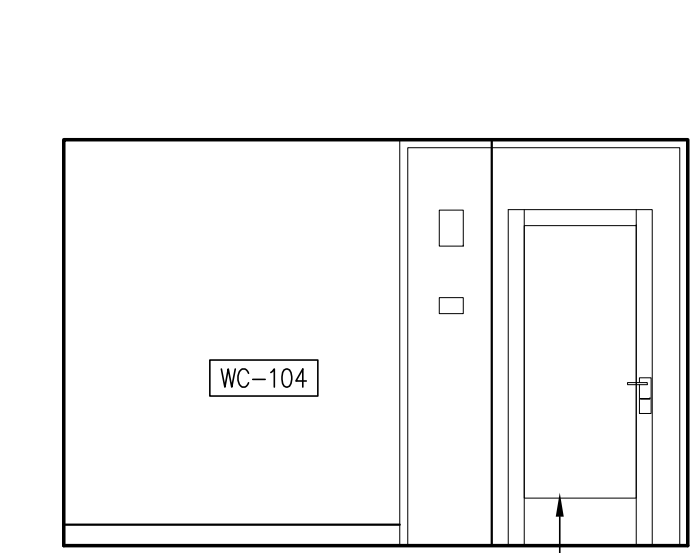
FLOORS 6&7
4C CORRIDOR - S. ELEVATION
1/4" = 1'-0"



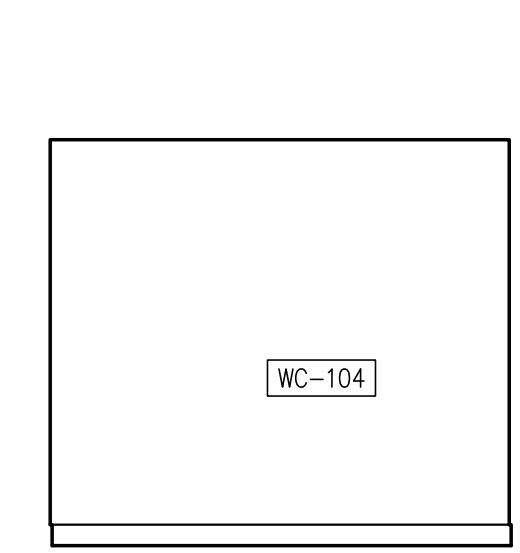
FLOORS 2-6
5 CORRIDOR - E. ELEVATION
1/4" = 1'-0"



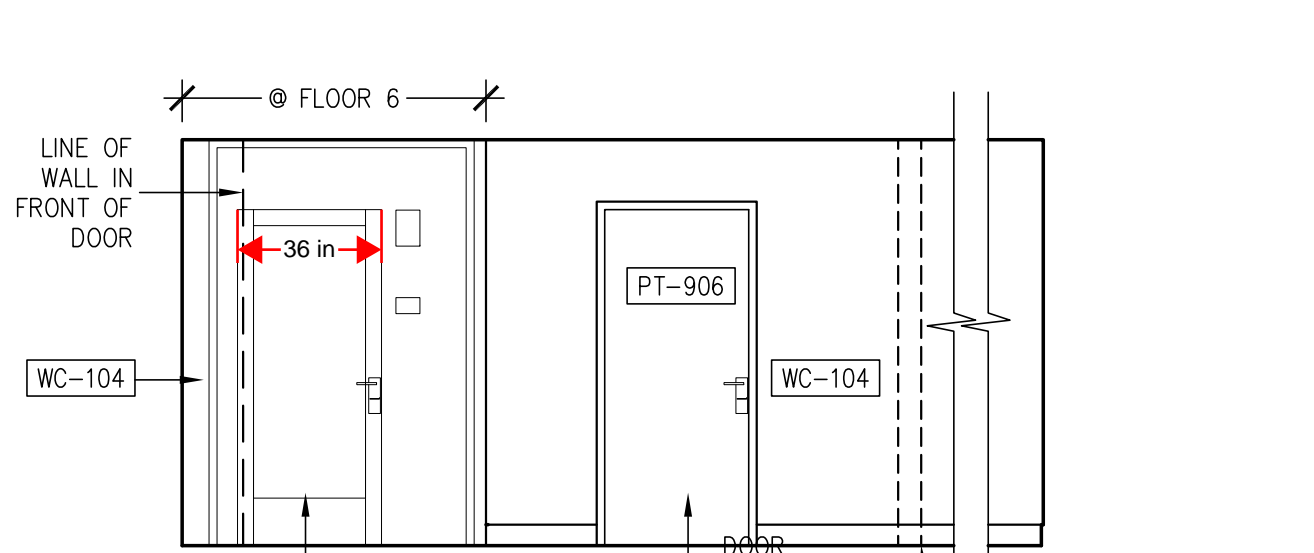
FLOORS 2-5
6A CORRIDOR - N. ELEVATION
1/4" = 1'-0"



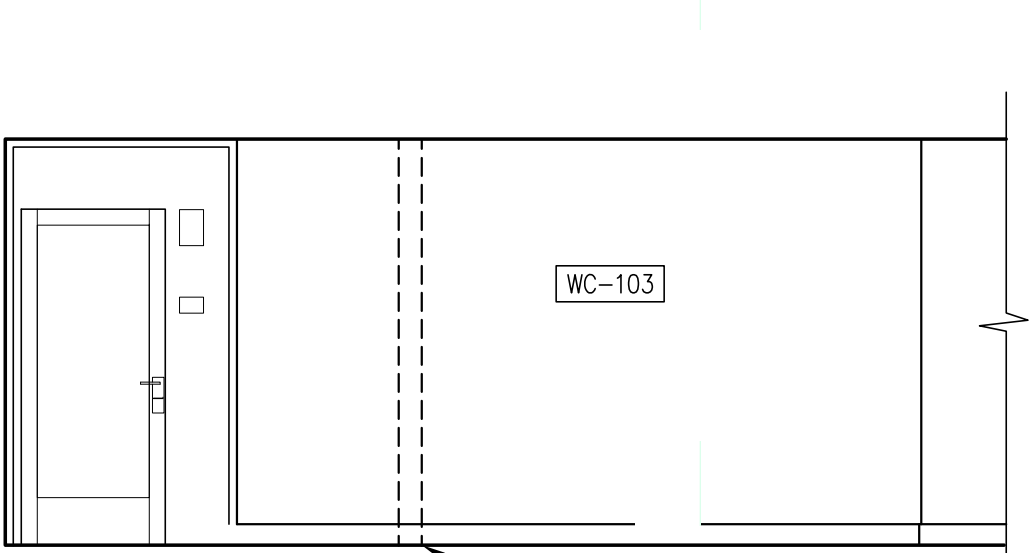
FLOOR 6
6B CORRIDOR - N. ELEVATION
1/4" = 1'-0"



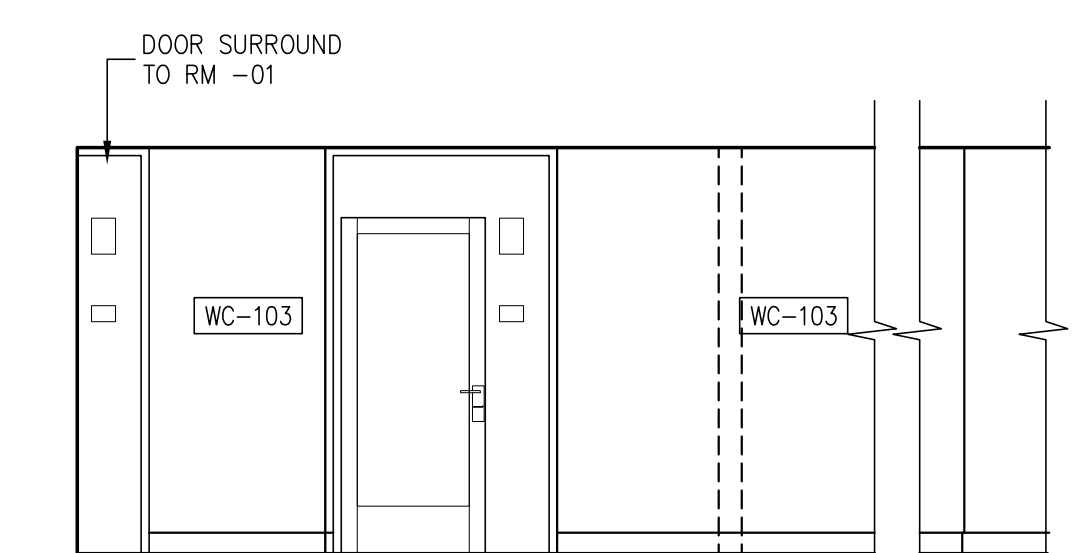
FLOORS 2-5
7 CORRIDOR - S. ELEVATION
1/4" = 1'-0"



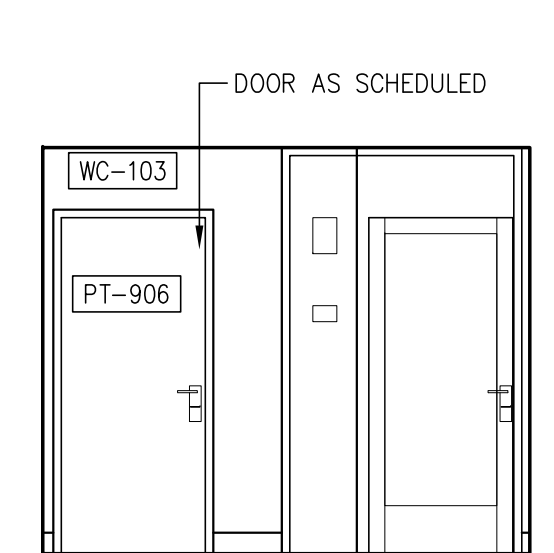
FLOORS 2-6
8 CORRIDOR - E. ELEVATION
1/4" = 1'-0"



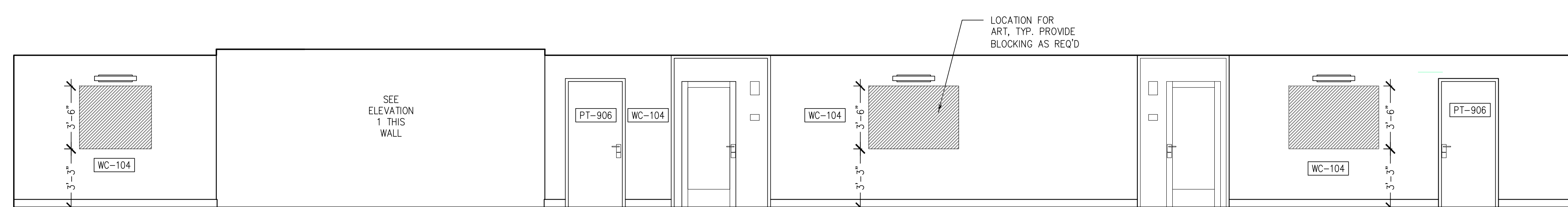
FLOORS 2-5
9A CORRIDOR - W. ELEVATION
1/4" = 1'-0"



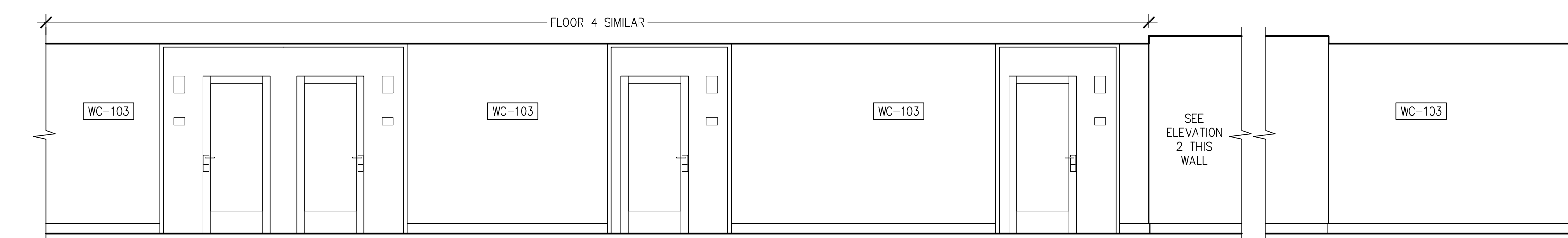
FLOORS 6&7
9B CORRIDOR - W. ELEVATION
1/4" = 1'-0"



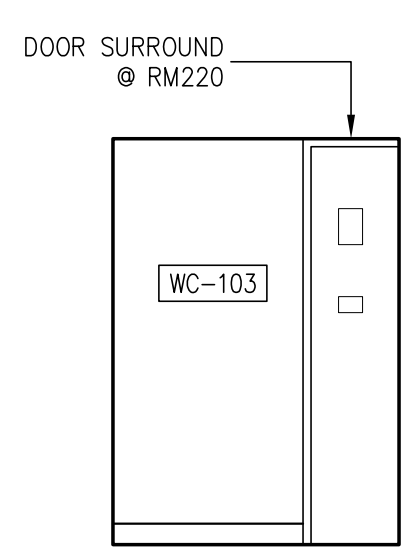
FLOORS 4&5
10 CORRIDOR - S. ELEVATION
1/4" = 1'-0"



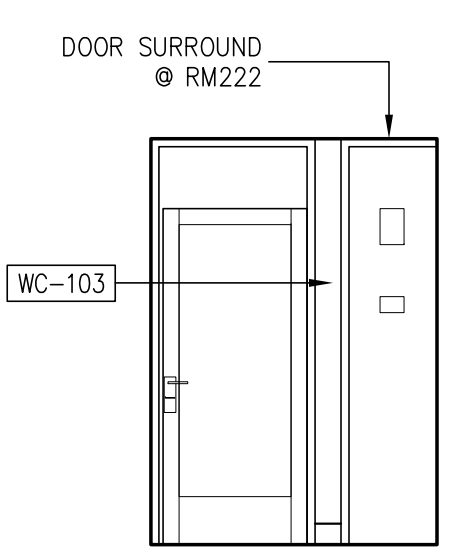
FLOOR 7
12 CORRIDOR - E. ELEVATION
1/4" = 1'-0"



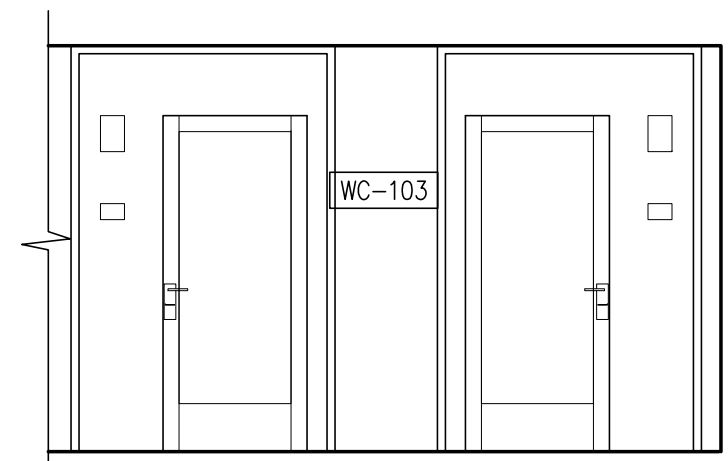
FLOOR 7
13 CORRIDOR - W. ELEVATION
1/4" = 1'-0"



FLOOR 2 (RM 220)
2A CORRIDOR - W. ELEVATION
1/4" = 1'-0"



FLOOR 2 (RM 220)
2B CORRIDOR - W. ELEVATION
1/4" = 1'-0"



FLOOR 4 (RM 420&422)
2C CORRIDOR - W. ELEVATION
1/4" = 1'-0"

Prepared For: **119 Development, LLC**
 P.O. Box 7468
 Portland, ME 04112

Consultant: **STONEHILL & TAYLOR ARCHITECTS AND PLANNERS**
 31 W. 27th Street New York, NY 10001
 (212) 226-8898 Fax (212) 941-1874

Architect: **ARCHETYPE architects**
 48 Union Wharf Portland, Maine 04101
 (207) 772-6022 Fax (207) 772-4056

Project: **Press Hotel**
 119 Exchange St.
 Portland, ME 04101

Date: **06 SEPT, 2013**
 Scale: **AS NOTED**
 Revisions:
 1 13-07-01 30% Marriott Submission
 2 13-09-09 60% Marriott Sub. & Pric
 3 13-10-14 Issue for Bid & Marriott Revw

INTERIOR ELEVATIONS
TYPICAL G.R CORRIDOR
ELEVATION

ID-7.00