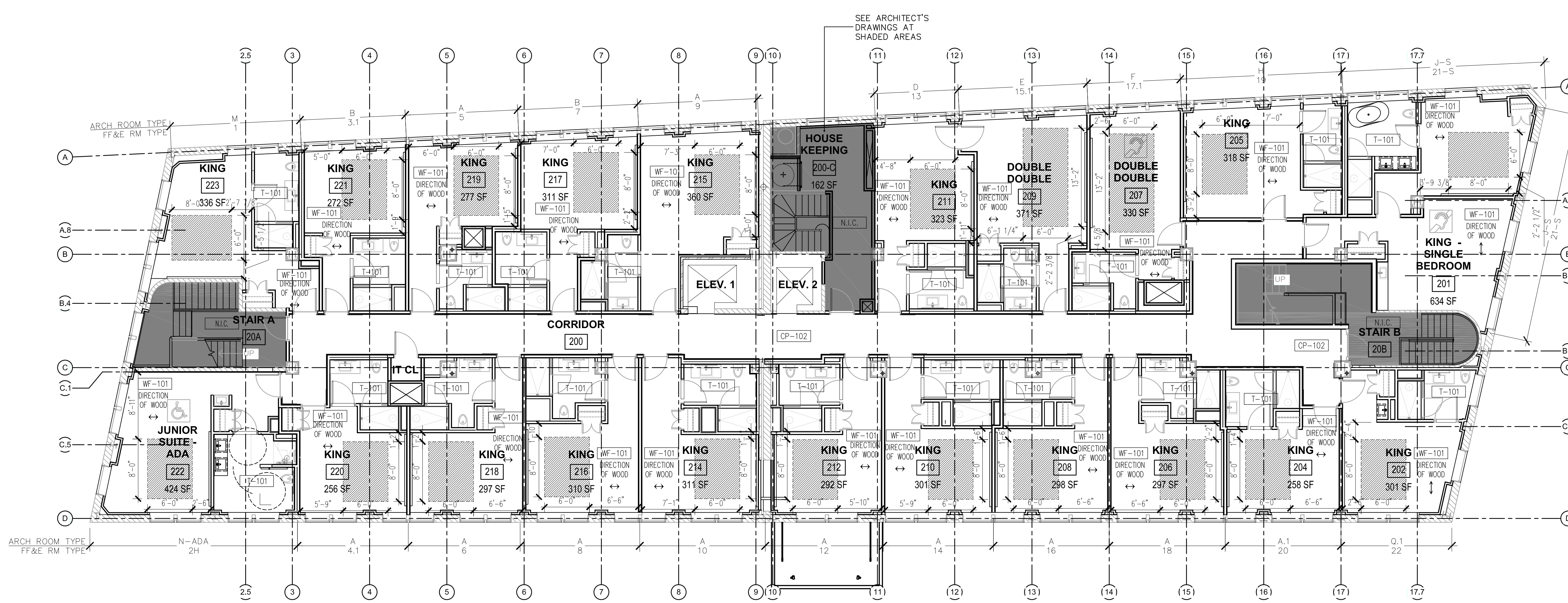


SHEET NOTES:

1. HATCHED AREAS INDICATE PLYWOOD INSET.
2. ALL GUESTROOM BATHROOM FLOORS TO HAVE TL-101, SHOWER FLOORS TO HAVE TL-102 TYP. U.O.N.
3. REFER TO ID-9.01 FOR FINISH SCHEDULE.

2 | 3RD FLOOR - FINISH PLAN
1/8" = 1'-0"



1 | 2ND FLOOR - FINISH PLAN
1/8" = 1'-0"

Prepared For:
119 Development, LLC
P.O. Box 7468
Portland, ME 04112

Consultant:
STONEHILL & TAYLOR ARCHITECTS AND PLANNERS
31 W. 27th Street New York, NY 10001
(212) 226-8898 Fax (212) 941-1874

Architect:
ARCHETYPE architects
48 Union Wharf Portland, Maine 04101
(207) 772-6022 Fax (207) 772-4056

Project:
Press Hotel
119 Exchange St.
Portland, ME 04101

Revisions:

1	13-07-01	30% Marriott Submission
2	13-09-09	60% Marriott Sub. & Pric.
3	13-10-14	Issue for Bid & Marriott Rev.

Date: **06 SEPT, 2013**
Scale: **1/8" = 1'-0"**
FLOOR 2&3 FINISH PLANS

ID-4.03