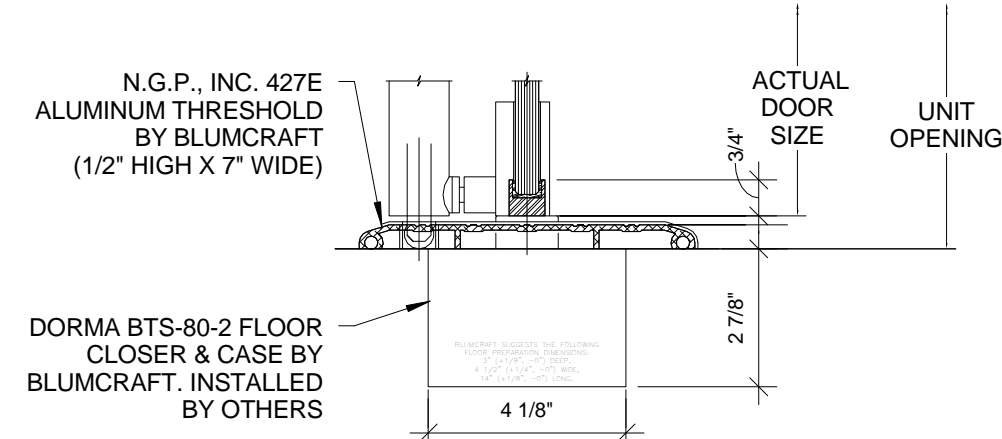
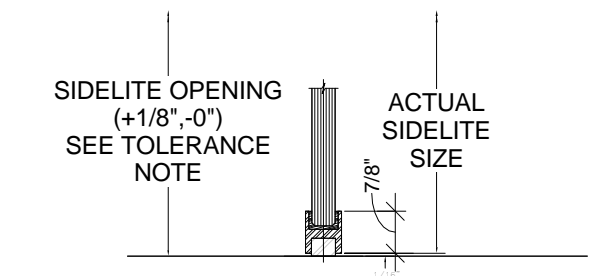


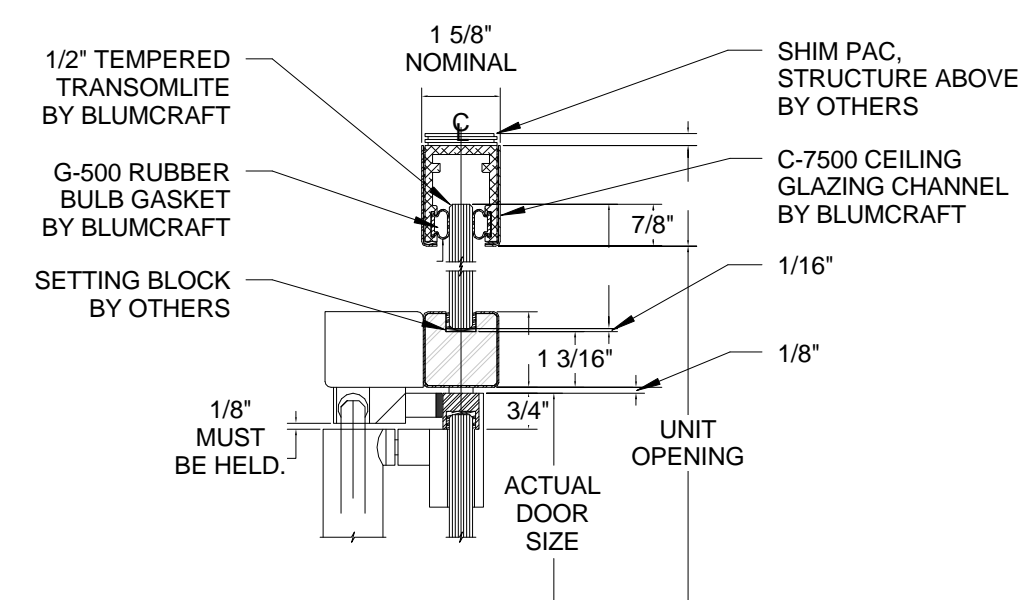
5 FRAMELESS DOOR HEAD
3" = 1'-0"



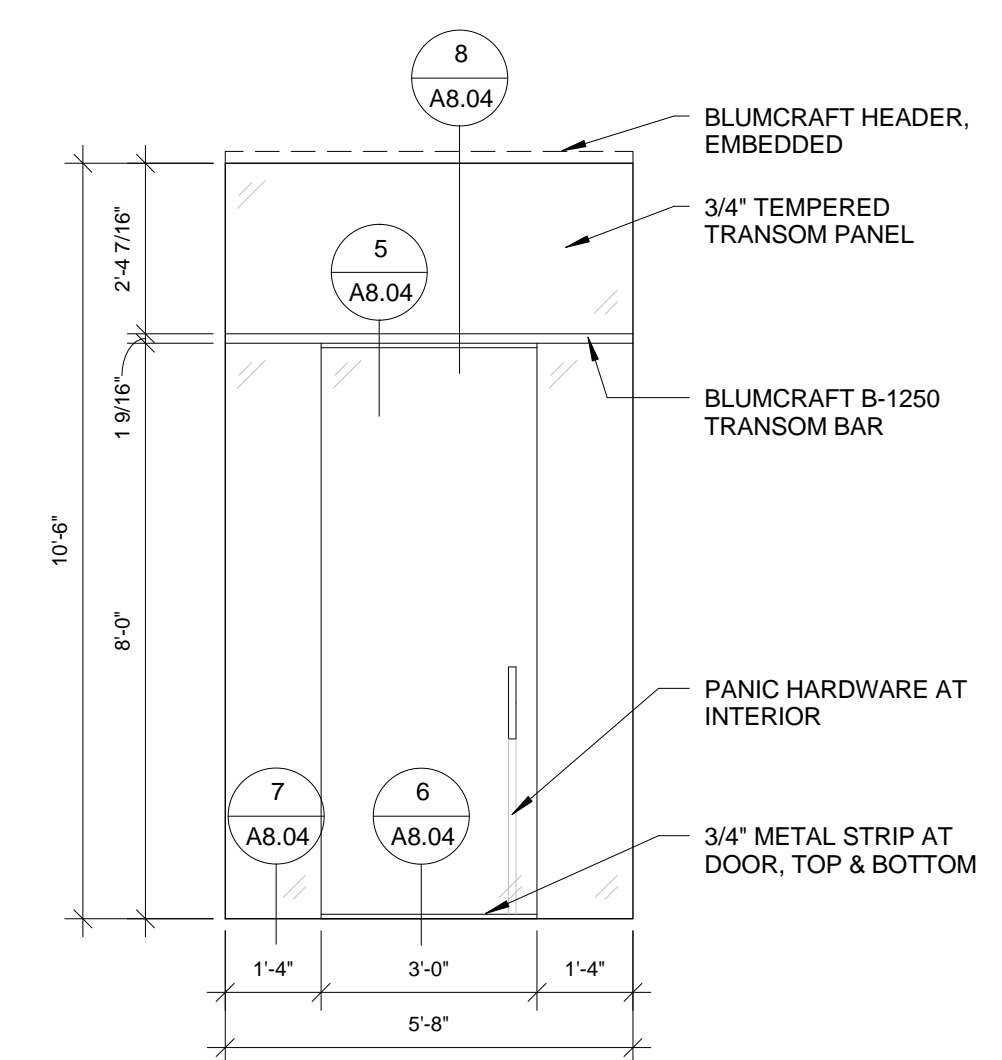
6 FRAMELESS THRESHOLD
3" = 1'-0"



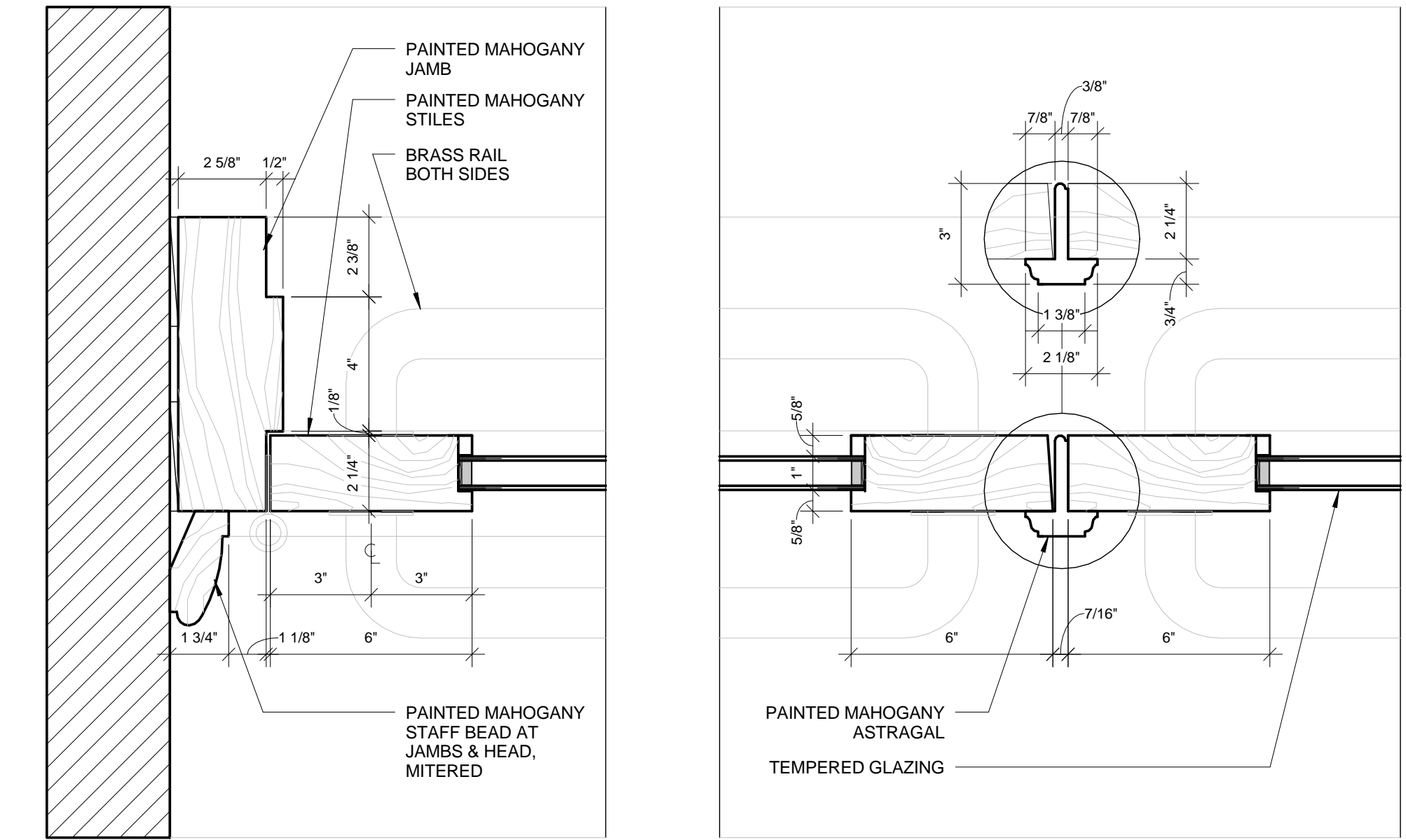
7 FRAMELESS SIDELITE BASE
3" = 1'-0"



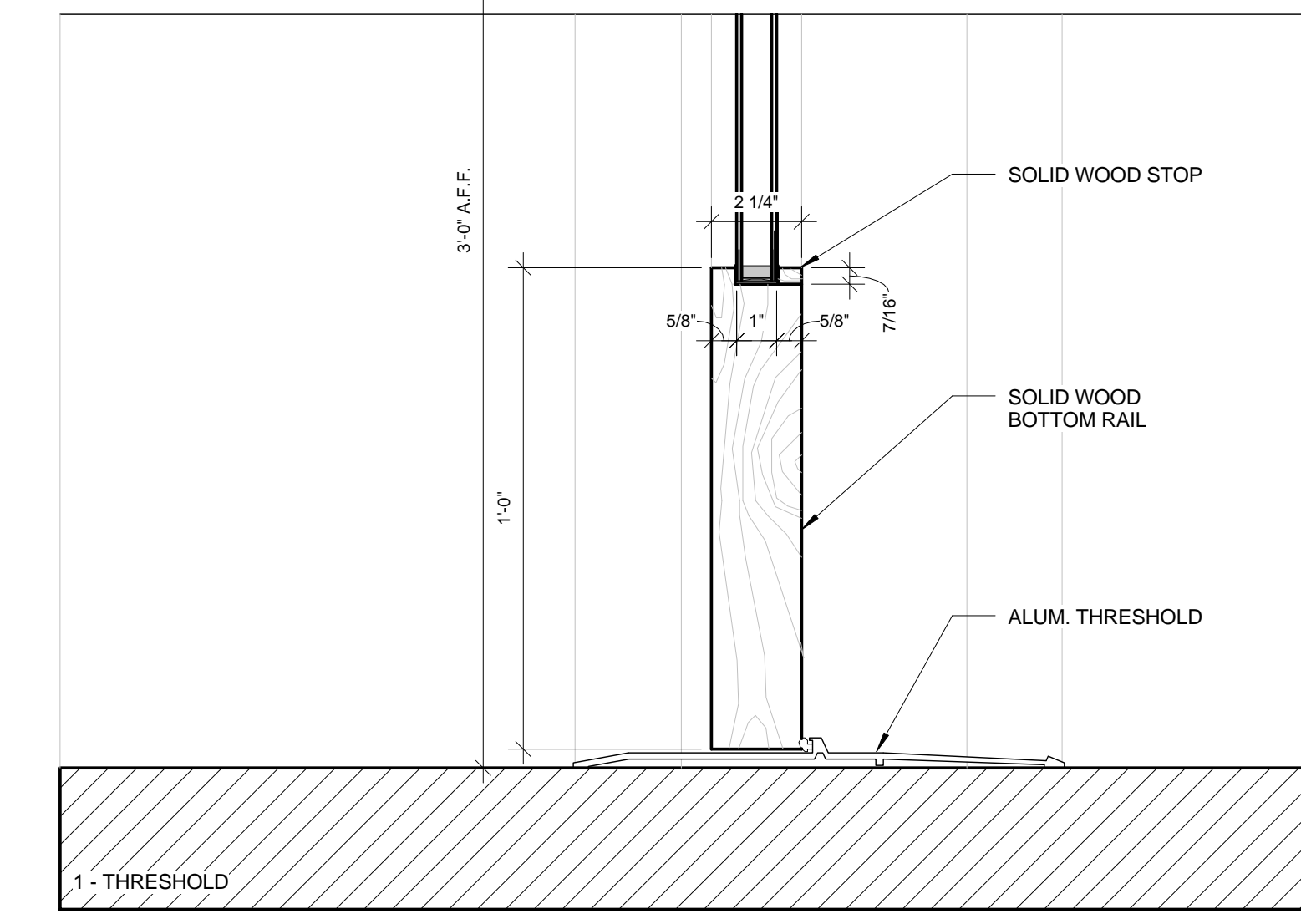
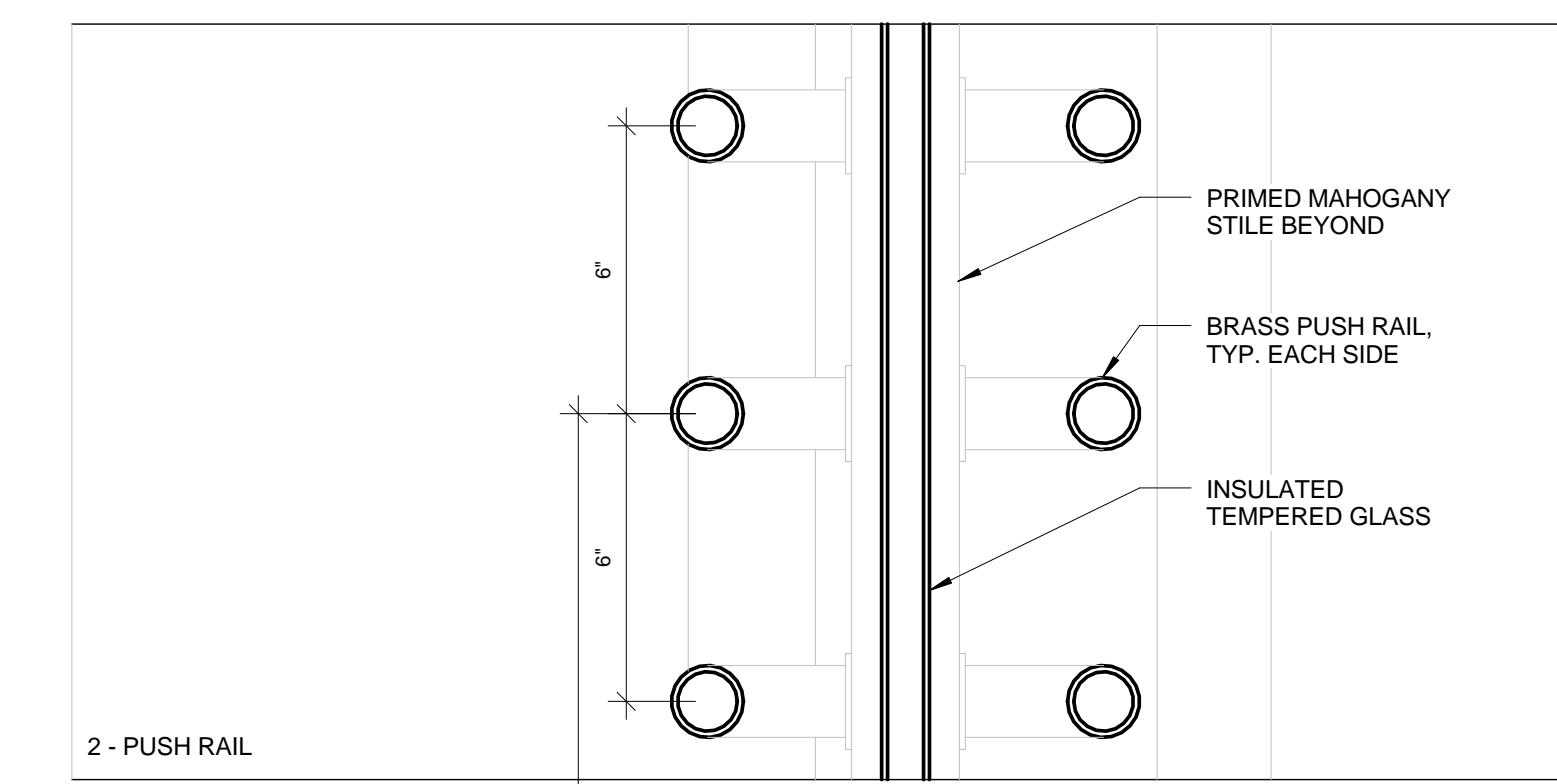
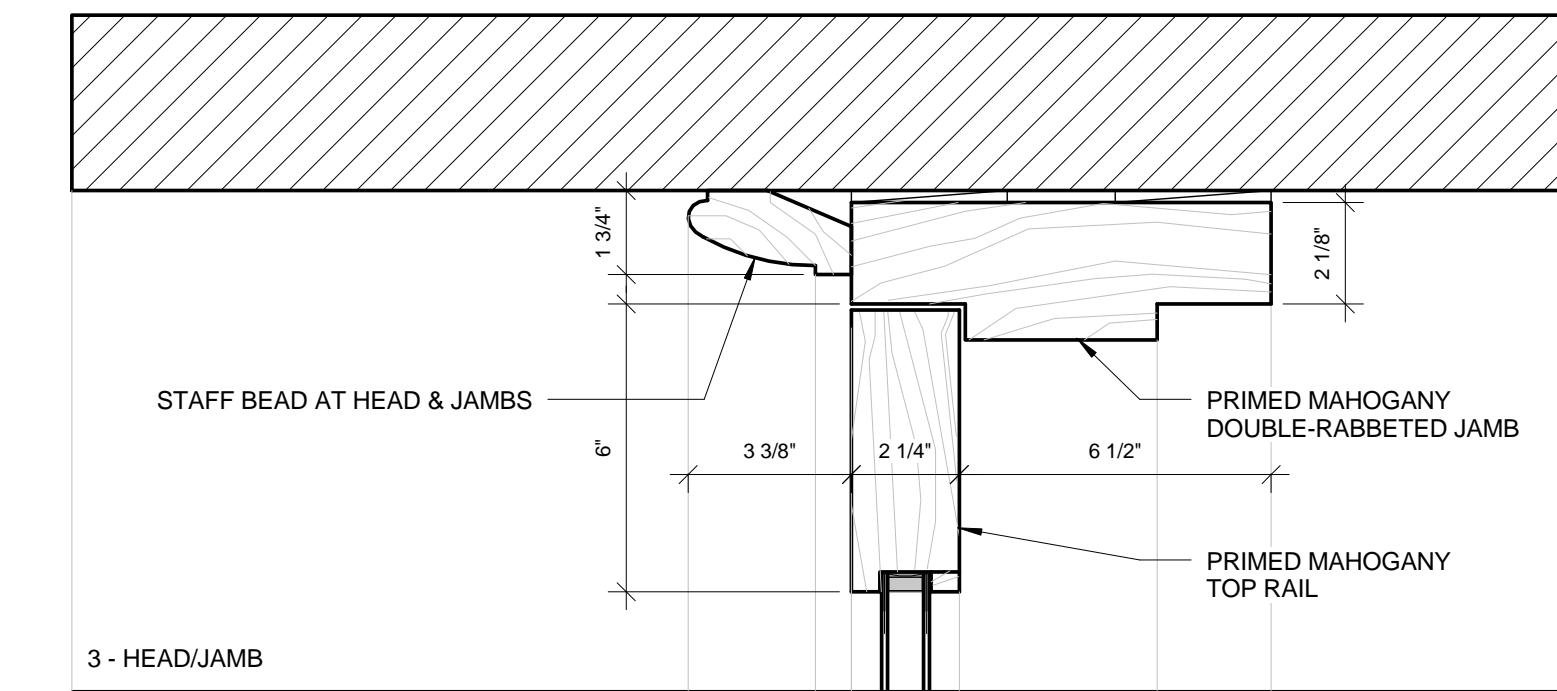
8 FRAMELESS DOOR TRANSOM HEADER
3" = 1'-0"



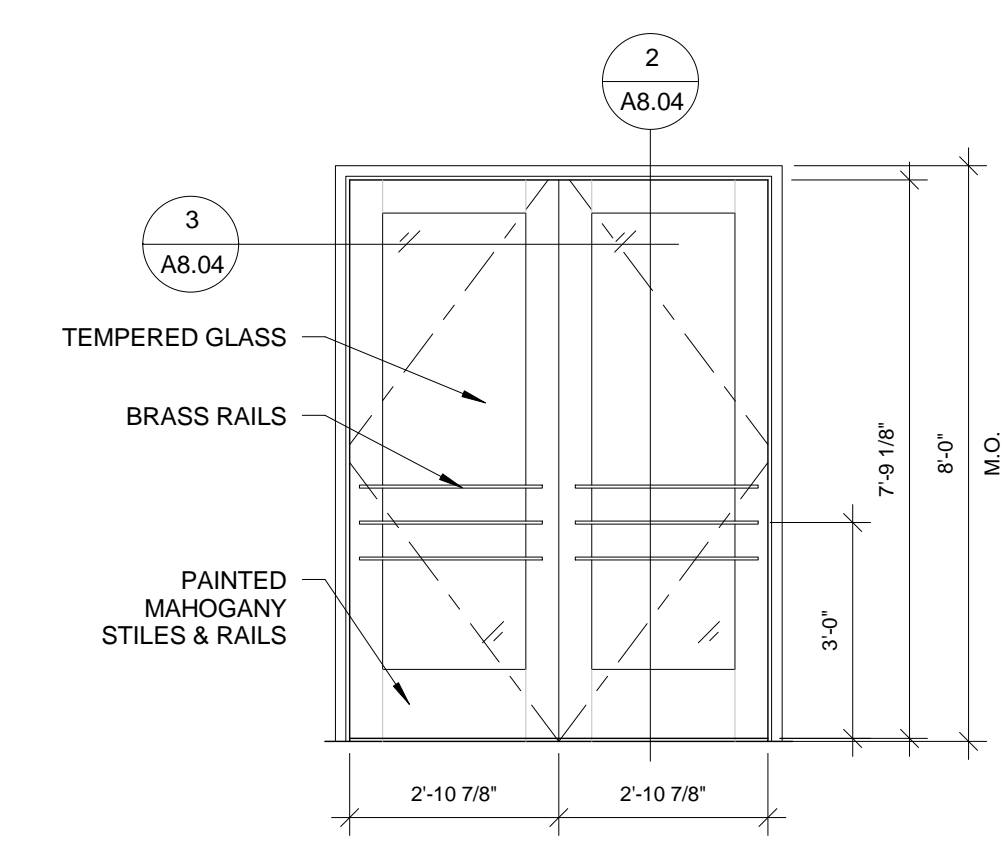
4 ENTRY DOOR ELEVATION AT EXCHANGE STREET
3/8" = 1'-0"



3 HISTORIC ENTRY DOOR HORIZONTAL SECTION AT GLAZING (1)
3" = 1'-0"



2 HISTORIC ENTRY DOOR VERTICAL SECTION (1)
3" = 1'-0"



1 HISTORIC ENTRY DOOR ELEVATION
3/8" = 1'-0"

Prepared For:
119 Development, LLC
P.O. Box 7486
Portland, ME 04112

Consultant:

ARCHETYPE architects
48 Union Wharf Portland, Maine 04101
(207) 772-6022 Fax (207) 772-4056

Architect:

PRESS HOTEL
390 CONGRESS STREET
PORTLAND, ME 04101

Project:

Revisions:
2 13_09-09 60% Marriott Sub. & Pric.
3 13_10-14 Issue for Bid & Marriott Revw

Date: 14 OCT 13

Scale: As indicated

A8.04

EXTERIOR HISTORIC & FRAMELESS GLASS DOOR DETAILS