

**CEILING LEGEND**

**CEILING TYPES**

- PAINTED EXPOSED STRUCTURE
- RESTORED CONCRETE STRUCTURE TREATED WITH STAIN/SEALANT AS NOTED/APPROVE BY ARCHITECT
- GYP BD. CEILING
- 2X4 ACOUSTIC TILE CEILING
- WOOD SLAT CEILING

**LIGHTING**

- RECESSED LIGHT
- WALL SCONCE LIGHT
- 2X4 FL LIGHT
- 1X4 FLUORESCENT TROFFER
- TRACK LIGHTING
- SEE ELECTRICAL DRAWINGS AND SPECIFICATIONS FOR LIGHTING TYPES

**MECHANICAL**

- RETURN
- SUPPLY
- LINEAR SUPPLY
- LINEAR RETURN
- HEAT PUMP
- SEE MECHANICAL DRAWINGS AND SPECIFICATIONS FOR MECHANICAL UNITS AND DIFFUSER TYPES

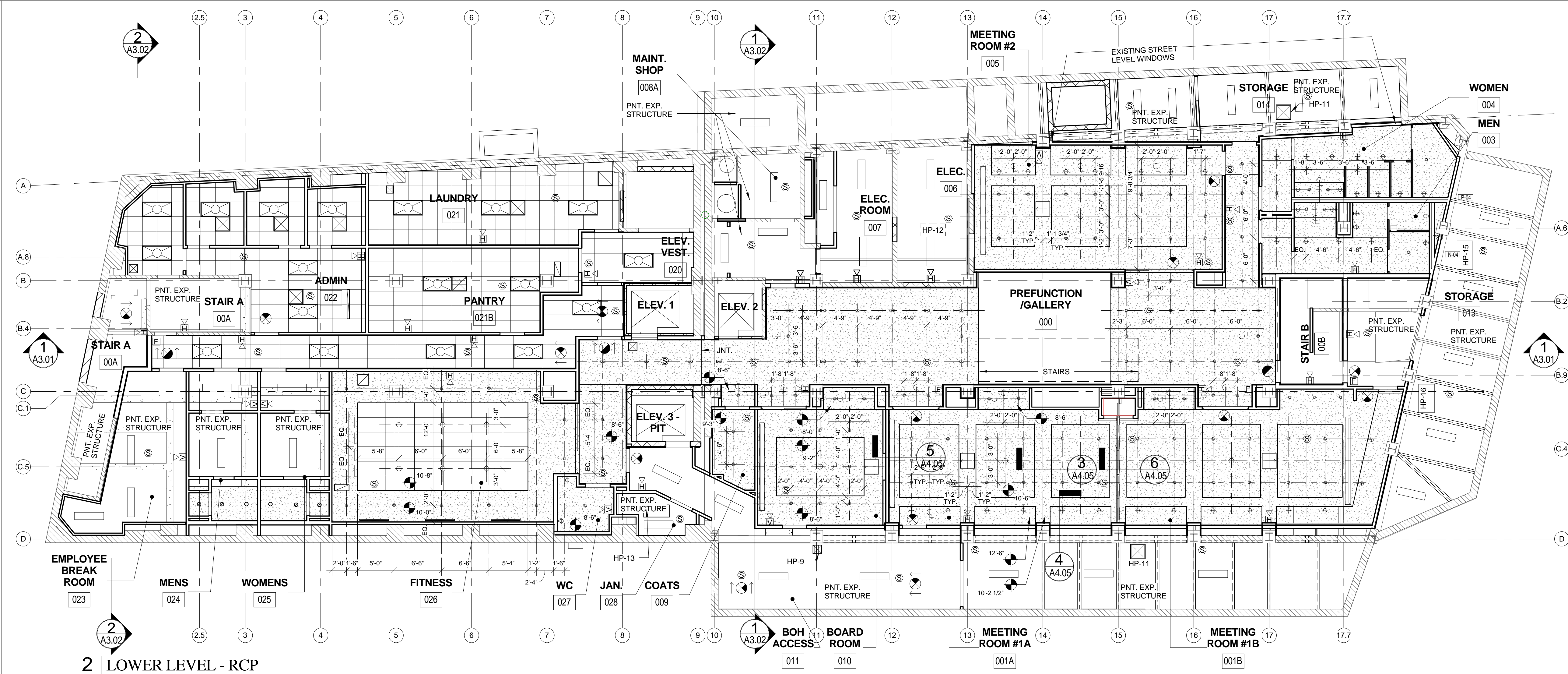
**LIFE SAFETY**

- EXIT LIGHT
- LIFE SAFETY DEVICES, SEE ELEC. & FA DRAWINGS
- SMOKE SCREEN
- SEE ELECTRICAL DRAWINGS AND SPECIFICATIONS FOR LIGHTING TYPES

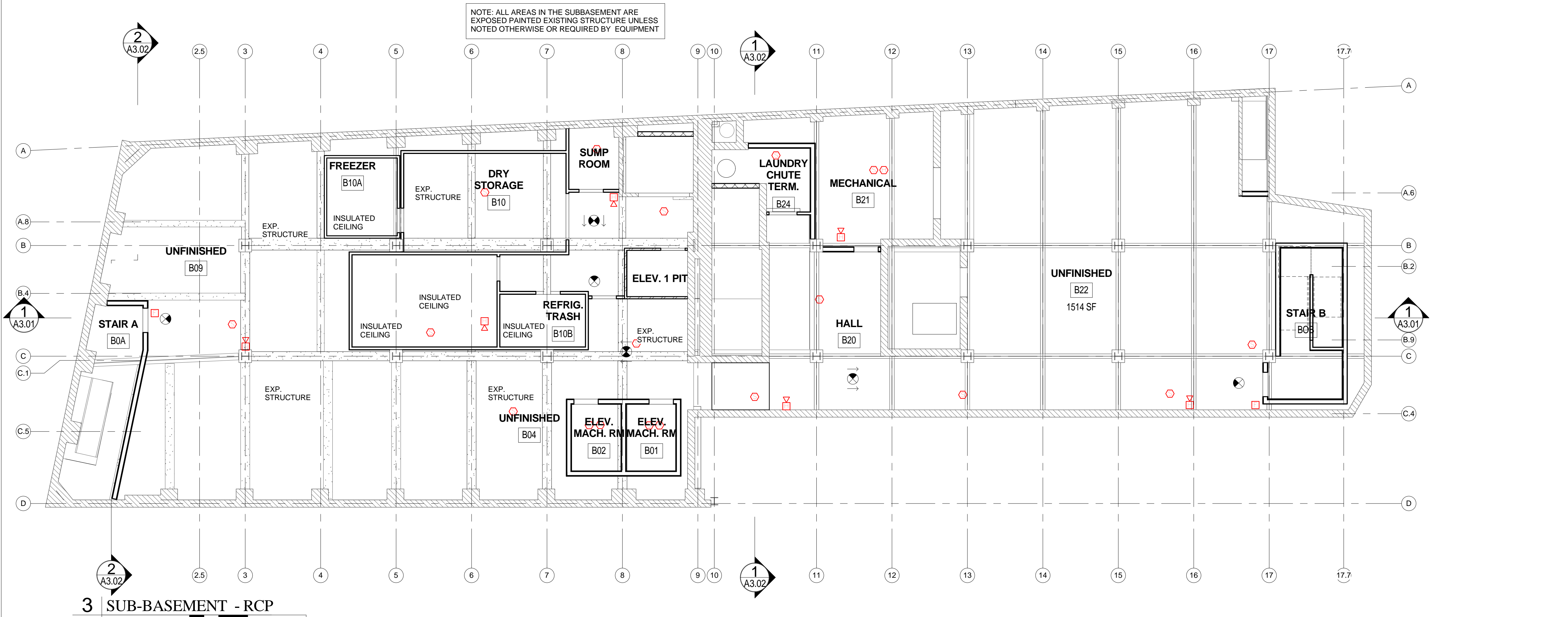
**AV**

**GENERAL CEILING NOTES**

1. FULL BUILDING, EXISTING BUILDING STRUCTURE IS COMPRISED OF A MIXTURE OF CONDITIONS INCLUDING, FIRE RATED STEEL & CONCRETE AND UNTREATED STRUCTURE. WORK IS TO COMPLY WITH CONSTRUCTION RATING REQUIREMENTS SHOWN IN LIFESAFETY DOCUMENTS, COLUMN, WALL AND FLOOR UL ASSEMBLIES, TO PROVIDE FOR A FULL AND COMPLETE RATED BUILDING ASSEMBLIES AS NOTED GOVERNING CODES, REGULATIONS AND RATED ASSEMBLIES, INCLUDING BUT NOT LIMITED TO THE IBC, NFPA, AND BY THE AHJ. SEE A4.00-A4.03 FOR GENERAL CONSTRUCTION CONDITIONS.
2. LEVELS 2-7 GUESTROOMS ARE COMPRISED OF 3 GENERAL CEILING AREAS: ENTRY AREAS, BATHROOM BLOCK (BATHROOM, CLOSET, MISC), AND LOFTED GENERAL AREAS. CEILINGS IN ENTRY AND BATHROOM AREAS ARE TYPICALLY NOTED ON RCP.
3. LEVELS 2-7 GUESTROOMS: WHERE CLOSETS OCCUR AWAY FROM THE BATHROOM BLOCK PROVIDE GYPSUM CEILING AT THE HEIGHT OF THE BATHROOM WHETHER SHOWN OR NOT.
4. LEVELS 2-7 GUESTROOMS: IN LOFTED GENERAL AREAS APPLY 5/8" GYPSUM BD ON 1/2" HAT CHANNEL CEILINGS APPLIED TO DECK, TYPICALLY.
5. LEVELS 2-7 GUESTROOMS: IN ADDITION OR IN CONCERT WITH STRUCTURE RATING WORK WRAP ALL EXISTING BEAMS WITH GYPSUM AS SHOWN IN TYPICAL INTERIOR DETAILS. SEE TYPICAL GUEST ROOM BEAM WRAP IN A-400 SERIES.



**2 LOWER LEVEL - RCF**  
1/8" = 1'-0"



**3 SUB-BASEMENT - RCF**  
1/8" = 1'-0"

NOTE: ALL AREAS IN THE SUBBASEMENT ARE EXPOSED PAINTED EXISTING STRUCTURE UNLESS NOTED OTHERWISE OR REQUIRED BY EQUIPMENT

Prepared For:  
**119 Development, LLC**  
P.O. Box 7486  
Portland, ME 04112

Consultant:  
**ARCHETYPE architects**  
48 Union Wharf Portland, Maine 04101  
(207) 772-6022 Fax (207) 772-4056

Architect:  
**PRESS HOTEL**  
390 CONGRESS STREET  
PORTLAND, ME 04101

Project:  
Revisions:  
1 13\_09-09 60% Marriott Sub. & Pric.  
2 13\_10-14 Issue for Bid & Marriott Revw

Date:  
14 OCT 13  
Scale:  
1/8" = 1'-0"

**LOWER LEVEL AND SUB-BASEMENT RCF**  
**A7.01**