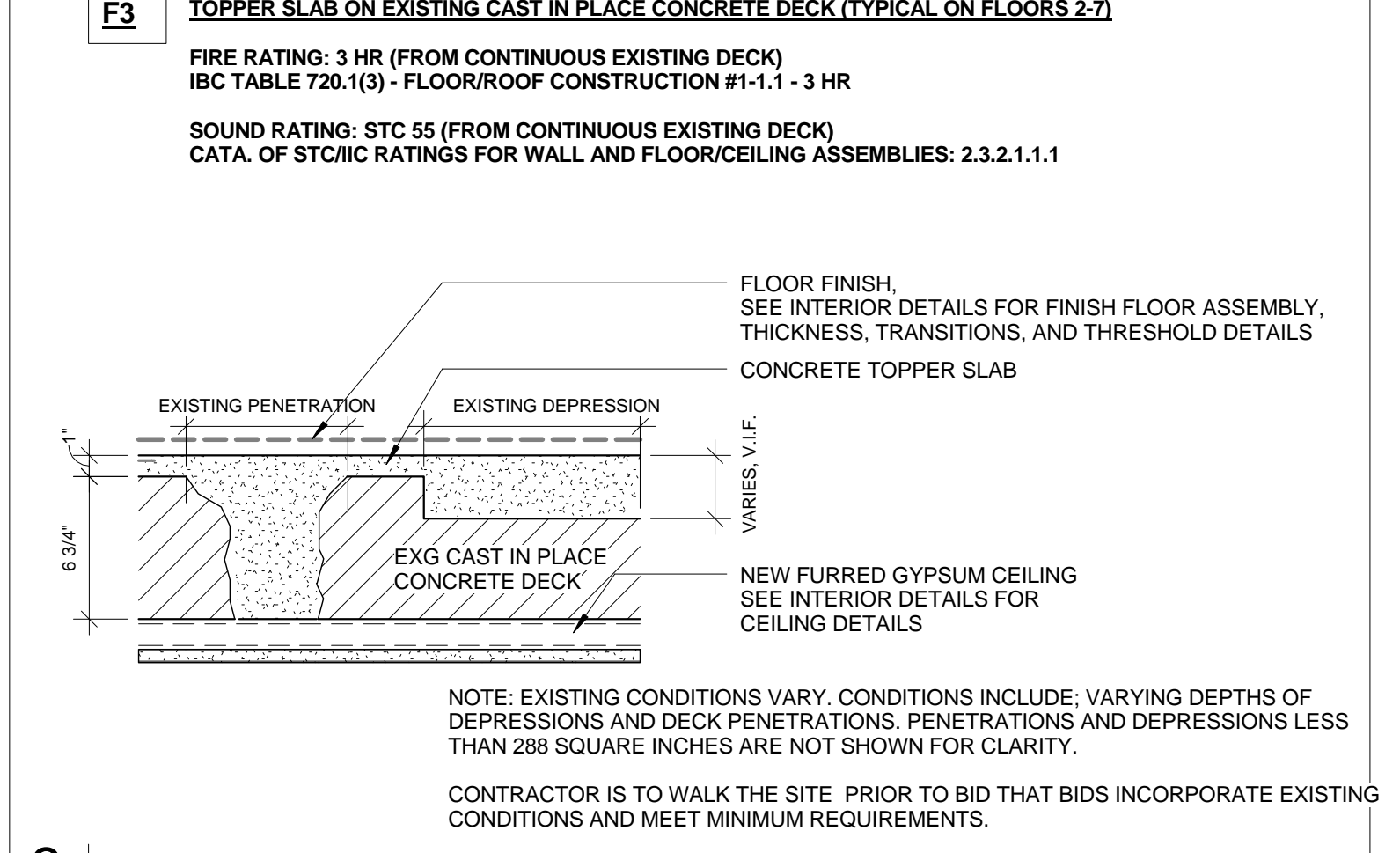
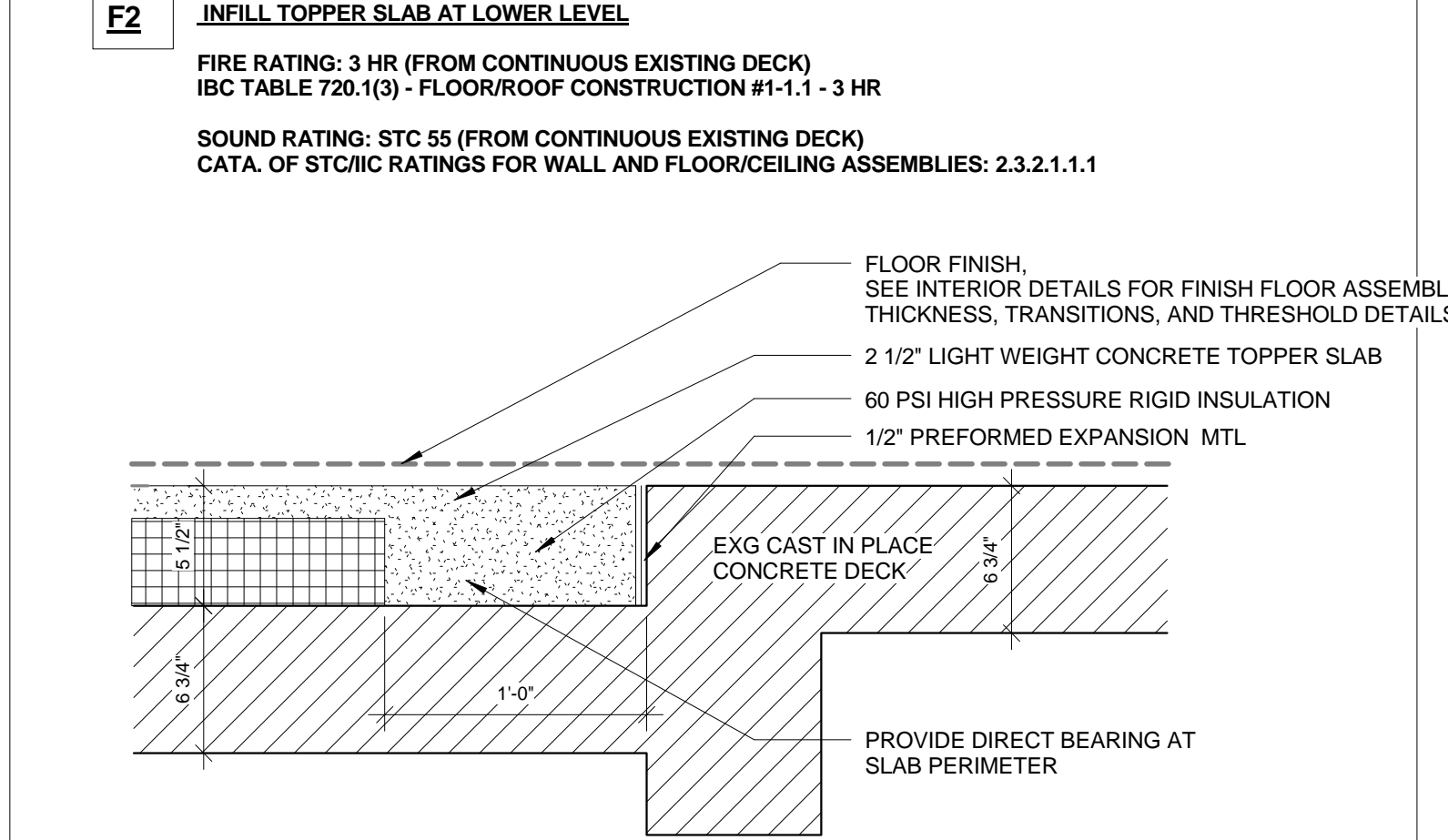


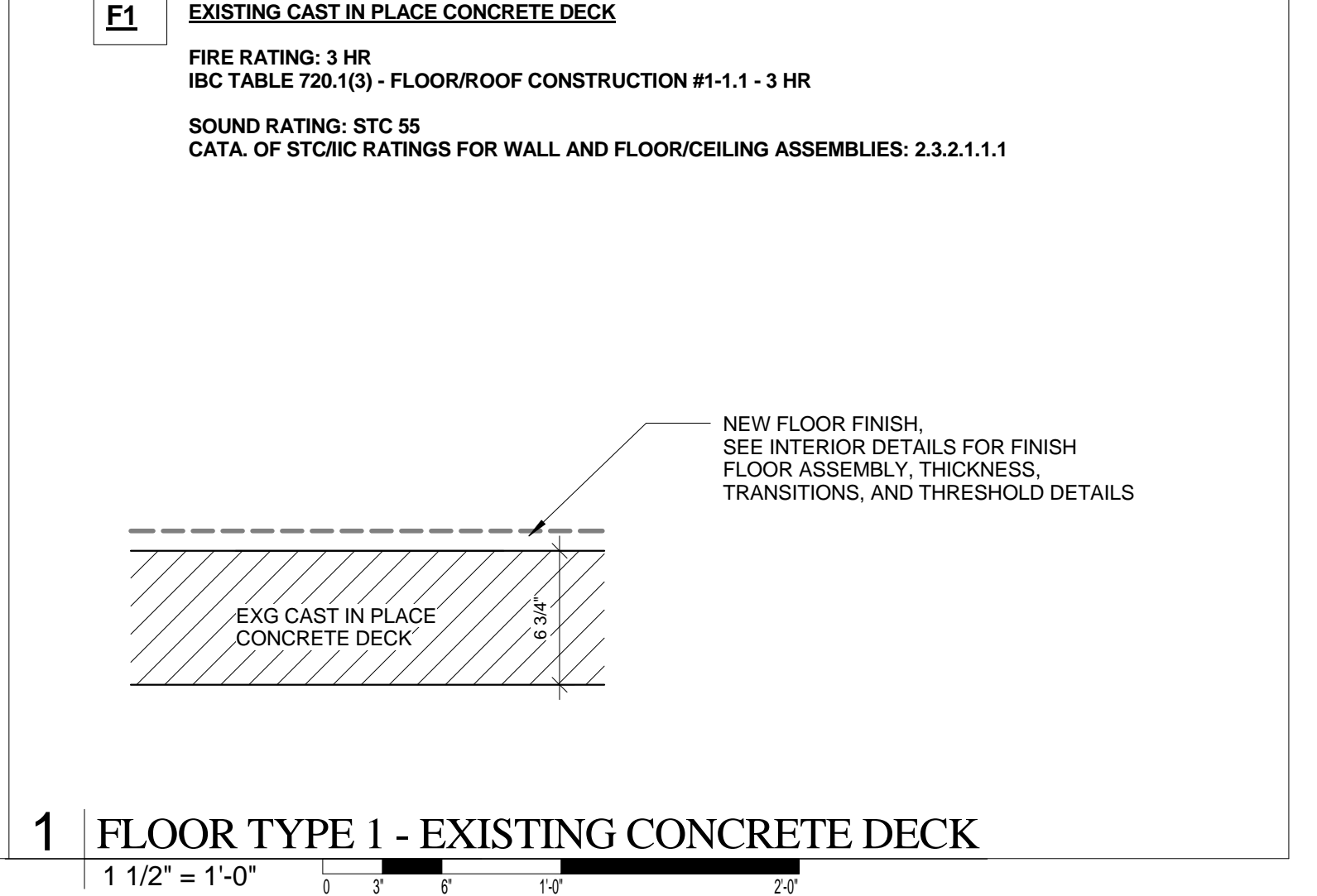
**4 FLOOR TYPE 4 - TYPICAL NEW LANDING**  
1 1/2" = 1'-0"



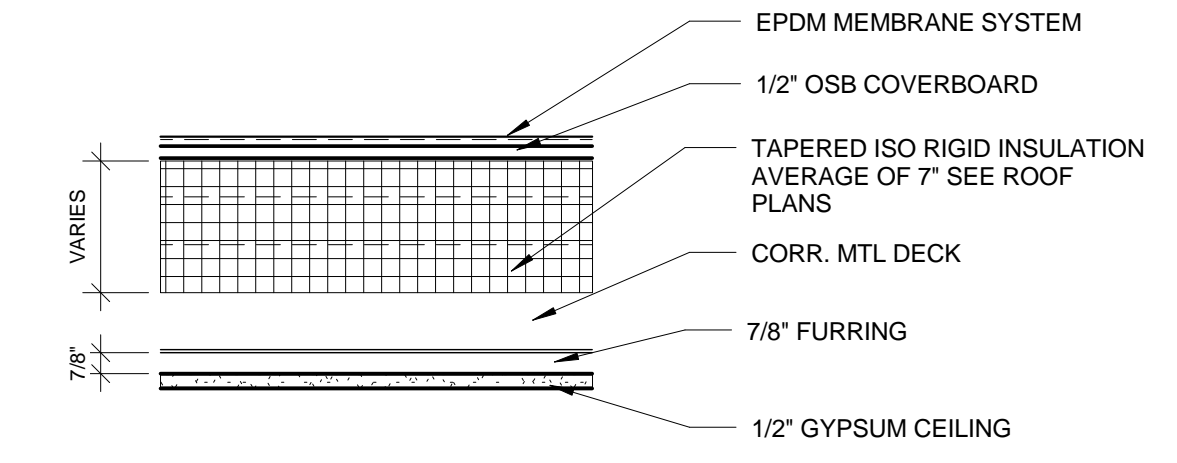
**3 FLOOR TYPE 3 - TYPICAL TOPPER SLAB LEVELS 2-7**  
1 1/2" = 1'-0"



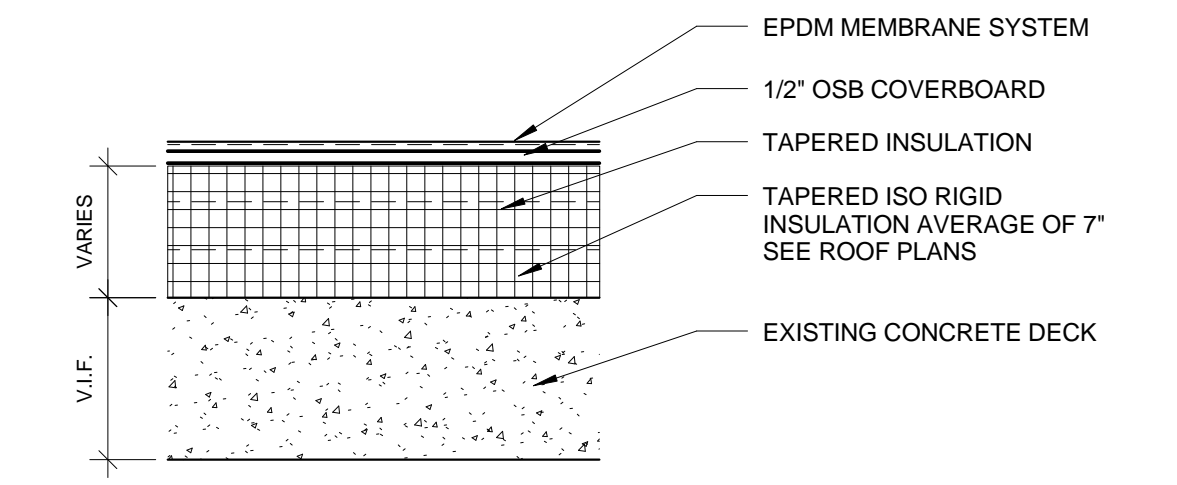
**2 FLOOR TYPE 2 - INFILL TOPPER SLAB AT LL**  
1 1/2" = 1'-0"



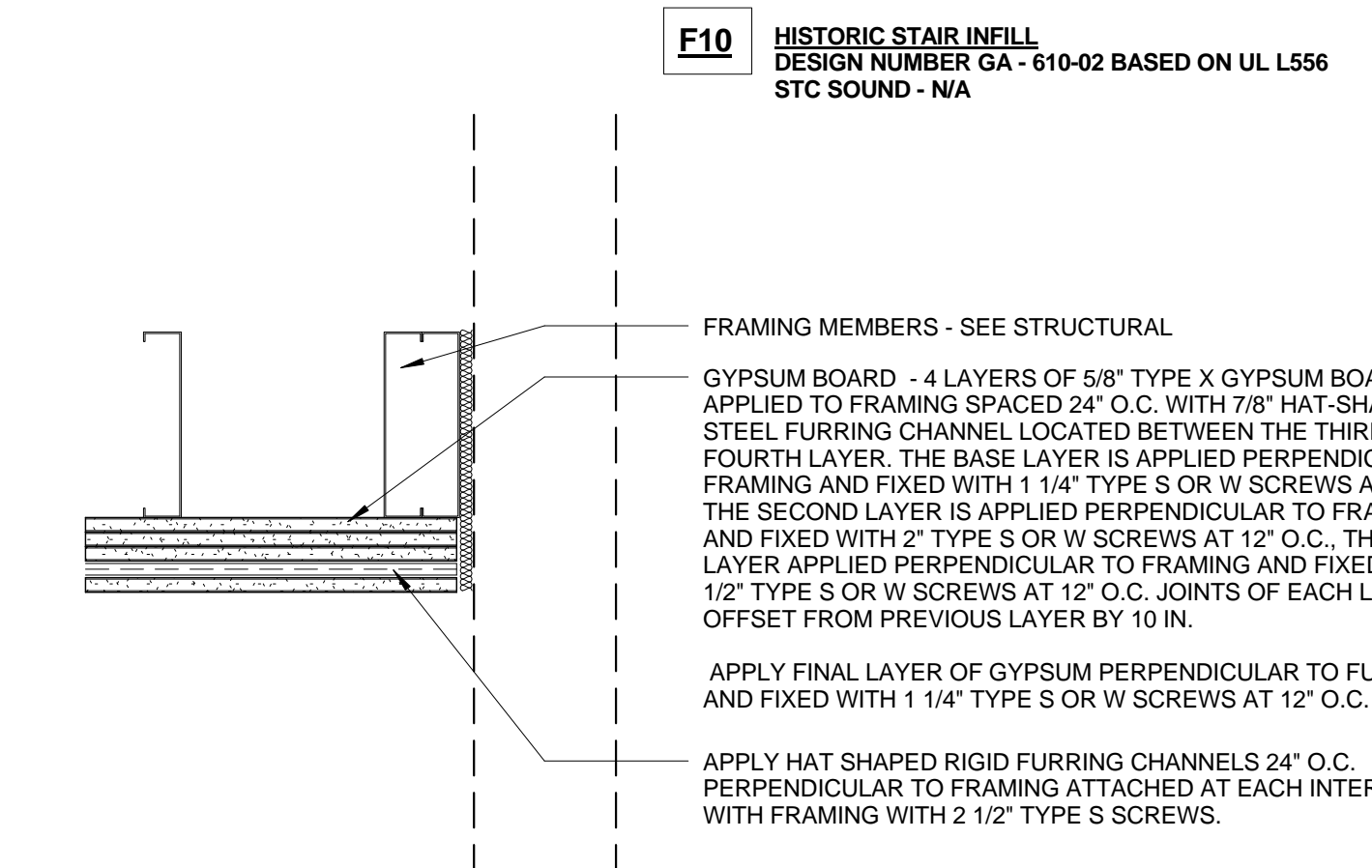
**1 FLOOR TYPE 1 - EXISTING CONCRETE DECK**  
1 1/2" = 1'-0"



**7 ROOF TYPE 2**  
1 1/2" = 1'-0"



**6 ROOF TYPE 1**  
1 1/2" = 1'-0"



**5 INFILL DECK AT HISTORIC STAIR**  
1 1/2" = 1'-0"

Prepared For:  
**119 Development, LLC**  
P.O. Box 7486  
Portland, ME 04112

Consultant:  
**ARCHETYPE architects**  
48 Union Wharf Portland, Maine 04101  
(207) 772-6022 Fax (207) 772-4056

Architect:  
**PRESS HOTEL**  
390 CONGRESS STREET  
PORTLAND, ME 04101

Revisions:  
2 13\_09-09 60% Marriott Sub. & Pric.  
3 13\_10-14 Issue for Bid & Marriott Revw

Date: 14 OCT 13  
Scale: 1 1/2" = 1'-0"  
**FLOOR, CEILING, & ROOF TYPES**

**A4.02**