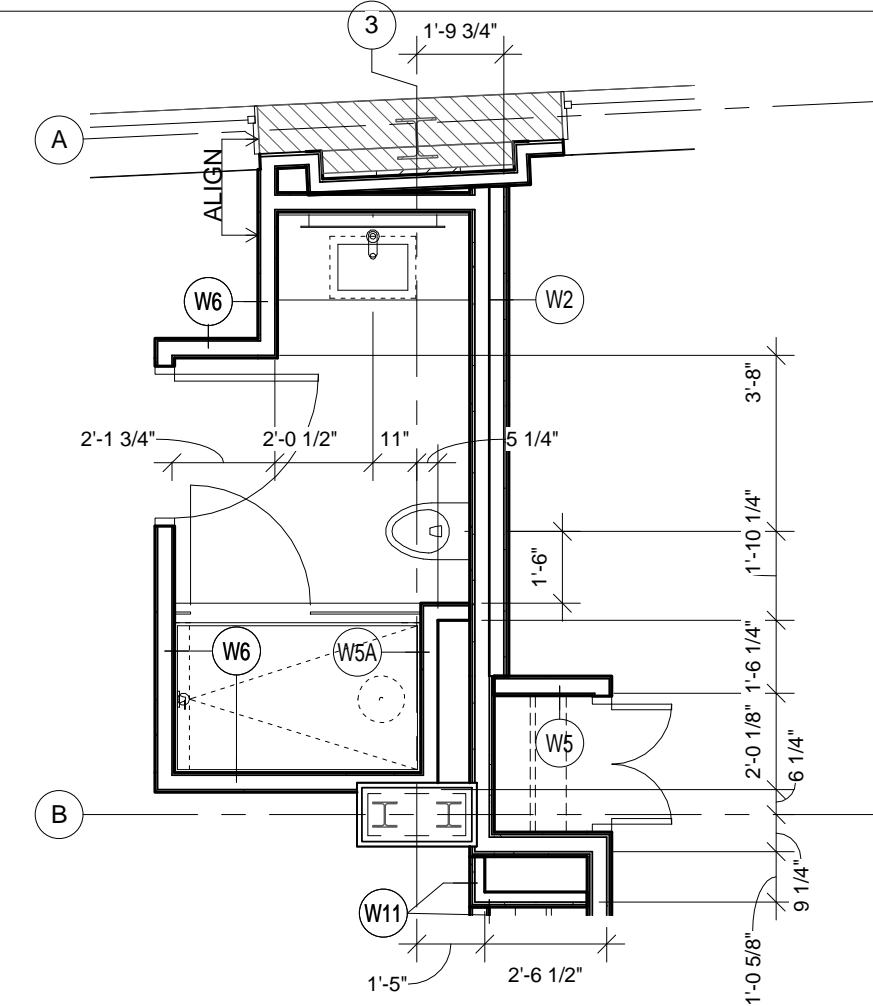
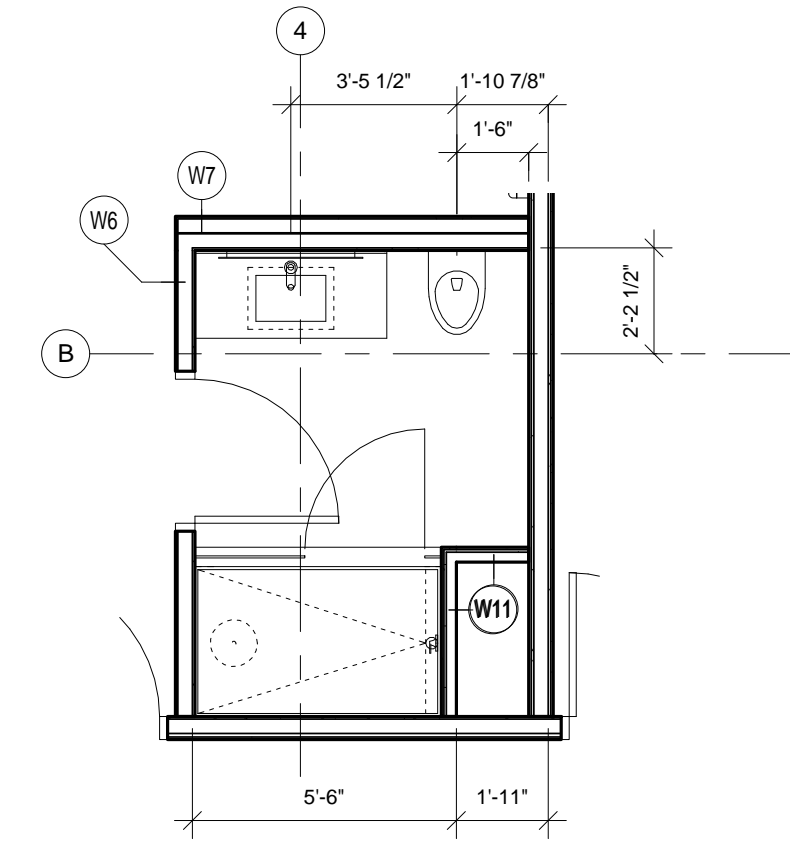


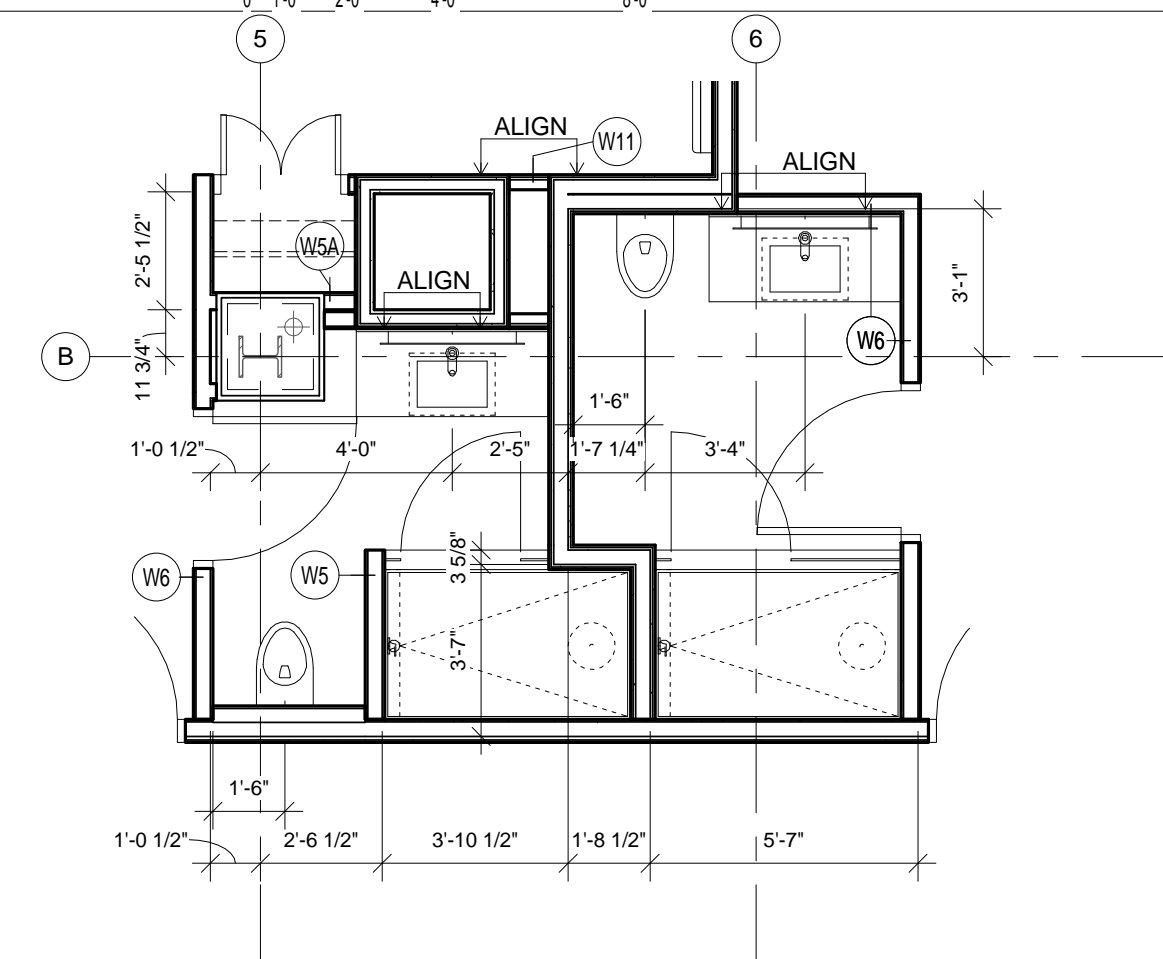
**9** ENLARGED BATHROOM - ROOM 322-522  
1/4" = 1'-0"



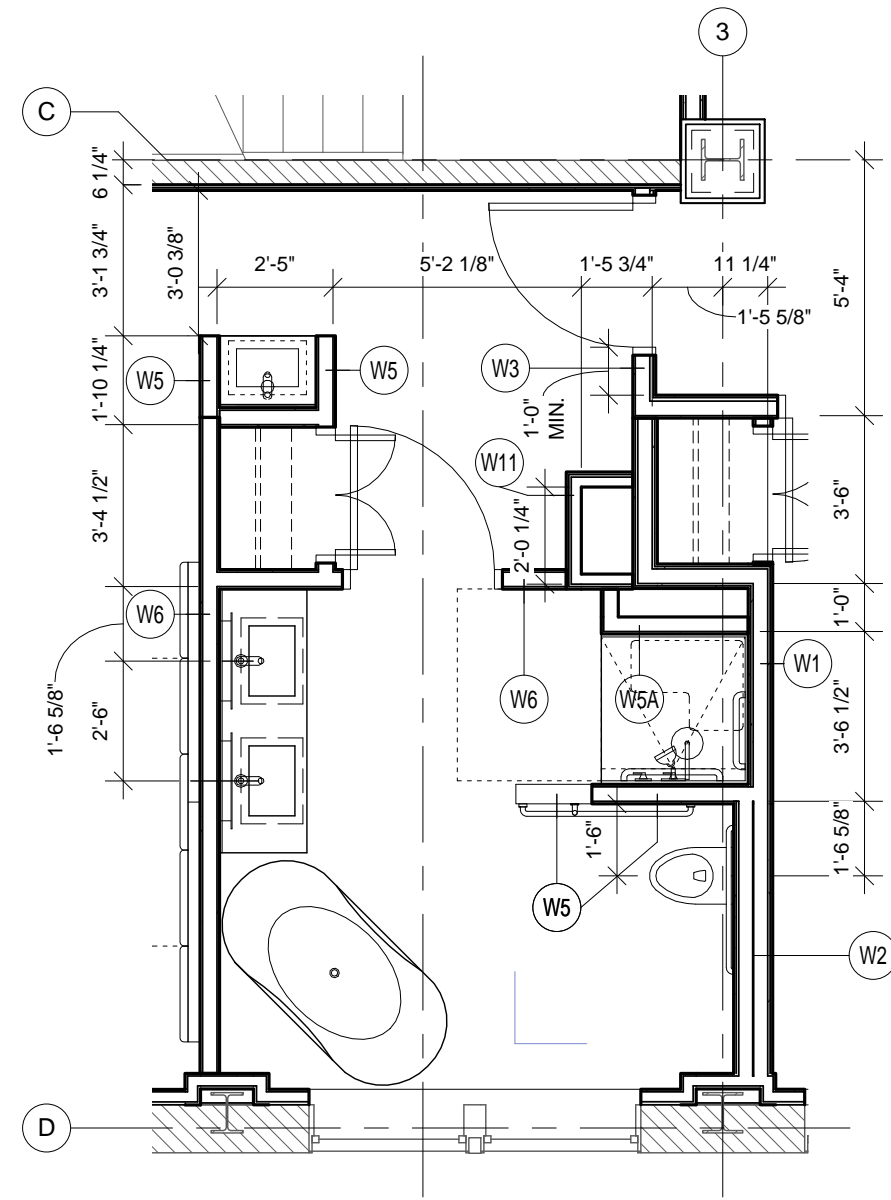
**7** ENLARGED BATHROOM - ROOM 523  
1/4" = 1'-0"



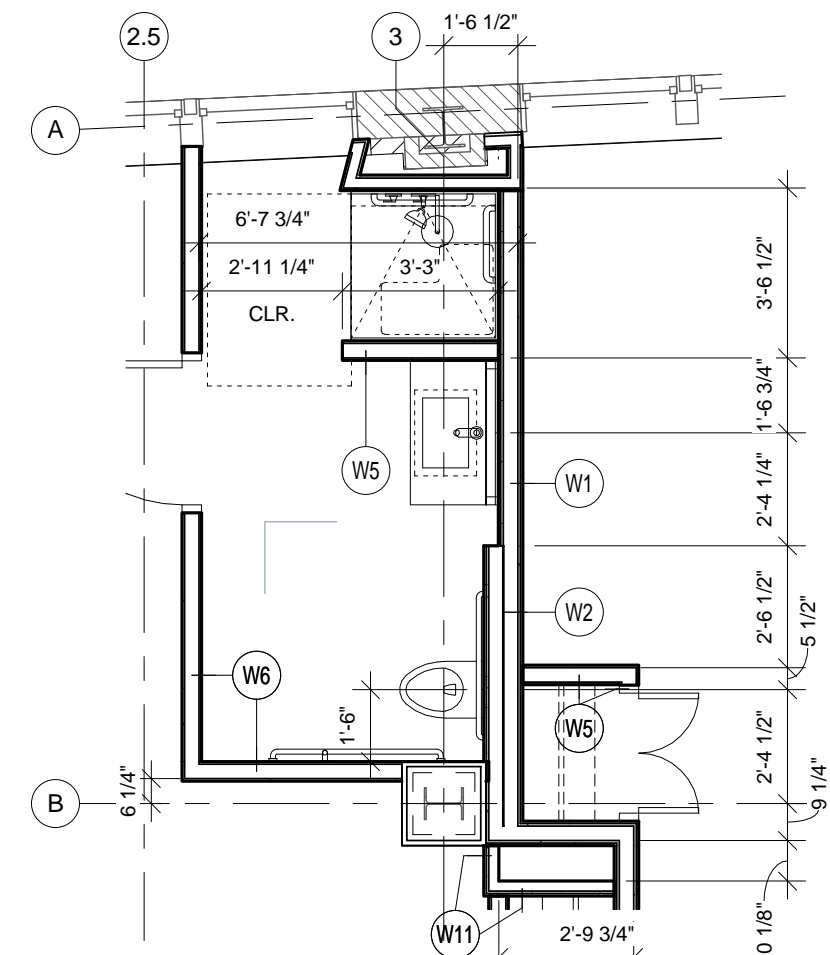
**4** ENLARGED BATHROOM - ROOM 221 - 521  
1/4" = 1'-0"



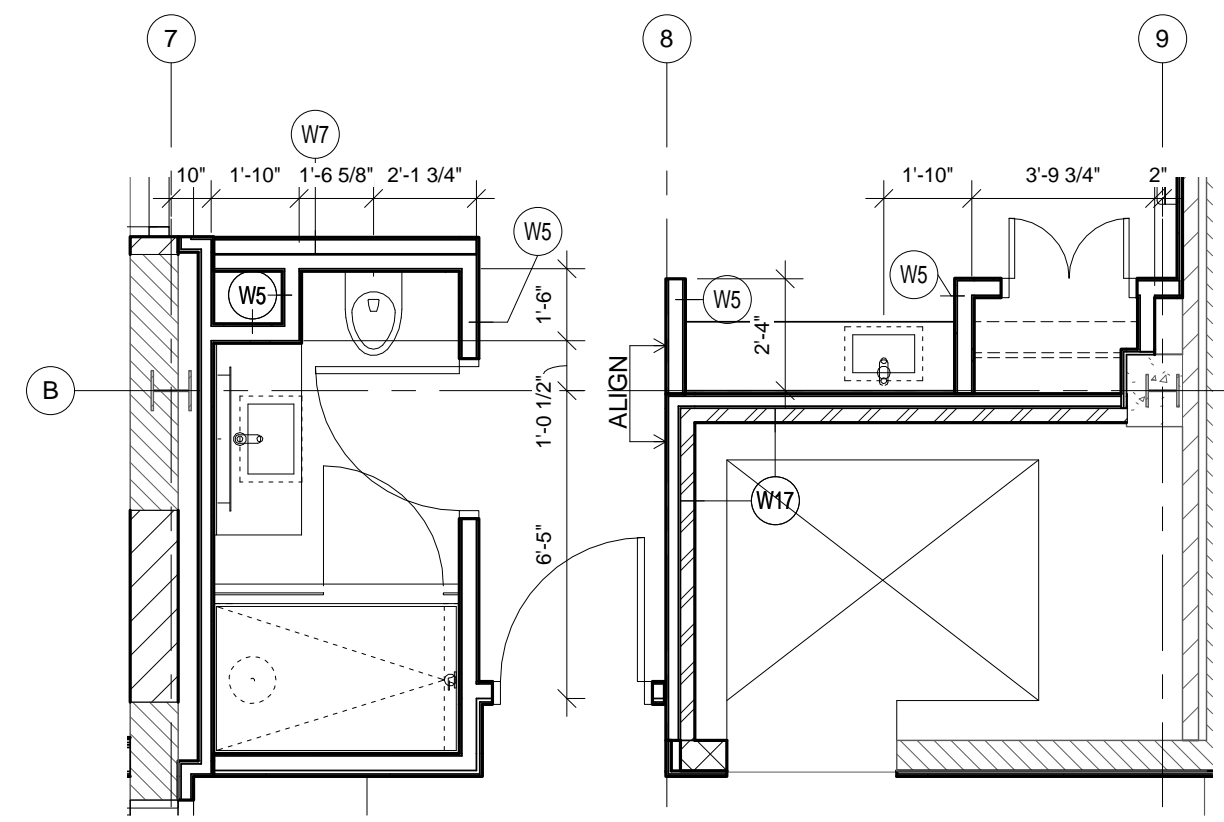
**3** ENLARGED BATHROOM - ROOM 217 & 219 - 517 & 519  
1/4" = 1'-0"



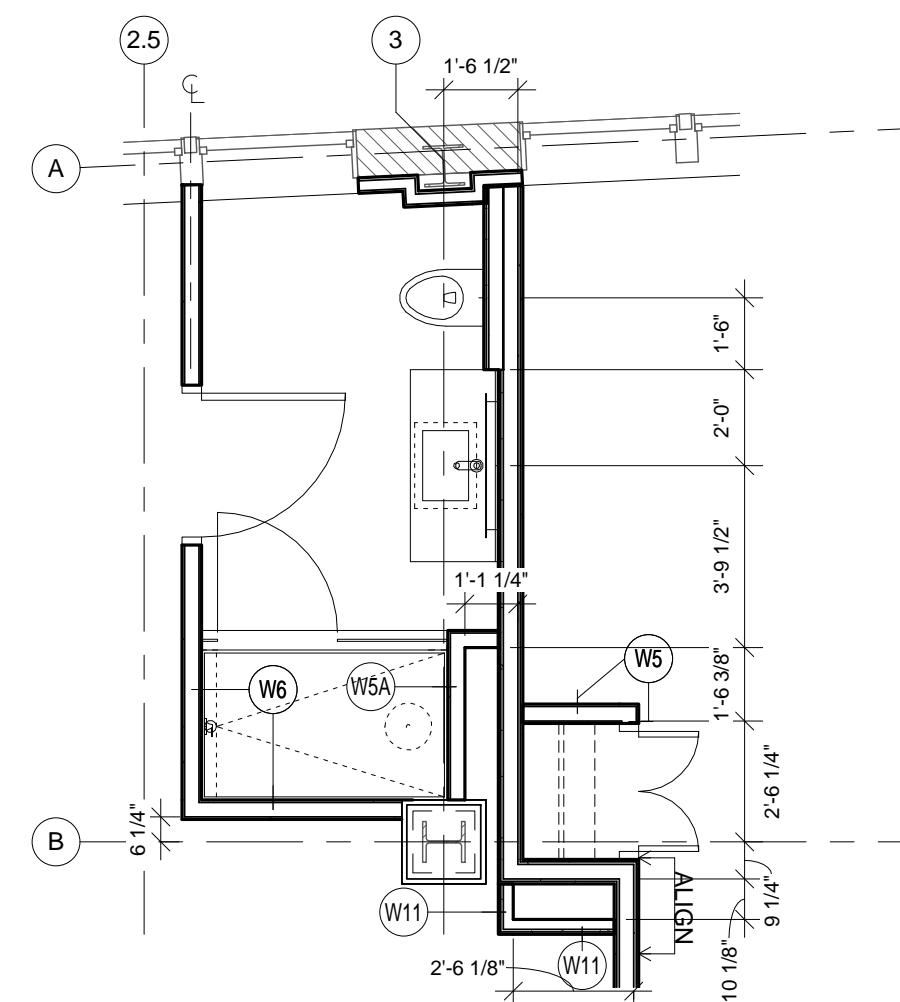
**8** ENLARGED BATHROOM - ROOM 222  
1/4" = 1'-0"



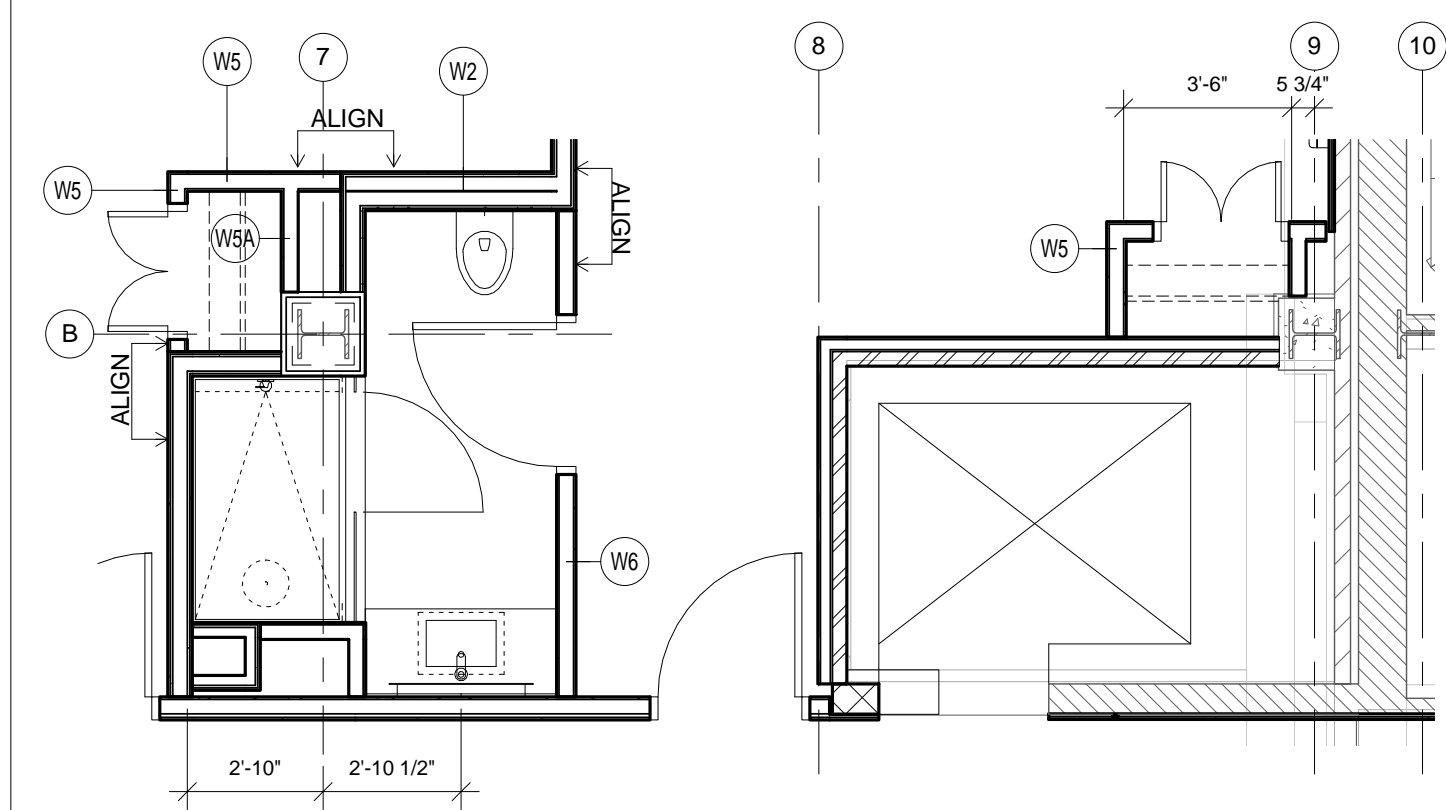
**6** ENLARGED BATHROOM - ROOM 323  
1/4" = 1'-0"



**2** ENLARGED BATHROOM - ROOM 615  
1/4" = 1'-0"



**5** ENLARGED BATHROOM - ROOM 223 & 423  
1/4" = 1'-0"



**1** ENLARGED BATHROOM - ROOM 215 - 515  
1/4" = 1'-0"

Prepared For:  
**119 Development, LLC**  
P.O. Box 7486  
Portland, ME 04112

Consultant:  
**ARCHETYPE Architects**  
48 Union Wharf Portland, Maine 04101  
(207) 772-6022 Fax (207) 772-4056

Project:  
**PRESS HOTEL**  
390 CONGRESS STREET  
PORTLAND, ME 04101

Revisions:  
3 13\_10-14 Issue for Bid & Marriott Rev

Date:  
14 OCT 13  
Scale:  
1/4" = 1'-0"  
ENLARGED PLAN -  
GUESTROOM  
BATHROOM

**A3.33**