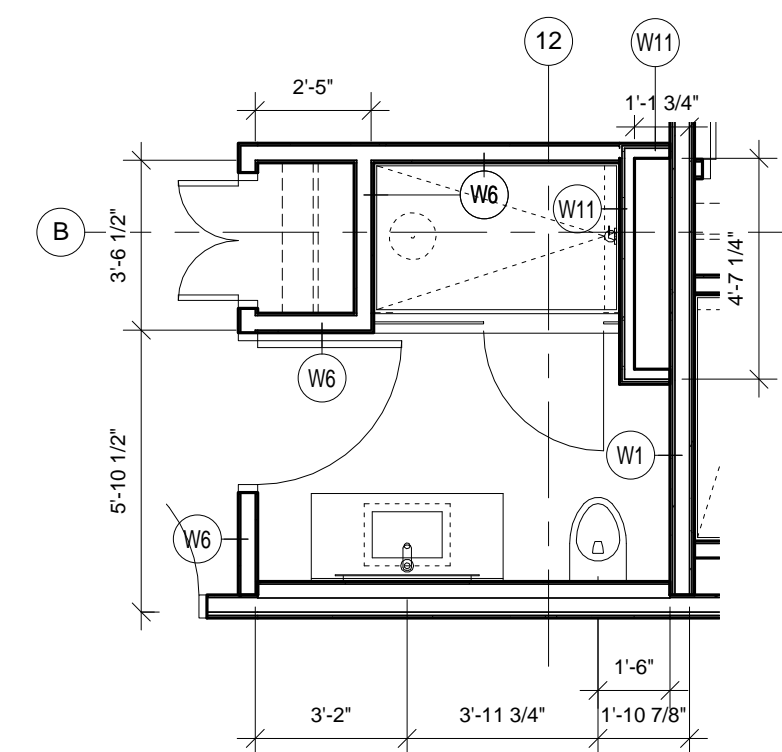
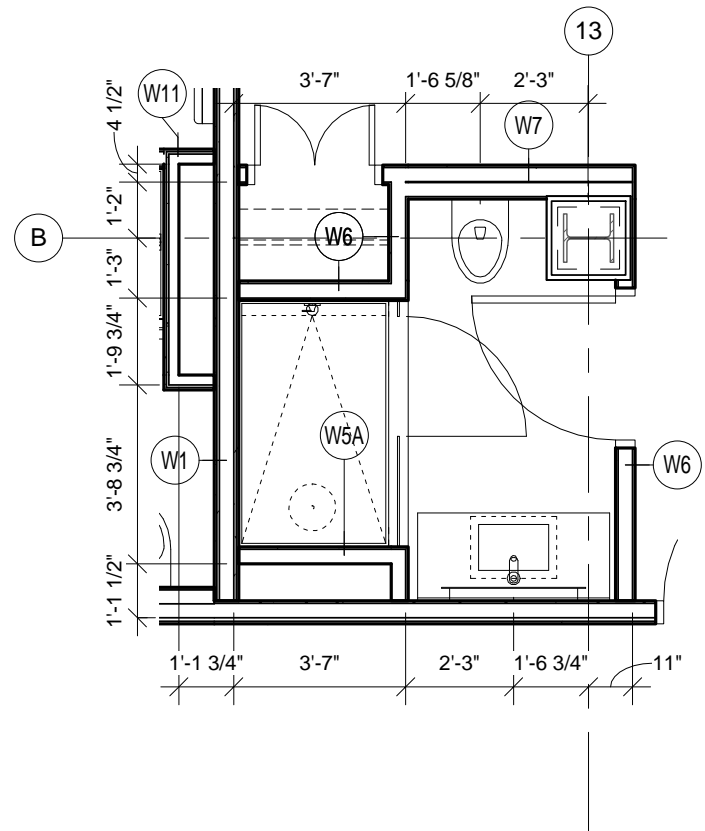


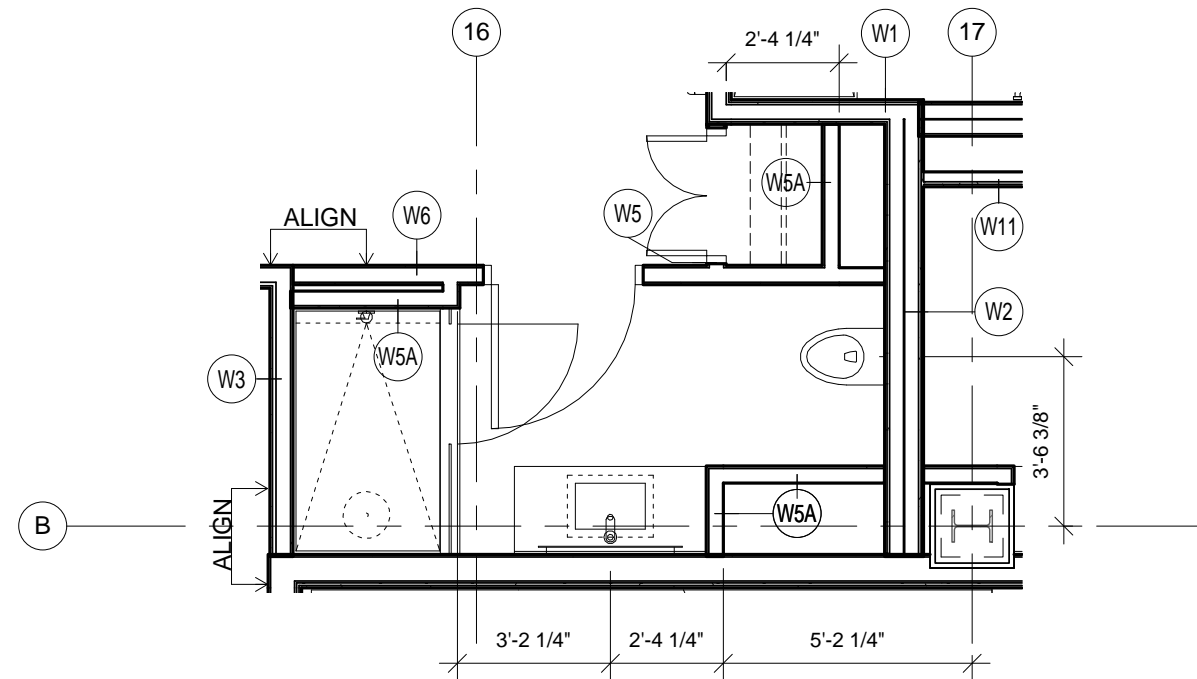
12 ENLARGED BATHROOM - ROOM 309
1/4" = 1'-0"



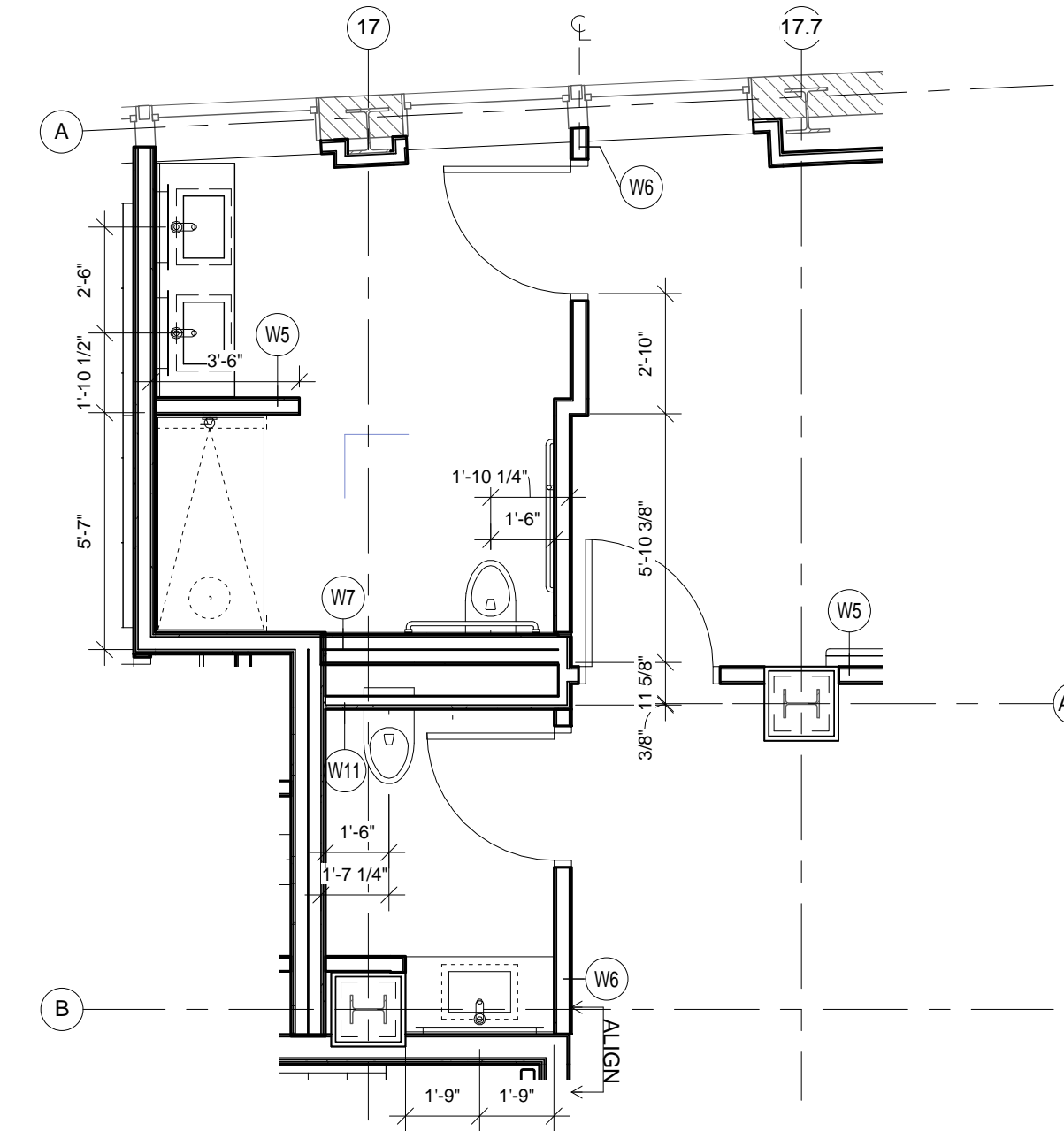
8 ENLARGED BATHROOM - ROOM 211-711
1/4" = 1'-0"



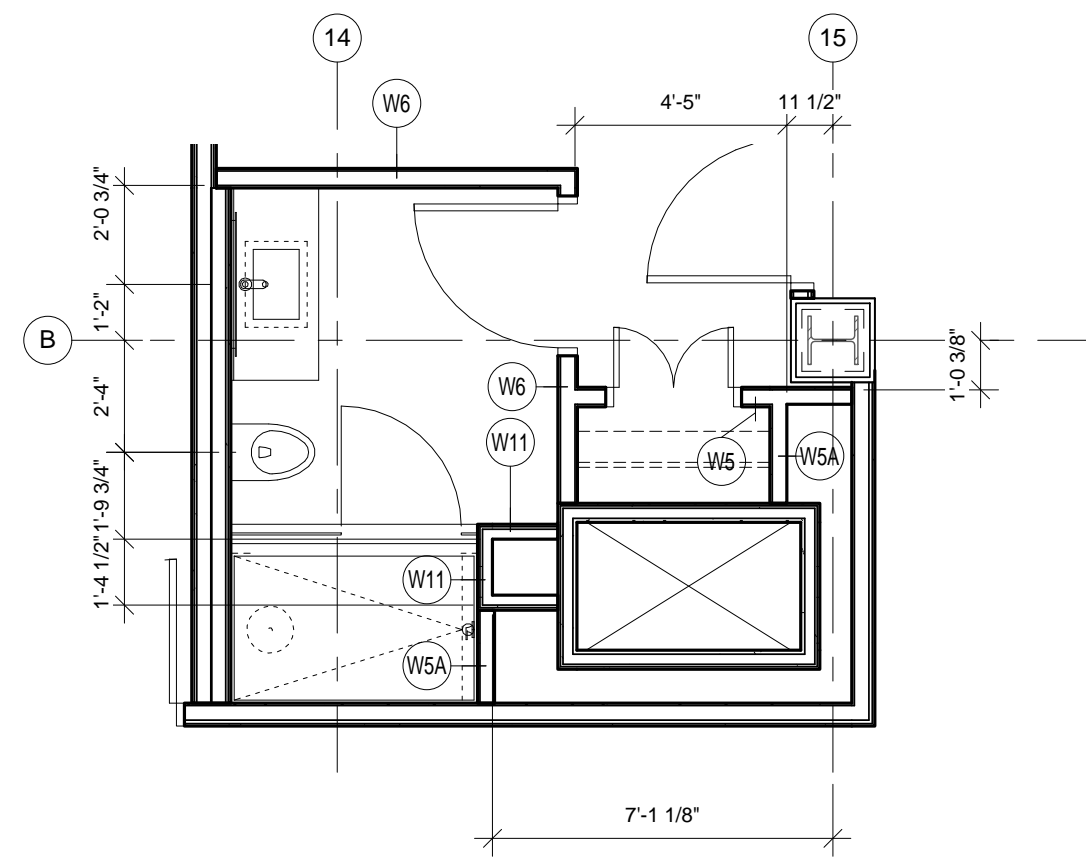
11 ENLARGED BATHROOM - ROOM 209, 409 - 709
1/4" = 1'-0"



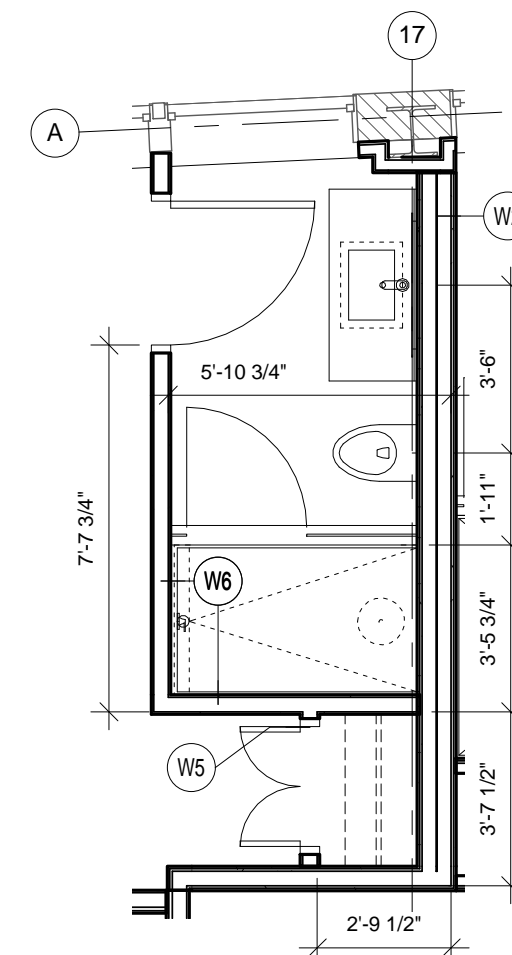
7 ENLARGED BATHROOM - ROOM 605
1/4" = 1'-0"



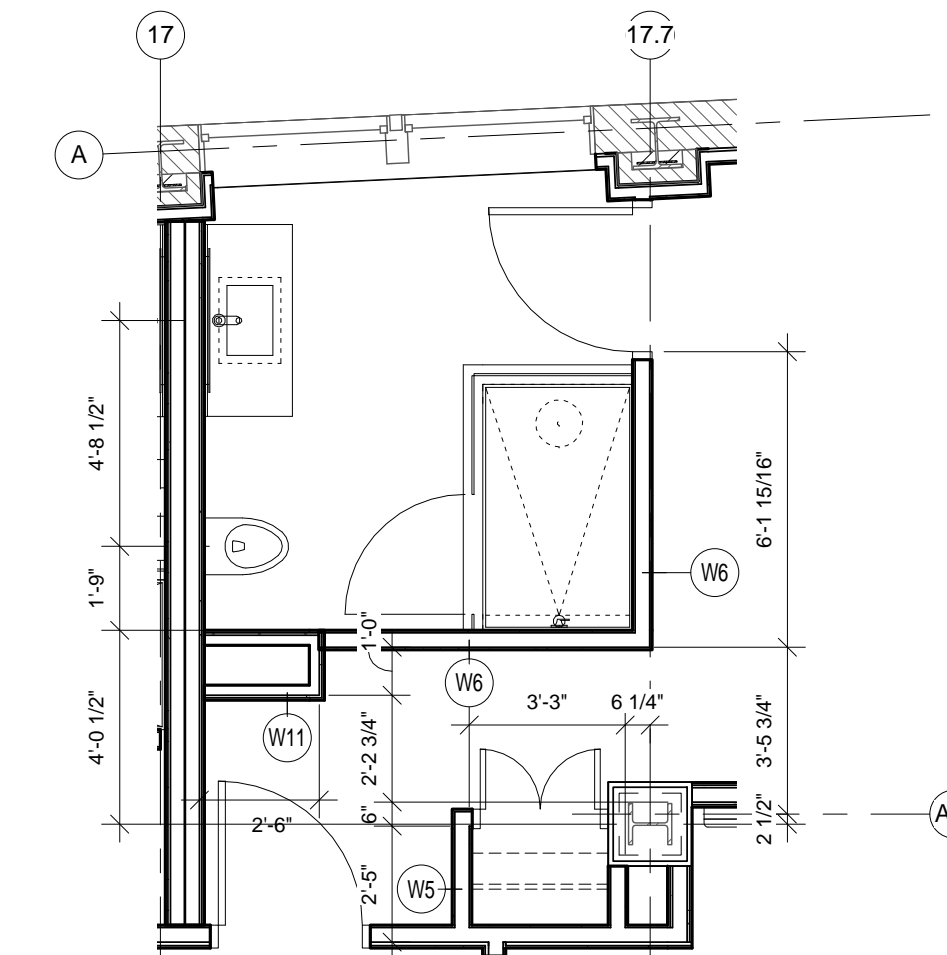
3 ENLARGED BATHROOM - ROOM 601
1/4" = 1'-0"



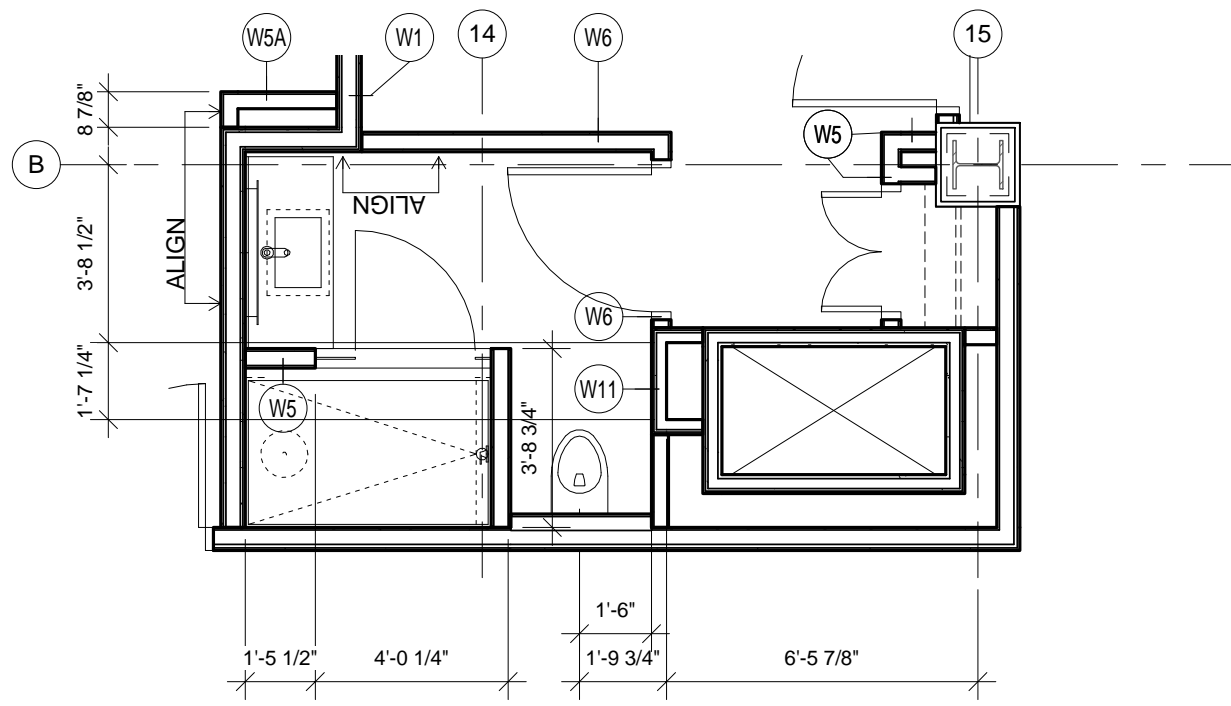
10 ENLARGED BATHROOM - ROOM 307
1/4" = 1'-0"



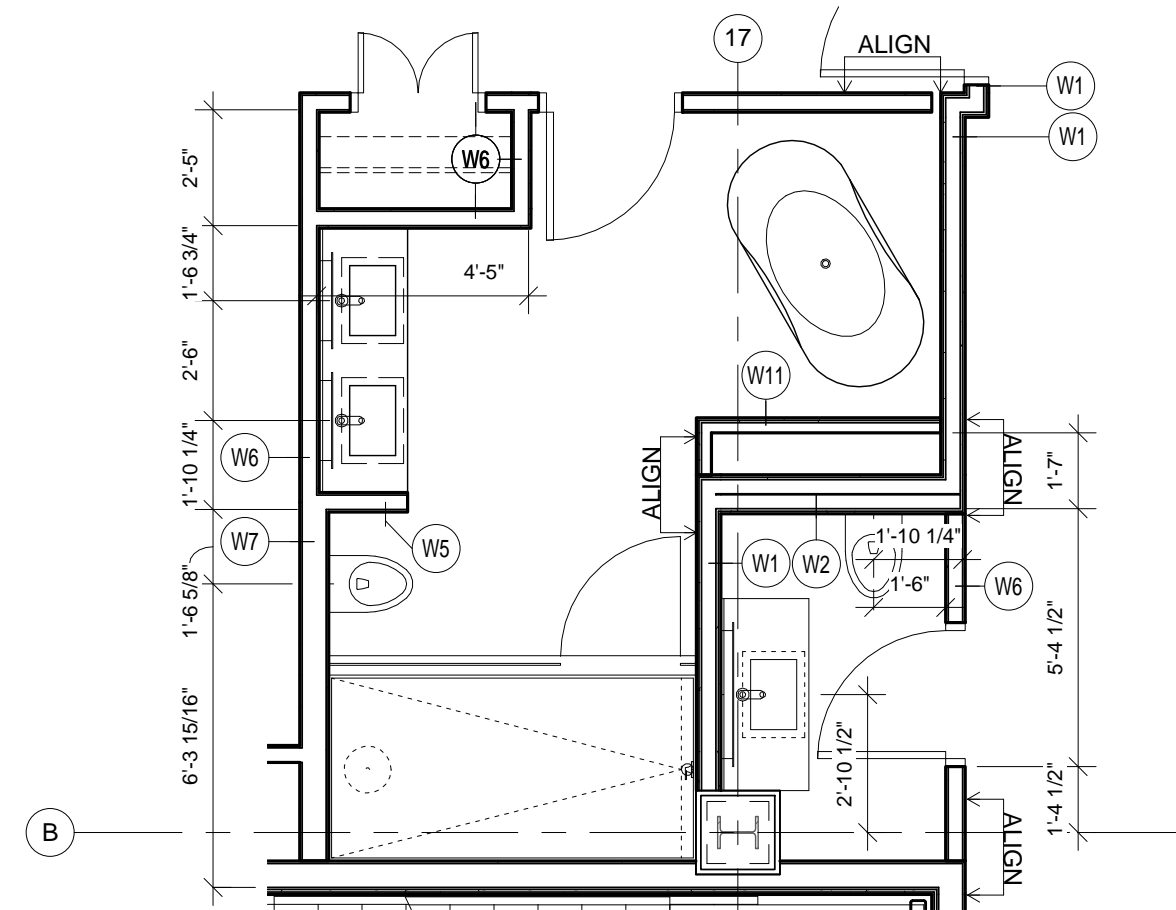
6 ENLARGED BATHROOM - ROOM 305-505
1/4" = 1'-0"



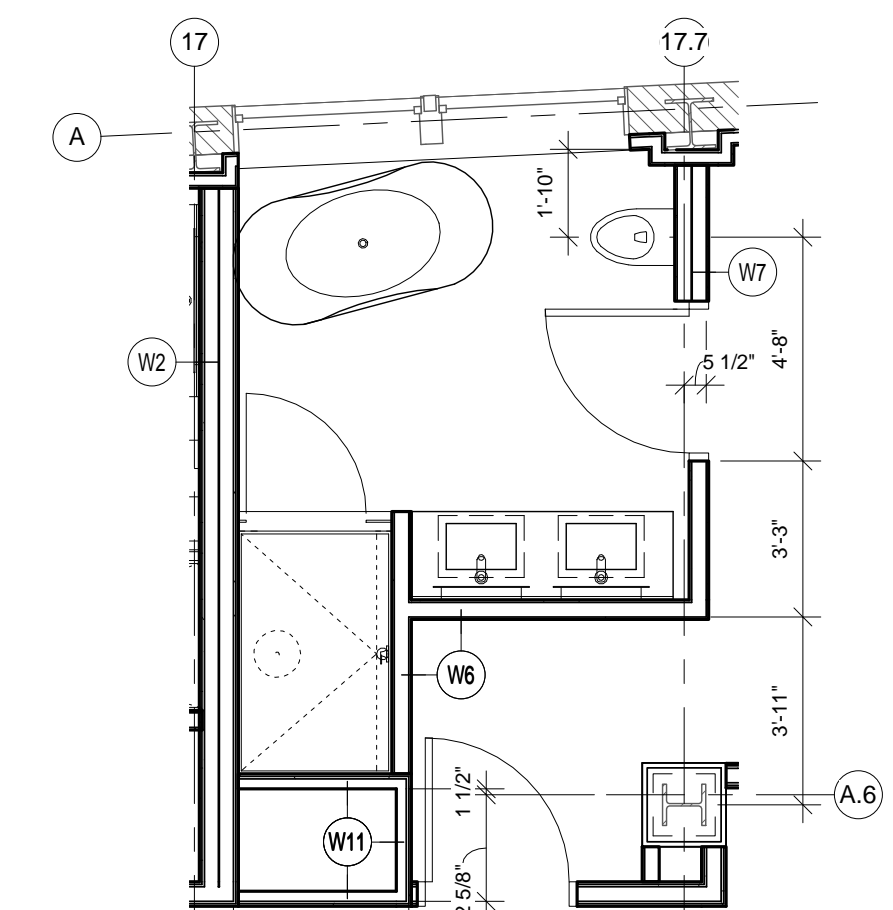
2 ENLARGED BATHROOM - ROOM 303-503
1/4" = 1'-0"



9 ENLARGED BATHROOM - ROOM 207, 407 - 707
1/4" = 1'-0"



5 ENLARGED BATHROOM - ROOM 701
1/4" = 1'-0"



1 ENLARGED BATHROOM - ROOM 201
1/4" = 1'-0"

Prepared For:
119 Development, LLC
P.O. Box 7486
Portland, ME 04112

Consultant:
ARCHETYPE Architects
48 Union Wharf Portland, Maine 04101
(207) 772-6022 Fax (207) 772-4056

Project:
PRESS HOTEL
390 CONGRESS STREET
PORTLAND, ME 04101

Revisions:
3 13_10-14 Issue for Bid & Marriott Rev

Date:
14 OCT 13
Scale:
1/4" = 1'-0"
ENLARGED PLAN -
GUESTROOM
BATHROOM

A3.32