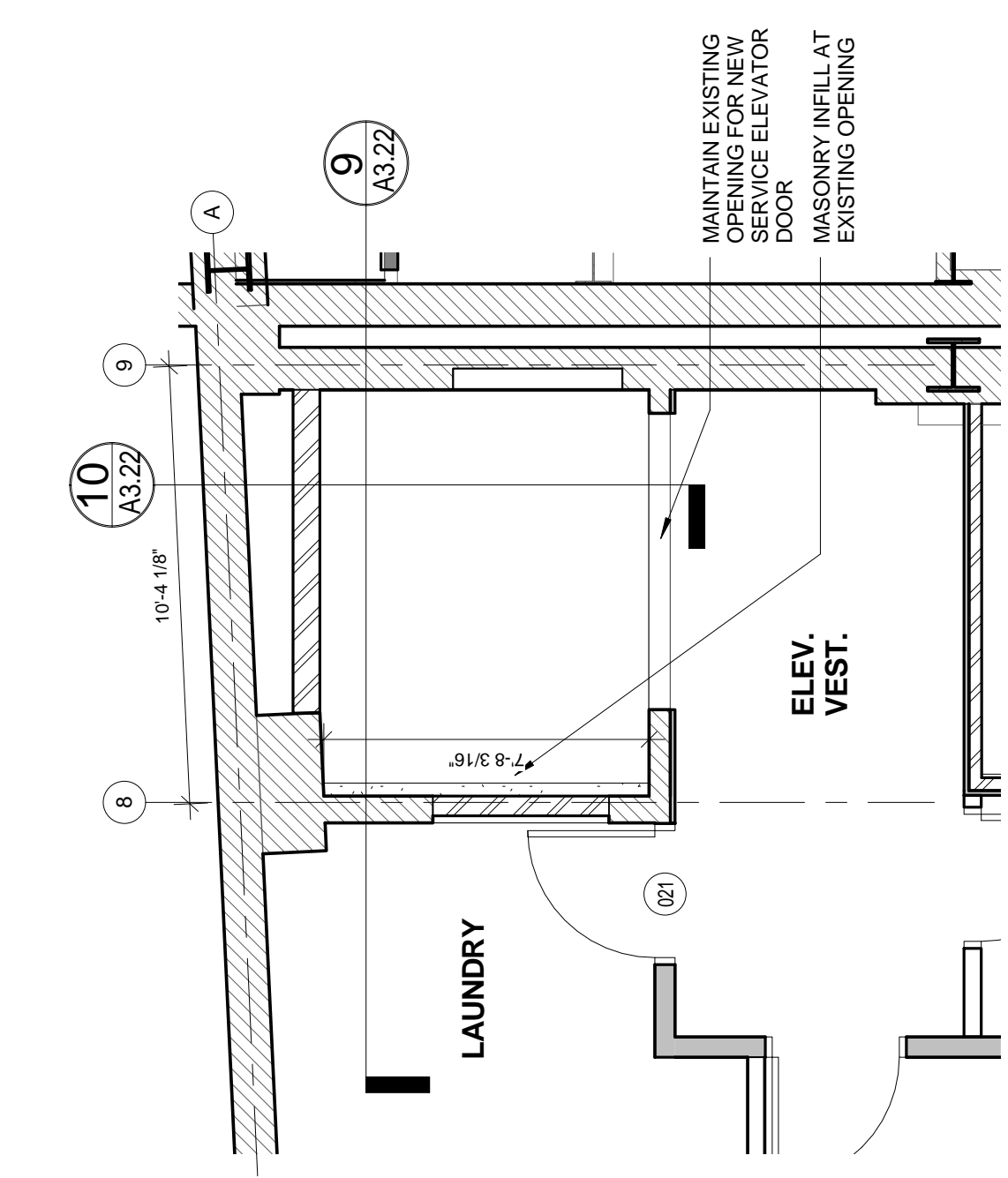
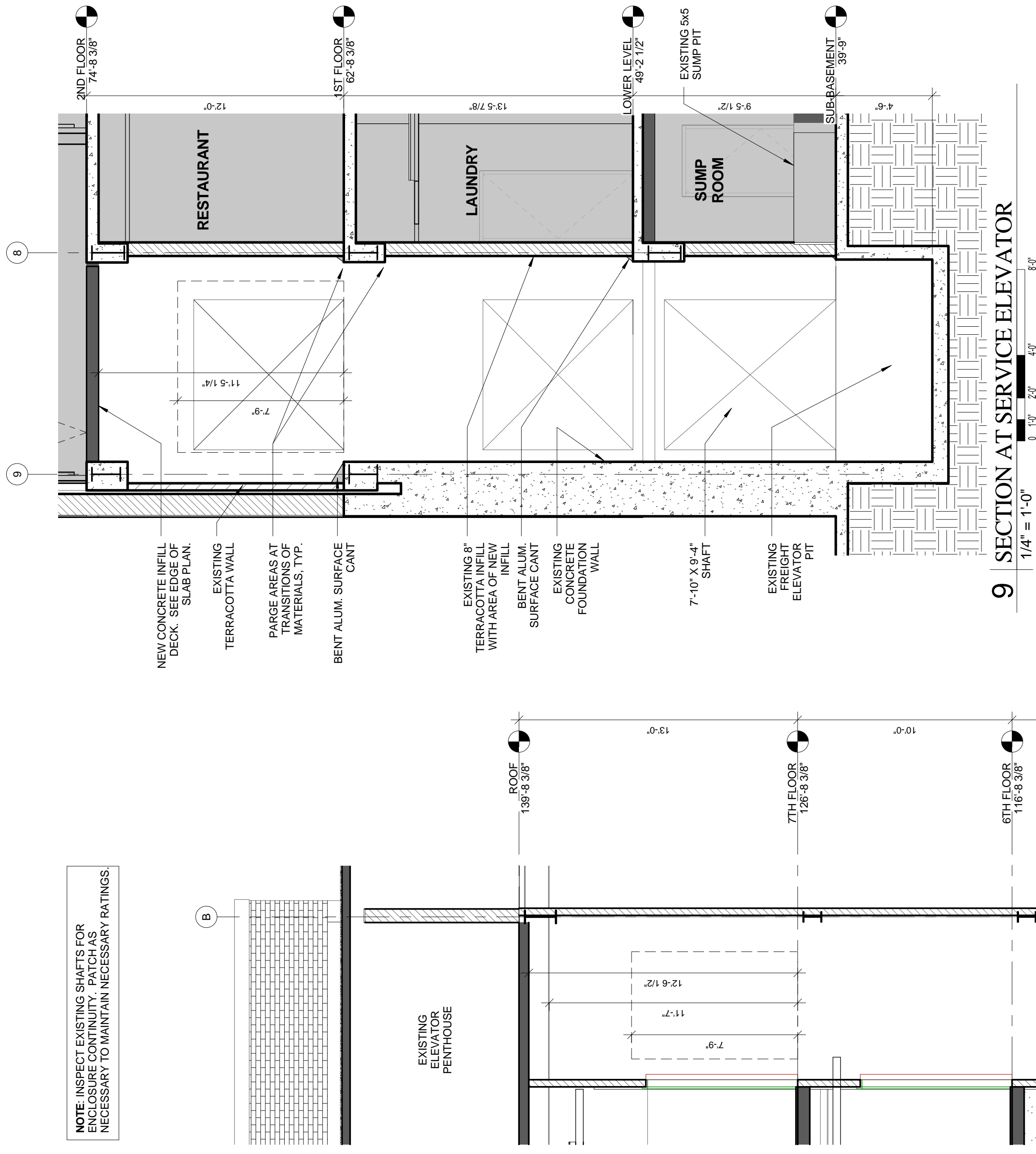
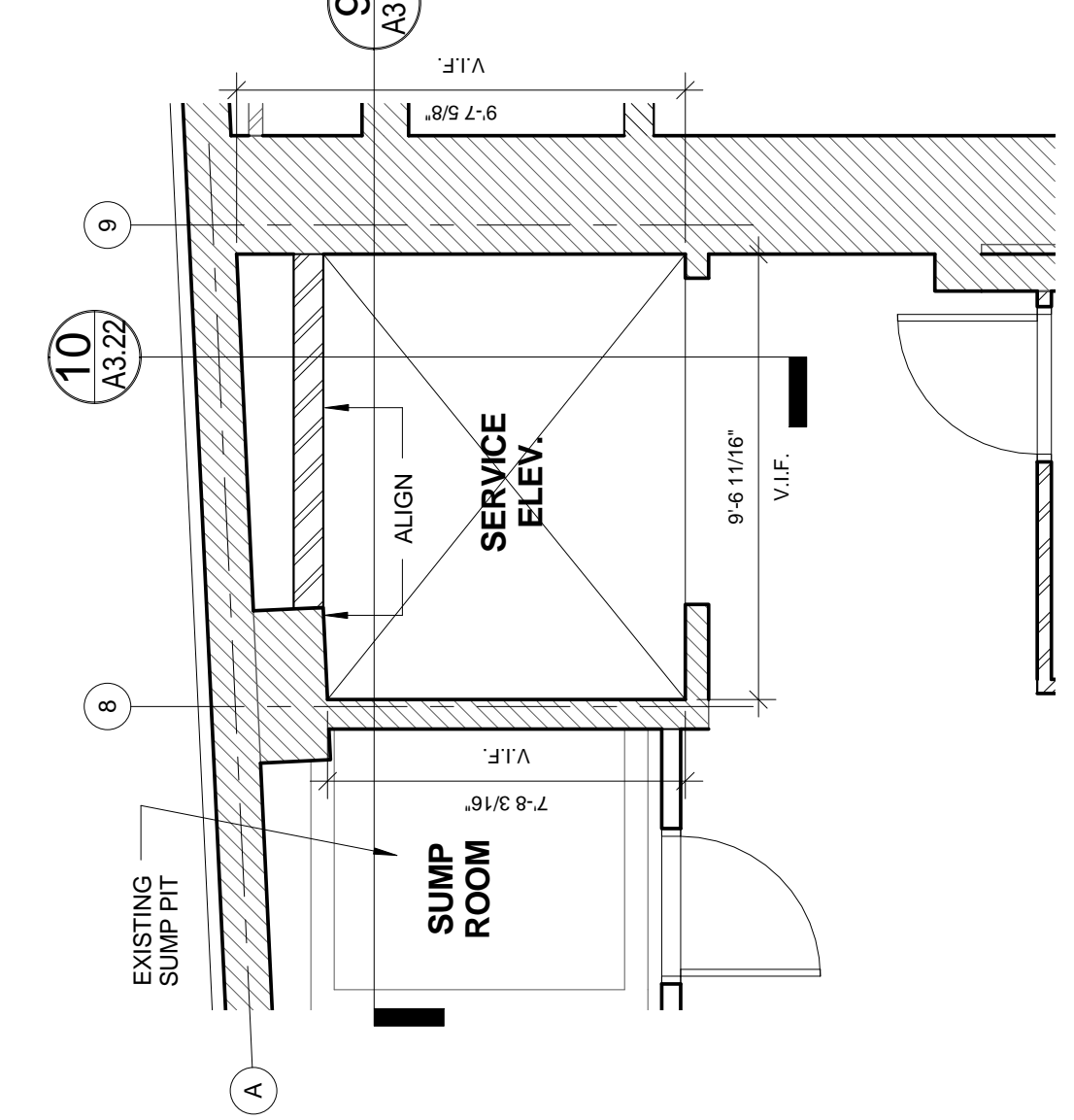


NOTE: INSPECT EXISTING SHAFTS FOR ENCLOSURE CONTINUITY. PATCH AS NECESSARY TO MAINTAIN NECESSARY RATINGS.

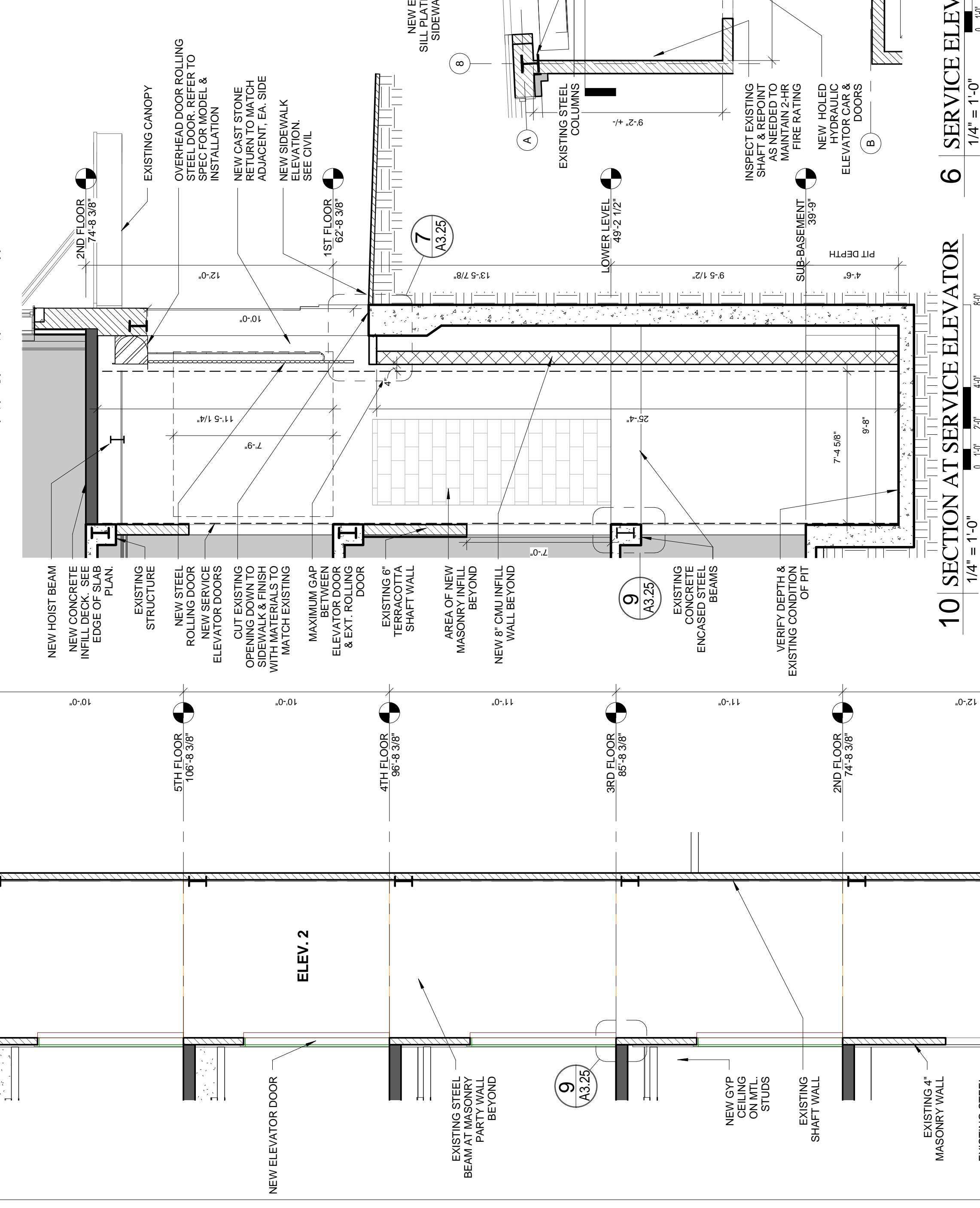


7 SERVICE ELEV. PLAN AT BASEMENT
1/4" = 1'-0"

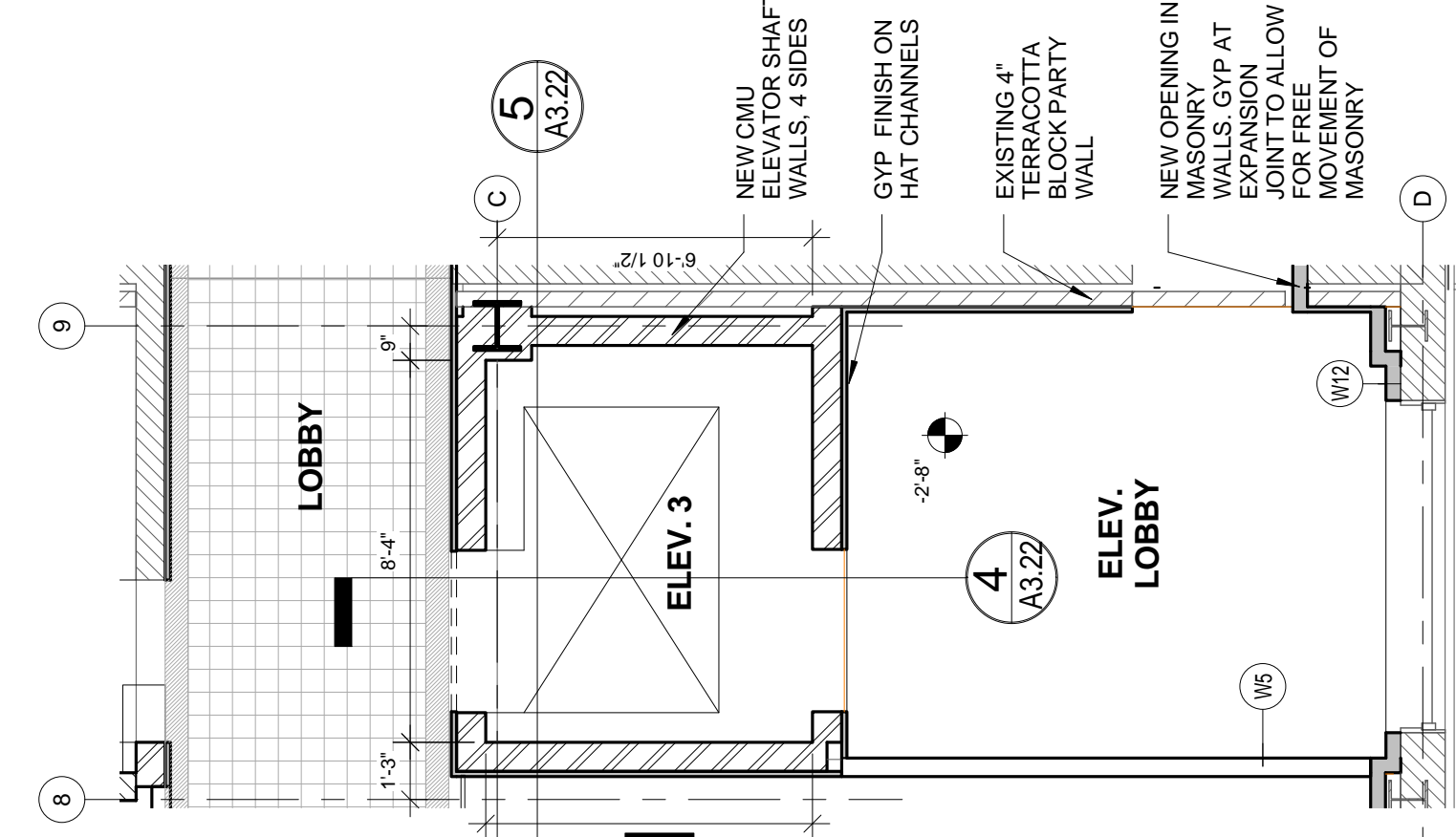


8 SERVICE ELEV. PLAN AT SUB-BASEMENT
1/4" = 1'-0"

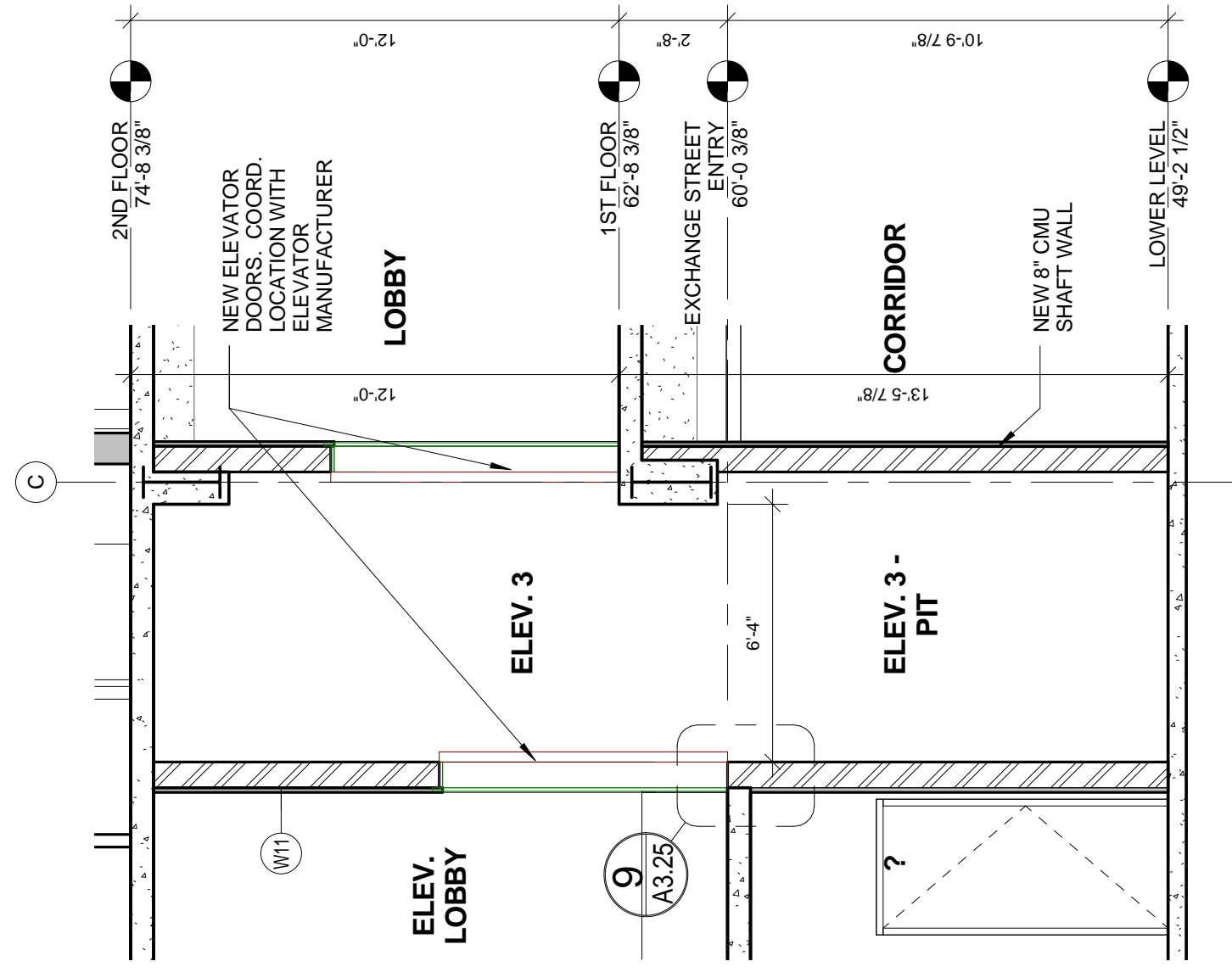
9 SECTION AT SERVICE ELEVATOR
1/4" = 1'-0"



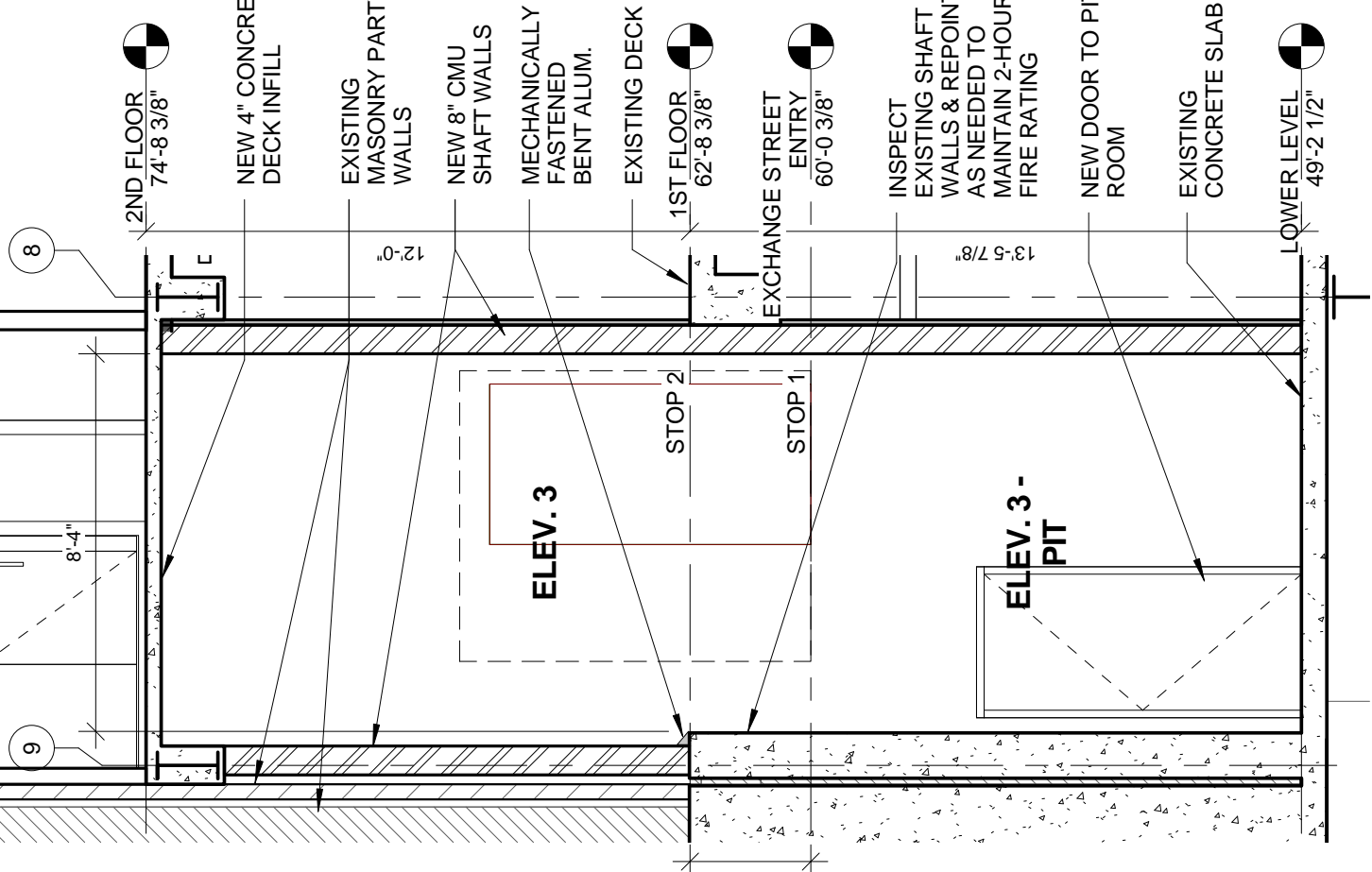
10 SECTION AT SERVICE ELEVATOR
1/4" = 1'-0"



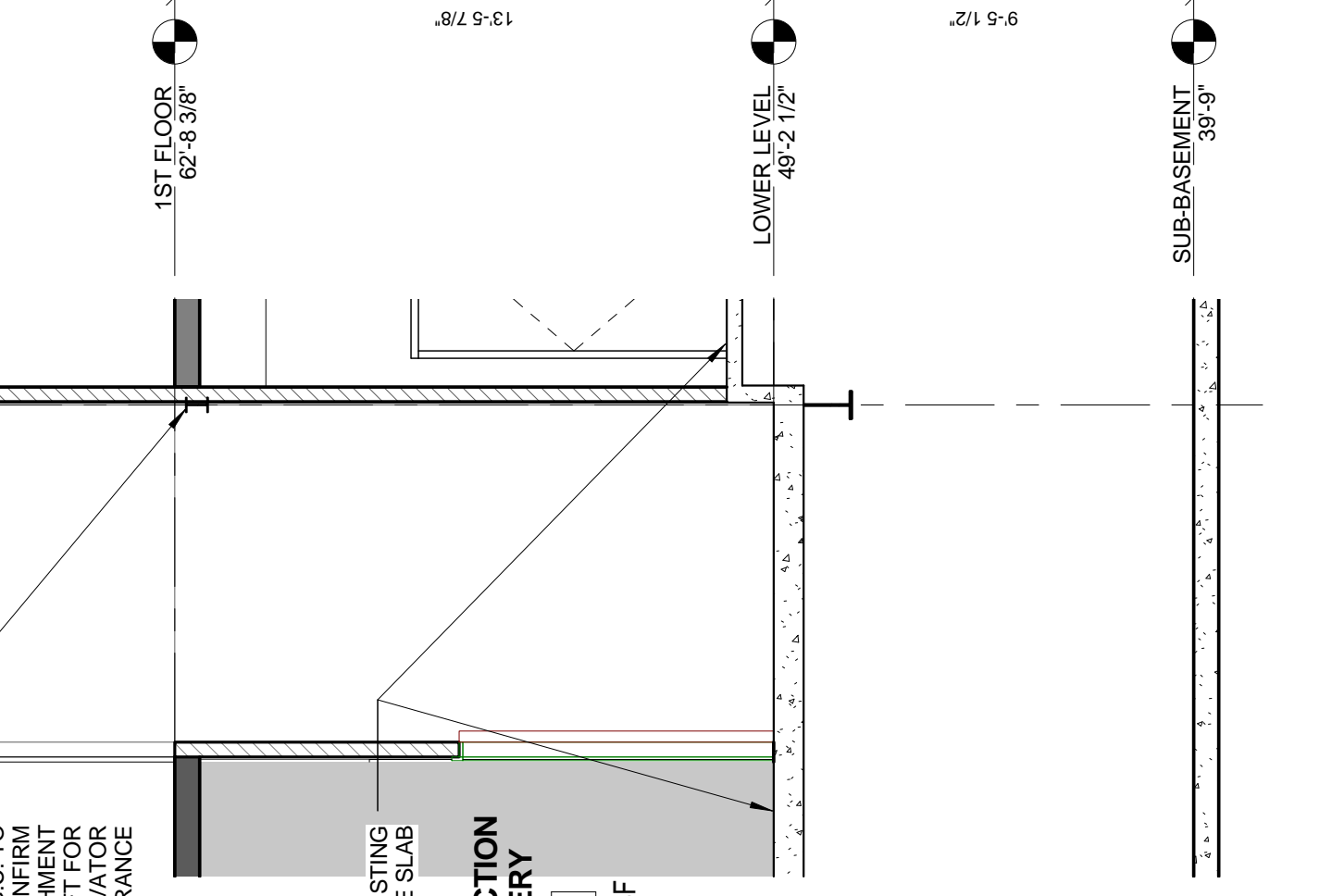
2 ELEVATOR 3 PLAN AT ENTRY
1/4" = 1'-0"



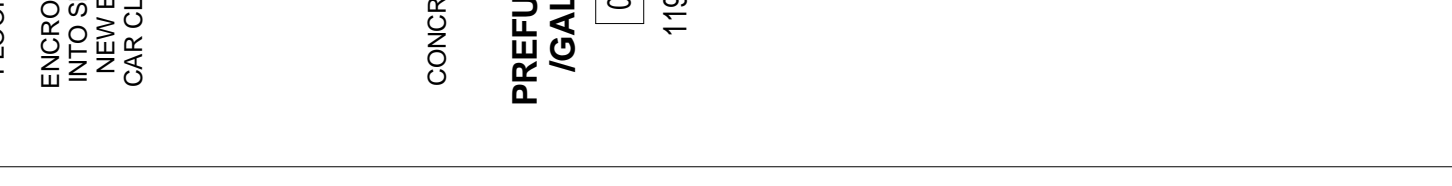
4 SECTION AT ELEVATOR 3
1/4" = 1'-0"



5 SECTION AT ELEVATOR 3
1/4" = 1'-0"



6 SERVICE ELEV. PLAN AT FIRST FLOOR
1/4" = 1'-0"



3 ELEVATOR 3 PLAN AT BASEMENT
1/4" = 1'-0"

Date: 14 OCT 13
Scale: 1/4" = 1'-0"
ELEVATOR PLANS & SECTIONS

Revisions:
2 13_09-09 60% Marriott Sub. & Pric.
3 13_10-14 Issue for Bid & Marriott Revw

Project:
PRESS HOTEL
390 CONGRESS STREET
PORTLAND, ME 04101

Architect:
ARCHETYPE architects
48 Union Wharf Portland, Maine 04101
(207) 772-6022 Fax (207) 772-4056

Prepared For:
119 Development, LLC
P.O. Box 7486
Portland, ME 04112

A3.22