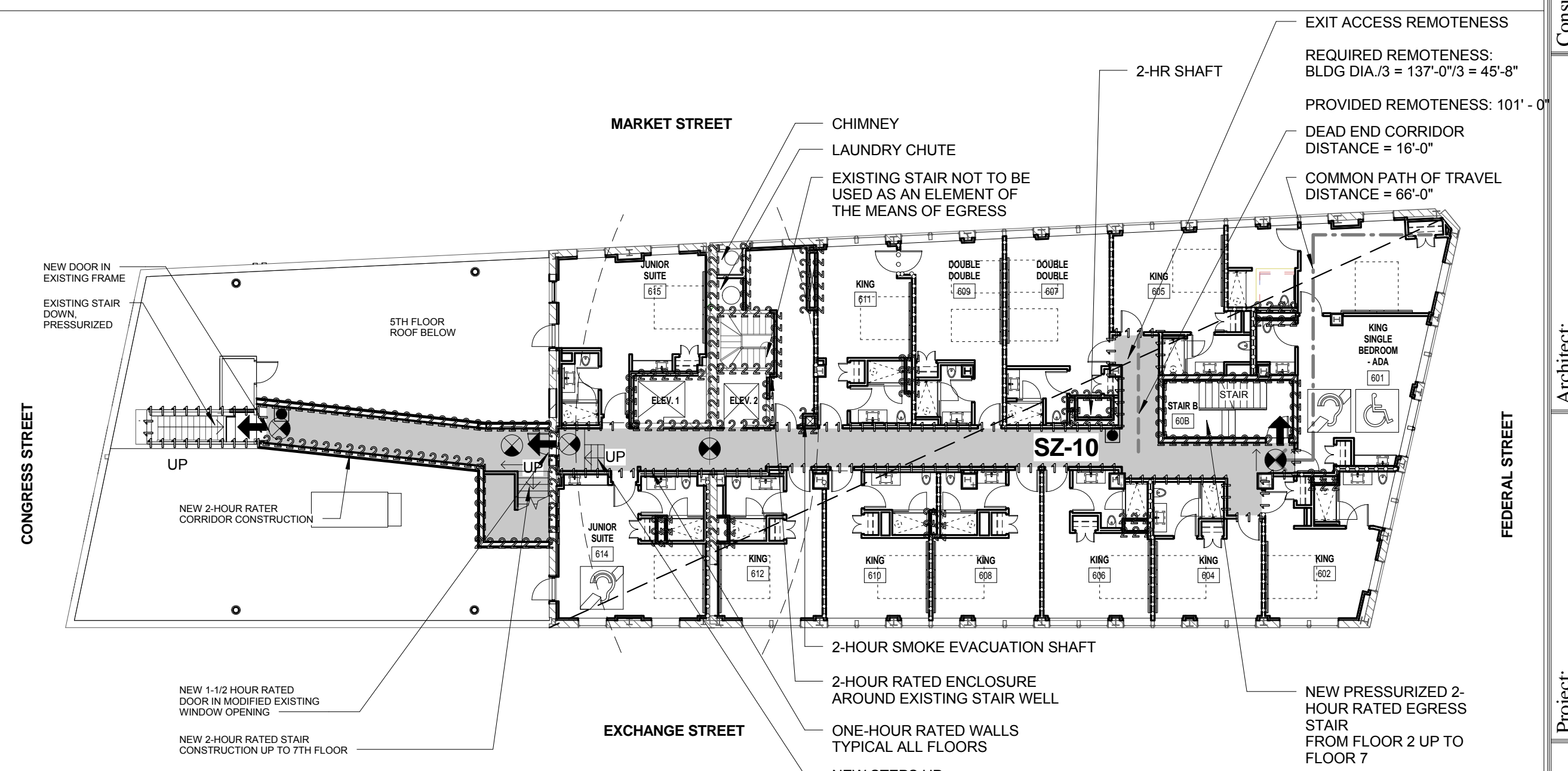
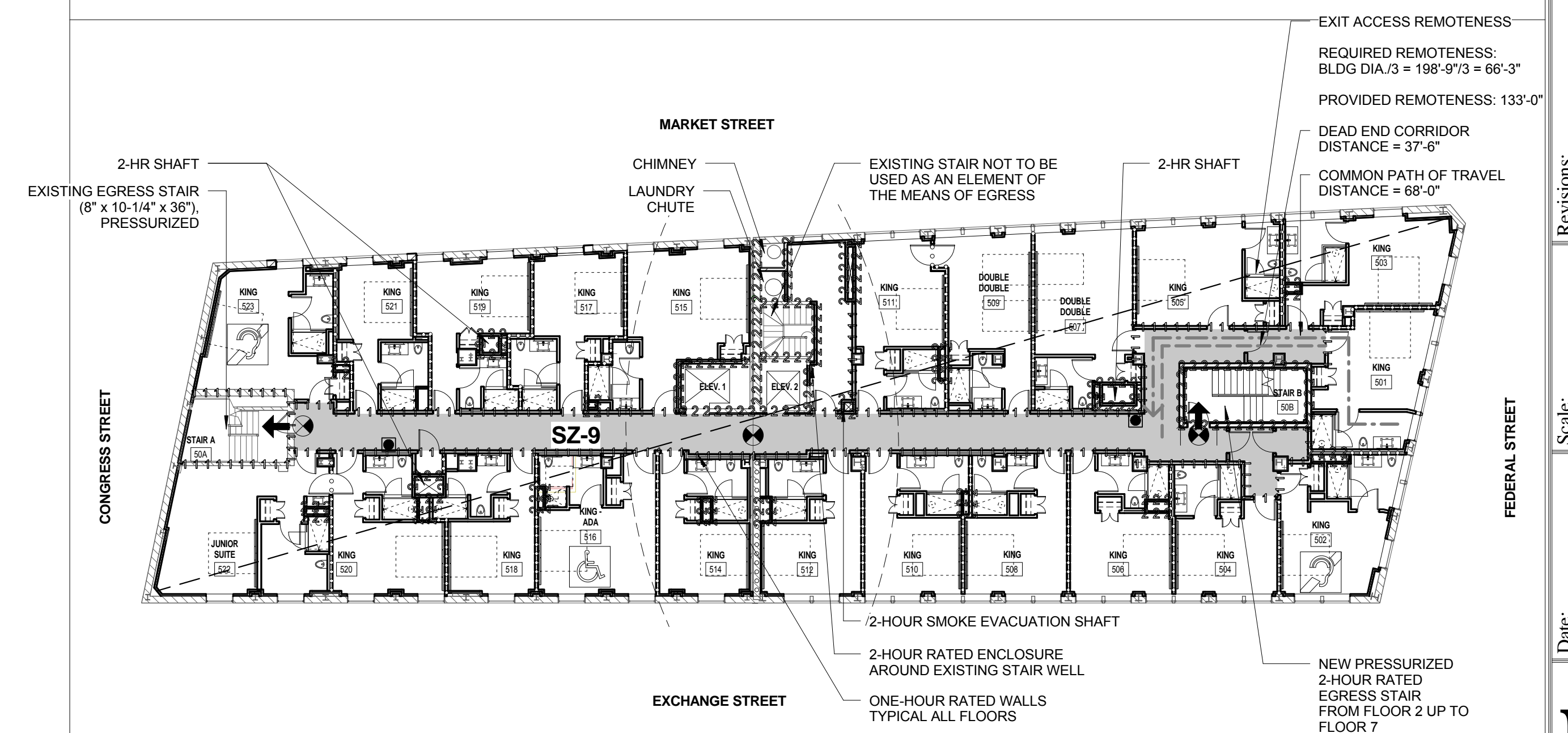


**3 SEVENTH FLOOR - LIFE SAFETY**  
1/16" = 1'-0"



**2 SIXTH FLOOR - LIFE SAFETY**  
1/16" = 1'-0"



**1 FIFTH FLOOR - LIFE SAFETY**  
1/16" = 1'-0"

Prepared For:  
**119 Development, LLC**  
P.O. Box 7486  
Portland, ME 04112

Consultant:  
**ARCHETYPE architects**  
48 Union Wharf Portland, Maine 04101  
(207) 772-6022 Fax (207) 772-4056

Project:  
**PRESS HOTEL**  
390 CONGRESS STREET  
PORTLAND, ME 04101

Revisions:  
1 13\_07-01 30% Marriott Submission  
2 13\_10-14 Issue for Bid & Marriott Rev  
3

Date: 14 OCT 13  
Scale: 1/16" = 1'-0"  
**LIFE SAFETY PLANS - 5TH TO 7TH FLOORS**

**LS1.2**