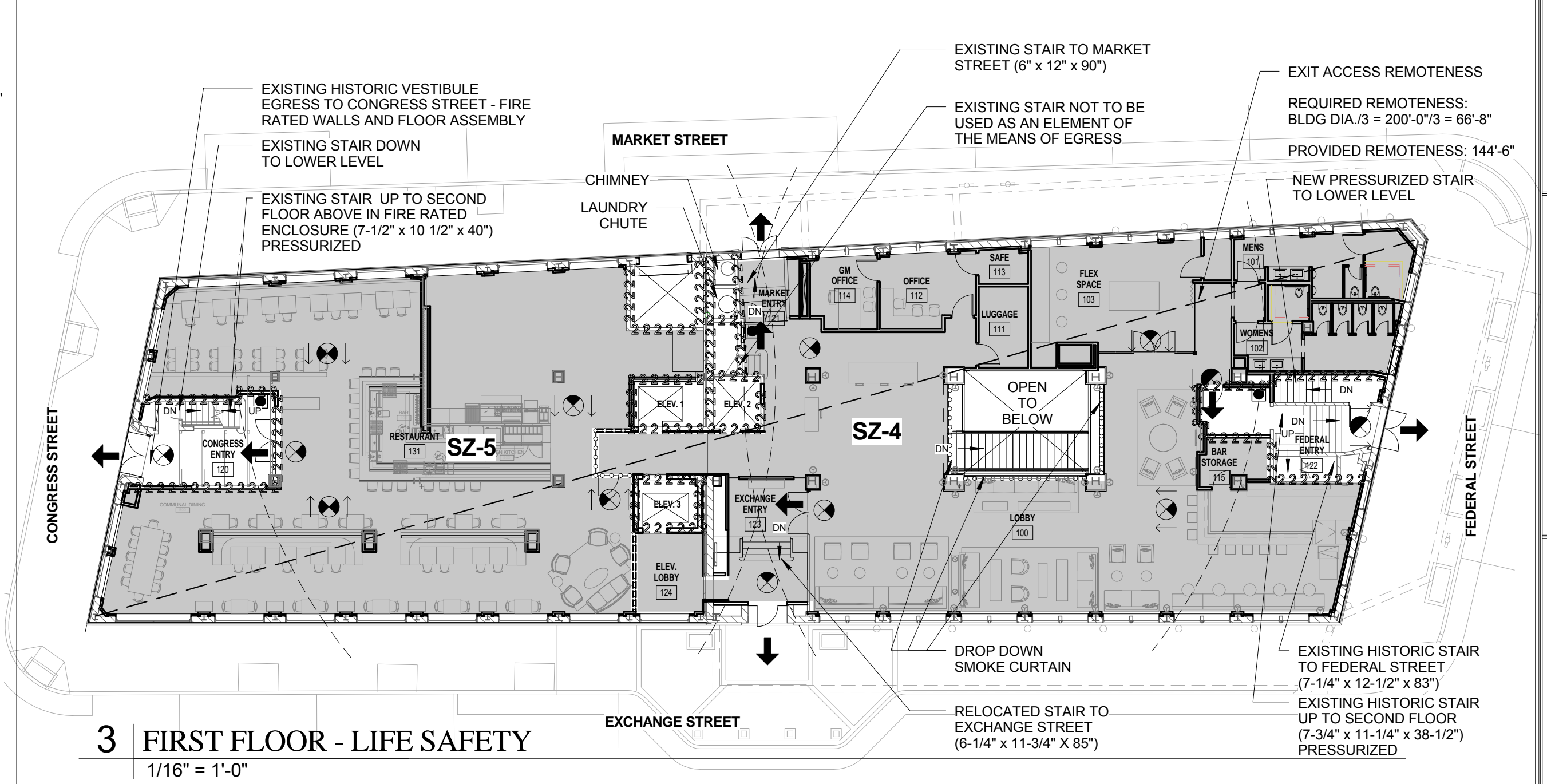
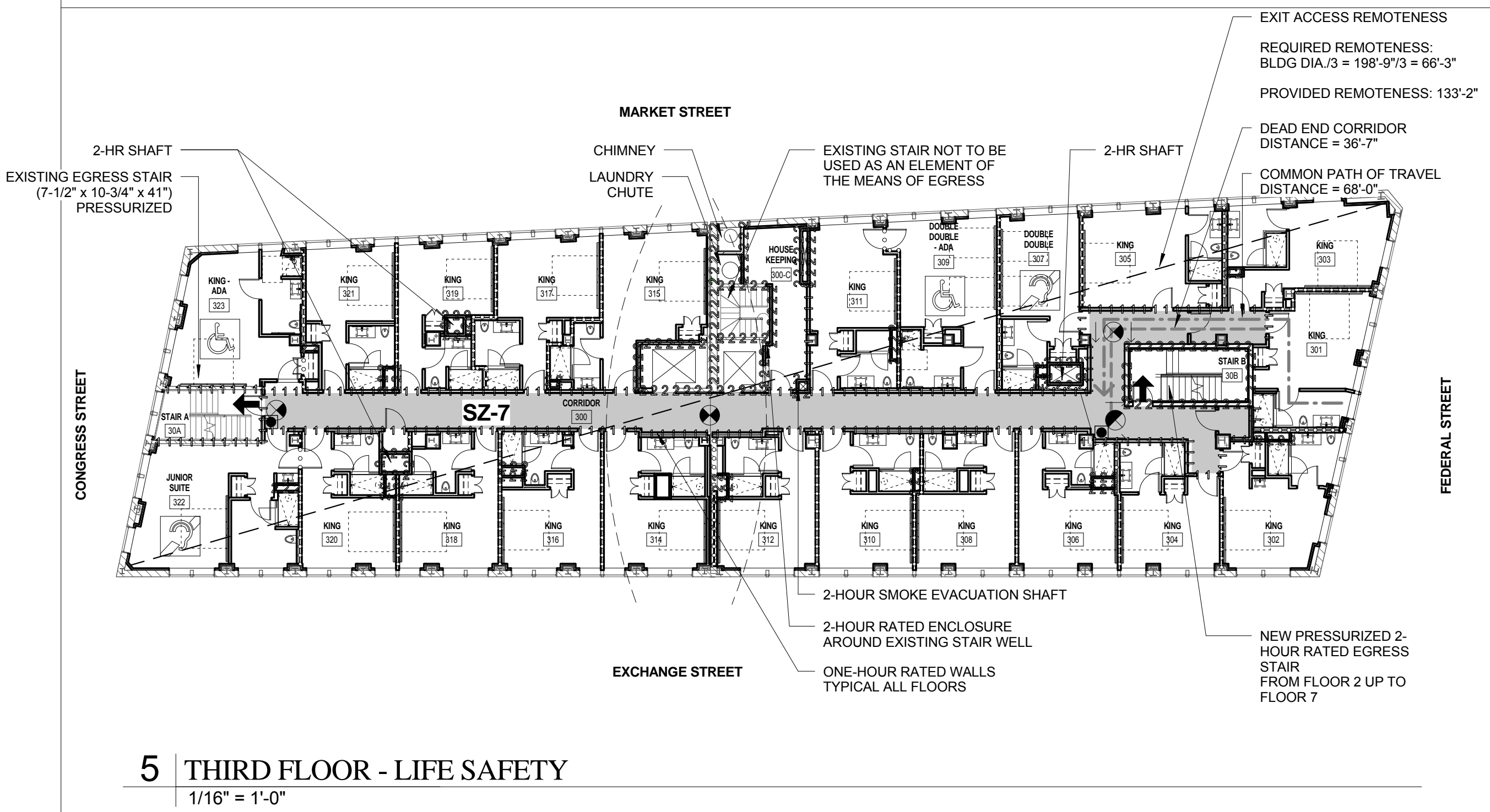


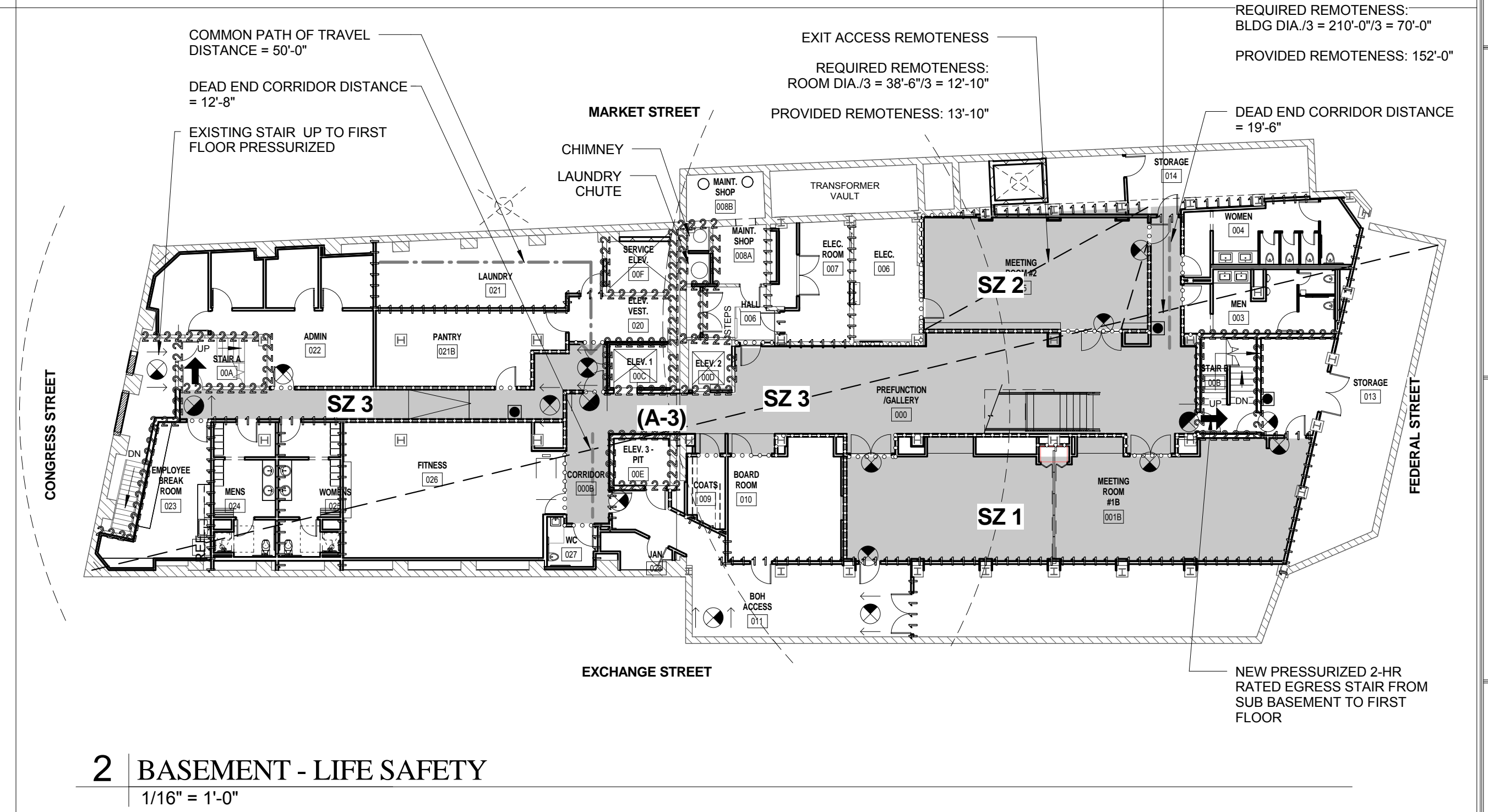
6 FOURTH FLOOR - LIFE SAFETY
1/16" = 1'-0"



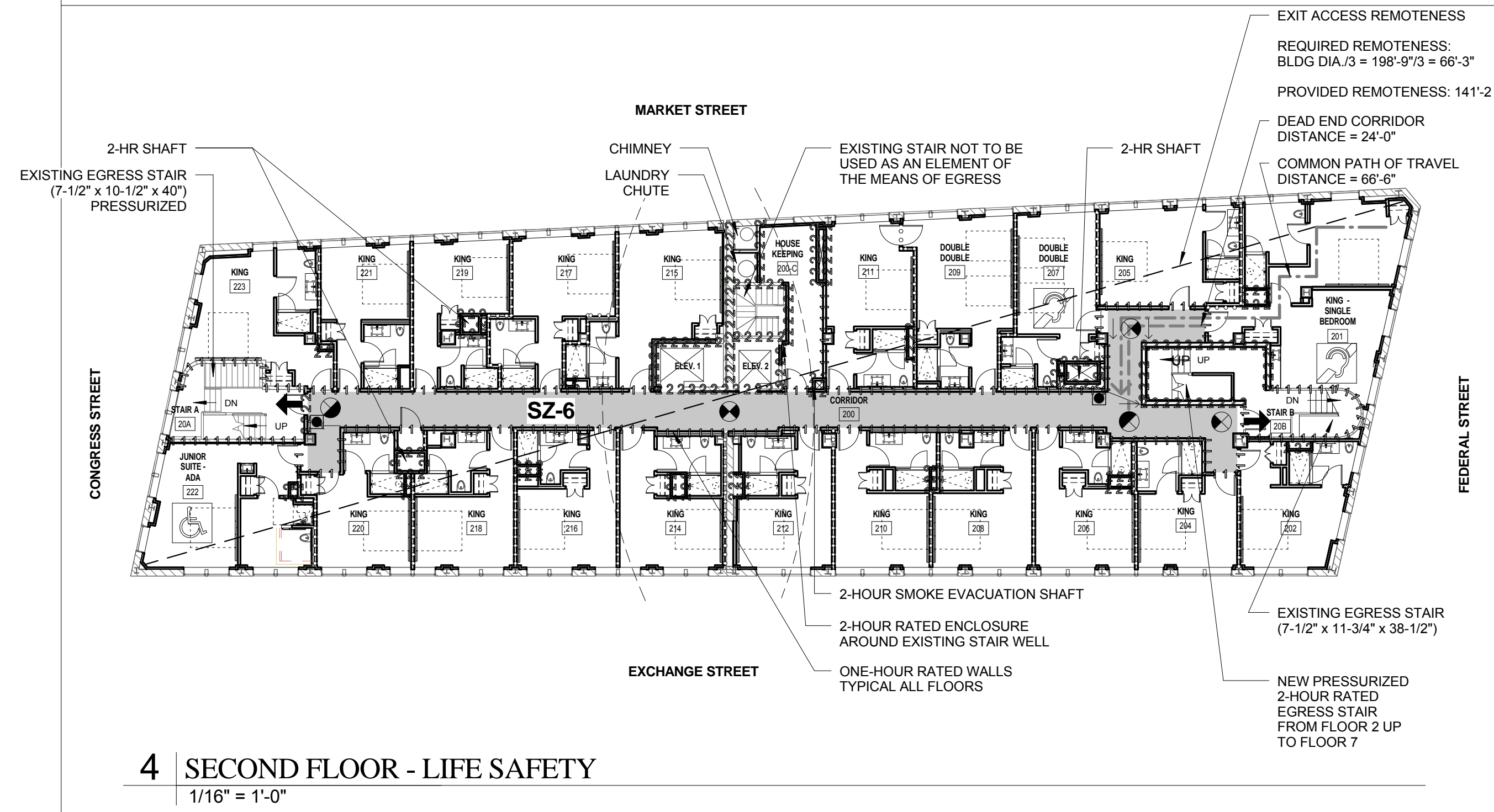
3 FIRST FLOOR - LIFE SAFETY
1/16" = 1'-0"



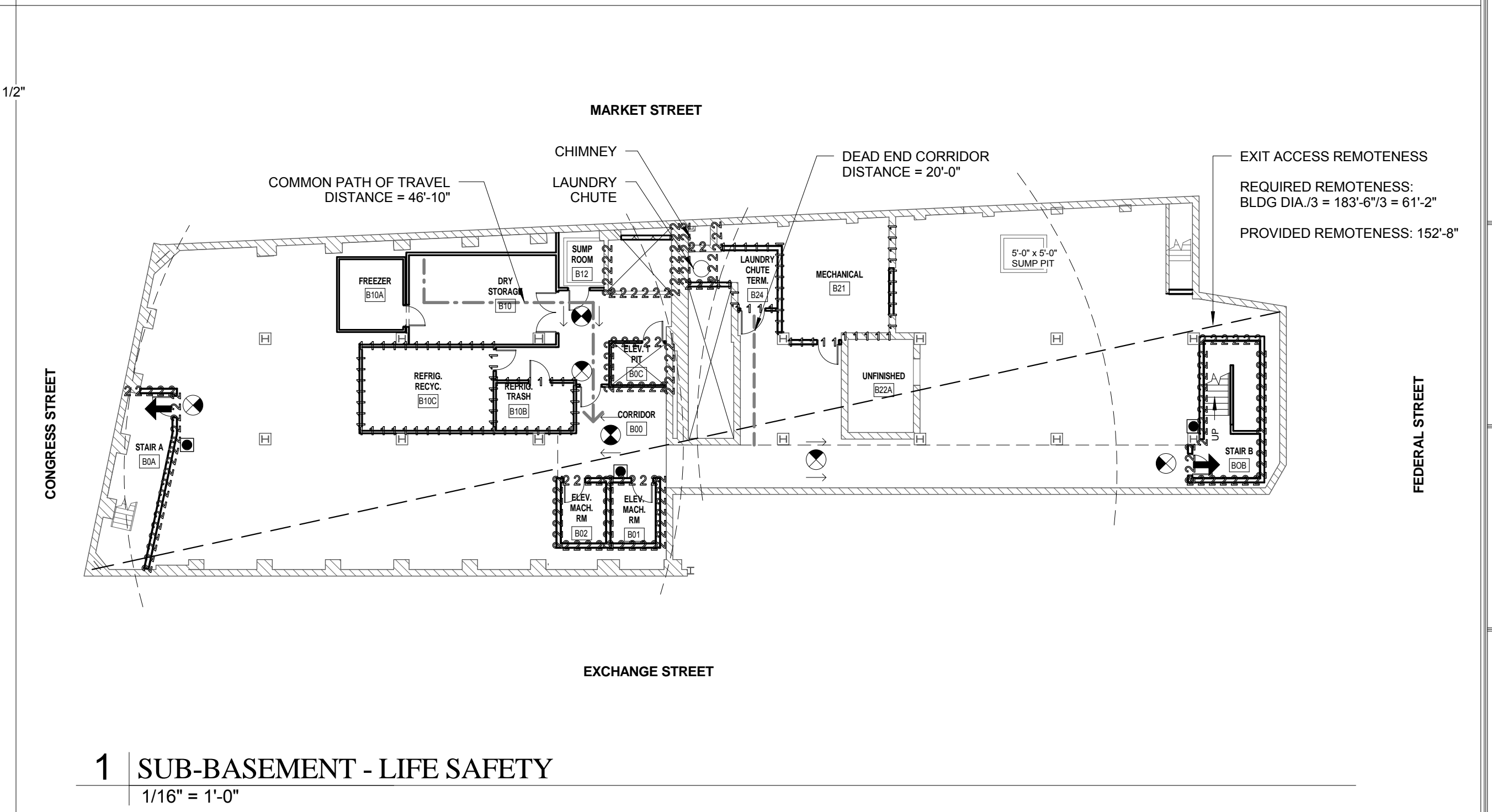
5 THIRD FLOOR - LIFE SAFETY
1/16" = 1'-0"



2 BASEMENT - LIFE SAFETY
1/16" = 1'-0"



4 SECOND FLOOR - LIFE SAFETY
1/16" = 1'-0"



1 SUB-BASEMENT - LIFE SAFETY
1/16" = 1'-0"

Prepared For: **119 Development, LLC**
P.O. Box 7486
Portland, ME 04112

Consultant: **ARCHETYPE architects**
48 Union Wharf Portland, Maine 04101
(207) 772-6022 Fax (207) 772-4056

Project: **PRESS HOTEL**
390 CONGRESS STREET
PORTLAND, ME 04101

Revisions:
1 13_07-01 30% Marriott Submission
2 13_10-14 Issue for Bid & Marriott Rev
3 13_10-14

Date: 14 OCT 13
Scale: 1/16" = 1'-0"
LIFE SAFETY PLANS - SUB-BASMT. TO 4TH

LS1.1