

**Baltimore Aircoil Company, Inc.**  
**Cooling Tower Selection Program**

Version: 8.1.3 NA  
 Product data correct as of: November 11, 2013

Project Name:  
 Selection Name:  
 Project State/Province: Tennessee  
 Project Country: United States  
 Date: January 08, 2014

**Model Information**

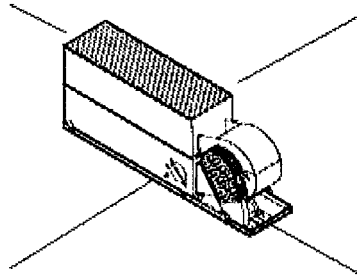
Product Line: Low Profile Series V (VTL) Intake Option: None  
 Model: VTL-272-P Internal Option: None  
 Number of Units: 1 Discharge Option: None  
 Fan Type: Standard Fan External Static Pressure: 0.00 in. H2O  
 Fan Motor: Full Speed, 40.00 BHP/Unit  
 Total Standard Fan Power: (1) 40.00 = 40.00 HP/Unit

Octave band and A-weighted sound pressure levels (Lp) are expressed in decibels (dB) reference 0.0002 microbar. Sound power levels (Lw) are expressed in decibels (dB) reference one picowatt. Octave band 1 has a center frequency of 63 Hertz.

<b>Top</b>		
<b>Sound Pressure (dB)</b>		
Octave Band	Distance	
	5 ft.	50 ft.
1	81	67
2	83	67
3	80	63
4	80	65
5	79	63
6	76	61
7	73	58
8	71	53
A-wgtd	<b>84</b>	<b>68</b>

<b>Back</b>		
<b>Sound Pressure (dB)</b>		
Octave Band	Distance	
	5 ft.	50 ft.
1	78	71
2	64	67
3	73	62
4	69	57
5	65	57
6	60	53
7	59	55
8	54	45
A-wgtd	<b>71</b>	<b>63</b>

<b>End</b>		
<b>Sound Pressure (dB)</b>		
Octave Band	Distance	
	5 ft.	50 ft.
1	80	69
2	75	67
3	76	67
4	78	64
5	77	64
6	75	62
7	73	61
8	68	55
A-wgtd	<b>82</b>	<b>69</b>



<b>End</b>		
<b>Sound Pressure (dB)</b>		
Octave Band	Distance	
	5 ft.	50 ft.
1	80	69
2	75	67
3	76	67
4	78	64
5	77	64
6	75	62
7	73	61
8	68	55
A-wgtd	<b>82</b>	<b>69</b>

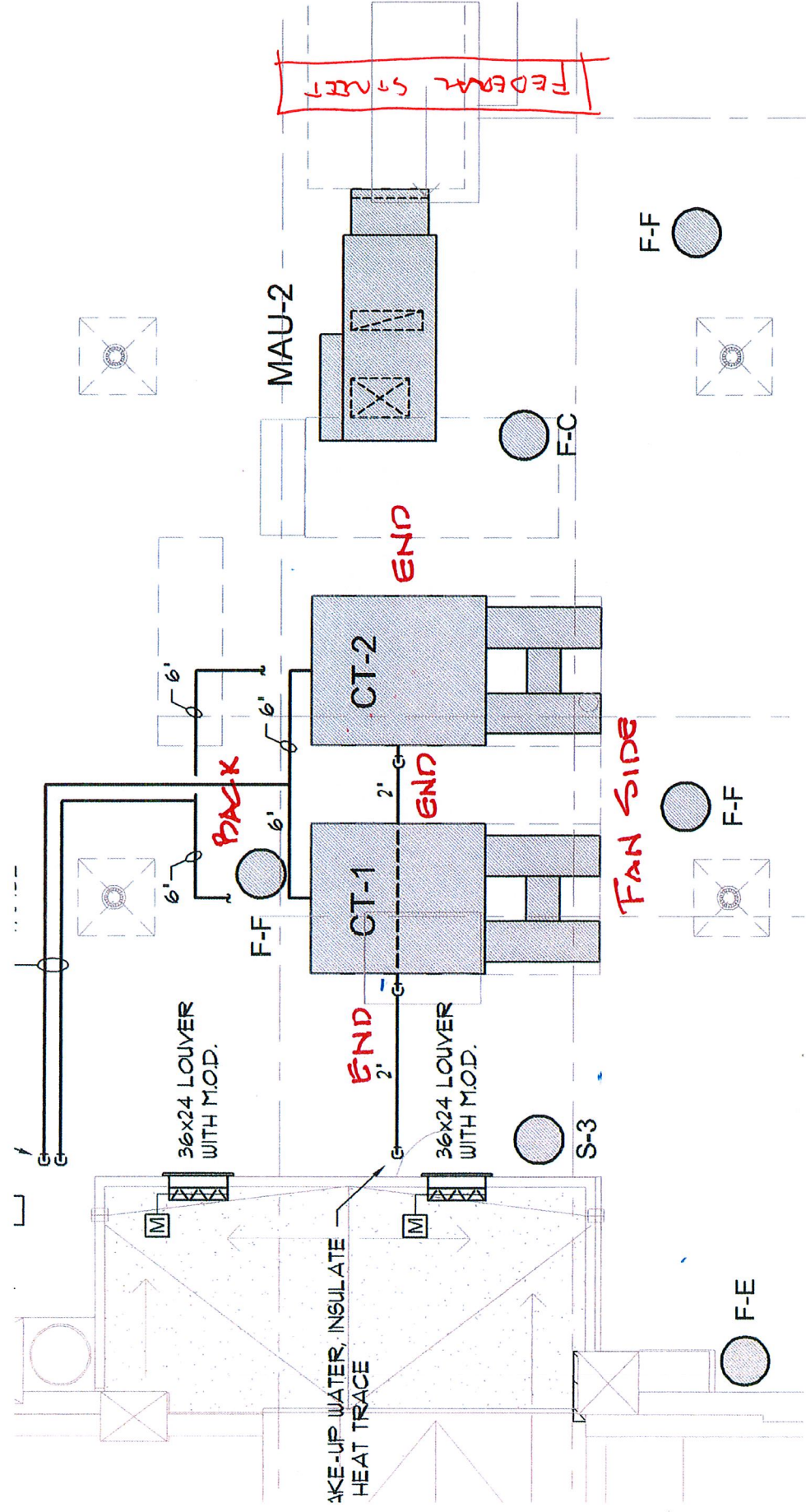
<b>Fan Side</b>		
<b>Sound Pressure (dB)</b>		
Octave Band	Distance	
	5 ft.	50 ft.
1	82	72
2	74	68
3	76	66
4	79	62
5	76	62
6	73	60
7	70	58
8	65	51
A-wgtd	<b>81</b>	<b>67</b>

<b>Sound Power (dB)</b>		
Octave Band	Center Frequency (Hertz)	Lw
1	63	102
2	125	99
3	250	97
4	500	95
5	1000	95
6	2000	93
7	4000	91
8	8000	85

**Note:** The use of frequency inverters (variable frequency drives) can increase sound levels.

COOLING TOWER  
SOUND DATA

MARKET ST



COOLPRESS STREET

EXCHANGE ST

PRESS HOTEL  
1.9.2013