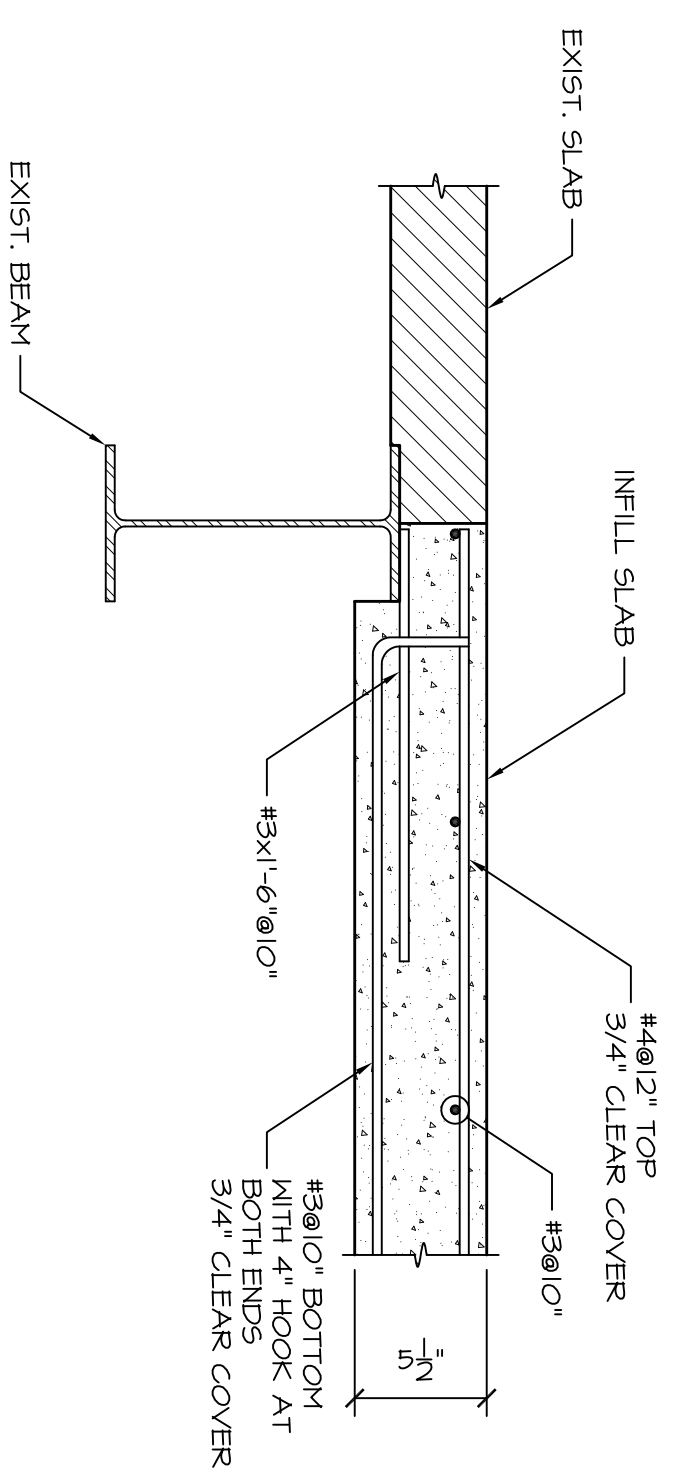
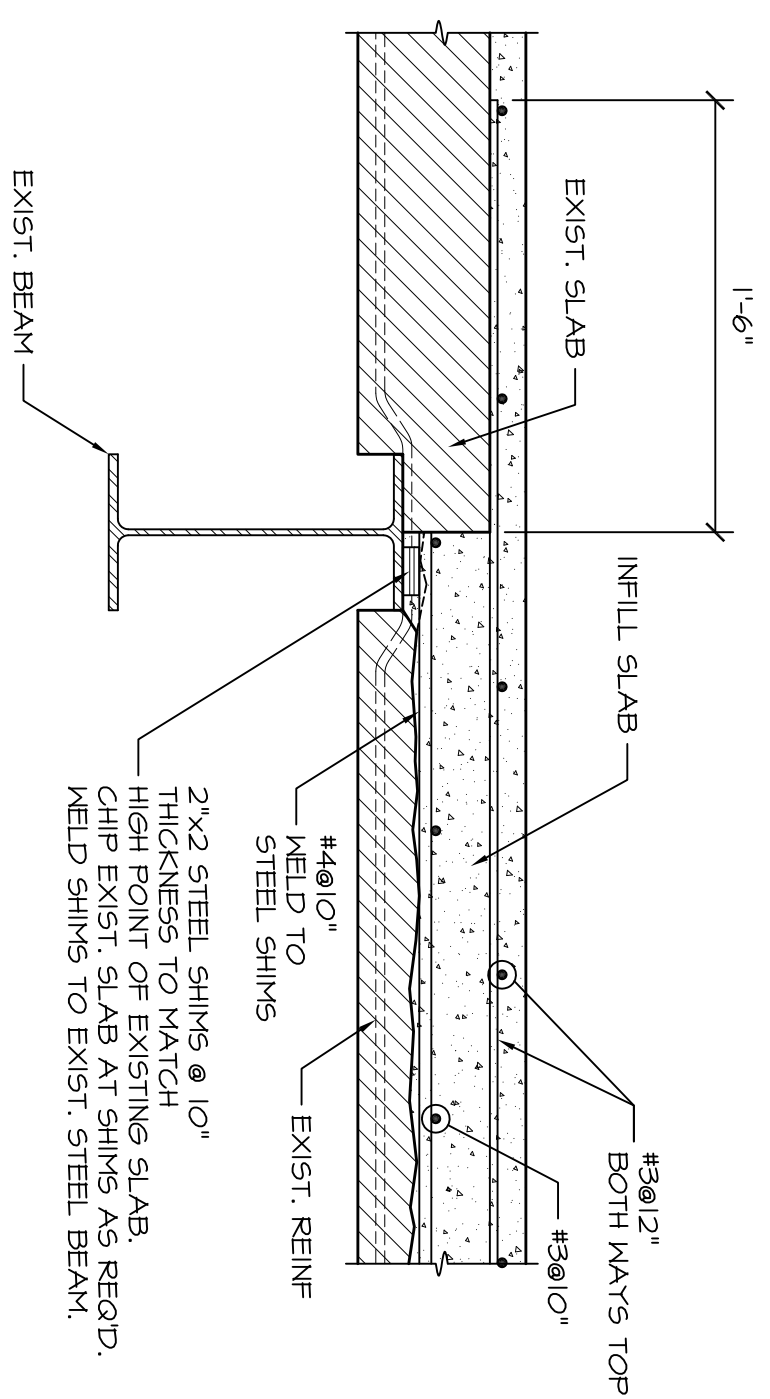


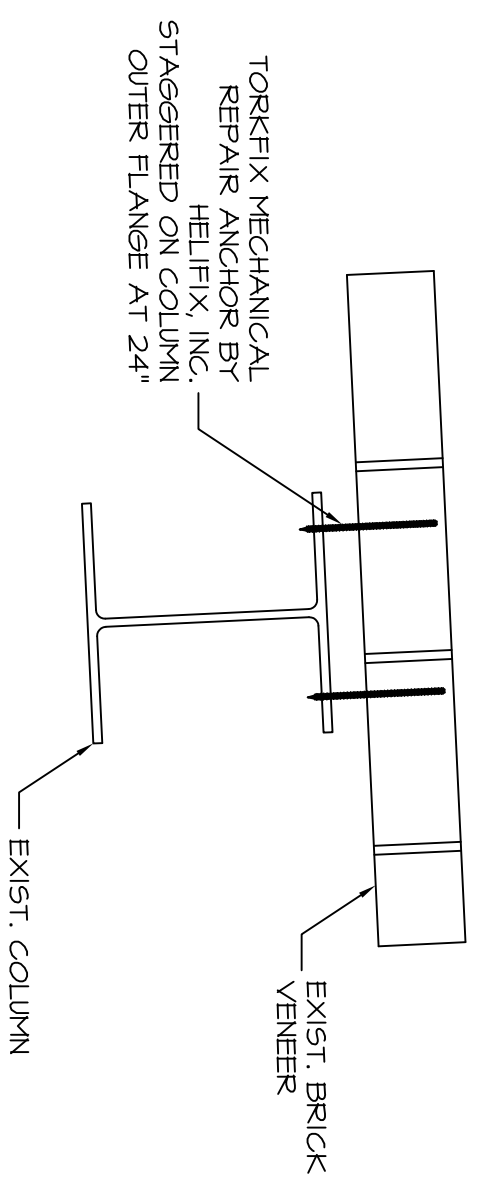
TYPICAL SLAB PATCH DETAIL
 1/2"=1'-0"
 FORM BOTTOM OF SLAB WITH PLYWOOD.
 LEAVE FORM IN PLACE FOR MIN 7 DAYS.
 PLACE 1" - 2" TOPPING CONCRETE OVER EXIST. AND INFILL SLAB.



TYPICAL INFILL SLAB DETAIL
 1/2"=1'-0"
 FORM BOTTOM OF SLAB WITH PLYWOOD OR STEEL FORMS.
 SHORE FORMWORK FOR TWO FLOORS BELOW NEW SLAB.
 LEAVE FORMS AND SHORING IN PLACE FOR MIN 7 DAYS.
 PLACE 1" - 2" TOPPING CONCRETE OVER EXIST. AND INFILL SLAB.



TYPICAL SLAB REPAIR DETAIL
 1/2"=1'-0"



DETAIL A
 1/2"=1'-0"
 THIS DETAIL APPLIES WHERE ORIGINAL BRICK
 TILES HAVE BEEN REMOVED OR DAMAGED
 DURING DEMO OF TERRAZZOTA TILE. SEE
 ARCHITECTURAL FOR LOCATIONS.

S2.01

Date:
01 July, 2013

Scale:
As Noted

Revisions:	
1	1 Jul 2013 30% Marriott Submission
2	9 Sep 2013 60% Marriott Sub. & Pric.
3	14 Oct 2013 Bid & Marriott Review

**STRUCTURAL SECTIONS
AND DETAILS**

Project:
Press Hotel
119 Exchange St.
Portland, Maine 04101

Architect:
ARCHETYPE
Architects
48 Union Wharf Portland, Maine 04101
(207) 772-6022 Fax (207) 772-4056

Consulting Engineer:
STRUCTURAL DESIGN CONSULTING
22 Oakmont Drive
Old Orchard Beach ME
04064-4121
Tel 207.934.8038
Fax 207.934.8039

Prepared For:
**119 DEVELOPMENT,
LLC**
P.O. Box 7468
Portland, Me 04112