

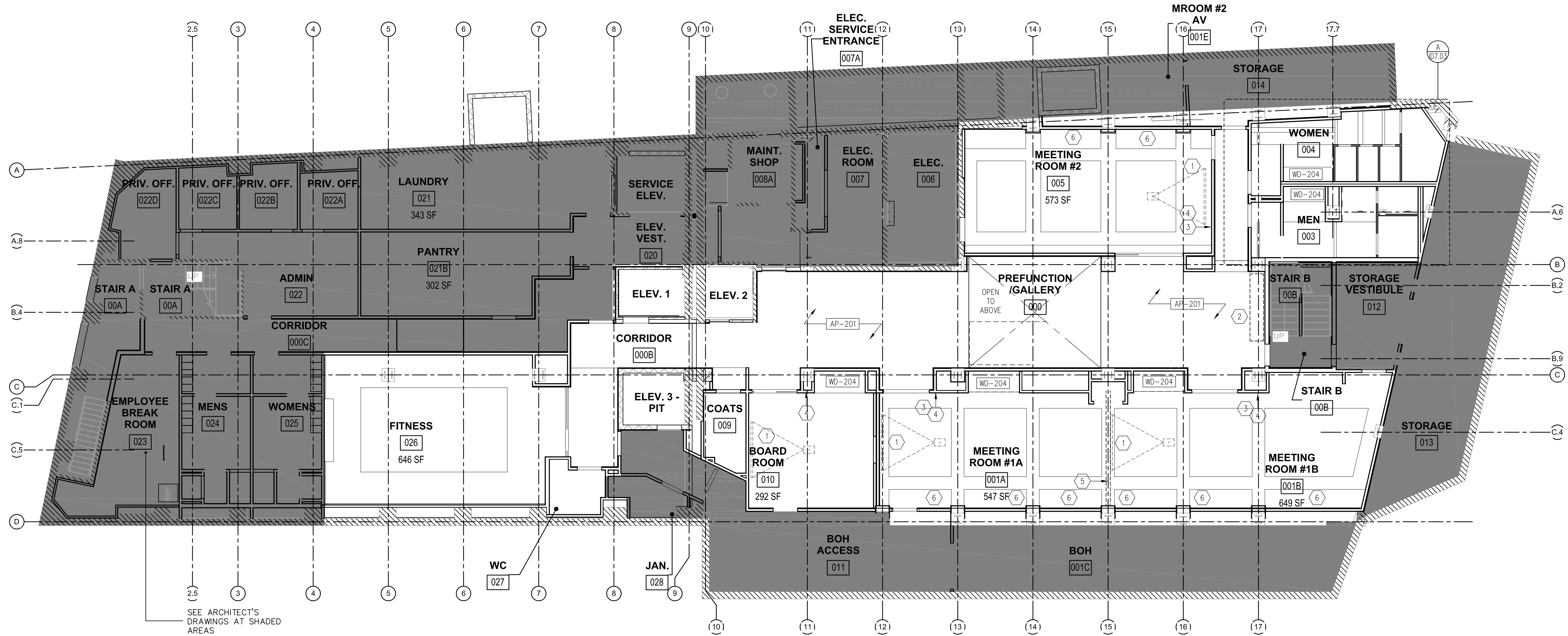
2 LOBBY LEVEL - RCP
1/8" = 1'-0"

LOBBY LEVEL LIGHTING GENERAL NOTES:

- ALL CEILINGS TO BE PAINTED GYP. BD., PT-210, UNLESS NOTED OTHERWISE.
- REFER TO ARCHITECT'S DRAWINGS FOR LIGHTING PLAN AND CEILING HEIGHTS.
- SEE SHEET ID8.04 FOR ELEVATOR INFO.

LOBBY LEVEL LIGHTING SHEET NOTES:

- RECESSED PROJECTOR SCREEN. SEE ARCHITECT'S SPECIFICATIONS.
- SWITCH FOR RECESSED MOTORIZED PROJECTION SCREEN. SEE ELECTRICAL DRAWINGS.



1 LOWER LEVEL - PLAN
1/8" = 1'-0"

LOWER LEVEL LIGHTING GENERAL NOTES:

- ALL CEILINGS TO BE PAINTED GYP. BD., PT-202, UNLESS NOTED OTHERWISE.
- REFER TO ARCHITECT'S DRAWINGS CEILING HEIGHTS ELECTRICAL DRAWINGS FOR LIGHTING PLAN.

LOWER LEVEL LIGHTING SHEET NOTES:

- RECESSED PROJECTOR SCREEN. SEE ARCHITECT'S SPECIFICATIONS.
- ARCHITECT TO PROVIDE BLOCKING IN CEILING FOR HANGING SCULPTURE.
- CONTROLLER FOR OPERABLE SHADES AT CLERESTORY WINDOWS. SEE ARCHITECT'S SPECIFICATIONS AND ELECTRICAL DRAWINGS.
- SWITCH FOR RECESSED MOTORIZED PROJECTION SCREEN. SEE ELECTRICAL DRAWINGS.
- TRACK FOR OPERABLE PARTITION. SEE ARCHITECT'S DRAWINGS FOR INFO.
- MOTORIZED SHADES AT CLERESTORY WINDOWS

Prepared For:	119 Development, LLC P.O. Box 7468 Portland, ME 04112										
	Consultant:	STONEHILL & TAYLOR ARCHITECTS AND PLANNERS 31 W. 27th Street New York, NY 10001 (212) 226-8898 Fax (212) 941-1874									
Architect:	ARCHETYPE architects 48 Union Wharf Portland, Maine 04101 (207) 772-6022 Fax (207) 772-4056										
Project:	Press Hotel 119 Exchange St. Portland, ME 04101										
Revisions:	<table border="1"> <tr> <td>1</td> <td>13-07-01</td> <td>30% Marriott Submission</td> </tr> <tr> <td>2</td> <td>13-09-09</td> <td>60% Marriott Sub. & Pric.</td> </tr> <tr> <td>3</td> <td>13-10-14</td> <td>Issue for Bid & Marriott Rev.</td> </tr> </table>		1	13-07-01	30% Marriott Submission	2	13-09-09	60% Marriott Sub. & Pric.	3	13-10-14	Issue for Bid & Marriott Rev.
1	13-07-01	30% Marriott Submission									
2	13-09-09	60% Marriott Sub. & Pric.									
3	13-10-14	Issue for Bid & Marriott Rev.									
Date:	06 SEPT, 2013	Scale: 1/8" = 1'-0"									
LOWER LEVEL & LOBBY LEVEL REFLECTED CEILING PLAN											
ID-2.01											