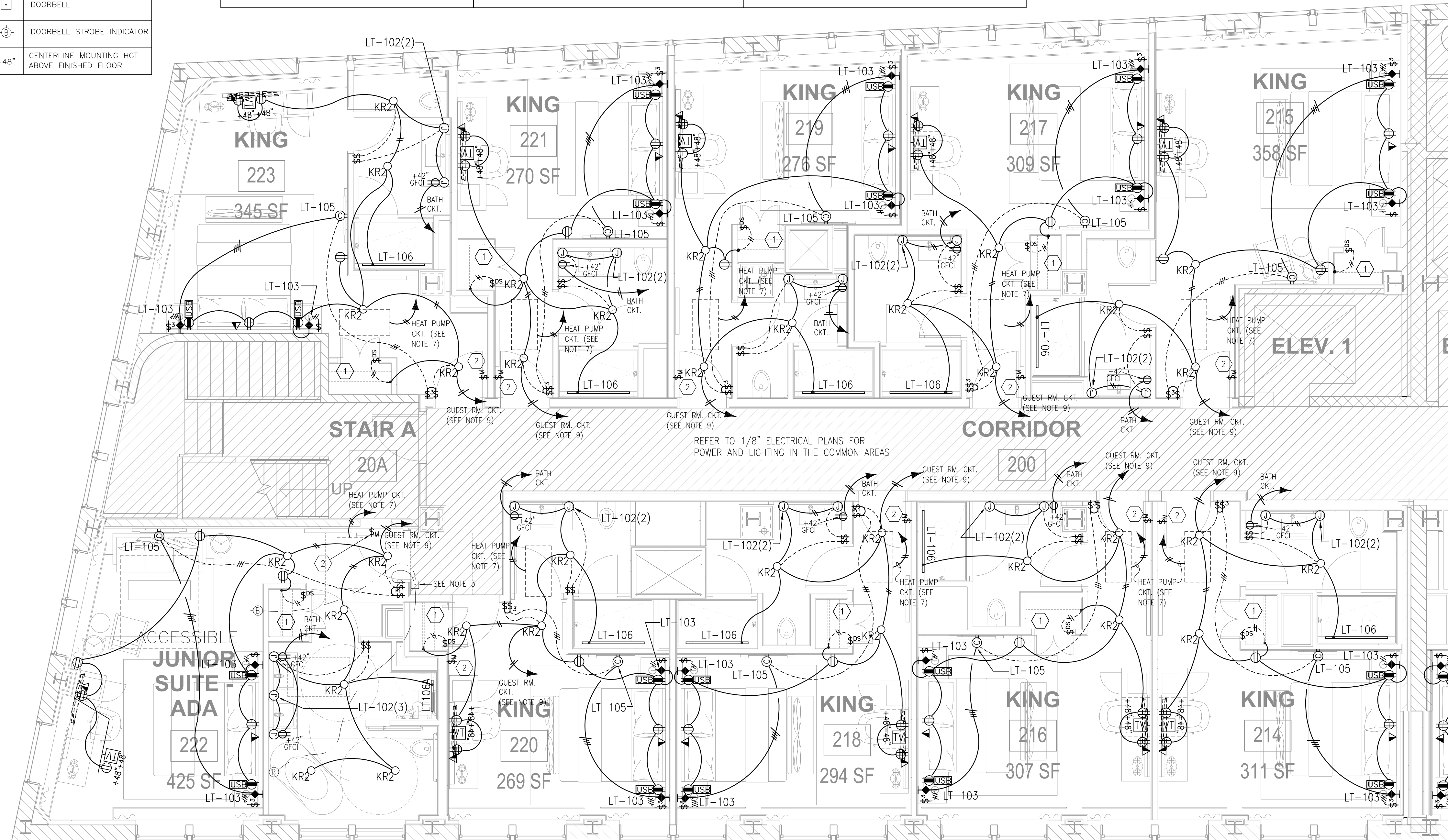


GUEST ROOMS ELECTRICAL SYMBOLS

\$	SINGLE POLE SWITCH.	○	RECESSED DOWNLIGHT
\$ ³	THREE-WAY SWITCH.	◆	WALL SCONCE
\$ ^w	MASTER LIGHT SWITCH	⊙	WALL MOUNTED PICTURE LIGHT
\$ ^{ps}	DOOR SWITCH	▶	VOICE/DATA OUTLET BOX
⊕	DUPLEX RECEPTACLE, GROUND POLE UP	TV	TELEVISION ANTENNA OUTLET
⊕	QUAD RECEPTACLE, GROUND POLE UP	AFF	ABOVE FINISHED FLOOR
USB	RECEPTACLE/USB OUTLET	□	DOORBELL
GFCI	GROUND FAULT CIRCUIT INTERRUPTER	⊕	DOORBELL STROBE INDICATOR
⊕	JUNCTION BOX	+48"	CENTERLINE MOUNTING HGT ABOVE FINISHED FLOOR

GUEST ROOM GENERAL NOTES

- REFER TO ARCHITECTURAL DRAWINGS FOR EXACT DIMENSIONS.
- REFER TO SHEET E5.01 FOR ELECTRICAL DETAILS.
- ACCESSIBLE AND HEARING IMPAIRED GUESTROOMS SHALL COMPLY W/ REQUIREMENTS OF THE A.D.A. GUIDELINES MANUAL; NAMELY ADA 9.2.2, 9.3, & 4.315. TELEPHONES SHALL HAVE ADJUSTABLE VOLUME CONTROL AND THE ROOM SHALL HAVE NOTIFICATION ALARM DEVICE SYSTEM FOR DOOR KNOCK OR BELL. (EDWARDS NO. 7004 GUESTROOM DOOR ANNUNCIATOR), AND FOR INCOMING TELEPHONE CALLS.
- NO BACK TO BACK DEVICES SHALL BE ALLOWED. DEVICES MUST BE OFFSET A MINIMUM OF 24" BETWEEN DEVICES.
- 120 VOLT SMOKE DETECTORS IN ALL GUESTROOMS SHALL BE EQUIPPED WITH ANNUNCIATOR AND/OR STROBE DEVICE AS REQUIRED. GUESTROOM ALARM SHALL PROVIDE INDIVIDUAL ALARM WITHIN GUESTROOM ONLY. A SEPARATE SYSTEM NOTIFICATION DEVICE SHALL BE ACTIVATED UPON GENERAL FIRE ALARM. IN ACCESSIBLE AND HEARING IMPAIRED ROOMS, AN ADA HORN/STROBE SHALL BE PROVIDED, WITH AN ADDITIONAL STROBE IN THE BATH. REFER TO SPECIFICATIONS. SEE RISER DETAIL 4A/4B SHEET E5.2. PROVIDE WITH BATTERY BACKUP & 120 VOLT POWER CONN. TANDEM WIRE SMOKE DETECTOR IN EACH GUEST ROOM SO THAT WHEN ONE ALARMS BOTH ALARM.
- INCREASE 120 VOLT HOMERUNS FOR GUEST ROOM LIGHTS AND RECEPTACLES BY ONE WIRE SIZE FOR EVERY 100 FEET.
- MOUNT ALL RECEPTACLES, TV AND TELEPHONE/DATA SYSTEM OUTLETS IN GUEST ROOMS AT 12" TO CENTER A.F.F. UNLESS NOTED OTHERWISE.
- MOUNT ALL RECEPTACLES, TV, AND TELEPHONE/DATA SYSTEM OUTLETS IN ACCESSIBLE GUEST ROOMS AT 18" A.F.F. ACCESSIBLE GUEST ROOMS SHALL MEET ADA REQUIREMENTS. REFER TO DETAIL 5 SHEET E5.01.
- ALL SWITCHES IN GUESTROOM TO BE MOUNTED 48" A.F.F. TO CENTER UNLESS NOTED OTHERWISE.
- REFER TO INTERIOR DESIGN DRAWINGS FOR GUESTROOM LIGHTING AND OUTLET MOUNTING DETAILS.
- REFER TO INTERIOR DESIGN DRAWINGS FOR GUEST ROOM LIGHTING FIXTURE SCHEDULE.



ACCESSIBLE AND HEARING IMPAIRED ROOMS PER ARCHITECTURAL PLANS:

201, 207 (HEARING); 222 (ACCESSIBLE)
 307, 322 (HEARING); 309, 323 (ACCESSIBLE)
 407, 422 (HEARING); 410 (ACCESSIBLE)
 502, 523 (HEARING); 516 (ACCESSIBLE)
 601 (HEARING & ACCESSIBLE), 614 (HEARING)
 701, 712 (HEARING); 710 (ACCESSIBLE)

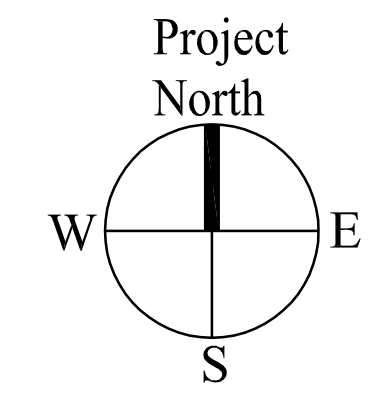
VERIFY LOCATIONS PRIOR TO ROUGH-IN

- LIGHTING KEY NOTES:
- ILLUMINATED CLOSET ROD FURNISHED WITH INTERIOR PACKAGE, E.C. TO WIRE THEM TO DOOR SWITCH.
 - GUEST ROOM MASTER LIGHT SWITCH, TURNS OFF ALL LIGHTS INCLUDING THE BATH ROOM LIGHTS. PROVIDE ALL INTERCONNECTING WIRING TO PERFORM THIS FUNCTION.

- LIGHTING GENERAL NOTES:
- ALL LT-101 J-BOXES TO BE MOUNTED AT +82" AFF.
 - ALL J-BOXES FOR LT-102 VANITY SCONCE TO BE MOUNTED AT +64" AFF.
 - ALL LT-103 & LT-103A J-BOXES FOR HEADBOARD SCONCE ARE TO BE MOUNTED AT +54" AFF.
 - ALL CLOCK OUTLETS FOR LT-105 PICTURE LIGHT TO BE MOUNTED AT +60" AFF.
 - LT-106 SHOWER LIGHT IS TO BE MOUNTED IN RECESSED CEILING POCKET. SEE DETAIL.
 - SEE GUESTROOM BATH DRAWINGS, SHT. 107.XX FOR TYPICAL VANITY SCONCE LT-107 LOCATION.
 - BEDSIDE GOOSENECK READING LIGHT LT-108 IS PLUG-IN. SEE HEADBOARD DETAIL FOR INFO.
 - ALL LT-109 CORRIDOR PICTURE CLOCK OUTLETS TO BE MOUNTED AT +66" AFF.
 - DRAPERY VALANCE IS GC PROVIDED. SEE DETAIL.

GENERAL NOTES:

- REFER TO GUEST ROOM GENERAL NOTES AND ELECTRICAL SYMBOLS THIS SHEET.



Prepared For: **119 Development, LLC**
 P.O. Box 7468
 Portland, ME 04112

Consultant: **CJS ENGINEERING**
 CONSTANCE HICKEY SCOTT, PE
 7846 WOOD OAK COVE
 CORDOVA, TN 38016
 TEL: (901) 830-5300
 EMAIL: chscott@cjsengineering.com

Architect: **ARCHETYPE architects**
 48 Union Wharf Portland, Maine 04101
 (207) 772-6022 Fax (207) 772-4056

Project: **Press Hotel**
 119 Exchange St.
 Portland, ME 04101

Revisions: **ISSUED FOR BID 10/14/13**

Date: **PART A SECOND FLOOR 'GUESTROOM' ELECTRICAL PLANS**

E3.01