

Prepared For:
119 Development, LLC
 P.O. Box 7468
 Portland, ME 04112

Consultant:
ESI ENGINEERS
 since 1914
FAY, SPOFFORD & THORNDIKE, INC.
 778 MAIN ST., SUITE 4, SOUTH PORTLAND, ME 04106

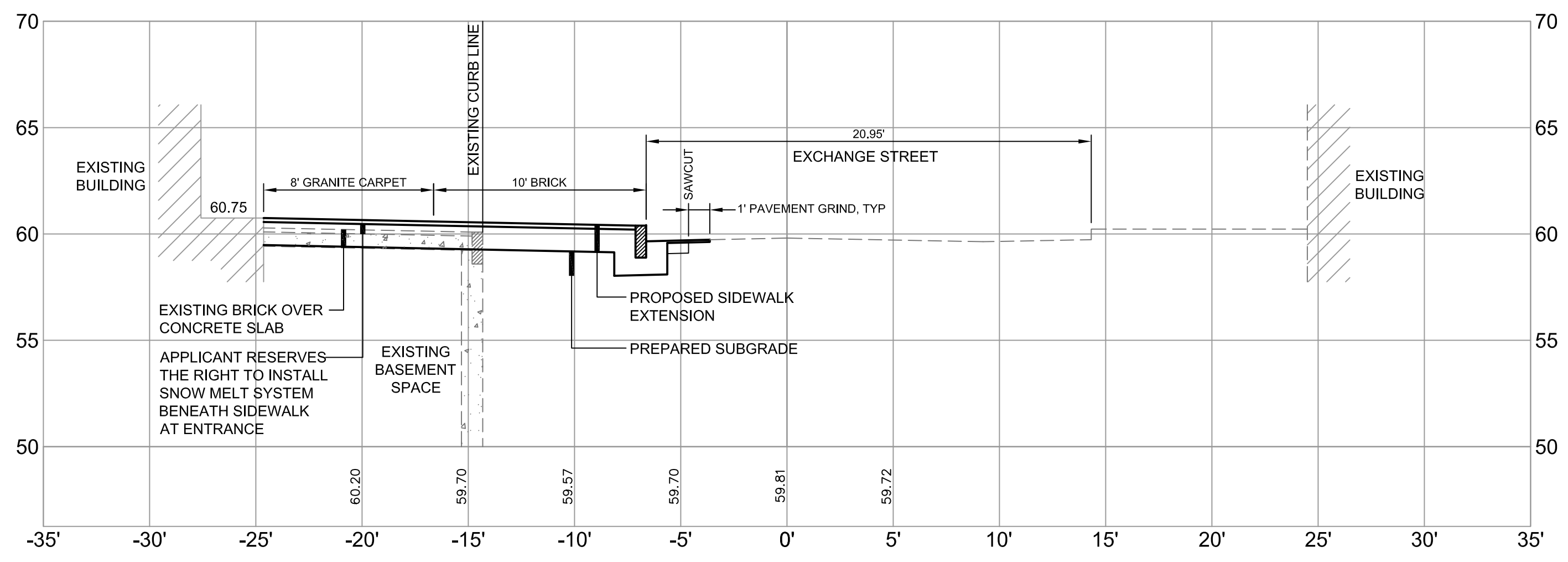
Architect:
ARCHETYPE architects
 48 Union Wharf Portland, Maine 04101
 (207) 772-6022 Fax (207) 772-4056

Project:
Press Hotel
 119 Exchange St.
 Portland, ME 04101

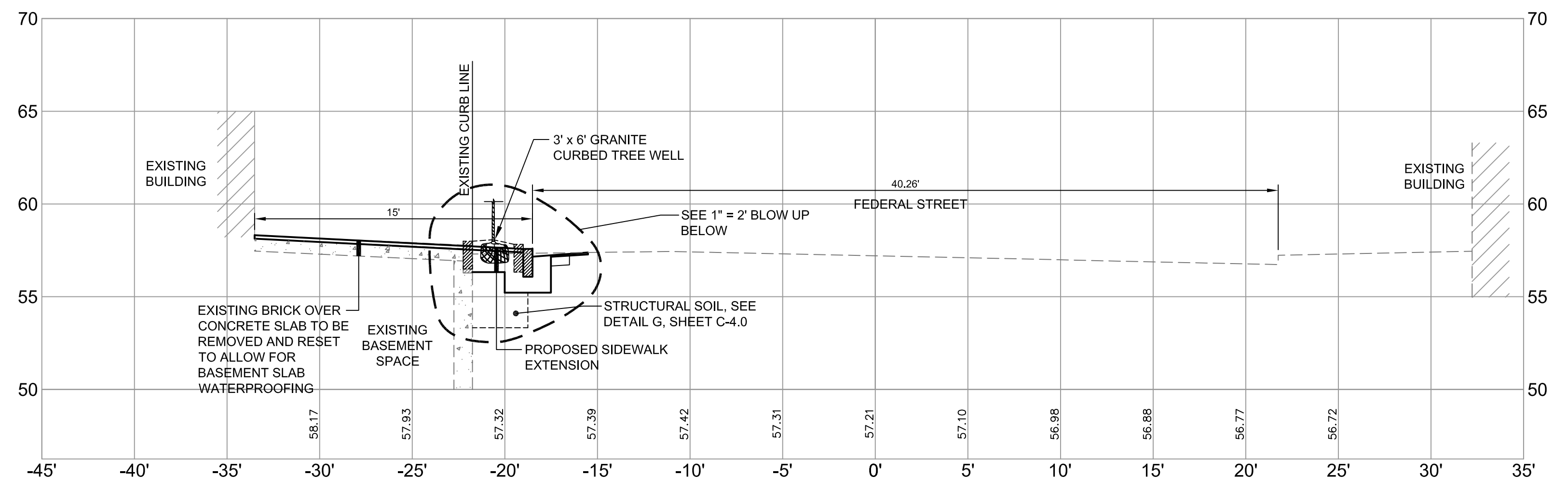
Revisions:
 10/14/13 Released for Bid
 08/29/13 Issued for 100% Design Review
 08/14/13 Issued for 60% Design Review and Pricing
 07/07/13 Issued for 30% Design Review and Pricing
 10/29/12 Final Plan Submission
 10/29/12 Site Plan Submission
 09/18/12 Preliminary Site Plan Application

Date: 01 JULY, 2013
 Scale: AS NOTED
CROSS SECTIONS

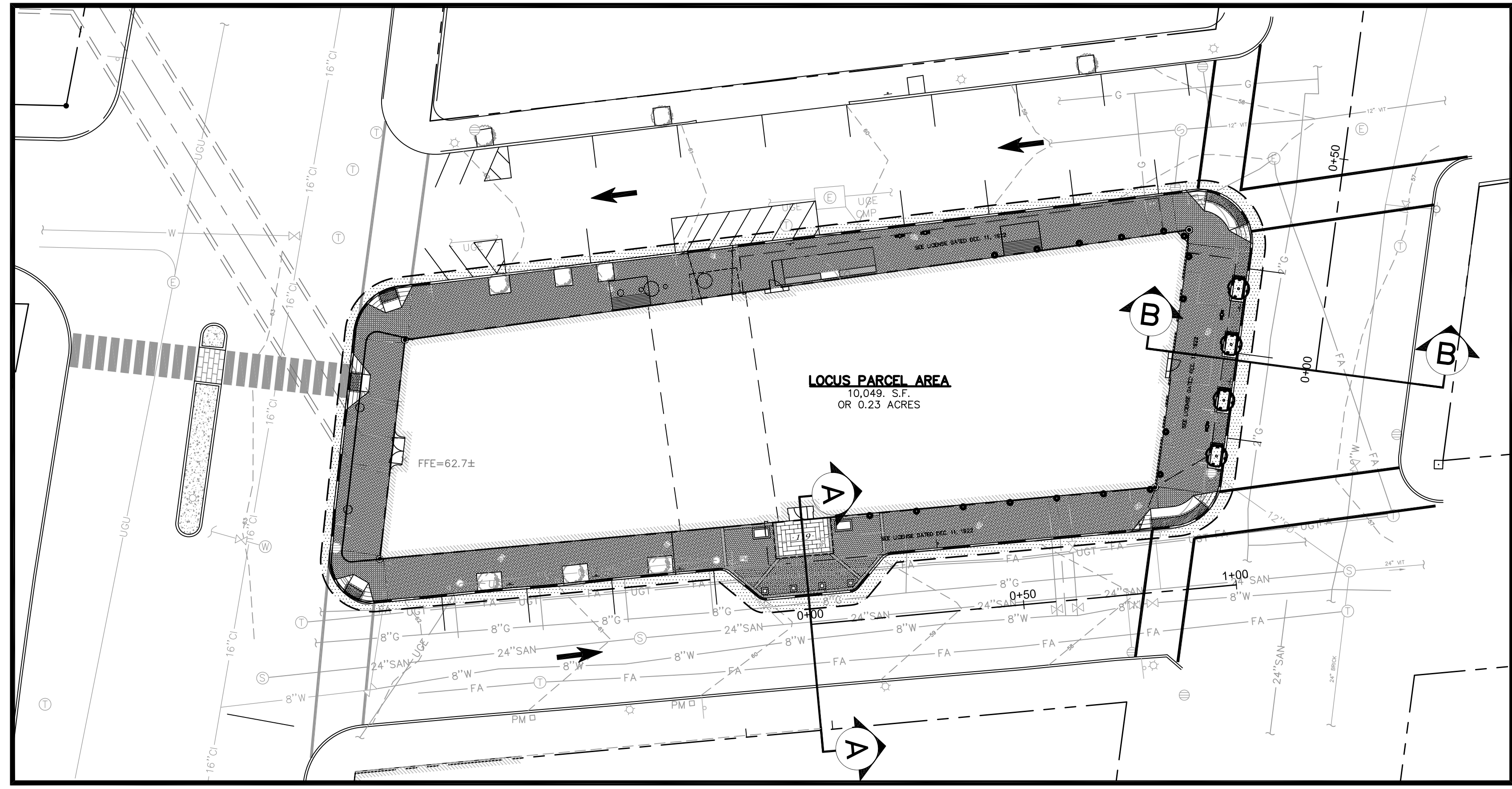
C4.02



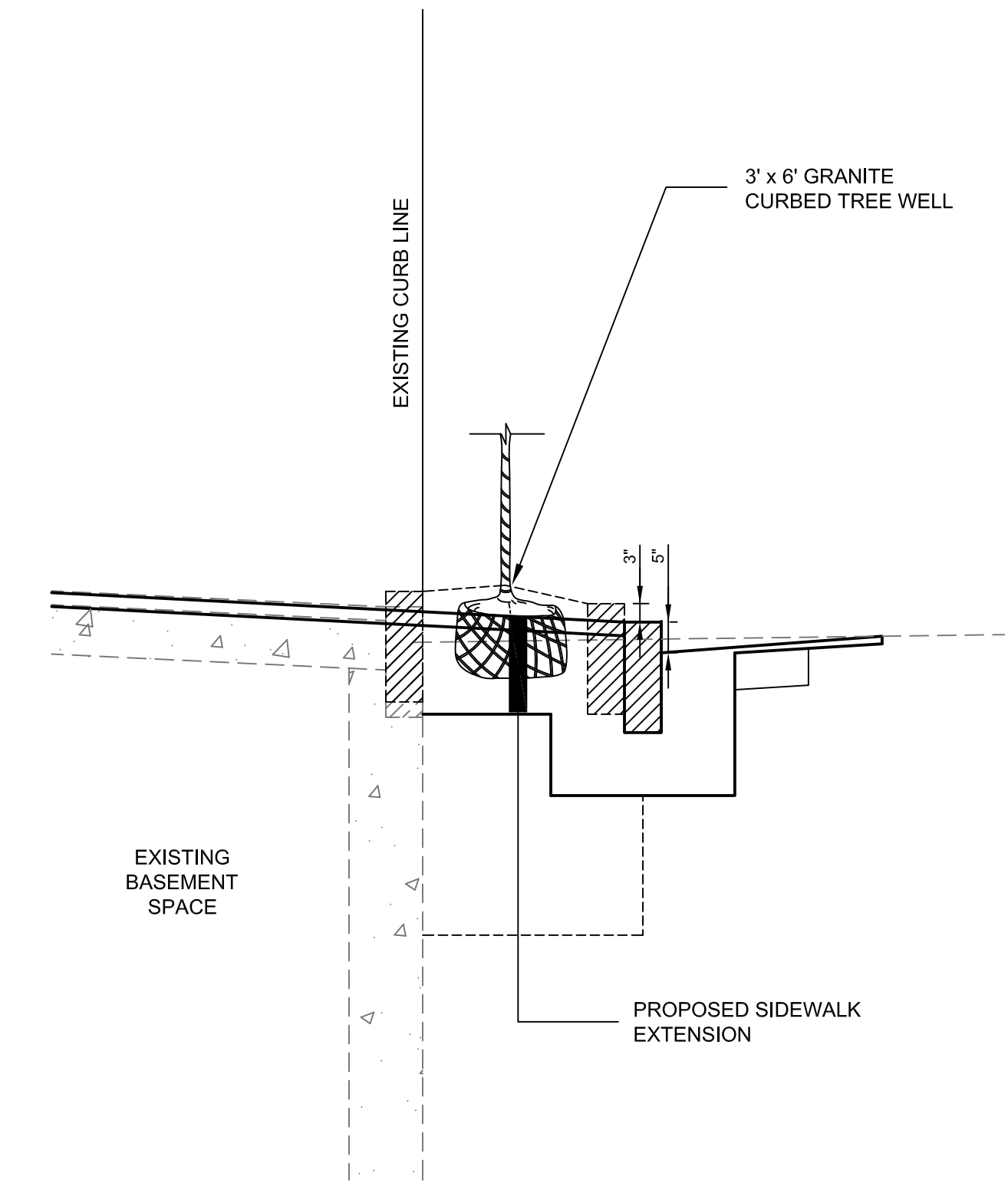
SECTION A-A
 SCALE: H: 1" = 5'; V: 1" = 5'



SECTION B-B
 SCALE: H: 1" = 5'; V: 1" = 5'



ORIENTATION SKETCH
 SCALE: 1" = 20'



BLOW UP
 SCALE: 1" = 2'