

Prepared For:
119 Development, LLC
 P.O. Box 7468
 Portland, ME 04112

Consultant:
ESTI
 ENGINEERS
 since 1914
FAY, SPOFFORD & THORNDIKE, INC.
 778 MAIN STREET, SEVENTH FLOOR, PORTLAND, ME 04101
 (207) 772-6022 Fax (207) 772-4056

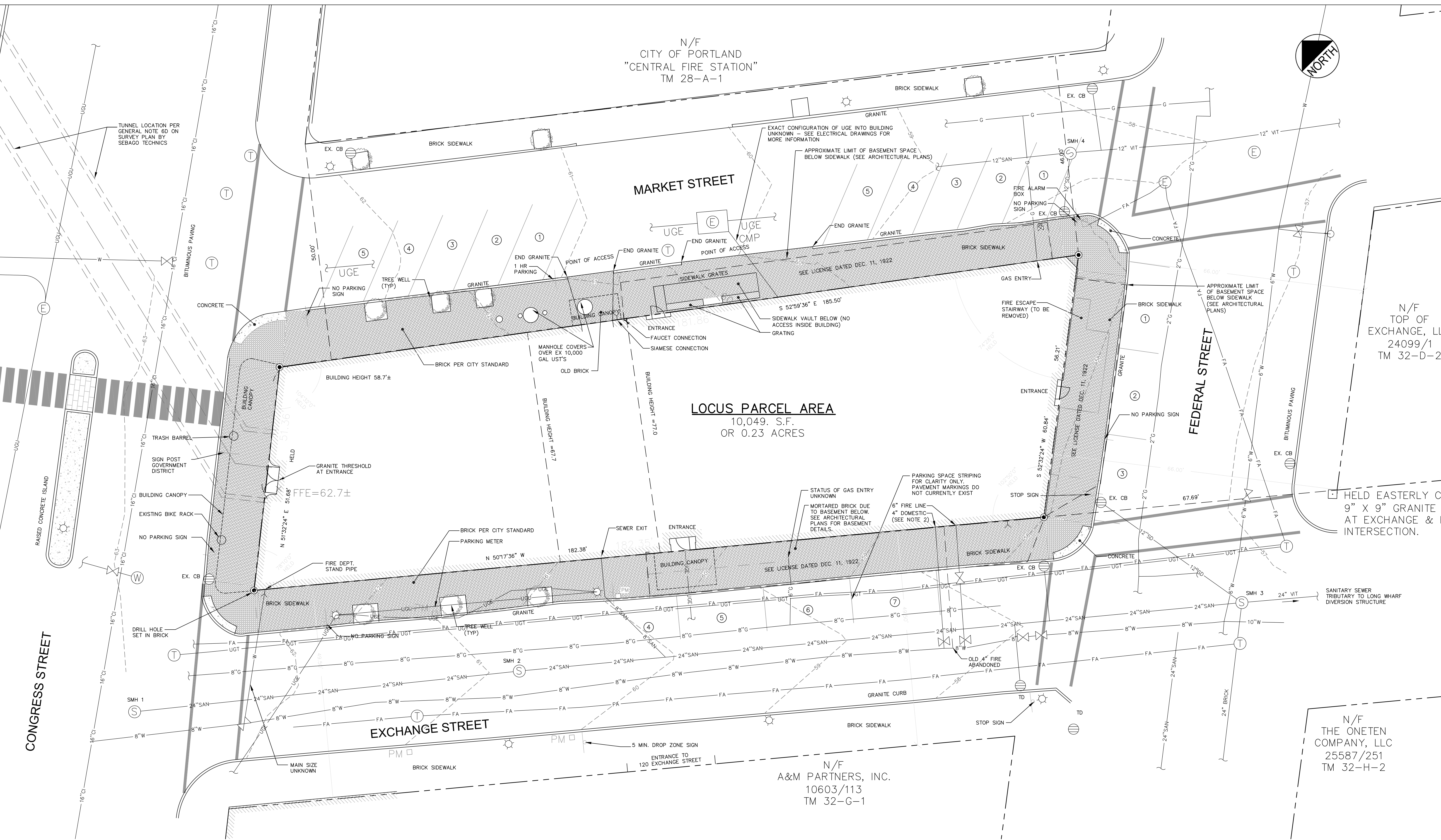
Architect:
ARCHETYPE
 architects
 48 Union Wharf Portland, Maine 04101
 (207) 772-6022 Fax (207) 772-4056

Project:
Press Hotel
 119 Exchange St.
 Portland, ME 04101

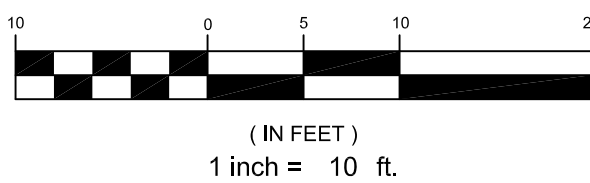
Revisions:
 10/14/13 Released for Bid
 08/29/13 Issued for 100% Design Review
 08/14/13 Issued for 90% Design Review and Pricing
 07/01/13 Issued for 30% Design Review and Pricing
 10/29/12 Final Submission
 10/29/12 Preliminary Site Plan Application
 09/18/12 Preliminary Site Plan Application

Date: 01 JULY, 2013
 Scale: 1" = 10'
EXISTING CONDITIONS PLAN

C2.01



NOTE:
 1. SPACES 4 - 7 ON EXCHANGE STREET, SPACES 1 - 3 ON FEDERAL STREET AND ALL SPACES ON MARKET STREET ARE IDENTIFIED AS UNRESTRICTED PARKING SPACES. IT IS THOUGHT THAT PARKING METERS WERE NOT INSTALLED AT THESE LOCATIONS DUE TO THE BASEMENT SPACE LOCATED UNDERNEATH THE SIDEWALK PER LICENSE AGREEMENT DATED DEC. 11, 1922.
 2. WATER SERVICE LOCATIONS PER PORTLAND WATER DISTRICT RECORDS



PLAN REFERENCE
 1. "ALTA / ACSM LAND TITLE SURVEY OF CONGRESS STREET SITE, 390 CONGRESS STREET, PORTLAND, MAINE FOR: GRAND METRO BUILDERS OF NEW YORK CORP." BY SEBAGO TECHNICS, DATED 07.20.09.
 2. PROJECT BENCHMARK: USC&G BRASS DISK SET IN GRANITE BLOCK STAMPED "1919/38" NAVD 88 ELEVATION = 68.95', CITY DATUM ELEVATION = 69.682'