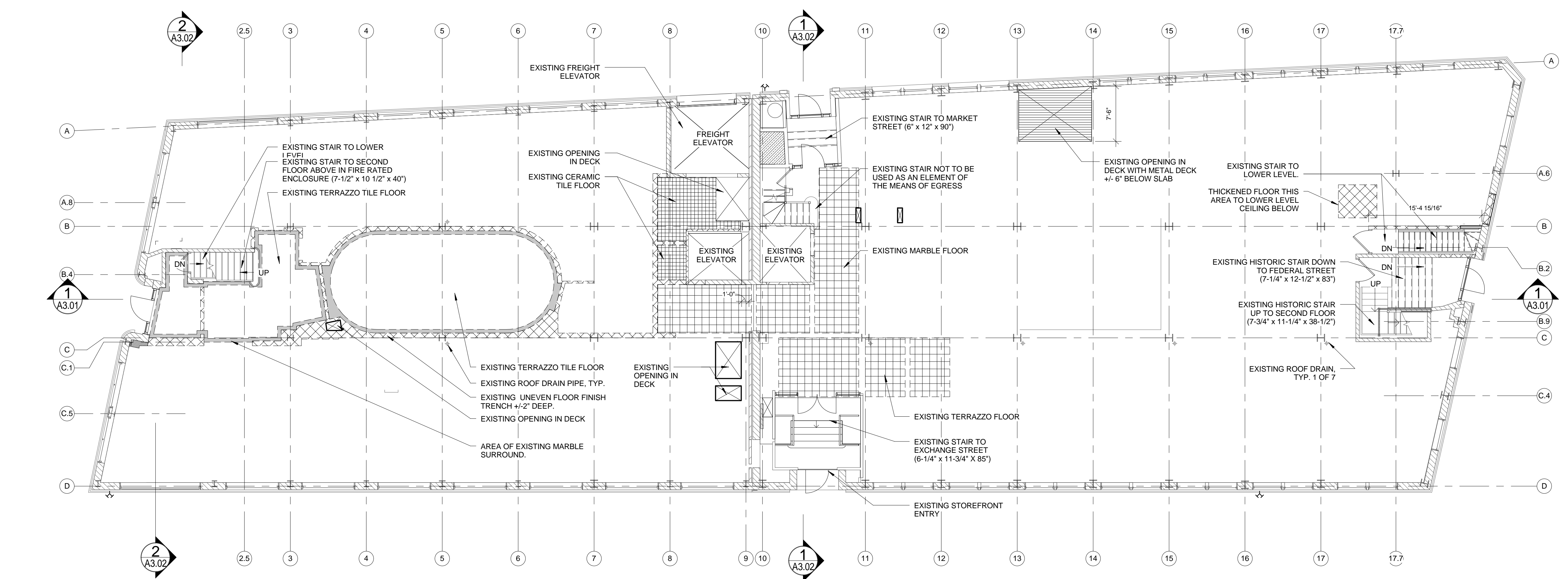


**2 FIRST FLOOR - DEMOLITION PLAN**  
 1/8" = 1'-0"  
 0 2' 4' 8' 16'



**1 FIRST FLOOR - EXISTING CONDITIONS PLAN**  
 1/8" = 1'-0"  
 0 2' 4' 8' 16'

Prepared For:		<b>119 Development, LLC</b> P.O. Box 7486 Portland, ME 04112	
Architect:		<b>ARCHETYPE Architects</b> 48 Union Wharf Portland, Maine 04101 (207) 772-6022 Fax (207) 772-4056	
Project:		<b>PRESS HOTEL</b> 390 CONGRESS STREET PORTLAND, ME 04101	
Date:		14 OCT 13	
Scale:		1/8" = 1'-0"	
Revisions:		1 13_07-01 30% Marriott Submission 2 13_09-09 60% Marriott Sub. & Pric. 3 13_10-14 Issue for Bid & Marriott Revw	
Date:		14 OCT 13	
Scale:		1/8" = 1'-0"	
Revisions:		1 13_07-01 30% Marriott Submission 2 13_09-09 60% Marriott Sub. & Pric. 3 13_10-14 Issue for Bid & Marriott Revw	
Project:		<b>PRESS HOTEL</b> 390 CONGRESS STREET PORTLAND, ME 04101	
Prepared For:		<b>119 Development, LLC</b> P.O. Box 7486 Portland, ME 04112	

**A0.03**  
 FIRST FLOOR EXISTING AND DEMOLITION PLANS