

Prepared For:  
**119 Development, LLC**

Consultant:  
 Crabtree Engineering  
 278 Amelia Cove  
 Collierville, Tennessee 38017  
 majidhatamzadeh@yahoo.com

Architect:  
**ARCHITECTS**  
 Architects  
 48 Union Wharf Portland, Maine 04101  
 (207) 772-6022 Fax (207) 772-4056

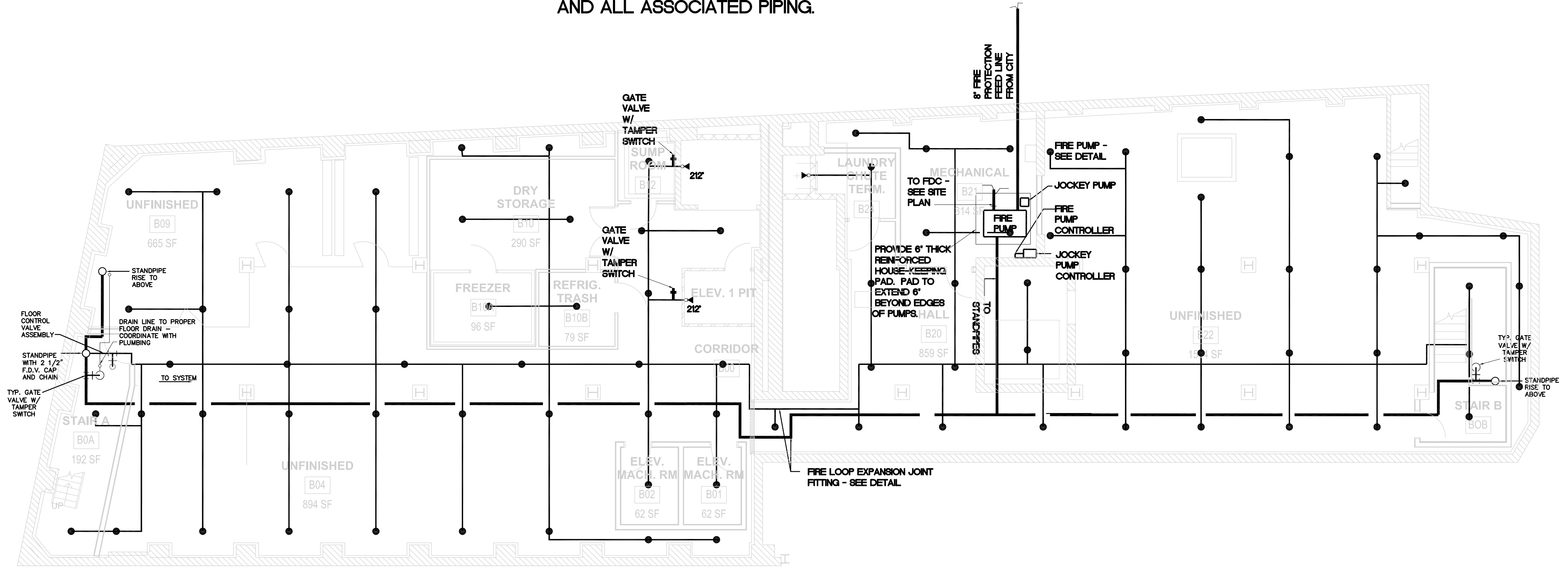
Project:  
**PRESS HOTEL**  
 390 CONGRESS STREET  
 PORTLAND, ME 04101

Revisions:	Date	Description
1	13-07-01	30% Marriott Submission
2	13-09-09	60% Marriott Sub. & Pric.
3	13-10-14	Issue for Bid & Marriott Revw

Date: 08 OCT 13  
 Scale: 1/8" = 1'-0"  
**SUB-BASEMENT PLAN - FIRE SPRINKLER**

**F0.10**

ALT #1 - CONTRACTOR TO PROVIDE A SEPERATE PRICE FOR THE FIRE PUMP AND ALL ASSOCIATED PIPING.



SPRINKLER LEGEND:	
●	SEMI-RECESSED Q.R. WHITE PENDANT HEAD.
▼	SIDEWALL Q.R. WHITE HEAD.
▼212	SIDEWALL Q.R. EXTENDED COVERAGE WHITE HEAD.

1 | SUB-BASEMENT PLAN - FIRE SPRINKLER  
 SCALE: 1/8"=1'-0"

