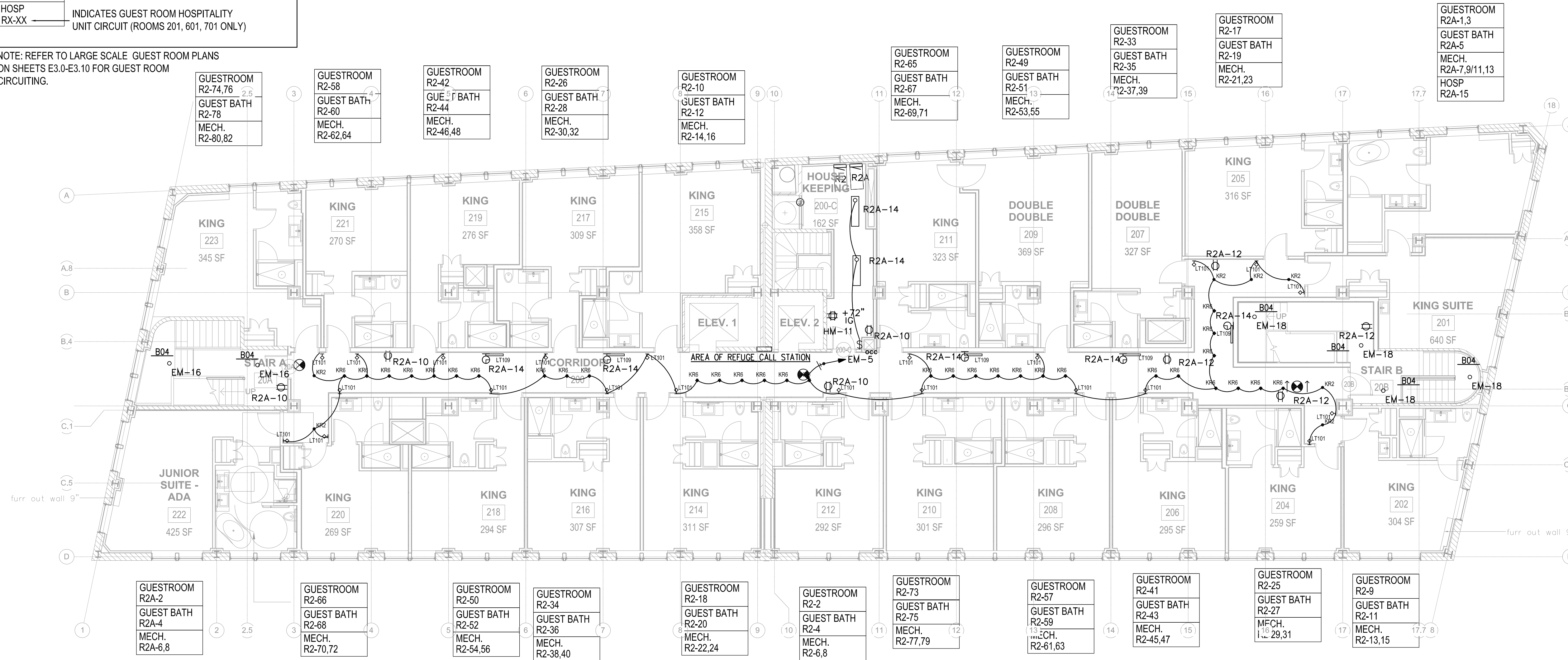


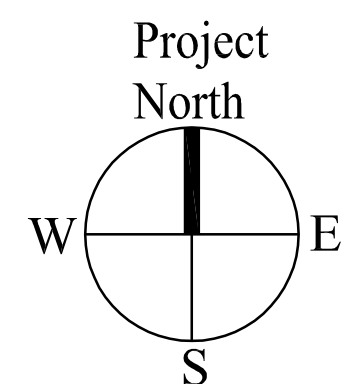
**CIRCUIT LEGEND:**

- GUESTROOM  
RX-XX ——— INDICATES GUEST ROOM CIRCUIT.
- GUEST BATH  
RX-XX ——— INDICATES GUEST BATHROOM CIRCUIT.
- MECH.  
RX-XX,XX ——— INDICATES HP CIRCUIT.
- HOSP  
RX-XX ——— INDICATES GUEST ROOM HOSPITALITY  
UNIT CIRCUIT (ROOMS 201, 601, 701 ONLY)

NOTE: REFER TO LARGE SCALE GUEST ROOM PLANS  
ON SHEETS E3.0-E3.10 FOR GUEST ROOM  
CIRCUITING.



**1** SECOND FLOOR PLAN  
SCALE: 1/8"=1'-0"



Prepared For:  
**119 Development,  
LLC**  
P.O. Box 7468  
Portland, ME 04112

Consultant:  
CHS ENGINEERING  
CONSTANCE HICKEY SCOTT, PE  
7846 WOOD OAK COVE  
CORDOVA, TN 38016  
TEL: (901) 830-5300  
EMAIL: chscont@chsengineering.com

Architect:  
**ARCHETYPE**  
architects  
48 Union Wharf Portland, Maine 04101  
(207) 772-6022 Fax (207) 772-4056

Project:  
**Press Hotel**  
119 Exchange St.  
Portland, ME 04101

Revisions:  
**ISSUED  
FOR BID  
10/14/13**

Scale:  
**SECOND FLOOR  
ELECTRICAL PLAN**

Date:  
**E2.02**