

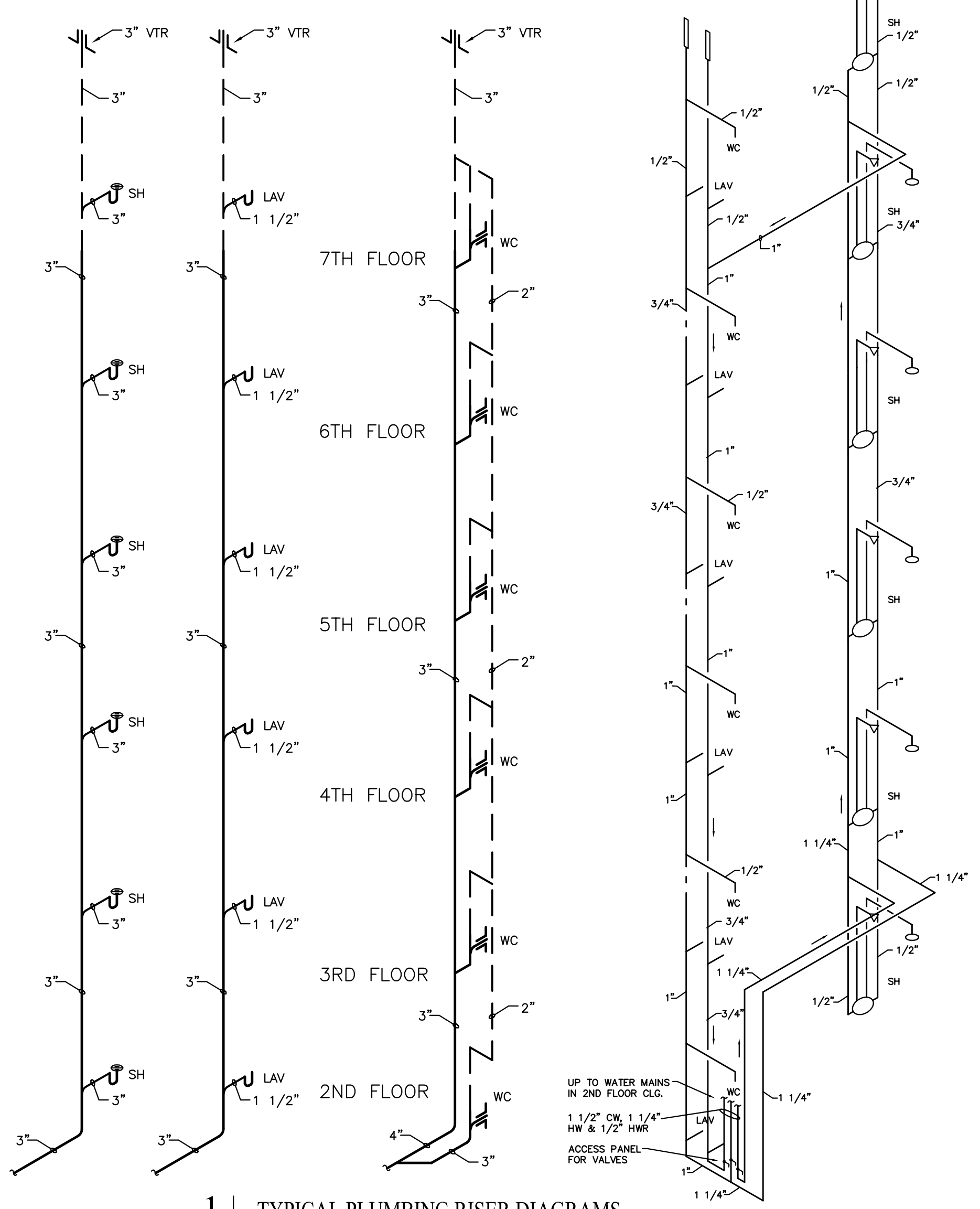
**PLUMBING GENERAL NOTES**

- THESE DRAWINGS ARE DIAGRAMMATIC AND SHOW GENERAL PLUMBING LAYOUTS AND PIPE ROUTING AND ARE FOR BIDDING PURPOSES ONLY. IT IS THE RESPONSIBILITY OF THE CONTRACTOR TO PREPARE DETAILED SHOP DRAWINGS AND CONFIRM SPACE ALLOCATIONS. ALL WORK SHALL CONFORM TO THE PLUMBING CODE.
- LOCAL AND STATE BUILDING CODES AND HEALTH REGULATIONS HAVING JURISDICTION, CONTRACTOR SHALL OBTAIN ALL FIELD APPROVALS AND PERMITS FROM GOVERNING AGENCIES AS REQUIRED. ROUGH-IN AND MAKE FINAL CONNECTIONS TO ALL FOOD PREP EQUIPMENT. COORDINATE WITH EQUIPMENT SUPPLIER FOR ALL ROUGH-INS. FURNISH AND/OR INSTALL ALL NECESSARY VALVES, TRAPS, FLOW CONTROLS, FILTERS, BACKFLOW PREVENTERS, FAUCETS, STOPS, TAILPIECES, VACUUM BREAKERS, ETC. IF NOT FURNISHED ON OR WITH EQUIPMENT, FURNISH AND INSTALL HAND SHUT-OFF VALVES ON ALL HOT AND COLD WATER LINES AT STUB-IN AND AS SHOWN ON PLANS. ALL WASTE AND VENT SHALL BE CAST IRON (PVC-DWV MAY BE USED WHERE ALLOWED BY CODE). INSULATE ALL DRAIN AND WATER LINES FROM ICE MACHINES WITH 1/2" THICK ARMAFLEX. FURNISH AND INSTALL WATER AND DRAIN PIPING FROM ALL FOOD PREP EQUIPMENT WHETHER OR NOT SHOWN ON DRAWINGS. FURNISH AND INSTALL APPROVED CHROME PLATED TYPE VACUUM BREAKERS WHERE REQUIRED BY CODE AND AS SHOWN ON PLANS. CONTRACTOR SHALL VERIFY ALL FLOW LINES PRIOR TO ROUGHING IN. CONTRACTOR MAY RE-LAYOUT TO HIS ADVANTAGE CODE EQUIVALENT PLUMBING SO AS TO REDUCE INSTALLATION COSTS OR TO REROUTE TO AVOID CONFLICTS WITH OTHER TRADES AFTER RECEIVING APPROVAL OF ARCHITECT/ENGINEER. PLUMBING CONTRACTOR SHALL COORDINATE WITH ELECTRICAL CONTRACTOR ALL VOLTAGES, ELECTRICAL LOADS, ETC. OF ALL ELECTRICALLY OPERATED EQUIPMENT PRIOR TO ORDERING EQUIPMENT. SEE ARCHITECTURAL AND STRUCTURAL DRAWINGS FOR ALL BUILDING DIMENSIONS, DETAILS, ELEVATIONS AND EXACT LOCATION OF PLUMBING FIXTURES. PLUMBING CONTRACTOR SHALL COORDINATE WITH ARCHITECTURAL, STRUCTURAL, ELECTRICAL, HVAC, SPRINKLER AND ALL OTHER TRADES FOR PIPE ROUTING AND EQUIPMENT PLACEMENT. AVOID INTERFERENCE WITH ARCHITECTURAL FEATURES, BEAMS, FOOTINGS, WINDOWS, ETC. NOTIFY ARCHITECT IMMEDIATELY OF ANY CONFLICTS.
- PLUMBING CONTRACTOR SHALL COORDINATE WITH ARCHITECTURAL, STRUCTURAL, ELECTRICAL, HVAC, SPRINKLER AND ALL OTHER TRADES FOR PIPE ROUTING AND EQUIPMENT PLACEMENT. AVOID INTERFERENCE WITH ARCHITECTURAL FEATURES, BEAMS, FOOTINGS, WINDOWS, ETC. NOTIFY ARCHITECT IMMEDIATELY OF ANY CONFLICTS.
- SLEEVES SHALL BE INSTALLED WHERE PIPING PASSES THRU STRUCTURE. SLEEVES SHALL BE EQUAL TO "PROSET". ALL OPENINGS THRU RATED WALLS OR FLOORS SHALL BE SEALED WITH AN APPROVED FIREPROOFING TO MAINTAIN THE INTEGRITY OF THE WALL OR FLOOR. PROVIDE MANUFACTURED COMPATIBLE PIPE HANGERS, RODS AND INSERTS, OR CLAMPS FOR THE PROPER SUPPORT OF ALL PIPING. BAND IRON, TIE WIRE, METAL STRAPPING OR WIRE STRAPPING WILL NOT BE PERMITTED. PROVIDE SUITABLE BACKING AND SUPPORT FOR ALL EQUIPMENT. PIPE VIBRATION AND/OR PIPE SWAY WILL NOT BE PERMITTED. ALL VTR'S SHALL BE A MINIMUM OF 15'-0" OR AS REQUIRED BY CODE FROM A/C
- INTAKES. OFFSET ALL VTR'S AS REQUIRED WHETHER OR NOT SHOWN ON DRAWINGS. PROVIDE ALL VTR'S WITH 4 LB. HIGH BOOT LEAD FLASHING OR AS REQUIRED BY ROOFING MANUFACTURER.
- ALL PIPING SHALL BE LABELED. SEE SPECIFICATIONS. PROVIDE PLASTIC OF METAL TAGS ON ALL VALVES. PLUMBING CONTRACTOR SHALL FURNISH ACCESS PANELS TO BE INSTALLED BY GENERAL CONTRACTOR AS REQUIRED FOR PLUMBING INSTALLATIONS. ALL VALVES AND SHOKSTOPS SHALL BE ACCESSIBLE. ALL WATER LINES NOT PROVIDED WITH SHOKSTOPS SHALL HAVE AIR CUSHIONS. PROVIDE LEAD FLASHING FOR ALL FLOOR DRAINS. PROVIDE OPENINGS FOR DRAINS FROM HVAC EQUIPMENT.
- COORDINATE LOCATIONS WITH HVAC CONTRACTOR. ANY PIPING SUBJECT TO FREEZING SHALL BE WRAPPED WITH HEAT TAPE AND INSULATED WHETHER OR NOT SHOWN ON THE PLANS. HEAT TAPE SHALL BE EQUAL TO RAYCHEM "XL TRACE". PROVIDE C.O.'S AT THE BASE OF ALL STACKS AS REQ'D. BY INSPECTOR. CONTRACTOR SHALL SUBMIT SHOP DRAWINGS SHOWING ALL SLEEVE LOCATIONS, ETC. TO STRUCTURAL ENGINEER FOR APPROVAL PRIOR TO STARTING ANY WORK. UPON COMPLETION OF THE WORK COVERED BY THIS CONTRACT, FURNISH THE OWNER WITH ONE COMPLETE SET OF REPRODUCIBLE "AS-BUILT" DRAWINGS WHICH SHOW ALL PLUMBING INSTALLED UNDER THIS CONTRACT. PROVIDE ACCESS PANELS FOR TUB WASTE & OVERFLOWS IF REQ'D. BY LOCAL INSPECTOR. PROVIDE ACCESS PANELS FOR TUB WASTE & OVERFLOWS IF REQ'D. BY LOCAL INSPECTOR.
- WHERE ACCESS PANELS ARE USED IN RATED CHASE WALLS INSTEAD OF W.C.O.'S ACCESS PANELS SHALL BE 8"x8" U.L. APPROVED AND AS SELECTED BY ARCHITECT.

**DRAINS,, CLEANOUT AND HOSE BIBBS SCHEDULE**

SEE ARCHITECTURAL PLANS FOR EXACT HEIGHT AND LOCATION OF ALL FIXTURES									
MARK	DESCRIPTION	MANUF.	MODEL NUMBER	HW	CW	W	V	DESCRIPTION	
FD-1	FLOOR DRAIN	J.R. SMITH JOSAM WADE ZURN	2005 SERIES 30000-C SERIES 1100 SERIES Z-415B 1200-27			3	1 1/2	NICKEL BRONZE	
FD-2	FLOOR SINK	J.R. SMITH JOSAM WADE ZURN	3140 49320A 9140 9110-15 Z-1900-K			3	1 1/2	KITCHEN AREA - NICKEL BRONZE	
FCO	FLOOR CLEANOUT	J.R. SMITH JOSAM WADE ZURN	#4251 U 55000 SERIES 6000,1-CF ZN-1400-NH					WITH CARPET CLAMPING FRAME	
WCO	WALL CLEAN OUT	J.R. SMITH JOSAM WADE ZURN	4402 58600-CO 8550X8480R Z1441					STAINLESS STEEL COVER	
NFWH	NON-FREEZE WALL HYDRANT	WOODFORD	B65			3/4		FREEZE PROOF TYPE WITH COVER	
HB	HOSE BIBB	CHICAGO	#952			3/4		WITH VACUUM BREAKER	
RPBP	BACK FLOW PREVENTER	WATTS	SERIES 909-S					DOMESTIC WATER SERVICE	
RD	ROOF DRAIN	J.R. SMITH JOSAM WADE ZURN	1015 21500 3000AE Z-100					CAST IRON DRAIN W/ CAST DOME	
---	WASHER BOX	GUY GRAY	BB200-TS	1/2	1/2	2	1 1/2	WASHER BOX W/ VALVES & 2" DRAIN	
---	HAND HELD PORTABLE SHWR							PURCHASE ONE PER PROJECT FOR HOUSEKEEPING USE	

- NOTES:
- SUBMIT ALL FIXTURES TO MARRIOTT, ARCHITECT & OWNER FOR APPROVAL PRIOR TO PURCHASING.
  - ALL SUPPLIES FOR LAVATORIES AND WATER CLOSETS SHALL BE 3/8"x1/2" ANGLE W/ STOPS. SUPPLIES FOR ALL TRAPS SHALL BE 17 GAUGE C.P.B. WITHOUT CLEANOUT.
  - PROVIDE TRAP PRIMERS ON ALL FLOOR DRAINS EXCEPT SHOWER DRAINS.



1 | TYPICAL PLUMBING RISER DIAGRAMS  
SCALE: NONE

**PUBLIC SPACES - PLUMBING FIXTURES SCHEDULE**

SEE ARCHITECTURAL PLANS FOR EXACT HEIGHT AND LOCATION OF ALL FIXTURES									
LOCATION	FIXTURE	MANUF./MODEL	TRIM	W	V	HW	CW	DESCRIPTION	
P-1	WATER CLOSET	KOHLER.....K-4330	SLOAN REGAL.....	4"	2"	-	1"	VITREOUS CHINA, WALL MOUNTED, 1.6 GPF AUTOMATIC FLUSH VALVE, WHITE OPEN FRONT SEAT. SEAT - CHURCH 9500C CARRIER - WADE 520 SERIES	
P-1A	WATER CLOSET	KOHLER.....K-4330	SLOAN REGAL.....	4"	2"	-	1"	ADA, VITREOUS CHINA, WALL MOUNTED, 17" HIGH, 1.6 GPF AUTOMATIC FLUSH VALVE, WHITE OPEN FRONT SEAT. SEAT - CHURCH 9500C CARRIER - WADE 520 SERIES	
P-2	LAVATORY	KOHLER-SOHO-K-2054-1	KOHLER.....	2"	2"	1/2"	1/2"	VITREOUS CHINA, WALL HUNG W/ 4" CENTERSET WITH AUTOMATIC FAUCET GRID STRAINER - MCGUIRE 155A 3/8" SUPPLIES - MCGUIRE 167LK WITH STOPS P-TRAP - MCGUIRE 8872 WITH SET SCREW ESCUTCHEON CARRIER - WADE W-520 OR PROVIDE WALL PLATE AS REQUIRED. INSULATION KIT - TRUEBRO #102W	
P-2A	LAVATORY	KOHLER-SOHO-K-2054-1	KOHLER.....	2"	2"	1/2"	1/2"	ADA, VITREOUS CHINA, WALL HUNG W/ 4" CENTERSET WITH SINGLE LEVER FAUCET GRID STRAINER - MCGUIRE 155A 3/8" SUPPLIES - MCGUIRE 167LK WITH STOPS P-TRAP - MCGUIRE 8872 WITH SET SCREW ESCUTCHEON CARRIER - WADE W-520 OR PROVIDE WALL PLATE AS REQUIRED. INSULATION KIT - TRUEBRO #102W	
P-2B	LAVATORY	KOHLER-CAXTON-K-2210	KOHLER.....	2"	2"	1/2"	1/2"	VITREOUS CHINA, COUNTERTOP W/ AUTOMATIC FAUCET GRID STRAINER - MCGUIRE 155A 3/8" SUPPLIES - MCGUIRE 167LK WITH STOPS P-TRAP - MCGUIRE 8872 WITH SET SCREW ESCUTCHEON CARRIER - WADE W-520 OR PROVIDE WALL PLATE AS REQUIRED. INSULATION KIT - TRUEBRO #102W	
P-3	URINAL	TOTO.....UT104E(V)	SLOAN.....	2"	2"	-	3/4"	WALL HUNG, WITH BACK SPUD INLET, STAINLESS STEEL DRAIN COVER AND .5 GPF LOW CONSUMPTION AUTOMATIC FLUSH VALVE. CARRIER - WADE W400-AM11	
P-3A	ADA URINAL	TOTO.....UT104E(V)	SLOAN.....	2"	2"	-	3/4"	ADA, WALL HUNG, WITH BACK SPUD INLET, STAINLESS STEEL DRAIN COVER AND .5 GPF LOW CONSUMPTION AUTOMATIC FLUSH VALVE. CARRIER - WADE W400-AM11	
P-4	BI-LEVEL DRINKING FOUNTAIN	ELKAY.....ERFPM8K HALSEY TAYLOR.....HRFER-0 HAWKS.....H1109.8 OASIS.....M85BPM		2"	2"	-	1/2"	ADA, WALL HUNG, BARRIER FREE, BI-LEVEL 8 GPH, FRONT AND SIDE PUSH PADS, BUBBLE WITH FLEXIBLE GUARD, STAINLESS STEEL FINISH. MOUNT ONE UNIT AT ADA HEIGHT. 1 1/4" P-TRAP - MCGUIRE 8872, 17 GA., 3/8" SUPPLIES - MCGUIRE 165LK CARRIER - PROVIDE ANCHOR BOLTS IN WALL AND ATTACH TO WALL PLATE	
P-5	TWO-COMP. SINK (EMPLOYEE BREAKROOM)	ELKAY.....LRAD2521X5 1/2"	MOEN.....7425 AMER.STAN.....4175.500.002 DELTA.....84410LF KOHLER.....K-15172-XF-CP	2"	2"	1/2"	1/2"	ADA, STAINLESS STEEL, COUNTERTOP, ONE COMPARTMENT SINK, 22x33, 7 1/2" DEEP BOWL WITH KITCHEN FAUCET AND HOSE SPRAY 1 1/2" P-TRAP - MCGUIRE 8921 1/2" SUPPLIES - MCGUIRE 158LK W/ STOP STRAINER: AMER.STAN.....4331.013.002 DELTA.....72010 KOHLER.....K-8801-CP	
P-6	MOP SINK	FIAT.....MSBID2424-100 MUSTEE.....62M	MOEN.....8230 AMER.STAN.....8344.112.002 DELTA.....28T9 FIAT.....830-AA-000	3"	2"	1/2"	1/2"	MOP BASIN W/ FIAT HOSE & HOSE BRACKET #832-AA; MOP HANGER #889-CC; BUMPERGUARD PLATE # E-77-AA	
P-7	SHOWER TRIM	SYMMONS - 4701-X-2-P/N4000-BODY		3"	2"	1/2"	1/2"	SHOWER SYSTEM WITH TEMPTROL PRESSURE BALANCING/MIXING VALVE. VALVE INCLUDE INTEGRAL STOPS.	
P-7A	ADA SHOWER TRIM	SYMMONS - 4705-X-2-P/N4000-BODY-P/N458E-BODY.		3"	2"	1/2"	1/2"	ADA, SHOWER SYSTEM WITH TEMPTROL PRESSURE BALANCING/MIXING VALVE, DUAL OUTLET DIVERTER. VALVE INCLUDE INTEGRAL STOPS.	

- NOTES:
- PROVIDE TRUEBRO HANDI-LAV GUARD INSULATION KIT FOR DRAIN LINE, TRAP & SUPPLIES ON ALL LAVATORIES FOR HANDICAP USE.
  - PROVIDE .5 GPM MAX. FOR LAVATORIES.
  - ALL SUPPLIES SHALL BE CHROME PLATED BRASS, LOOSE KEY TYPE. PLASTIC SUPPLIES ARE NOT ACCEPTABLE.
  - CHROME PLATED BRASS NIPPLES SHALL BE USED FOR CONNECTION OF ALL SUPPLIES. ALL EXPOSED PIPING SHALL BE CHROME PLATED.
  - PROVIDE ALL BOLT CAPS, STRAINERS, TRAPS, SUPPLIES, ETC. NECESSARY FOR A COMPLETE INSTALLATION.
  - SUPPLIES FOR WATER CLOSETS SHALL BE 10" A.F.F. TO AVOID TILE BASE.
  - ALL VITREOUS CHINA FIXTURES SHALL BE WHITE.
  - G.C. TO PROVIDE FINAL PLUMBING FIXTURE CUT SHEETS TO ARCHITECT & OWNER FOR APPROVAL.
  - ALL FAUCETS, DRAINS, TRIM, ETC. SHALL HAVE POLISHED CHROME FINISH. NO EXCEPTIONS.
  - COORDINATE ALL FIXTURES PRIOR TO ORDERING.

**GUESTROOMS - PLUMBING FIXTURES SCHEDULE**

FOR REFERENCE AND CONNECTIONS. ALL GUESTROOM FIXTURES ARE BY STONHILL AND TAYLOR									
LOCATION	FIXTURE	STONEHILL	W	V	HW	CW			
WC	WATER CLOSET	TAG - P-9	3"	2"	-	1/2"			
WC-H	ADA WATER CLOSET	TAG - P-9	3"	2"	-	1/2"			
LAV	LAVATORY	TAG - P-1	2"	2"	1/2"	1/2"			
LAV-H	ADA LAVATORY	TAG - P-2	2"	2"	1/2"	1/2"			
SINK	SINK	TAG - P-15	2"	2"	1/2"	1/2"			
SH	SHOWER	TAG - P-10, P-11	2"	2"	1/2"	1/2"			
SH-H	ADA SHOWER	TAG - P-3, P-4 & P-6	2"	2"	1/2"	1/2"			
TUB	TUB	TAG - P-16, P-08	2"	2"	1/2"	1/2"			

NOTES:

- SEE STONHILL AND TAYLOR PLUMBING FIXTURE SCHEDULE FOR ALL GUESTROOMS FIXTURES SPECIFICATIONS.
- SUBMIT ALL FIXTURES TO MARRIOTT, ARCHITECT & OWNER FOR APPROVAL PRIOR TO PURCHASING.
- ALL SUPPLIES FOR LAVATORIES AND WATER CLOSETS SHALL BE 3/8"x1/2" ANGLE W/ STOPS PROVIDED BY PLUMBING CONTRACTOR.
- ALL SUPPLIES FOR SINK SHALL BE 1/2" ANGLE WITH STOPS, PLASTIC SUPPLIES ARE NOT ACCEPTABLE.
- ALL TRAPS SHALL BE 17 GAUGE C.P.B. WITHOUT CLEANOUT PROVIDED BY PLUMBING CONTRACTOR.
- PROVIDE TRANSFORMERS FOR SENSOR OPERATED FAUCETS WHERE INDICATED AS REQUIRED.

Jeffrey A. Crabtree  
No. 13262  
LICENSED PROFESSIONAL ENGINEER

---

Prepared For: **119 Development, LLC**  
P.O. Box 7468  
Portland, ME 04112

---

Consultant: **CRABTREE ENGINEERING**  
978 AMELIA COVE  
COLLIERVILLE, TN 38017  
PLUMBING: bob@crabtreeeng.com

---

Architect: **ARCHETYPE architects**  
48 Union Wharf Portland, Maine 04101  
(207) 772-6022 Fax (207) 772-4056

---

Project: **PRESS HOTEL**  
390 CONGRESS STREET  
PORTLAND, ME 04101

---

Revisions:  
1 | 13\_07-01 | 30% Marriott Submission  
2 | 13\_09-09 | 60% Marriott Sub. & Pric.  
3 | 13\_10-14 | Issue for Bid & Marriott Revw.

---

Date: 13 October 2013  
Scale: NONE

**PLUMBING NOTES AND SCHEDULES**

# P9.00