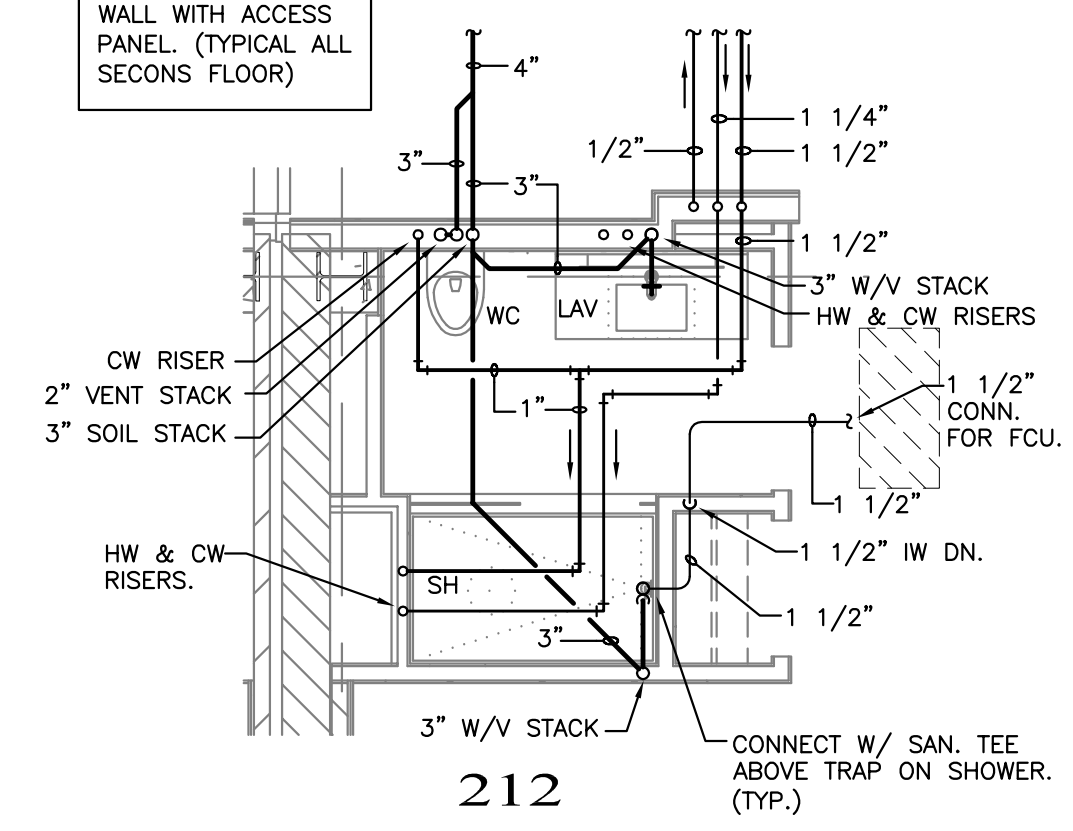
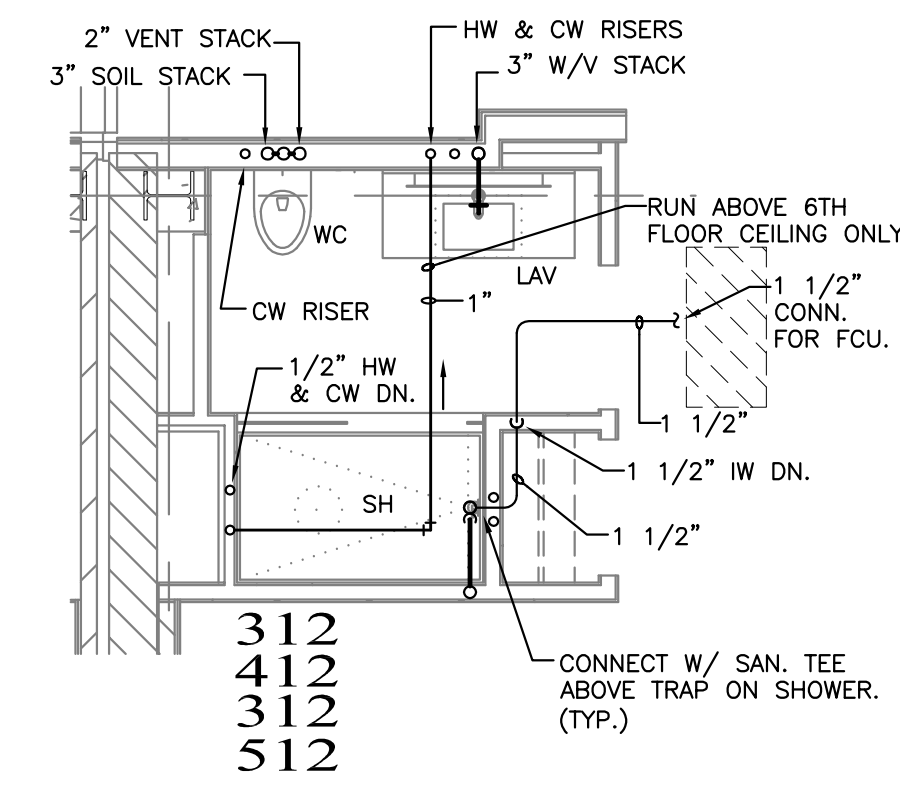


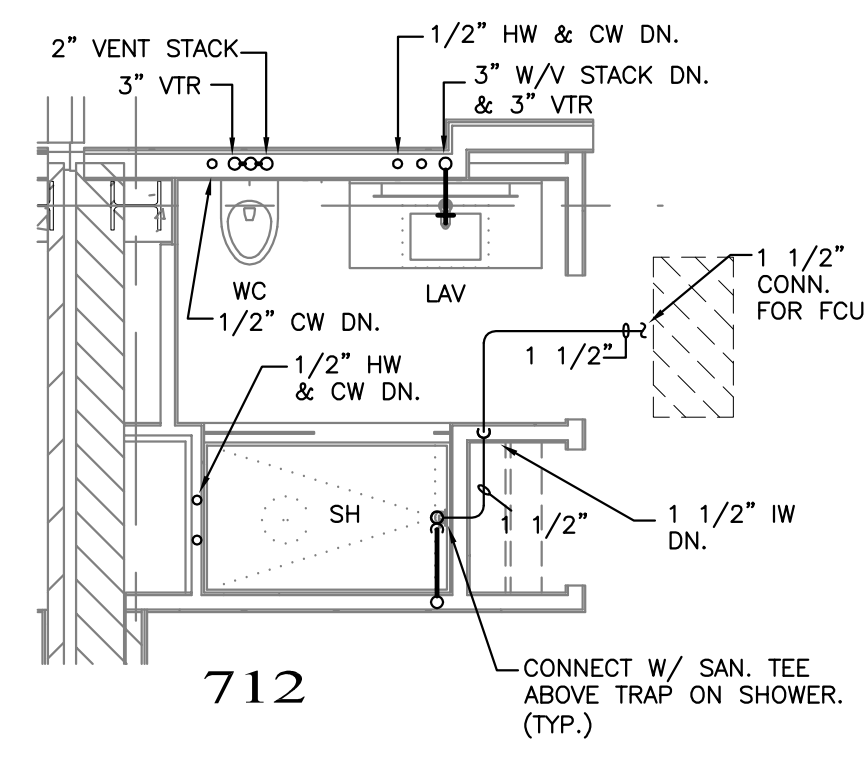
WATER RISERS DN. BALL VALVES IN WALL WITH ACCESS PANEL. (TYPICAL ALL SECONDS FLOOR)



212



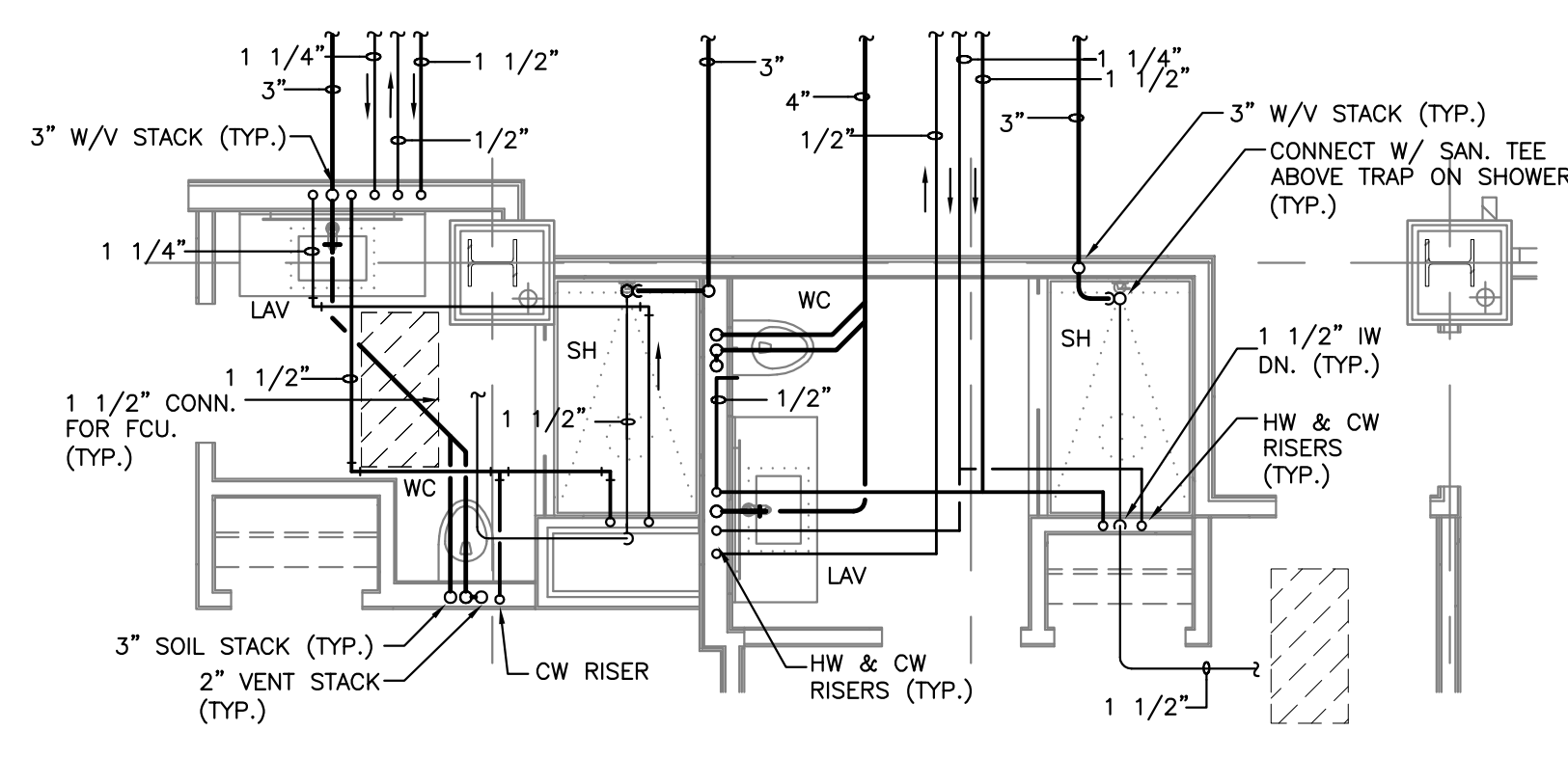
312
412
312
512



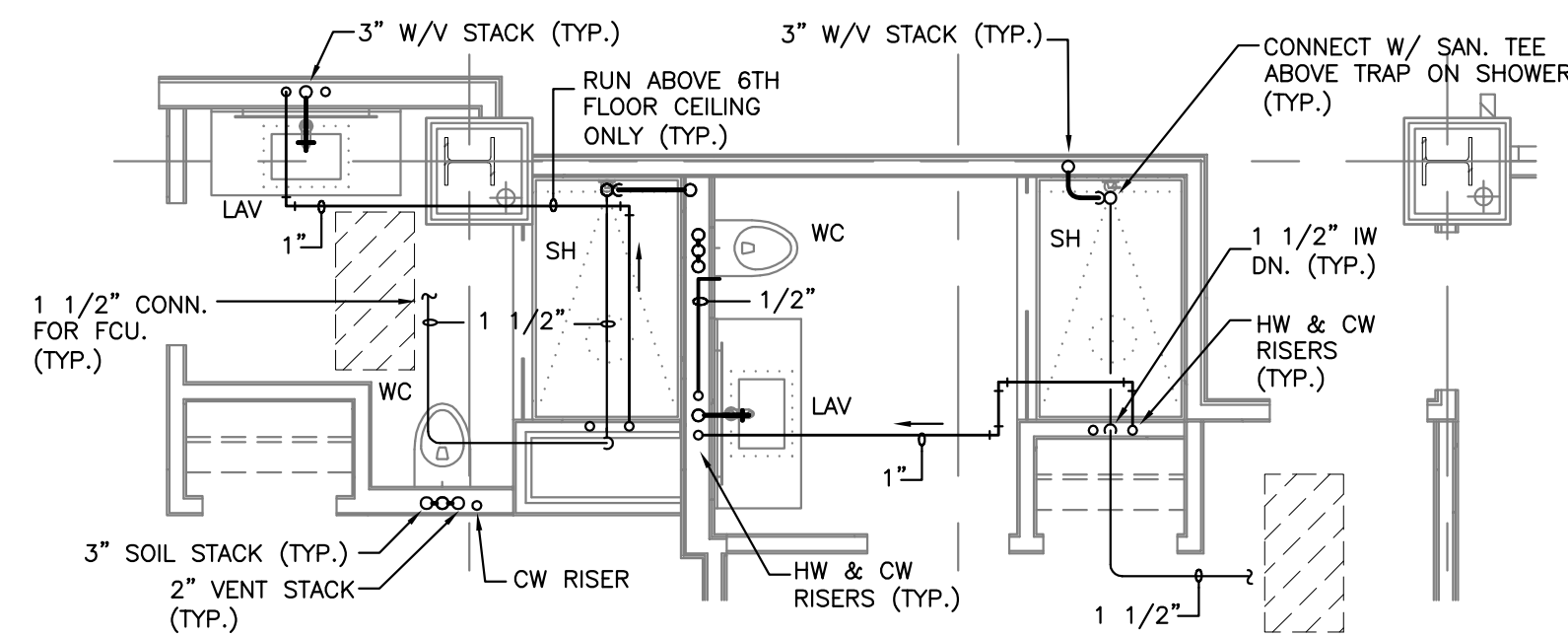
712

1 | TYPICAL UNITS - PLUMBING
SCALE: 1/4"=1'-0"

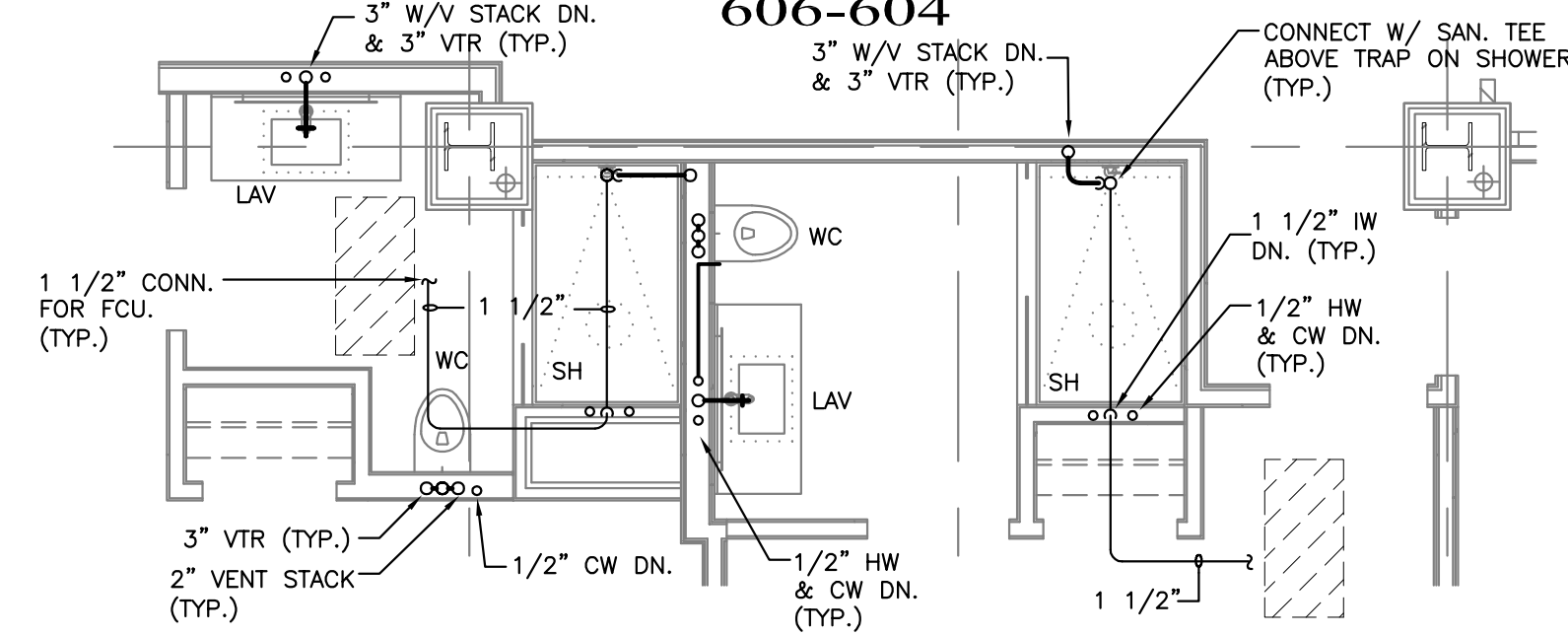
WATER RISERS DN. BALL VALVES IN WALL WITH ACCESS PANEL. (TYPICAL ALL SECONDS FLOOR)



206-204



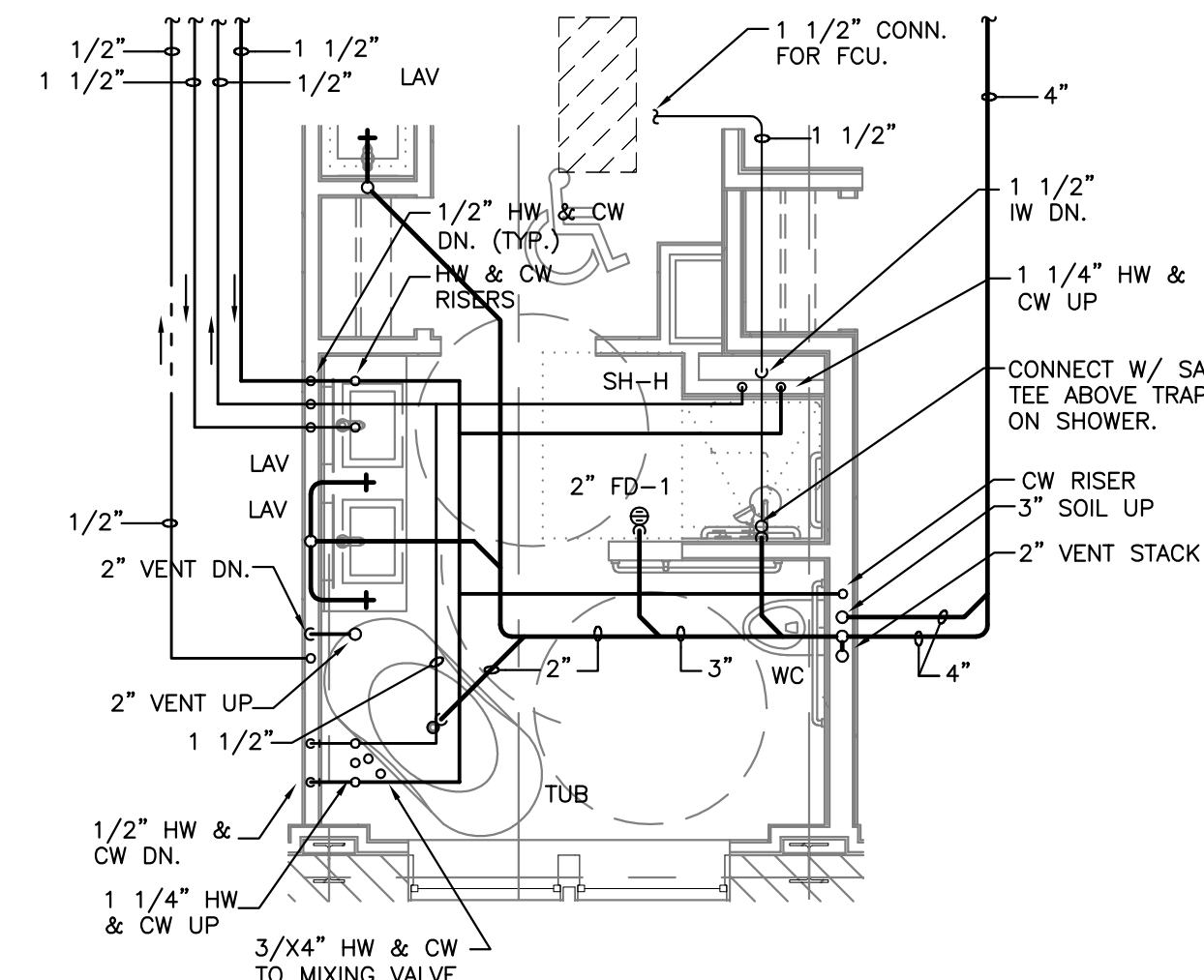
306-304
406-404
506-504
606-604



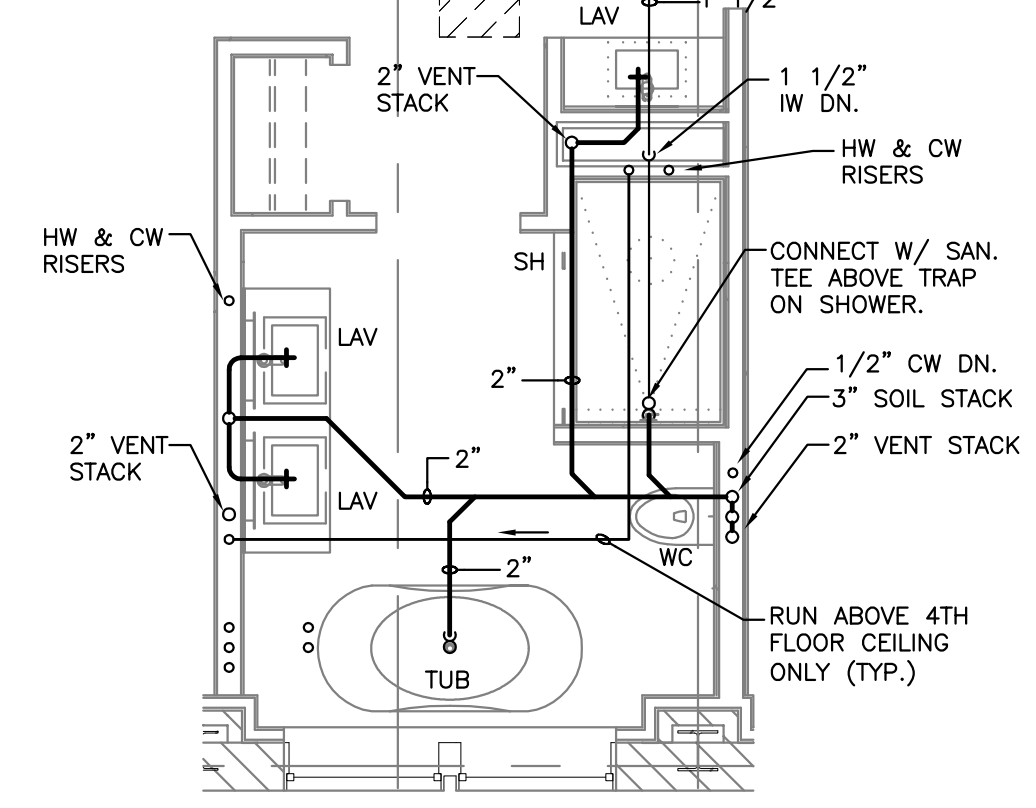
706-704

2 | TYPICAL UNITS - PLUMBING
SCALE: 1/4"=1'-0"

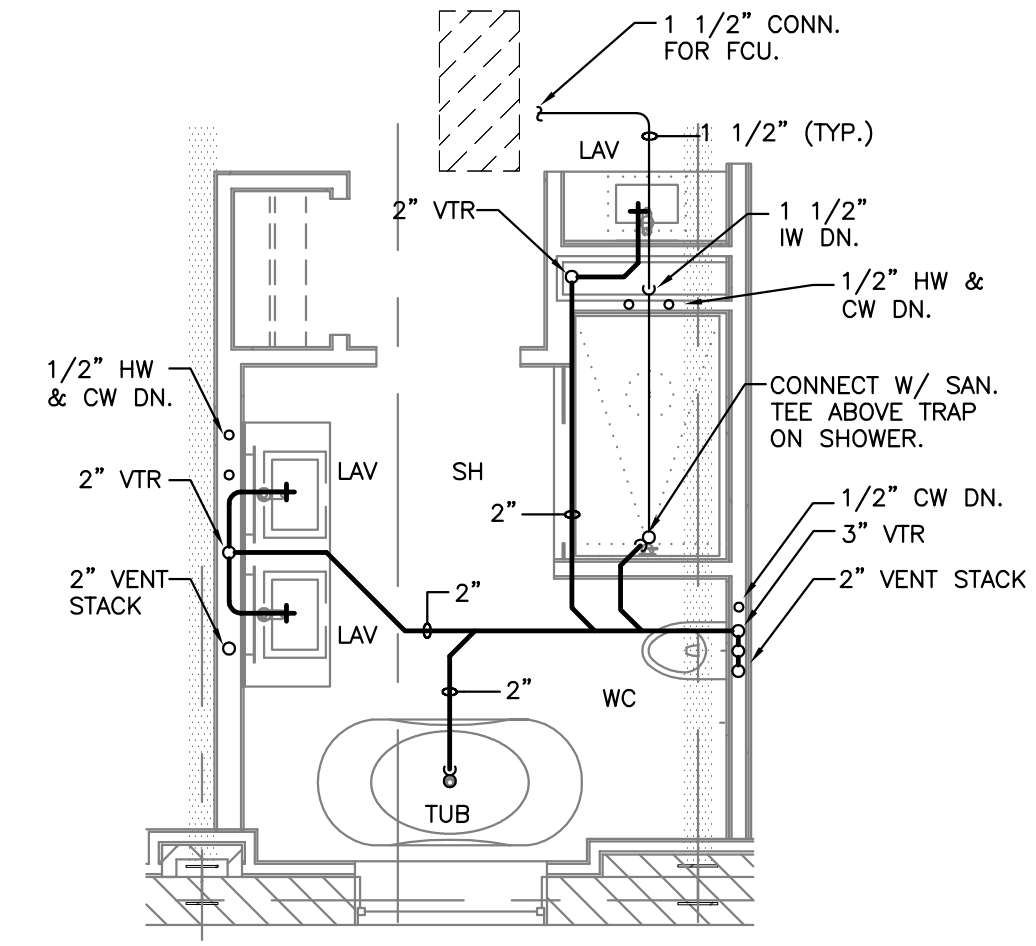
WATER RISERS DN. BALL VALVES IN WALL WITH ACCESS PANEL. (TYPICAL ALL SECONDS FLOOR)



222



322

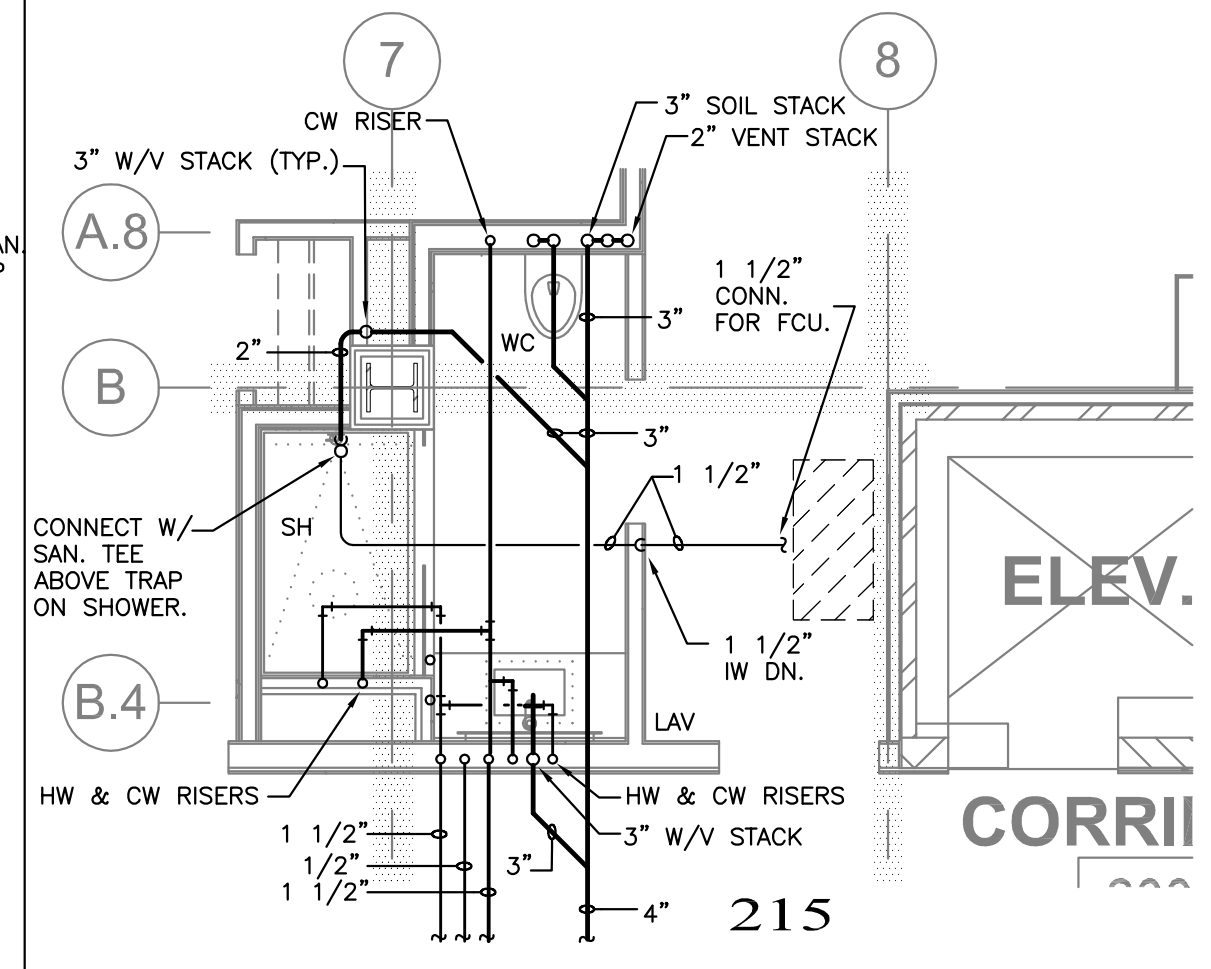


522

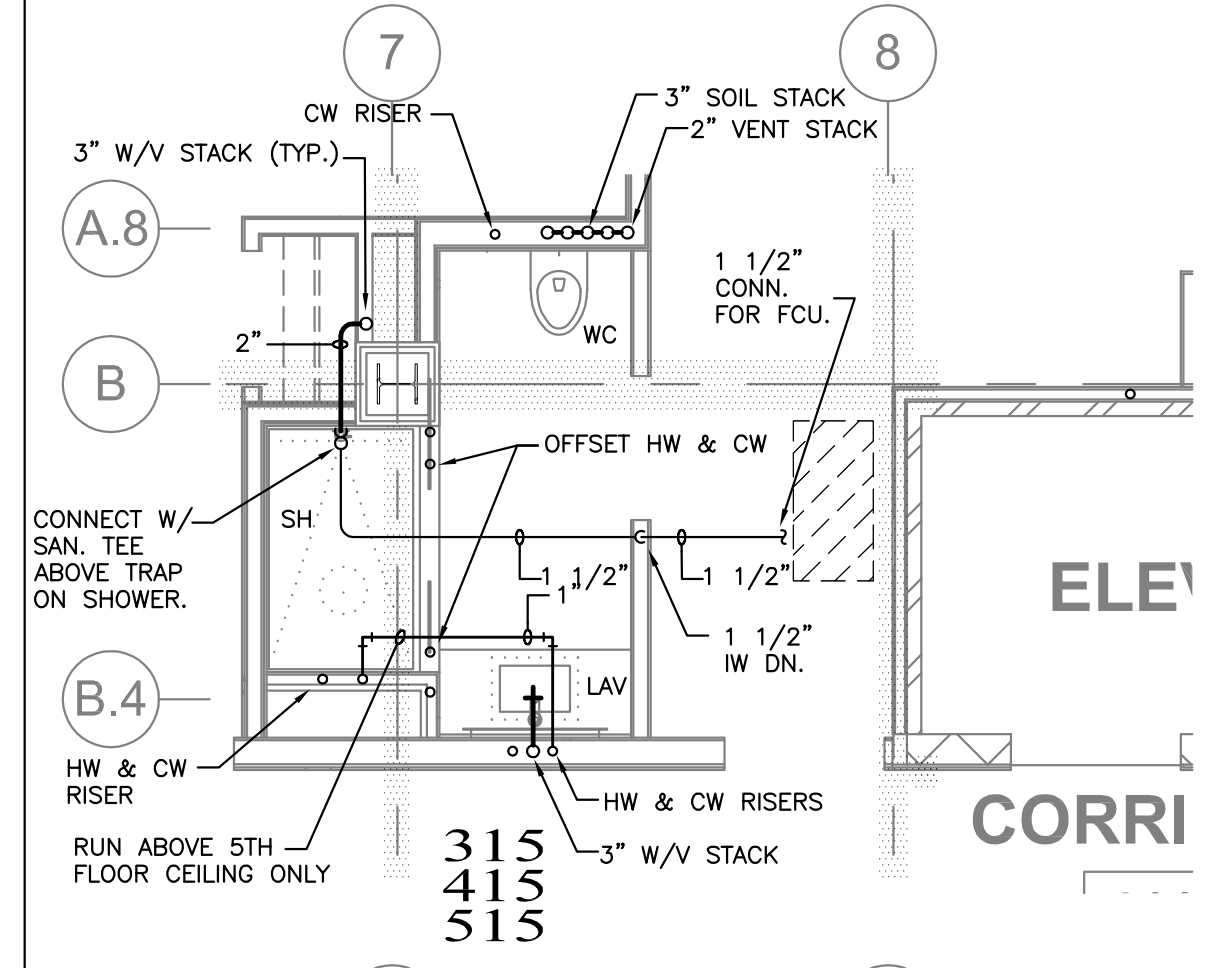
3 | TYPICAL UNITS - PLUMBING
SCALE: 1/4"=1'-0"

NOTE: PROVIDE WCO AT BASE OF ALL WASTE STACKS.

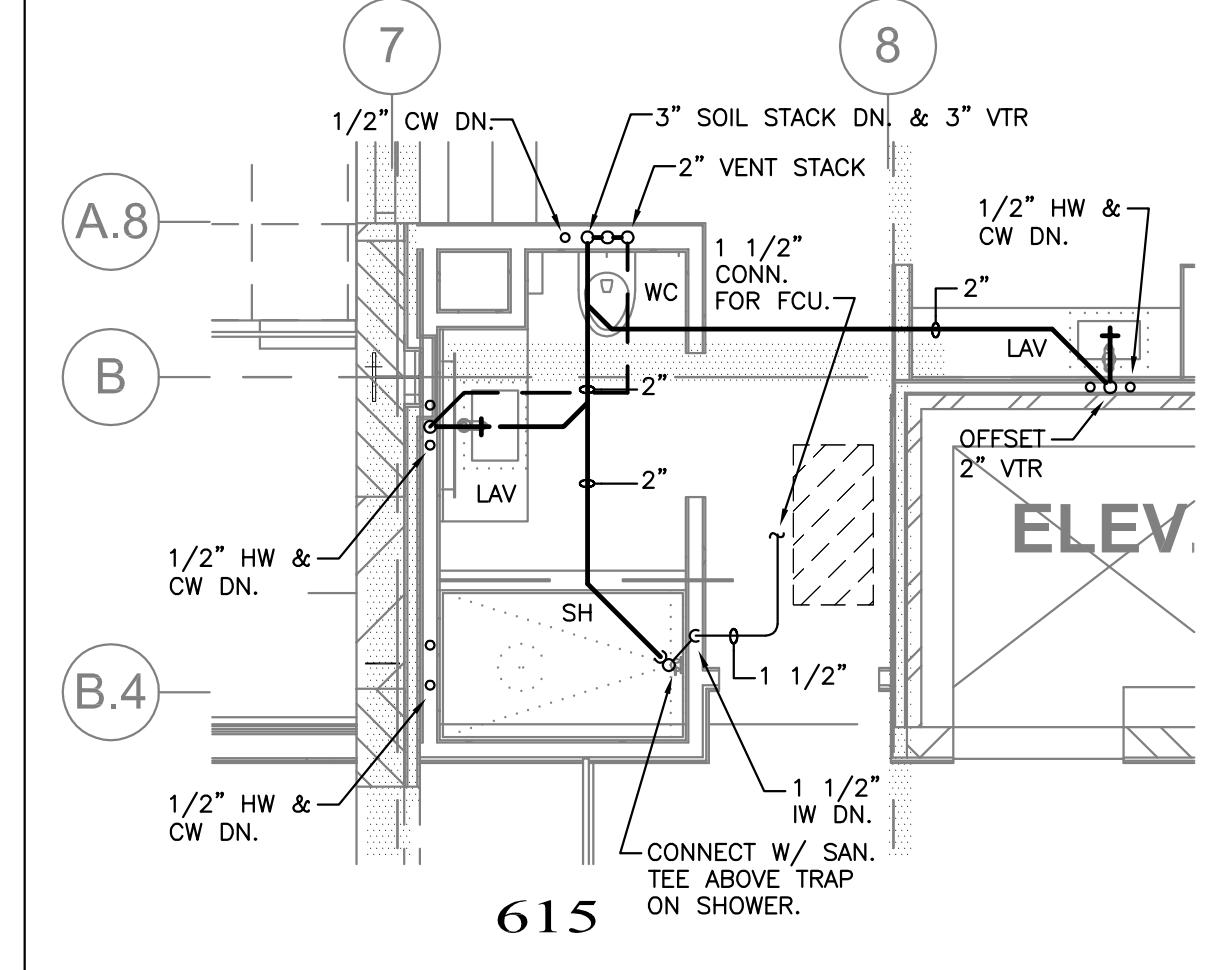
WATER RISERS DN. BALL VALVES IN WALL WITH ACCESS PANEL. (TYPICAL ALL SECONDS FLOOR)



215



315
415
515



615

4 | TYPICAL UNITS - PLUMBING
SCALE: 1/4"=1'-0"

STATE OF MAINE
JEFFREY A. CRABTREE
No. 15282
LICENSED PROFESSIONAL ENGINEER

Prepared For: **119 Development, LLC**
P.O. Box 7468
Portland, ME 04112

Consultant: **CRABTREE ENGINEERING**
278 AMELIA COVE
COLLIERVILLE, TN 38017
PLUMBING: bobbycrabtree@gmail.com

Architect: **ARCHETYPE architects**
48 Union Wharf Portland, Maine 04101
(207) 772-6022 Fax (207) 772-4056

Project: **PRESS HOTEL**
390 CONGRESS STREET
PORTLAND, ME 04101

Revisions:
1 13_07-01 30% Marriott Submission
2 13_09-09 60% Marriott Sub. & Pric.
3 13_10-14 Issue for Bid & Marriott Rev.

Date: 13 October 2013
Scale: 1/4" = 1'-0"

TYPICAL GUESTROOMS PLUMBING

P7.03