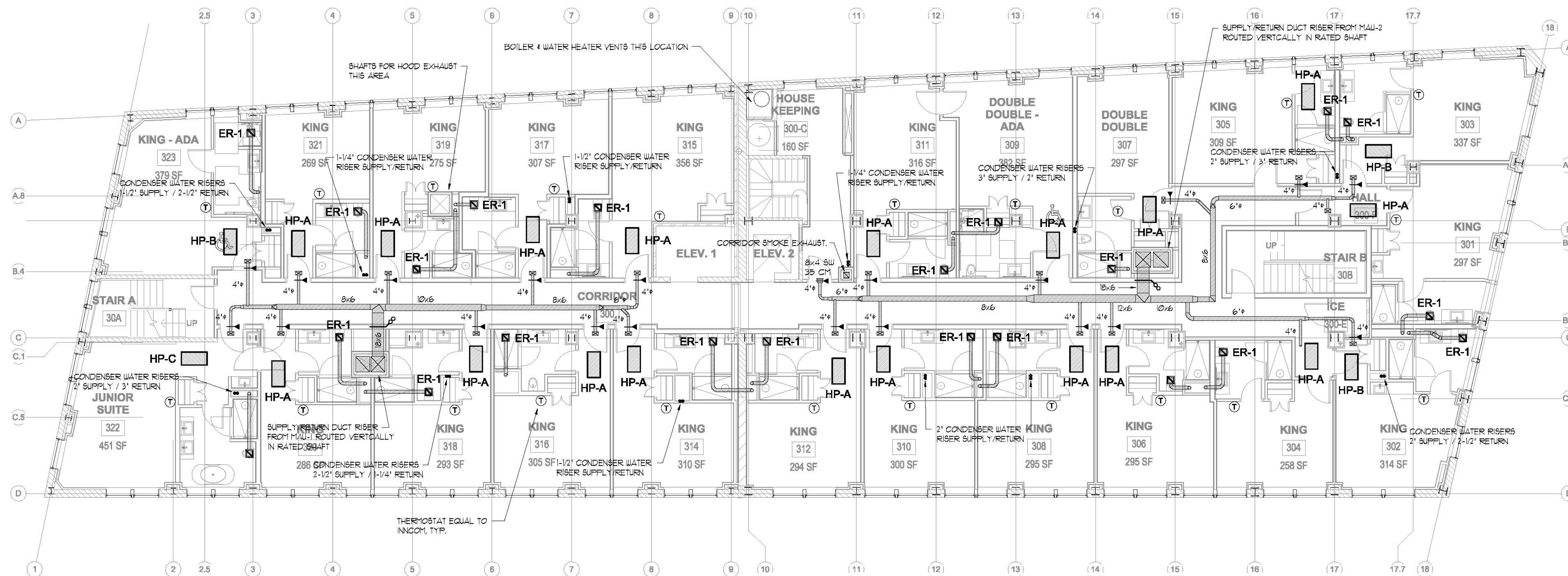
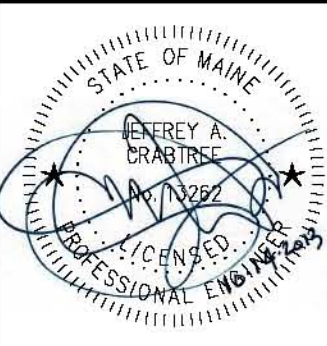
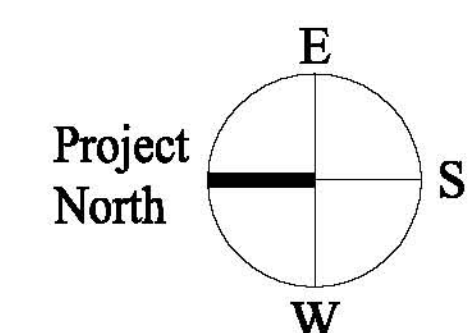


SCOPE OF WORK AT GUEST ROOMS:

1. EXTEND 3/4" CONDENSER WATER SUPPLY AND RETURN TO HP-A/HP-B FROM ADJACENT RISER.
2. EXTEND 1" CONDENSER WATER SUPPLY AND RETURN TO HP-C FROM ADJACENT RISER.
3. REFER TO PIPING DIAGRAM DETAIL FOR VALVES AND ACCESSORIES.
4. REFER TO PLUMBING PLANS FOR CONDENSATE DRAIN PIPING.
5. SUSPEND HP UNITS FROM STRUCTURE WITH THREADED ROD AND SPRING ISOLATORS.
6. PROVIDE A SUPPLY REGISTER (24x6 SW) AT FACE OF FURRED ENTRY FOR EACH HEAT PUMP.
7. EXTEND SHEETMETAL DUCT FROM HP TO SUPPLY REGISTER. TRANSITION DUCT FROM HP DISCHARGE TO REGISTER. INSULATE DUCT WITH 1/2" THICK CLOSED CELL ELASTOMERIC INSULATION.
8. PROVIDE A HINGED ACCESS PANEL BELOW EACH HP UNIT. ACCESS PANEL SHALL EXCEED UNIT DIMS BY 4" ON ALL SIDES. ACCESS PANEL SHALL BE PAINTED AS DIRECTED BY THE ARCHITECT.
9. PROVIDE AN 18x12 R2 INSIDE AND OUT AT 8" AFF IN WALL OF EACH CLOSET.
10. PROVIDE A 24x12 FILTERED RETURN GRILLE IN THE CEILING OF EACH CLOSET.
11. PROVIDE AN INCOM E528 THERMOSTAT IN EACH GUEST ROOM. THE THERMOSTAT SHALL INCLUDE AN OCCUPANCE SENSOR, WIRED DOOR SWITCH AND ECOMODE SWITCH.
12. PROVIDE A 6x6 AMERICAN ALDES MODEL C6R AT ROOM ENTRY AS INDICATED TO DELIVER 35 CFM TO EACH GUEST ROOM.
13. PROVIDE A 6x6 AMERICAN ALDES ODEL CER AT EACH BATHROOM AS INDICATED TO EXHAUST 35 CFM.
14. EXTEND A 4" DUCT FROM EACH TOILET EXHAUST. TURN DUCT UP 22° IN A SHEETMETAL RISER DUCT.
15. THE RISER DUCT SHALL BE LOCATED IN A RATED SHAFT BY THE GC AND SHALL EXTEND FROM THE 2ND FLOOR TO THE ROOF AND TERMINATE AT AN EXHAUST FAN.



THIRD FLOOR PLAN - HVAC
SCALE: 1/8"=1'-0"



Prepared For:
119 DEVELOPMENT LLC

Mechanical Engineer:
Crabtree Engineering
278 Amelia Cove
Collierville, Tennessee 38017
jcc98@bellsouth.net

Architect:
ARCHETYPE
a.r.c.h.i.t.e.c.t.s
48 Union Wharf Portland, Maine 04101
(207) 772-6022 Fax (207) 772-4056

Project:
PRESS HOTEL
390 CONGRESS STREET
PORTLAND, MAINE

Revisions:	Date:	Description:
1	13-07-01	30% Marriott Submission
2	13-09-09	60% Marriott Sub. & Pric.
3	13-10-14	Issue for Bid & Marriott Revw

Date:
08 OCT 13

Scale:
1/8" = 1'-0"

**THIRD FLOOR
HVAC PLAN**

M3.00