

Prepared For:
119 DEVELOPMENT LLC

Mechanical Engineer:
Crabtree Engineering
278 Amalia Cove
Collierville, Tennessee 38017
jce98@bellsouth.net

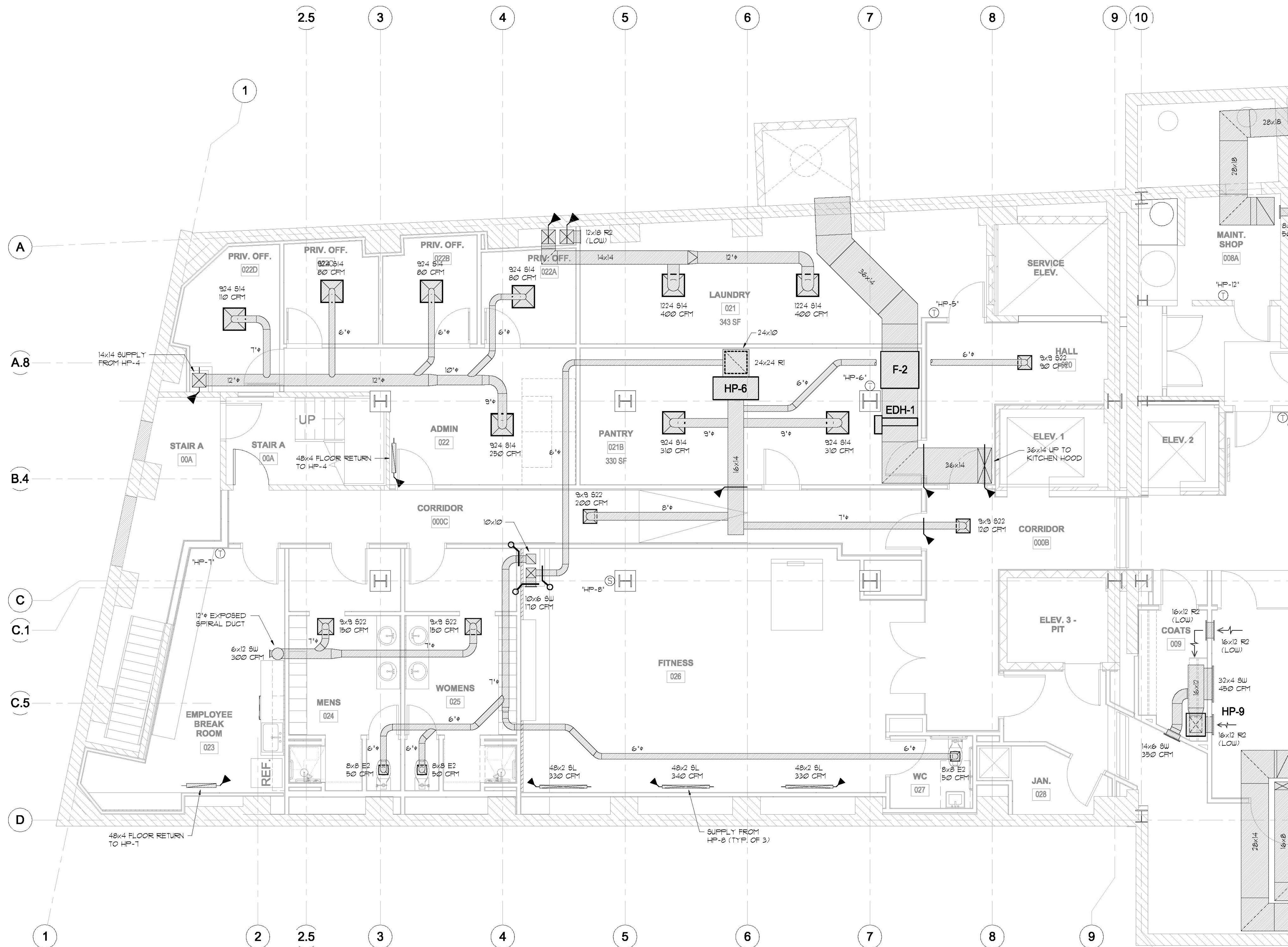
Architect:
ARCHETYPE architects
48 Union Wharf Portland, Maine 04101
(207) 772-6022 Fax (207) 772-4056

Project:
PRESS HOTEL
390 CONGRESS STREET
PORTLAND, MAINE

Revisions:
1 | 13-07-01 | 30% Marriott Submission
2 | 13-09-09 | 60% Marriott Sub. & Pric.
3 | 13-10-14 | Issue for Bid & Marriott Revw

Date:
08 OCT 13
Scale:
1/4" = 1'-0"
**ENLARGED
LOWER LEVEL
PLAN - HVAC**

M0.21



ENLARGED LOWER LEVEL PLAN - HVAC
SCALE: 1/4"=1'-0"

