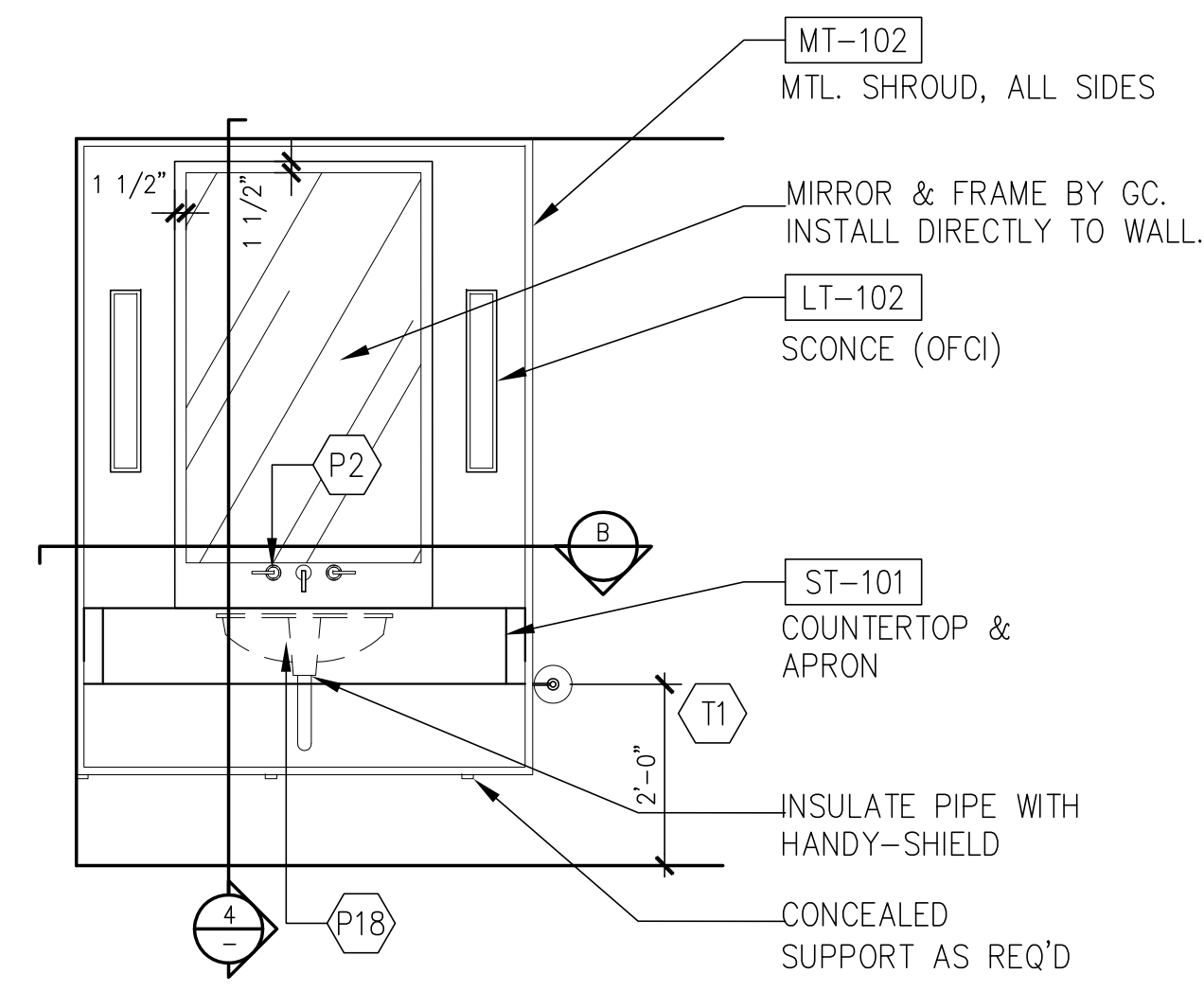
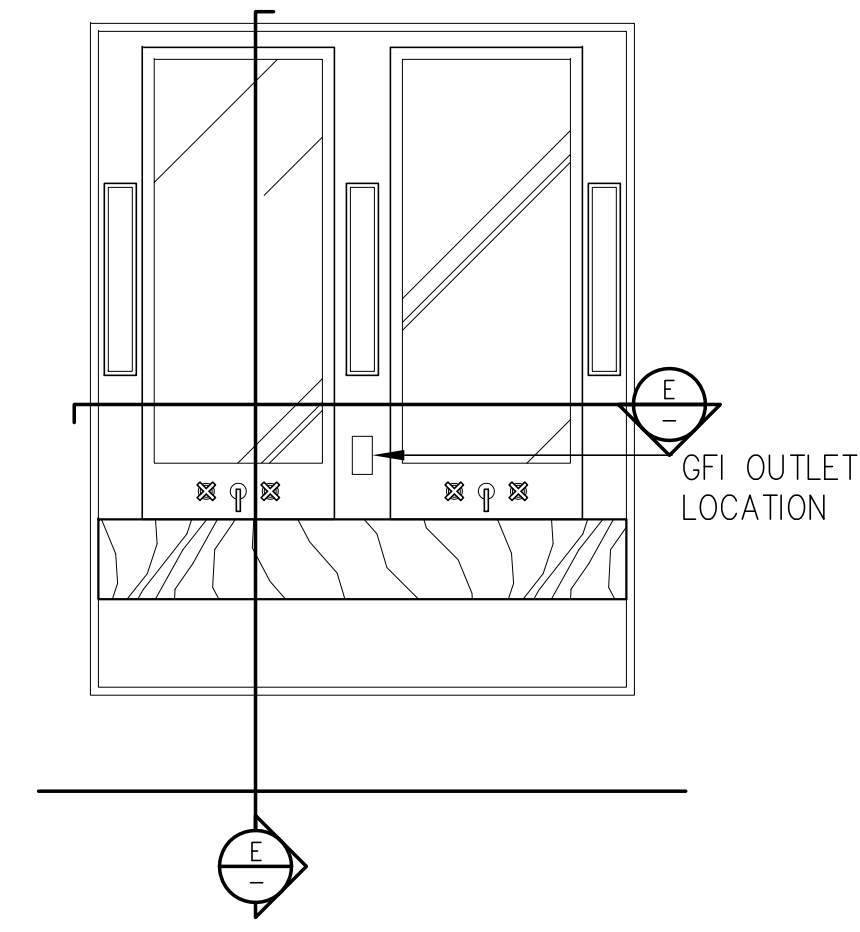


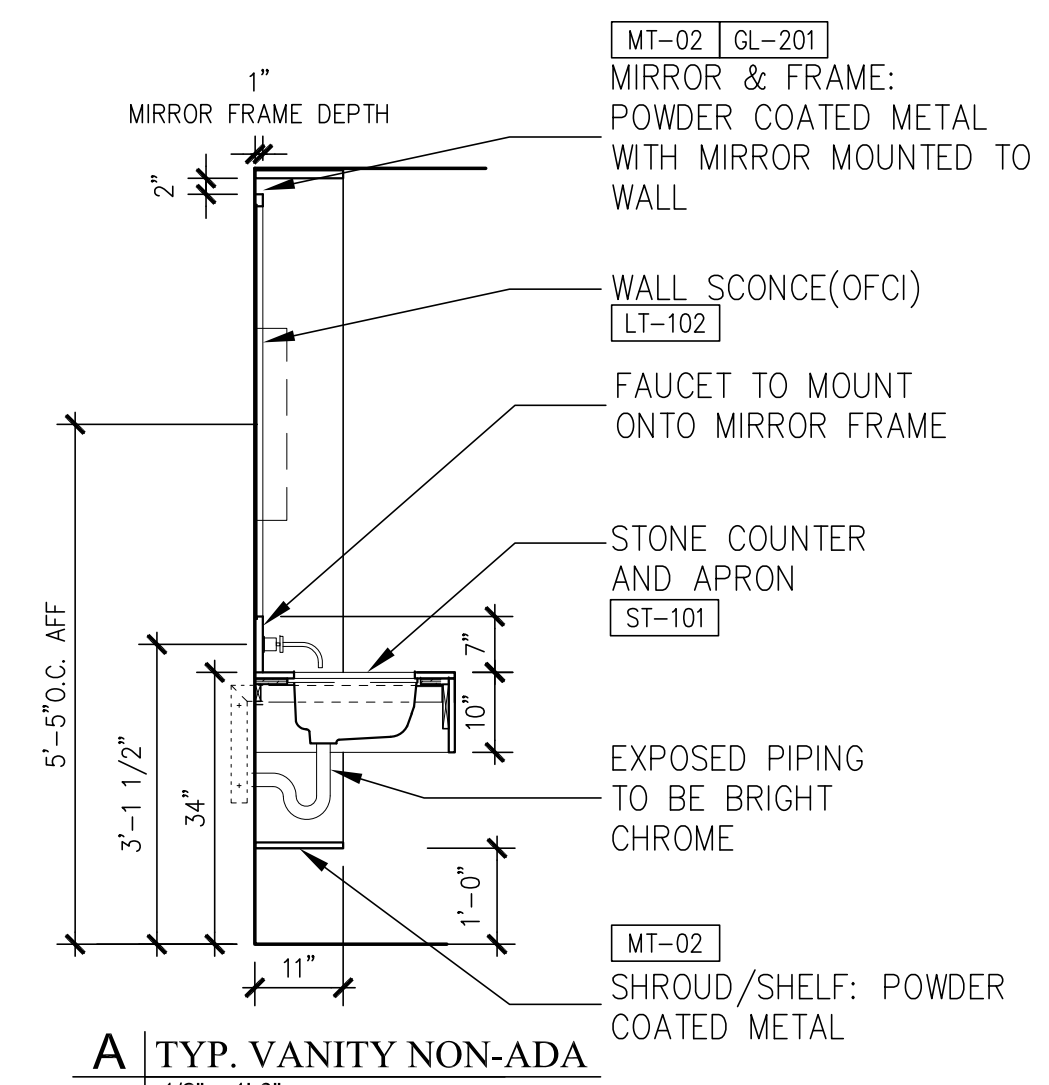
1 | VANITY - CANTILEVERED CONDITION
1/2" = 1'-0"



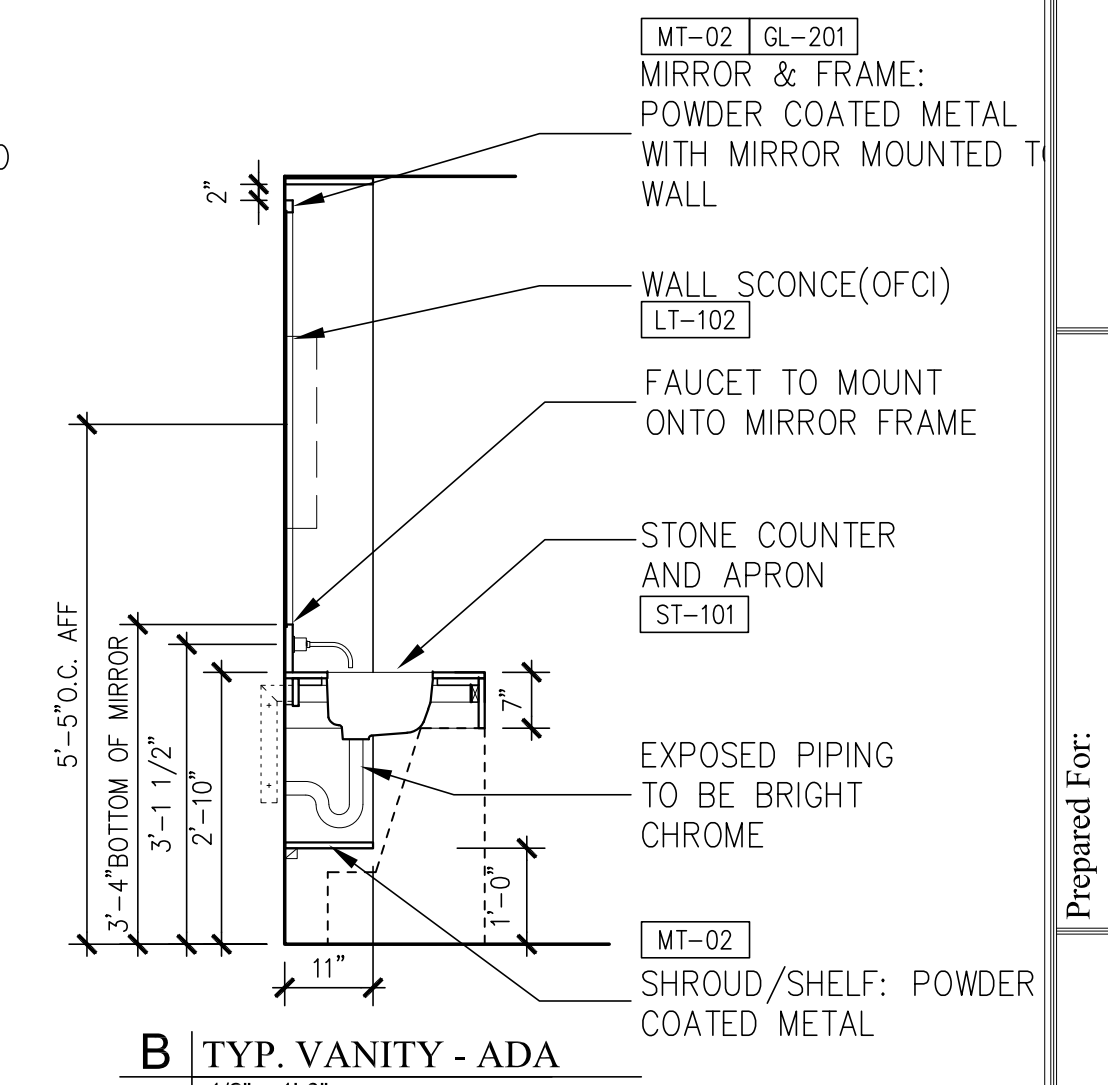
2 | VANITY - SIDE MOUNTED
1/2" = 1'-0"



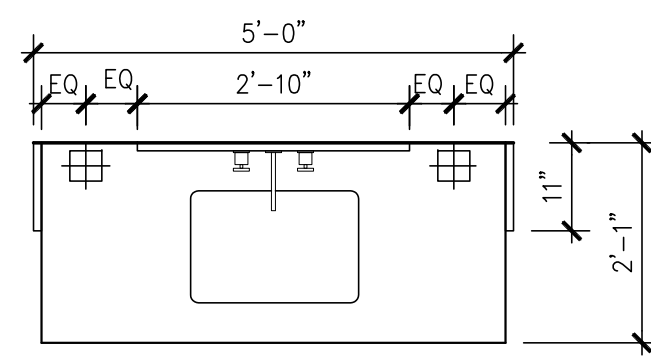
3 | VANITY - DOUBLE SINK
1/2" = 1'-0"



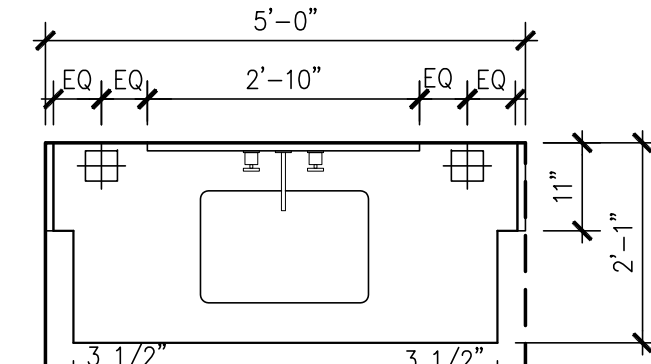
A | TYP. VANITY NON-ADA
1/2" = 1'-0"



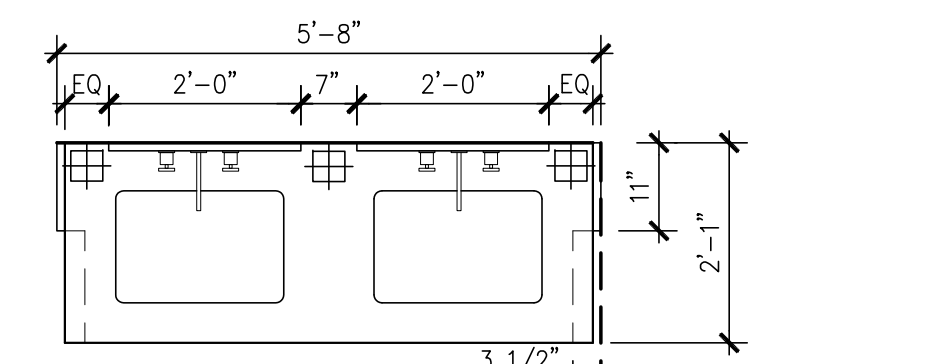
B | TYP. VANITY - ADA
1/2" = 1'-0"



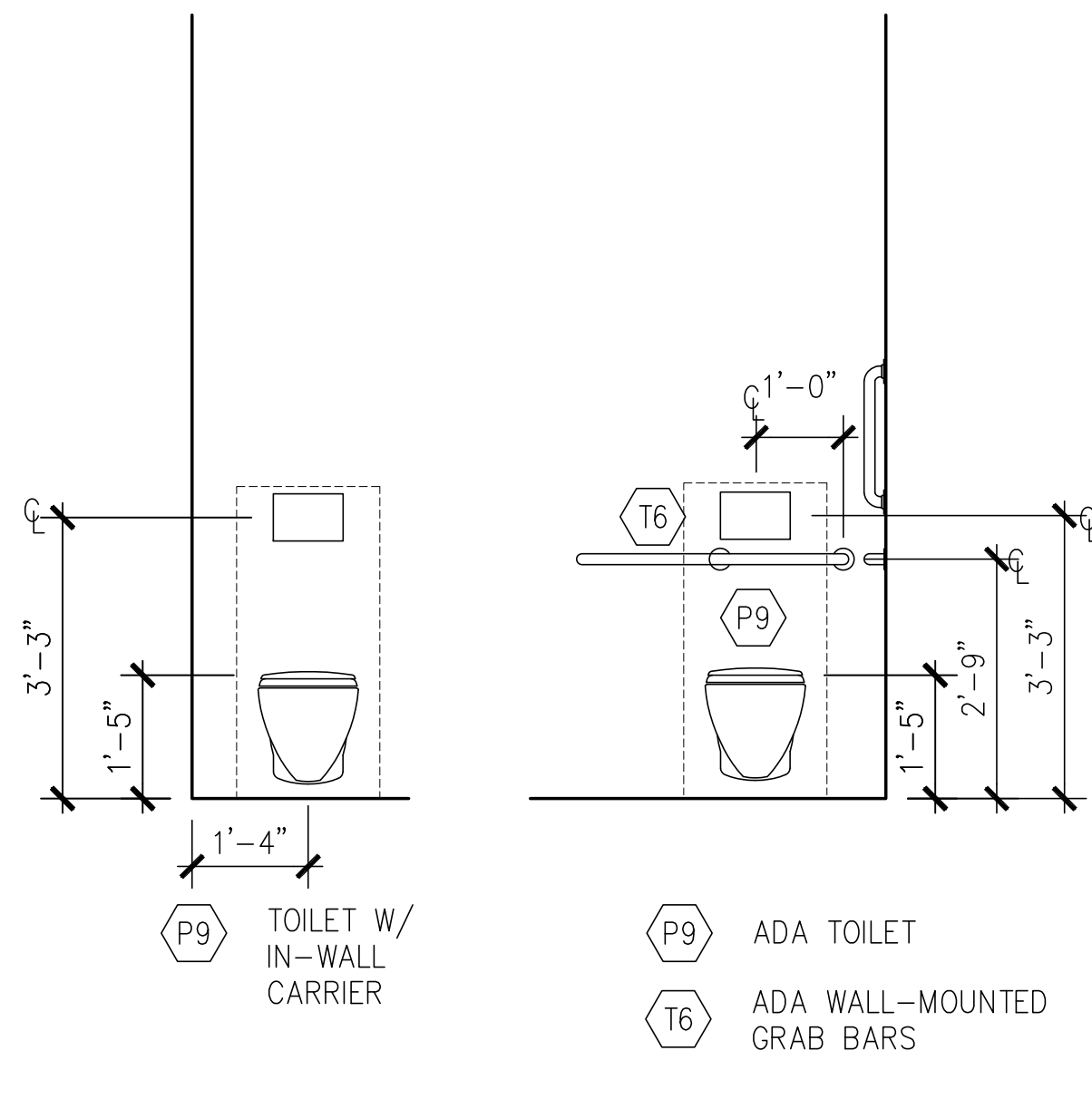
C | VANITY PLAN - CANTILEVERED CONDITION
1/2" = 1'-0"



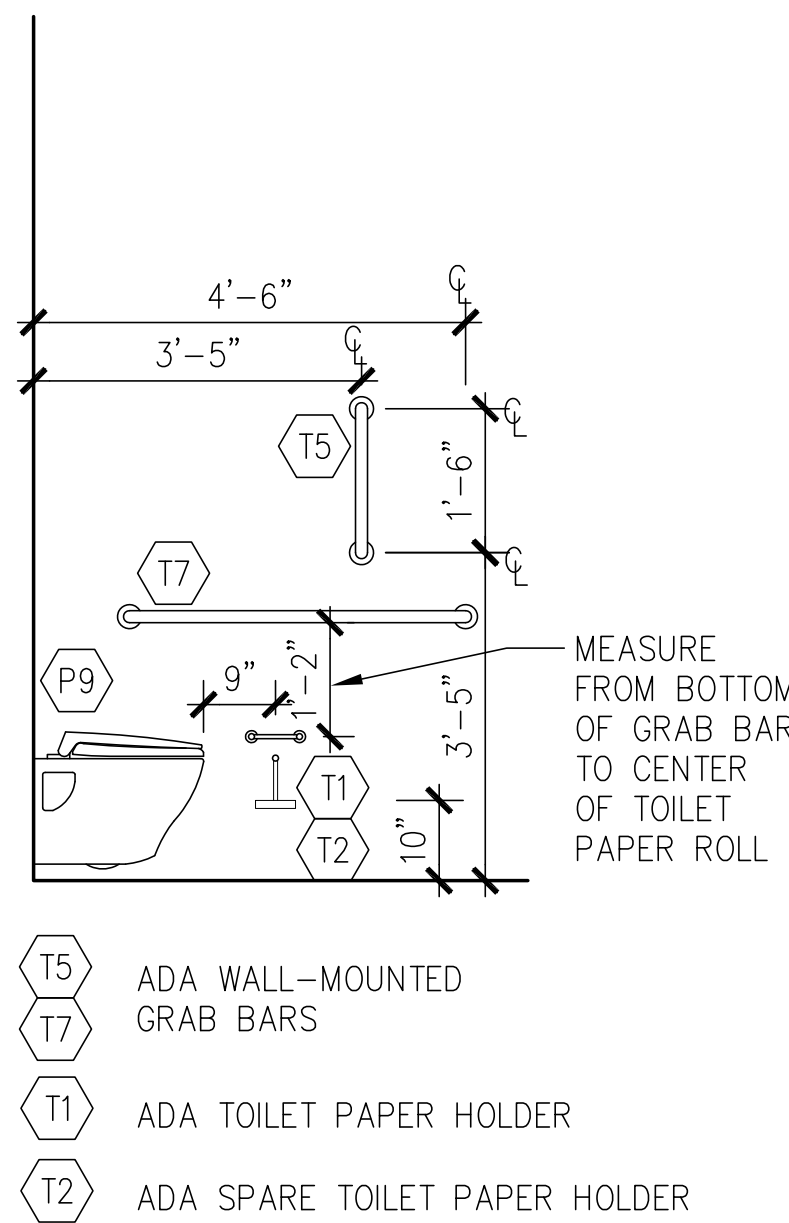
D | VANITY PLAN - SIDE MOUNTED CONDITION
1/2" = 1'-0"



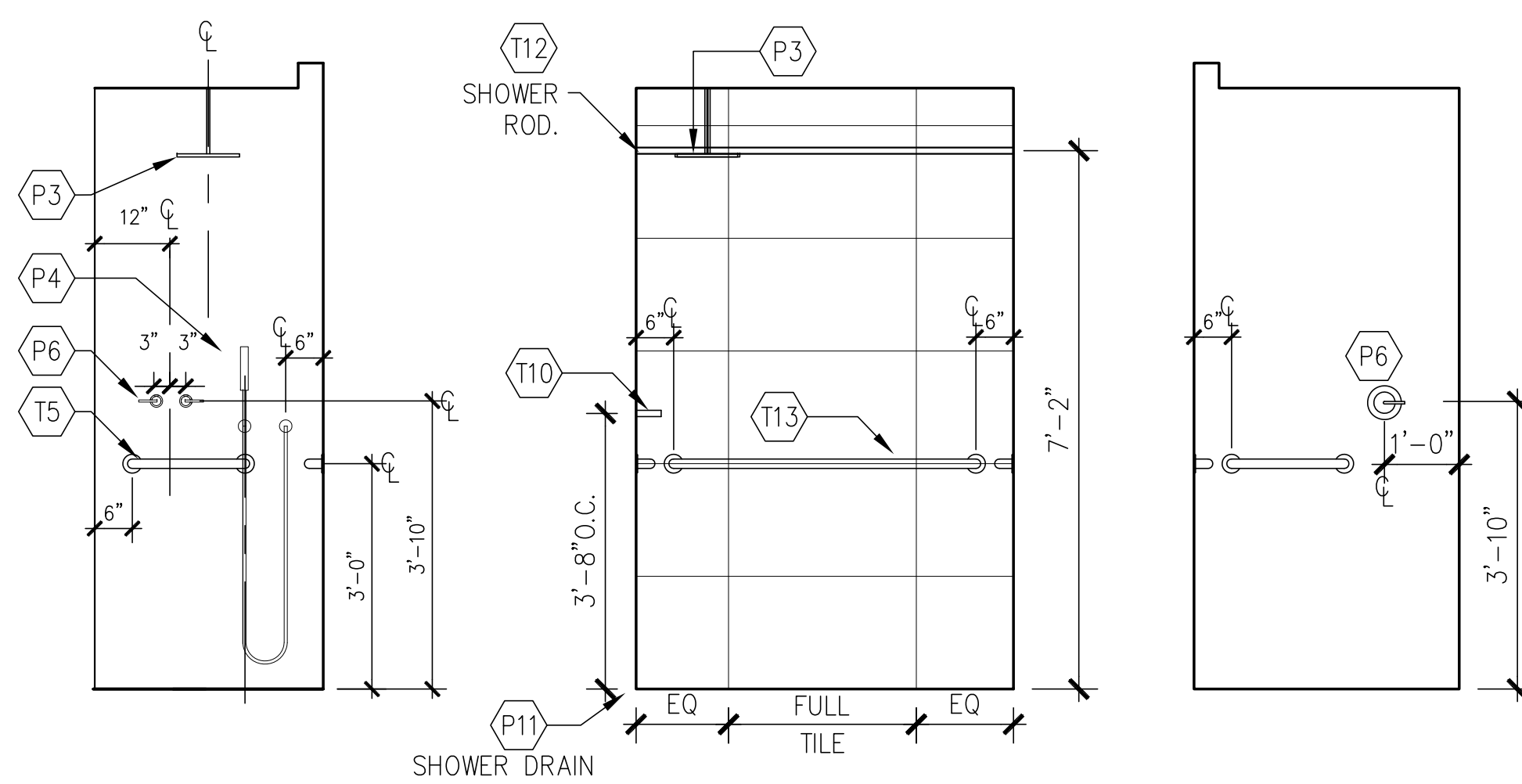
E | VANITY PLAN - DOUBLE SINK
1/2" = 1'-0"



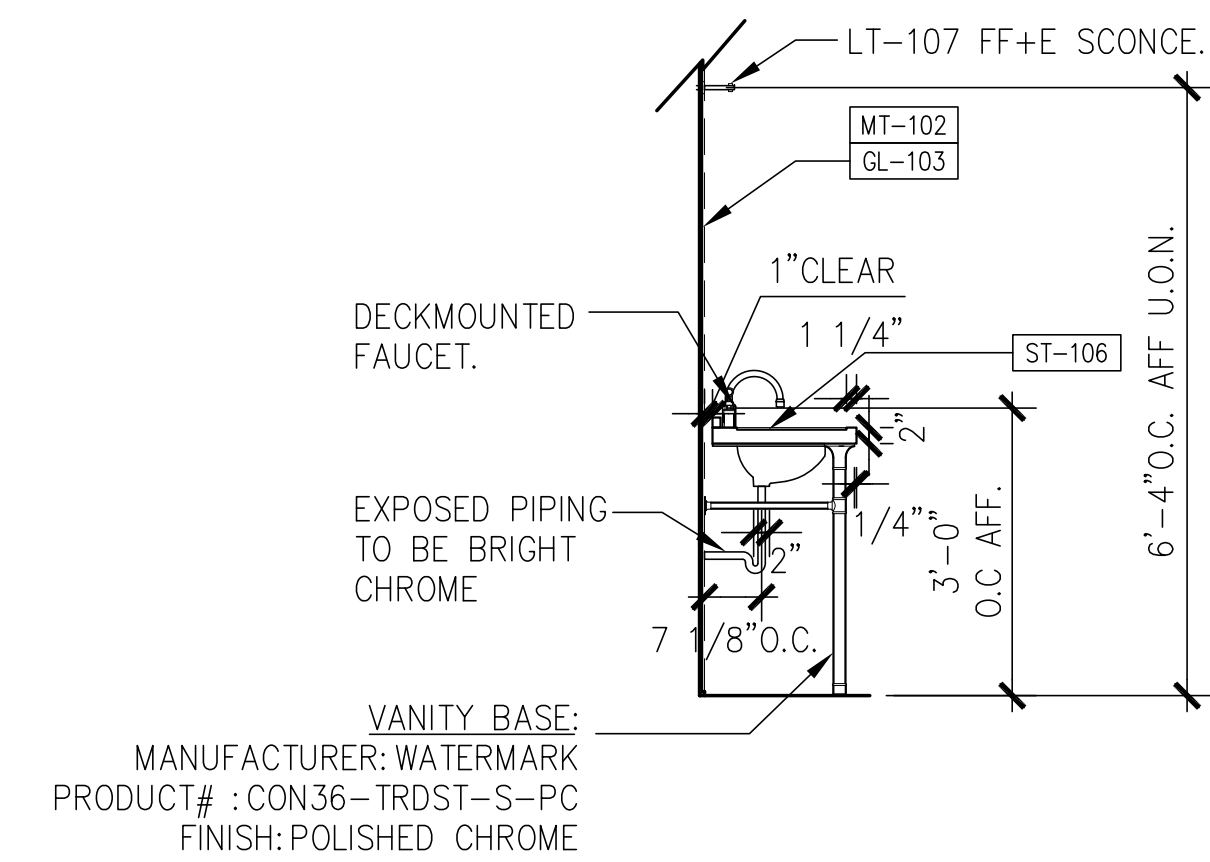
- P9 TOILET W/ IN-WALL CARRIER
- P9 ADA TOILET
- T6 ADA WALL-MOUNTED GRAB BARS



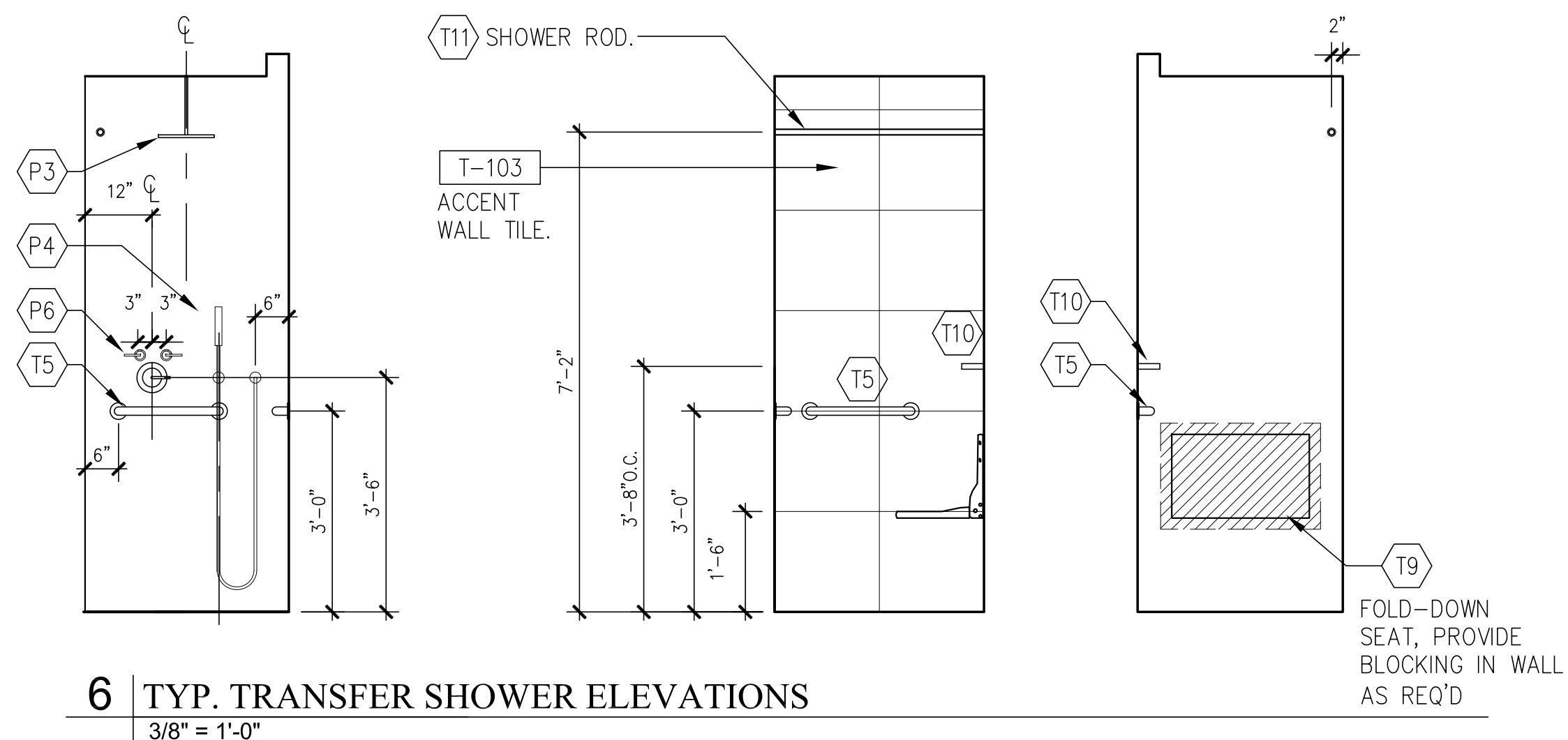
- T5 ADA WALL-MOUNTED GRAB BARS
- T1 ADA TOILET PAPER HOLDER
- T2 ADA SPARE TOILET PAPER HOLDER



5 | TYP. ROLL-IN SHOWER ELEVATIONS
3/8" = 1'-0"



C | TYP. VANITY - ADA @ POWDER RM
1/2" = 1'-0"



6 | TYP. TRANSFER SHOWER ELEVATIONS
3/8" = 1'-0"

Prepared For: **119 Development, LLC**
P.O. Box 7468
Portland, ME 04112

Consultant: **STONEHILL & TAYLOR ARCHITECTS AND PLANNERS**
31 W. 27th Street
Portland, Maine 04101
(212) 226-8898 Fax (212) 941-1874

Architect: **ARCHETYPE Architects**
48 Union Wharf
Portland, Maine 04101
(207) 772-6022 Fax (207) 772-4056

Project: **Press Hotel**
119 Exchange St.
Portland, ME 04101

Revisions:	Date:	Scale:
1	03-07-01	1/2" = 1'-0"
2	03-09-09	1/2" = 1'-0"
3	13-10-14	1/2" = 1'-0"

06 SEPT, 2013
Date: 06 SEPT, 2013
Scale: 1/2" = 1'-0"
Interior
GUESTROOM DETAILS

Revisions:
1 3-07-01 30% Marriott Submission
2 3-09-09 60% Marriott Sub. & Pric
3 13-10-14 Issue for Bid & Marriott Rev

ID-8.05