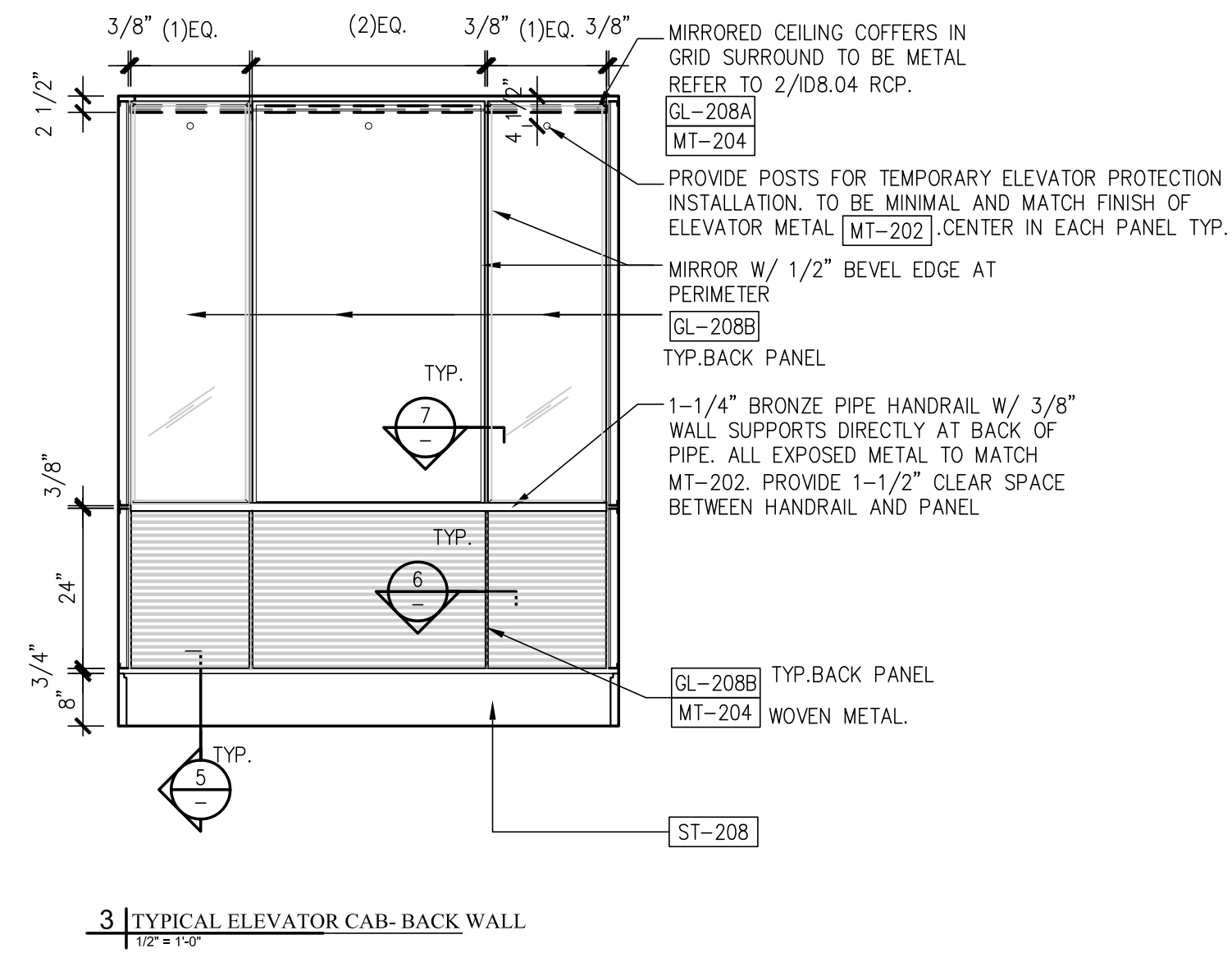
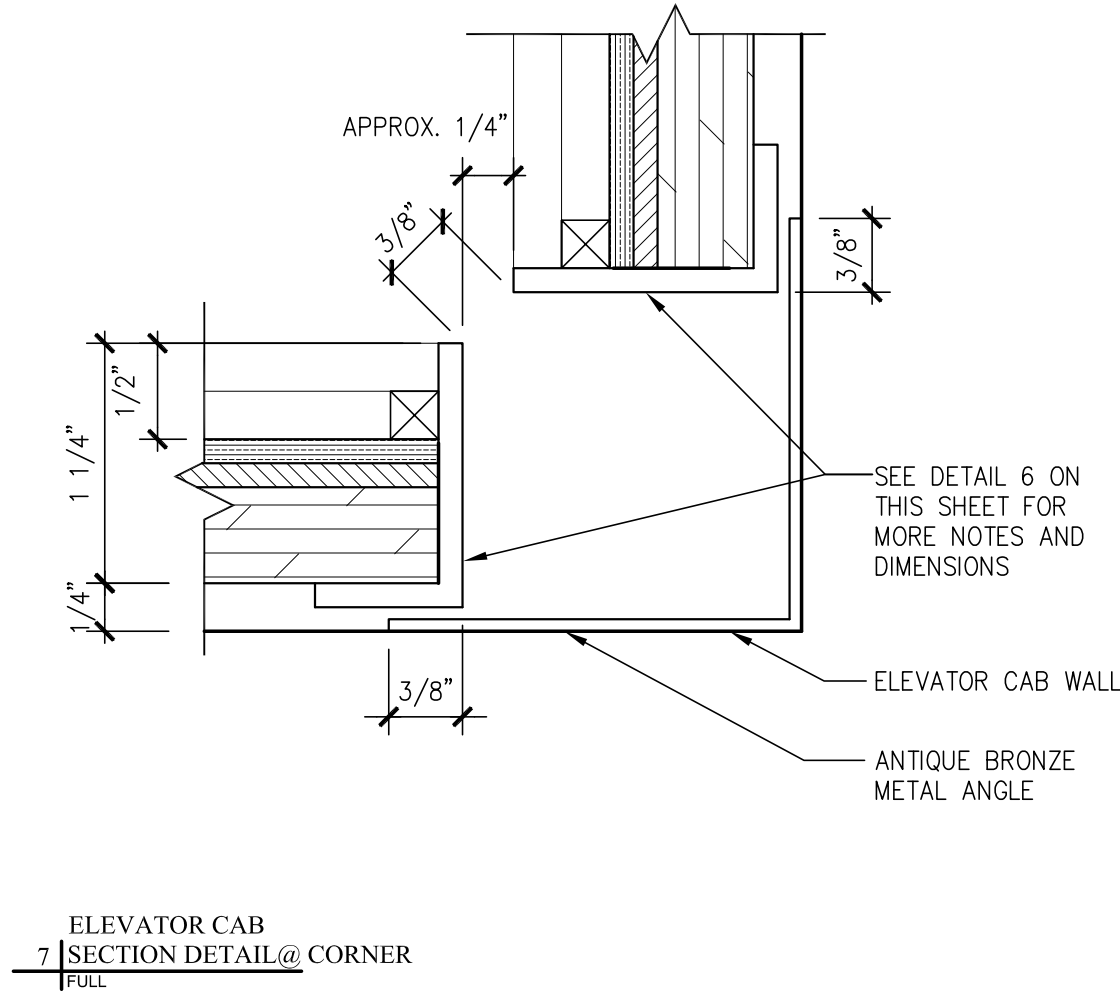
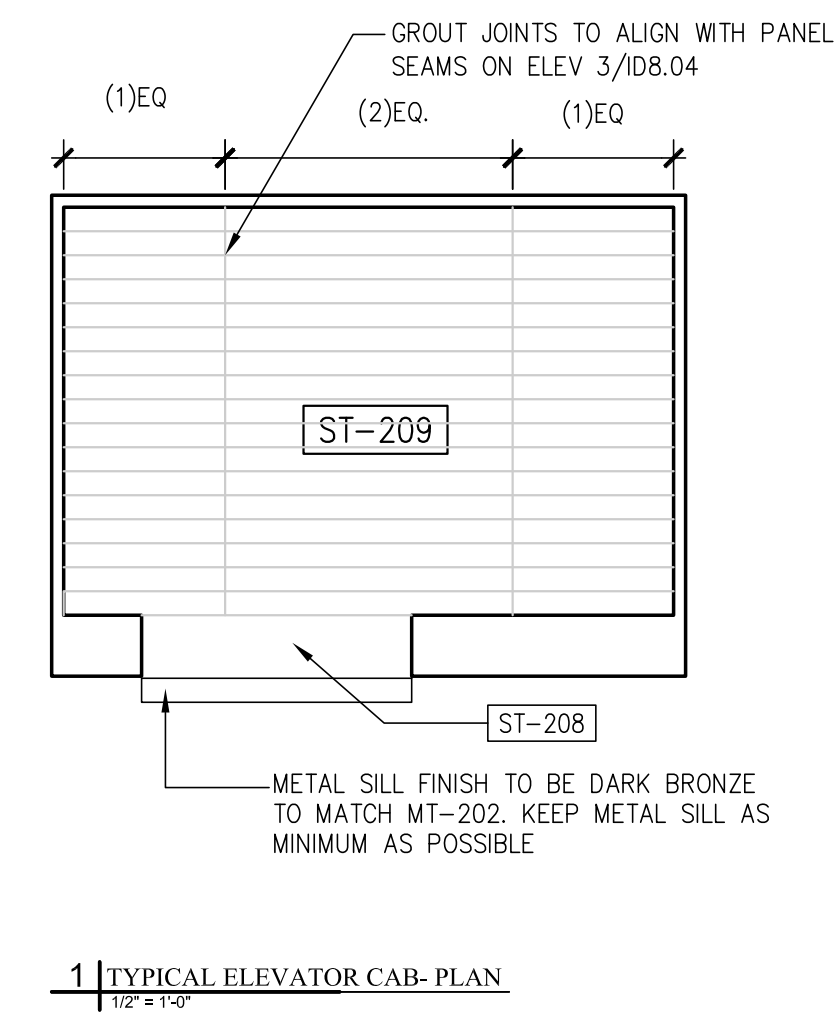
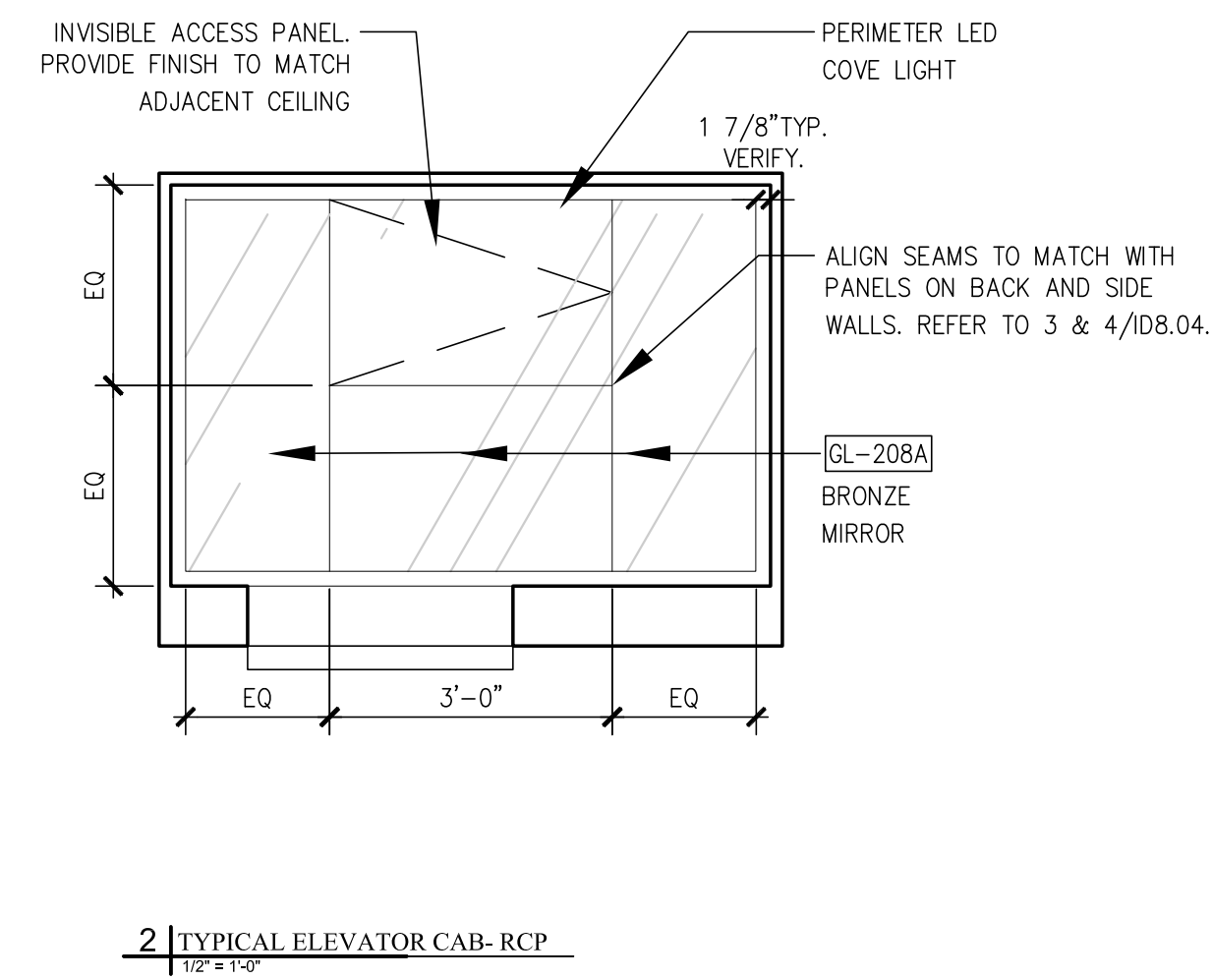


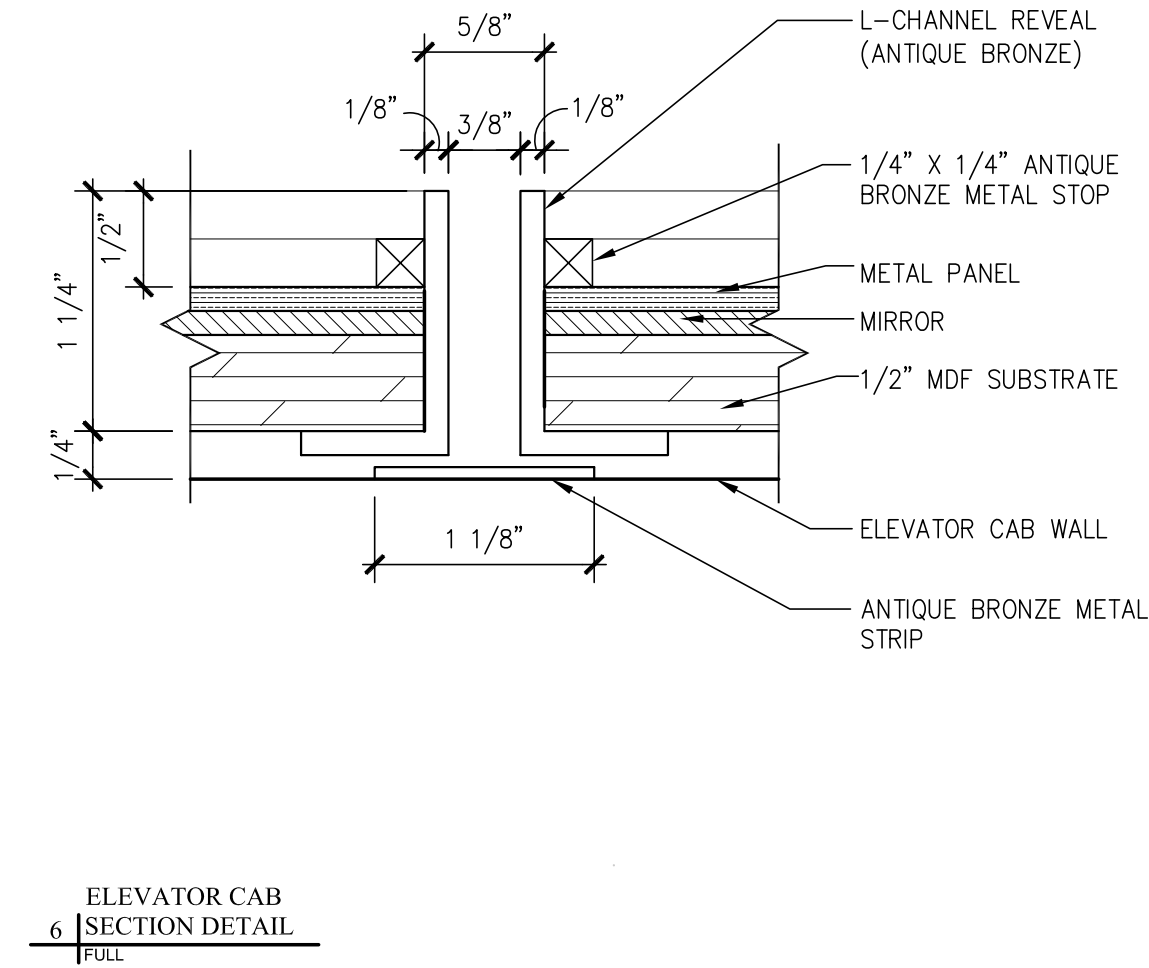
4 TYPICAL ELEVATOR CAB-SIDE WALL
1/2" = 1'-0"



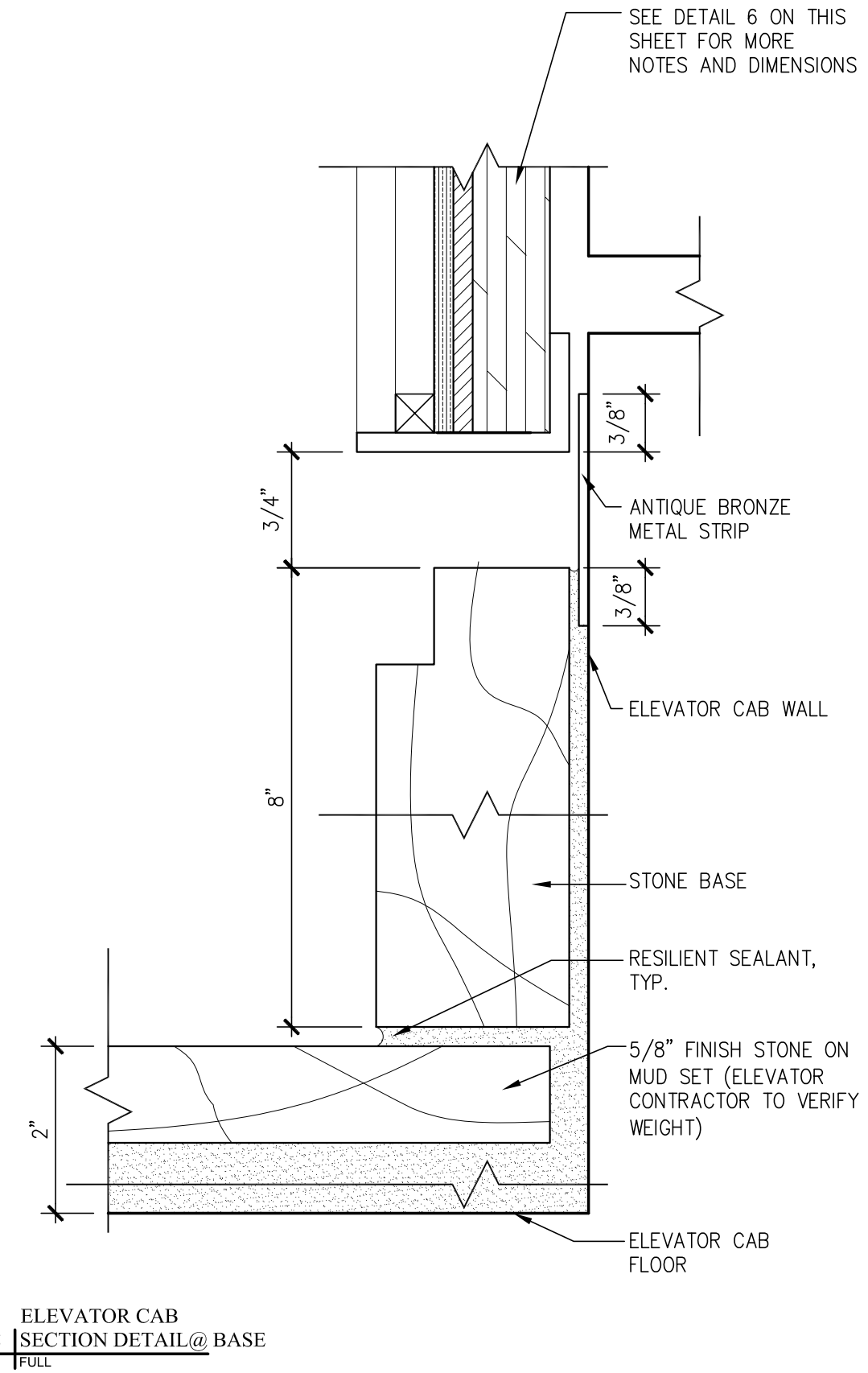
3 TYPICAL ELEVATOR CAB-BACK WALL
1/2" = 1'-0"



ELEVATOR CAB SECTION DETAIL @ CORNER
1/2" = 1'-0"



ELEVATOR CAB SECTION DETAIL
1/2" = 1'-0"



Prepared For:
119 Development, LLC
P.O. Box 7468
Portland, ME 04112

Consultant:
STONEHILL & TAYLOR ARCHITECTS AND PLANNERS
31 W. 27th Street New York, NY 10001
(212) 226-8898 Fax (212) 941-1874

Architect:
ARCHETYPE architects
48 Union Wharf Portland, Maine 04101
(207) 772-6022 Fax (207) 772-4056

Project:
Press Hotel
119 Exchange St.
Portland, ME 04101

Revisions:	30% Marriott Submission
1 13-07-01	60% Marriott Sub. & Pric.
2 13-09-09	Issue for Bid & Marriott Rev.
3 13-10-14	

Date: 06 SEPT, 513
Scale: AS NOTED
INTERIOR DETAILS- ELEVATOR CAB

ID-8.04