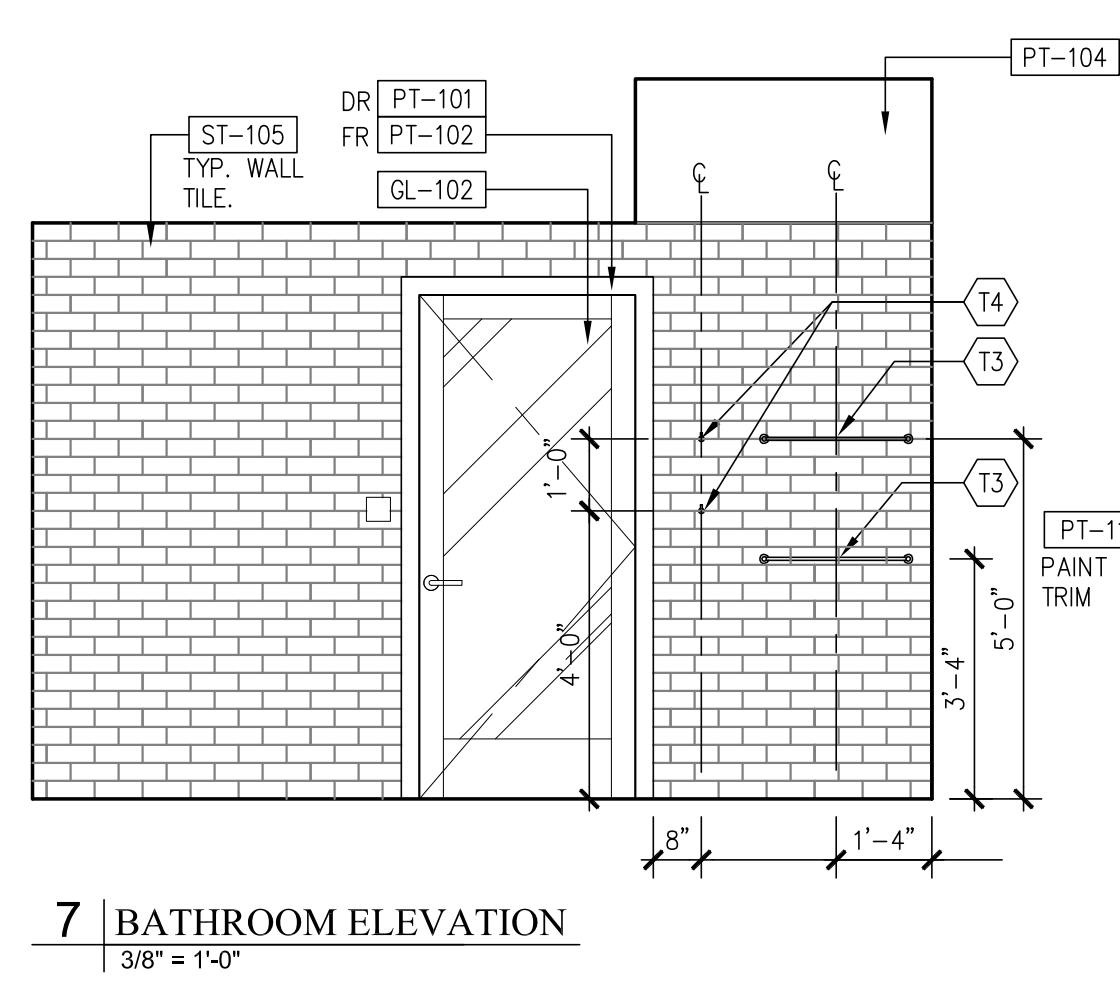
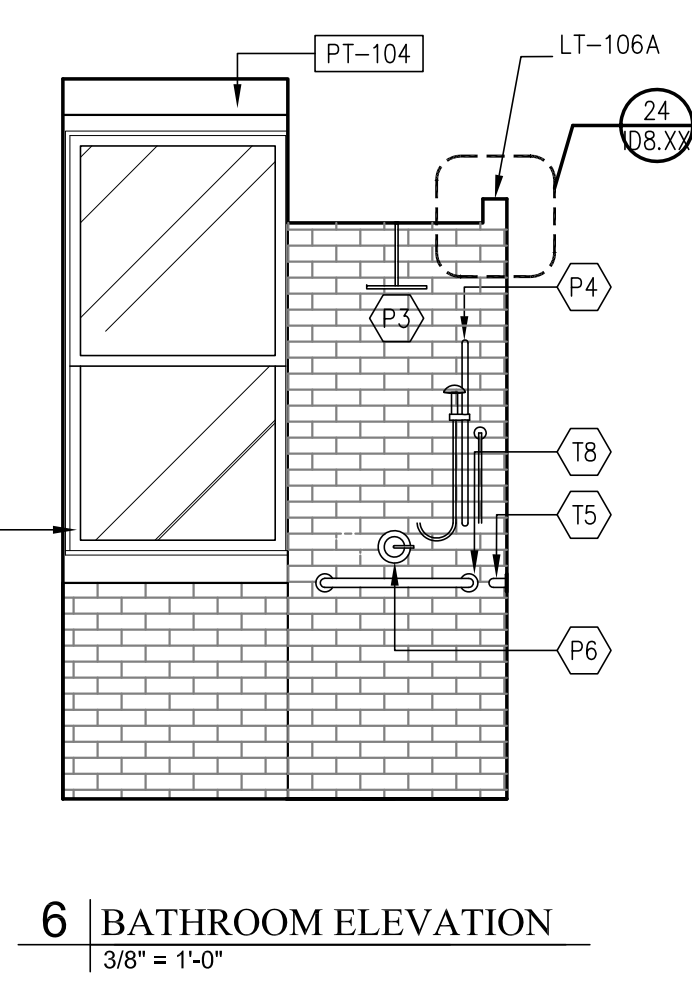


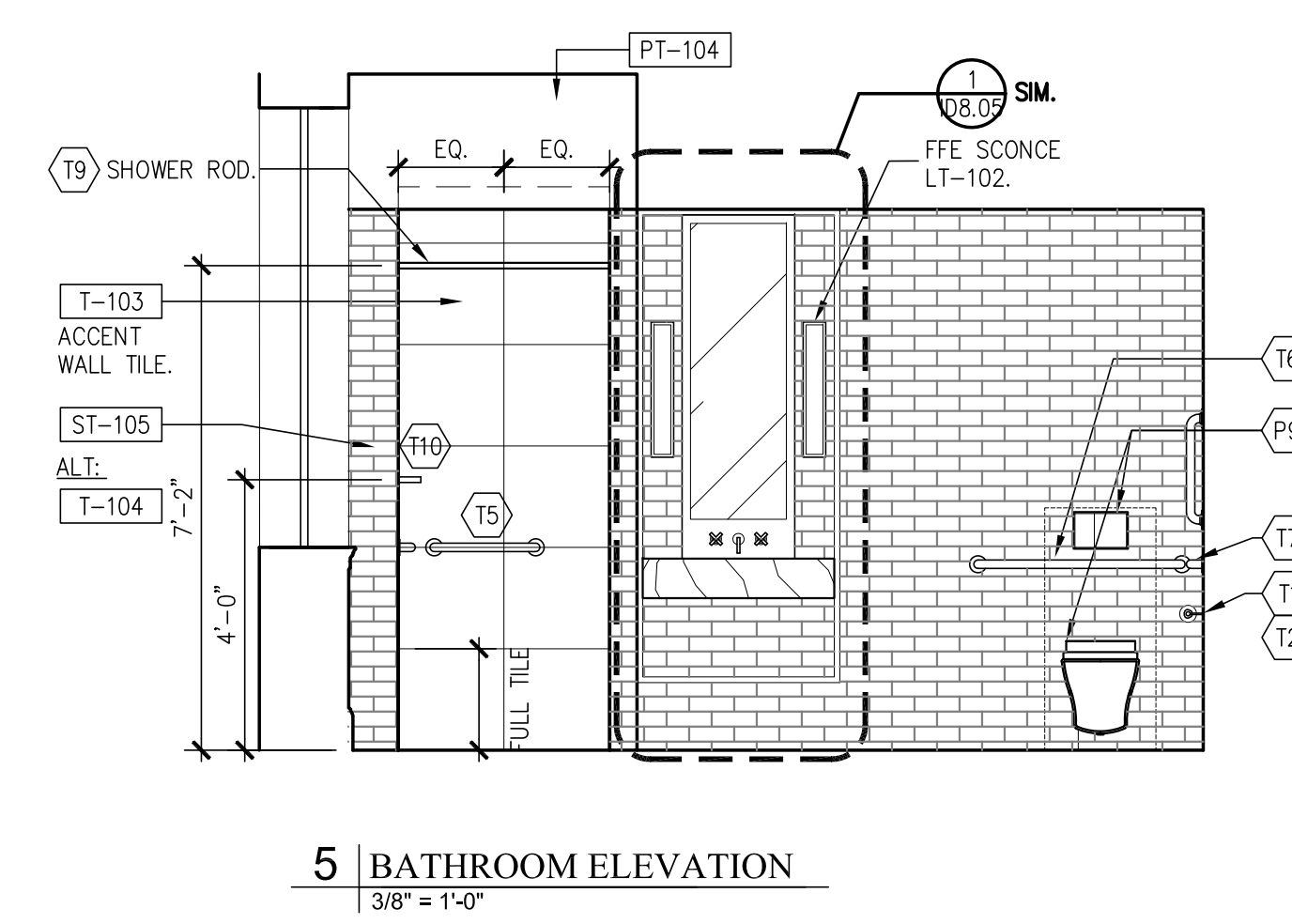
8 BATHROOM ELEVATION  
3/8" = 1'-0"



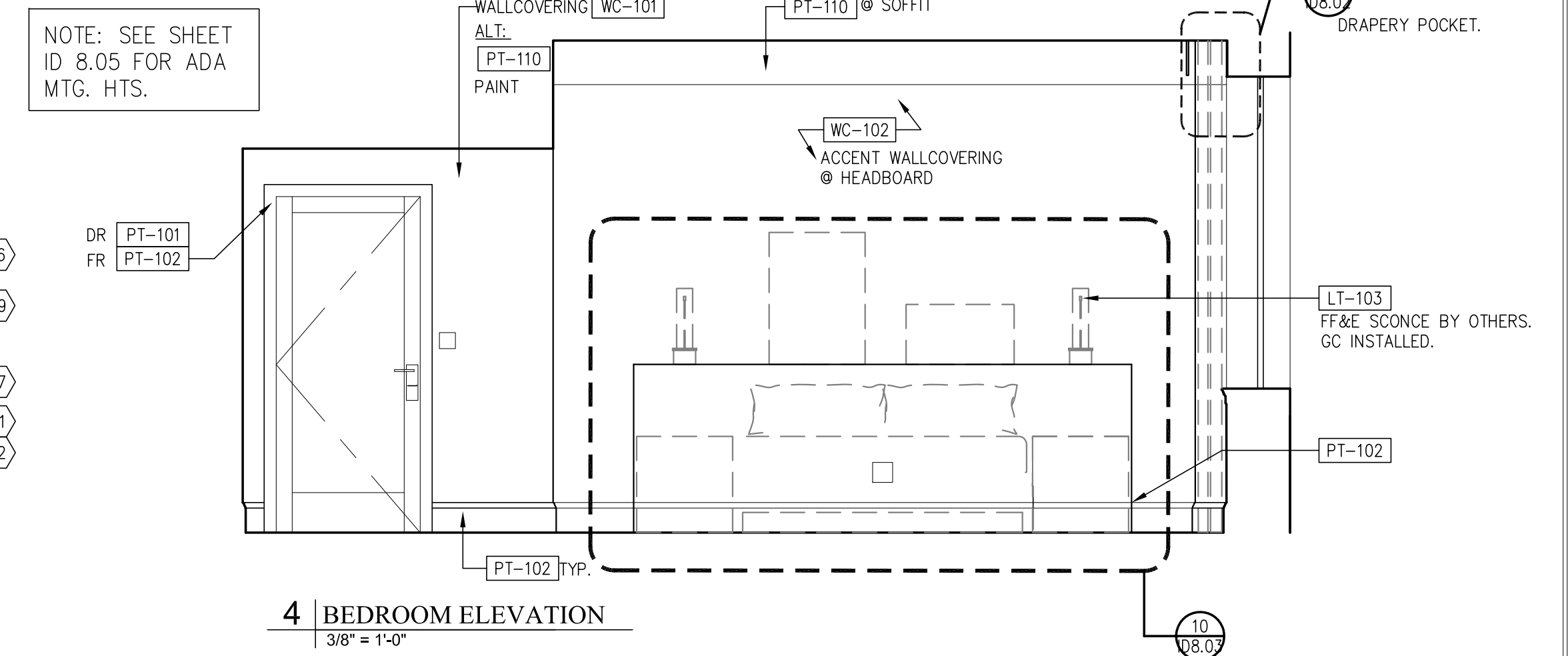
7 BATHROOM ELEVATION  
3/8" = 1'-0"



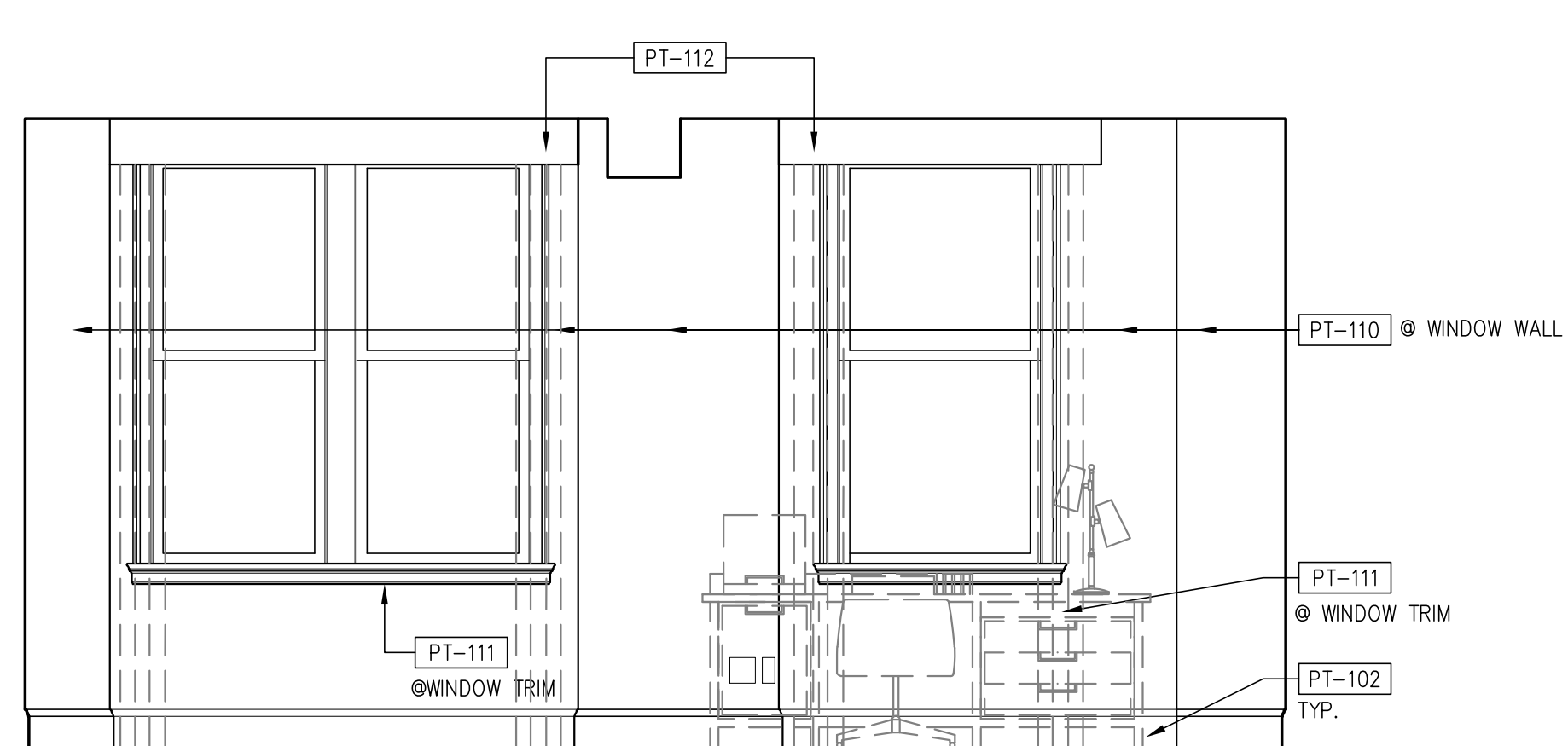
6 BATHROOM ELEVATION  
3/8" = 1'-0"



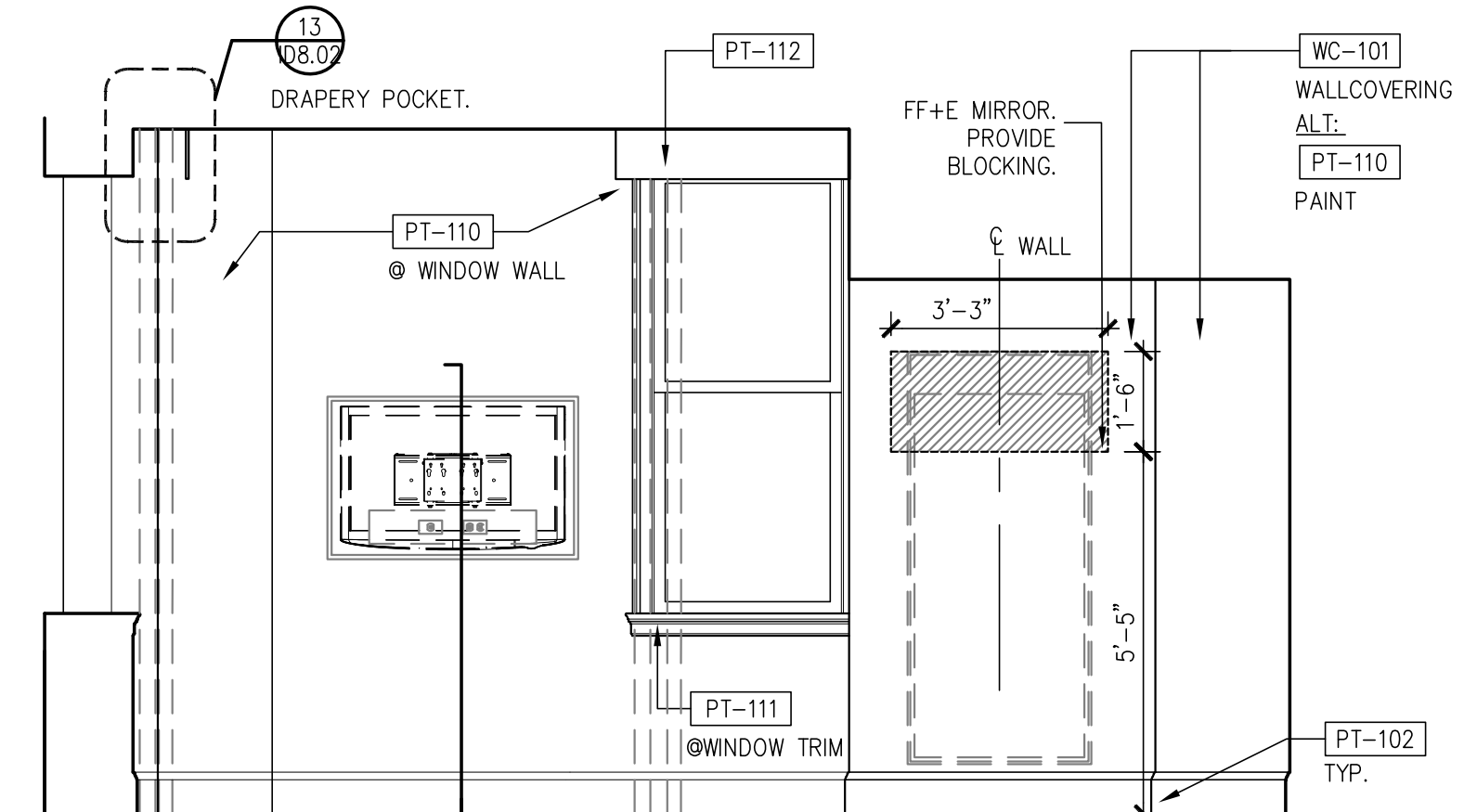
5 BATHROOM ELEVATION  
3/8" = 1'-0"



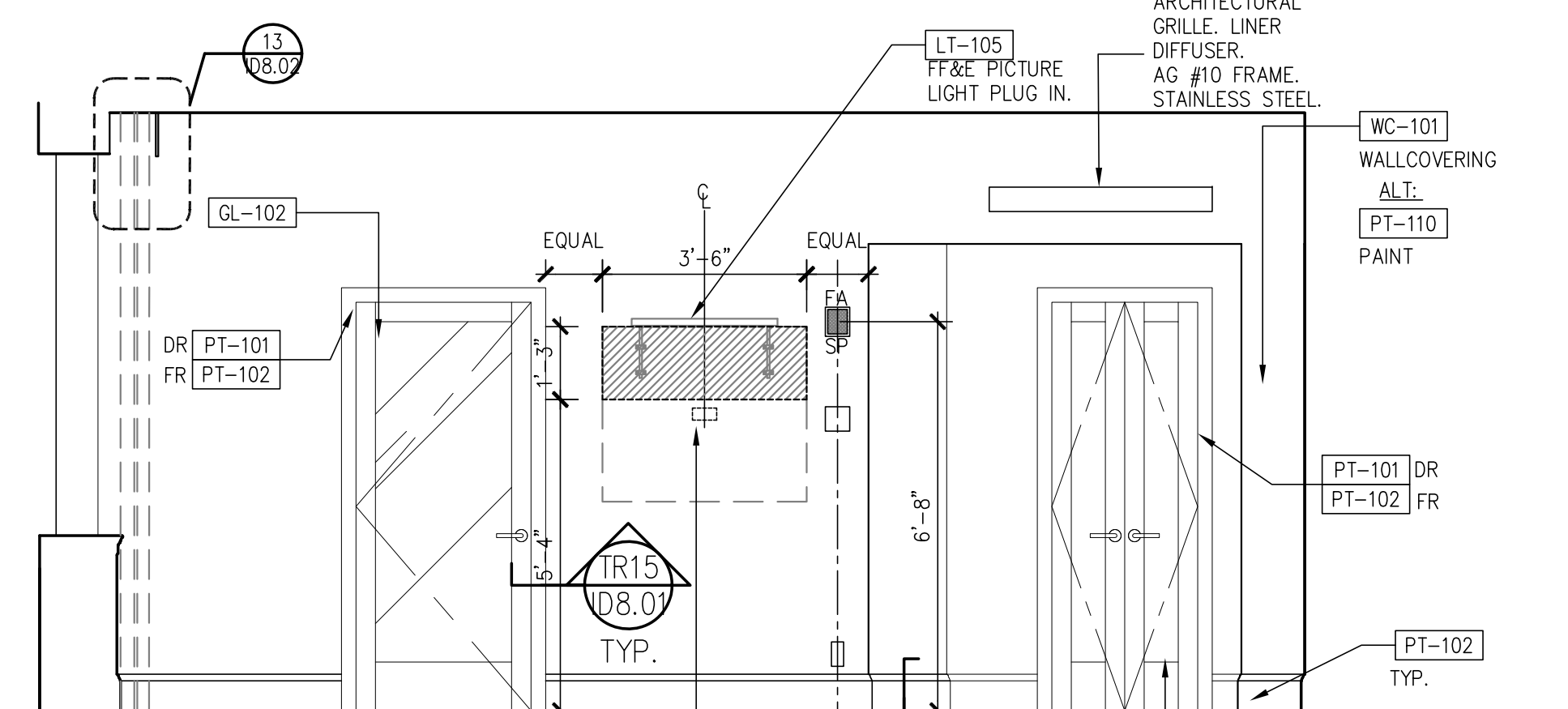
4 BEDROOM ELEVATION  
3/8" = 1'-0"



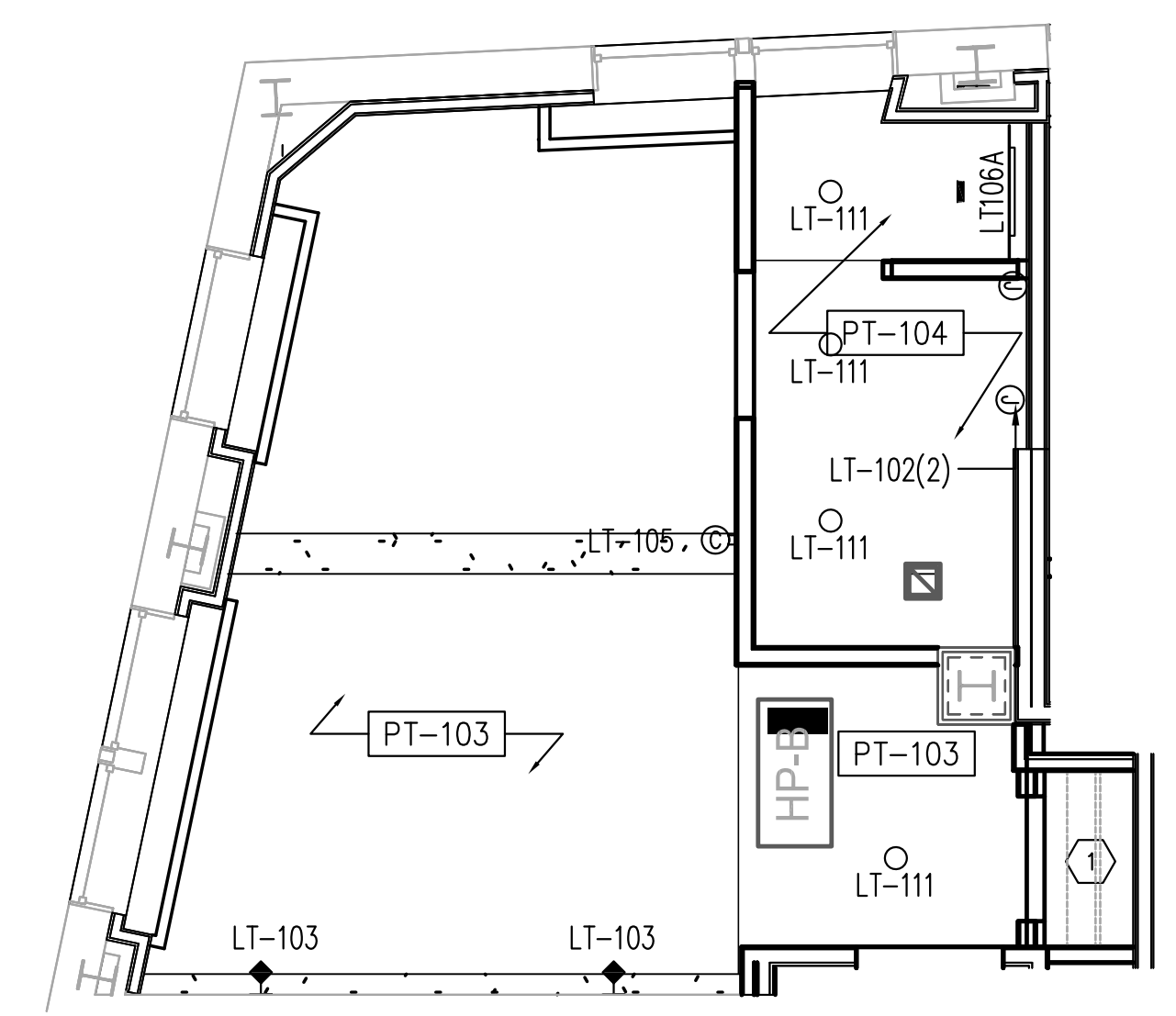
3 BEDROOM ELEVATION  
3/8" = 1'-0"



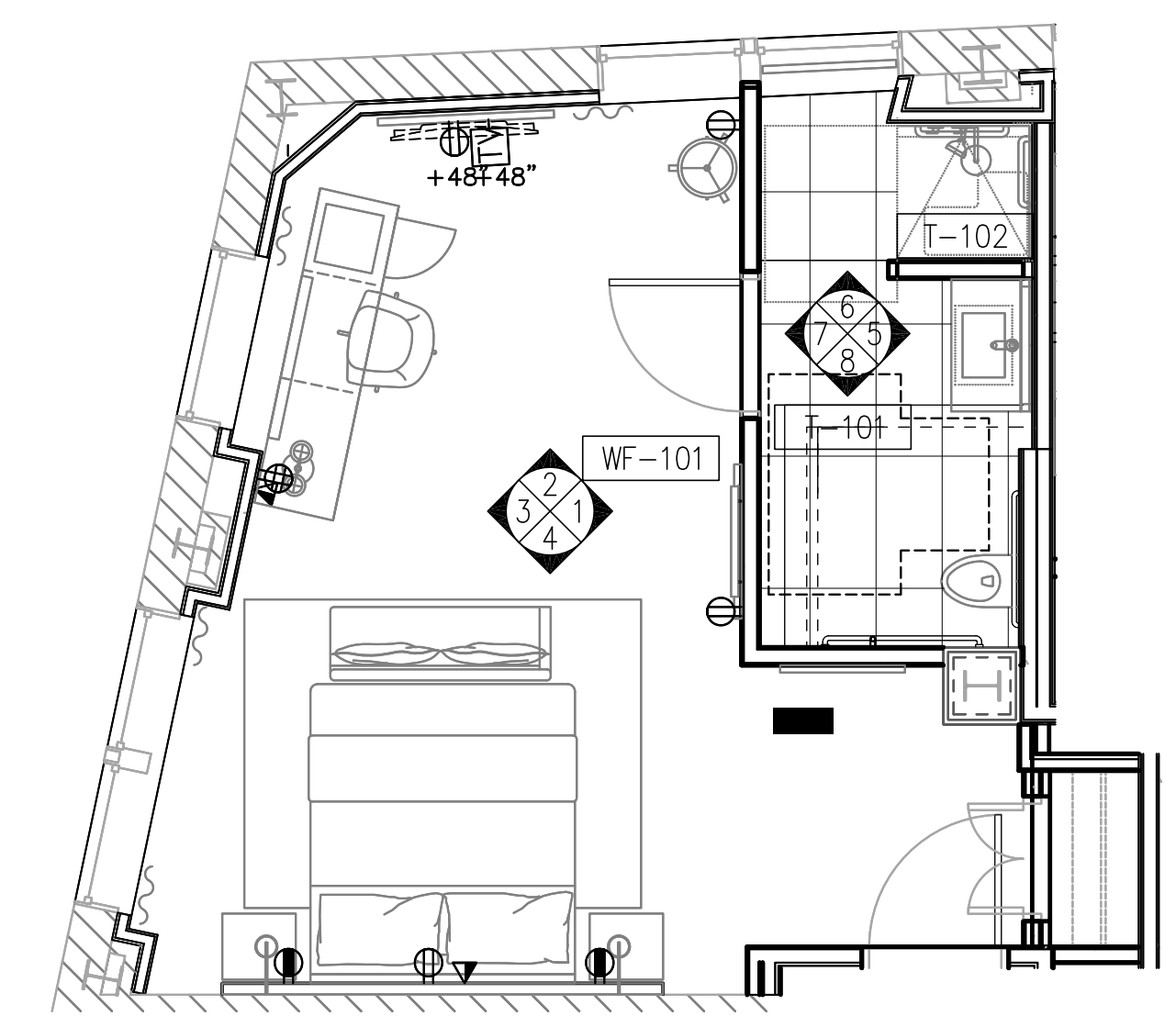
2 BEDROOM ELEVATION  
3/8" = 1'-0"



1 BEDROOM ELEVATION  
3/8" = 1'-0"



21 ROOM TYPE M-ADA REFLECTED CEILING PLAN  
1/4" = 1'-0"



20 ROOM TYPE M-ADA FLOOR PLAN  
1/4" = 1'-0"

Prepared For: **119 Development, LLC**  
P.O. Box 7468  
Portland, ME 04112

Consultant: **STONEHILL & TAYLOR ARCHITECTS AND PLANNERS**  
31 W. 27th Street New York, NY 10001  
(212) 226-8898 Fax (212) 941-1874

Architect: **ARCHETYPE Architects**  
48 Union Wharf Portland, Maine 04101  
(207) 772-6022 Fax (207) 772-4056

Project: **Press Hotel**  
119 Exchange St.  
Portland, ME 04101

Revisions:	Date:	Description
1	07-01	30% Marriott Submission
2	09-09	60% Marriott Sub. & Pric
3	10-14	Issue for Bid & Marriott Rev

Date: **06 SEPT, 2013**  
Scale: **RM TYPE M-ADA PLANS & ELEVATIONS**

**ID-7.25**