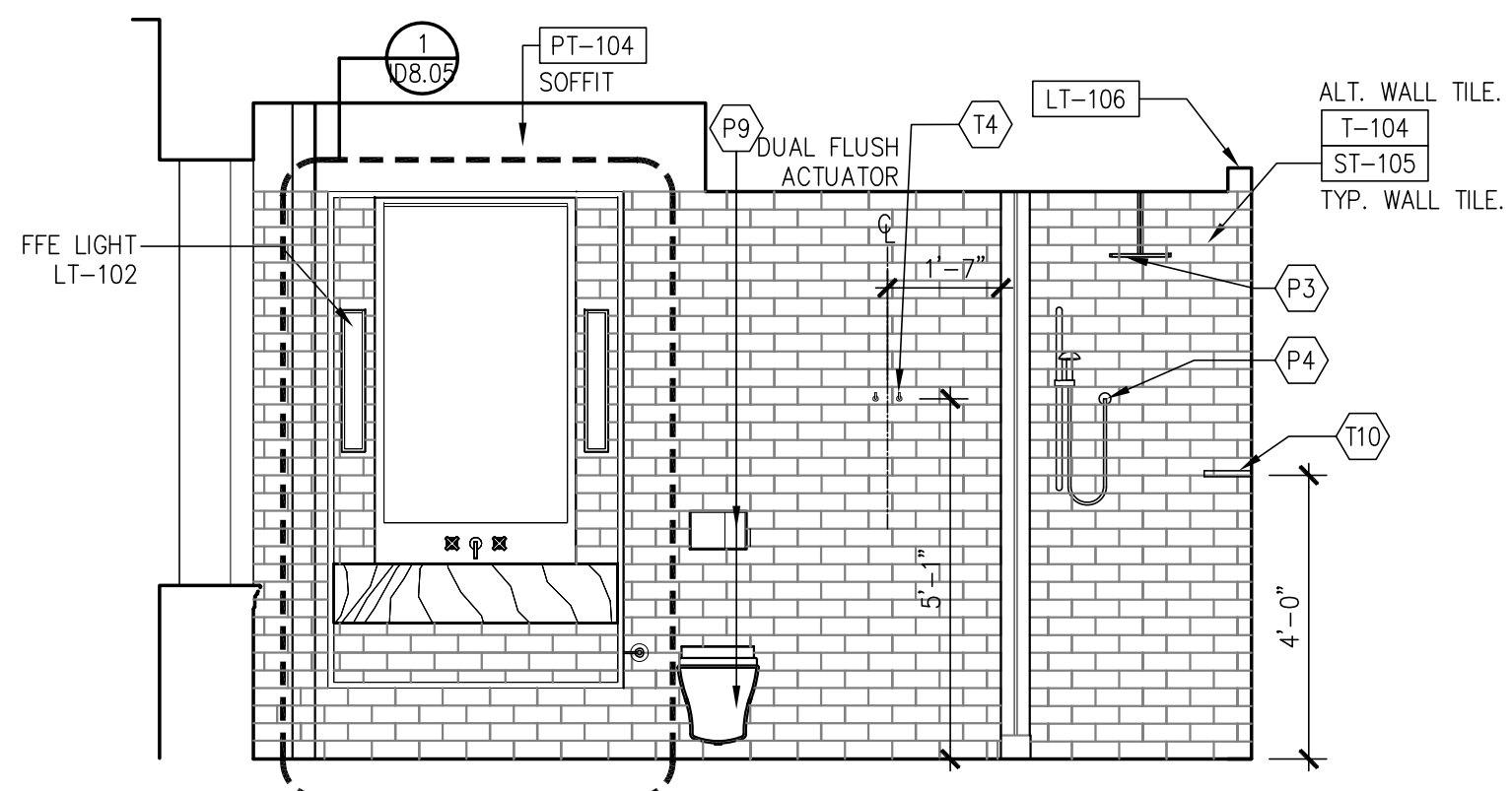
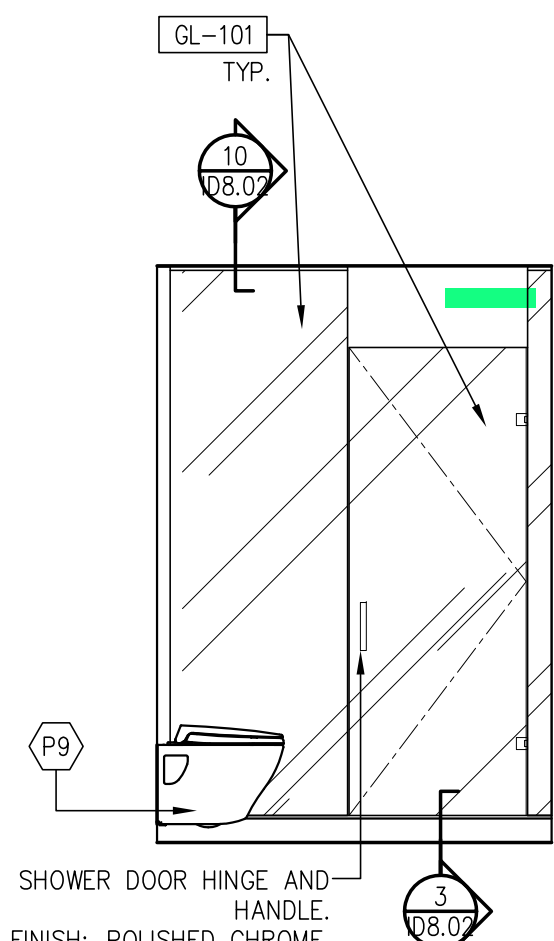


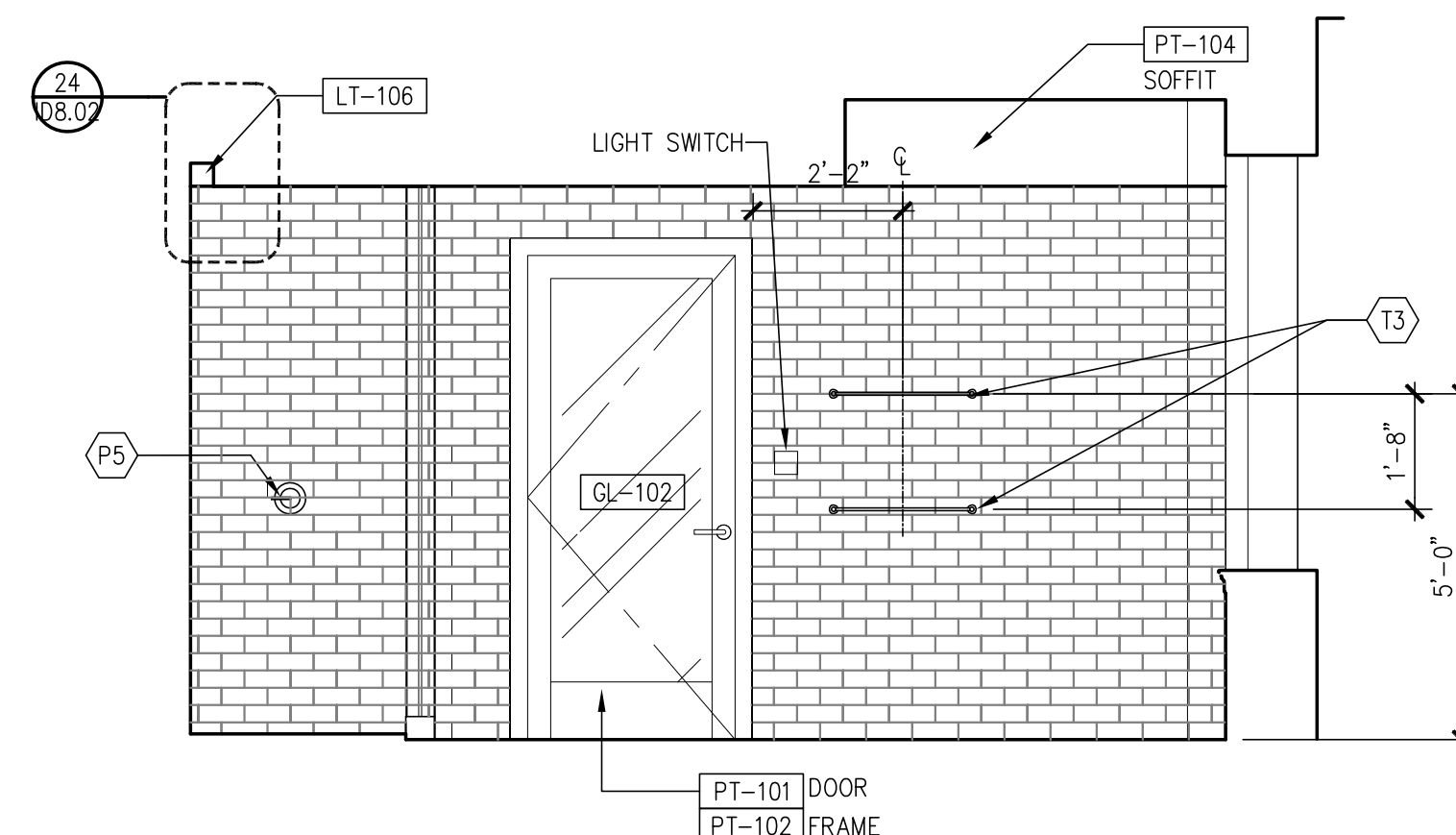
9 BATHROOM ELEVATION
3/8" = 1'-0"



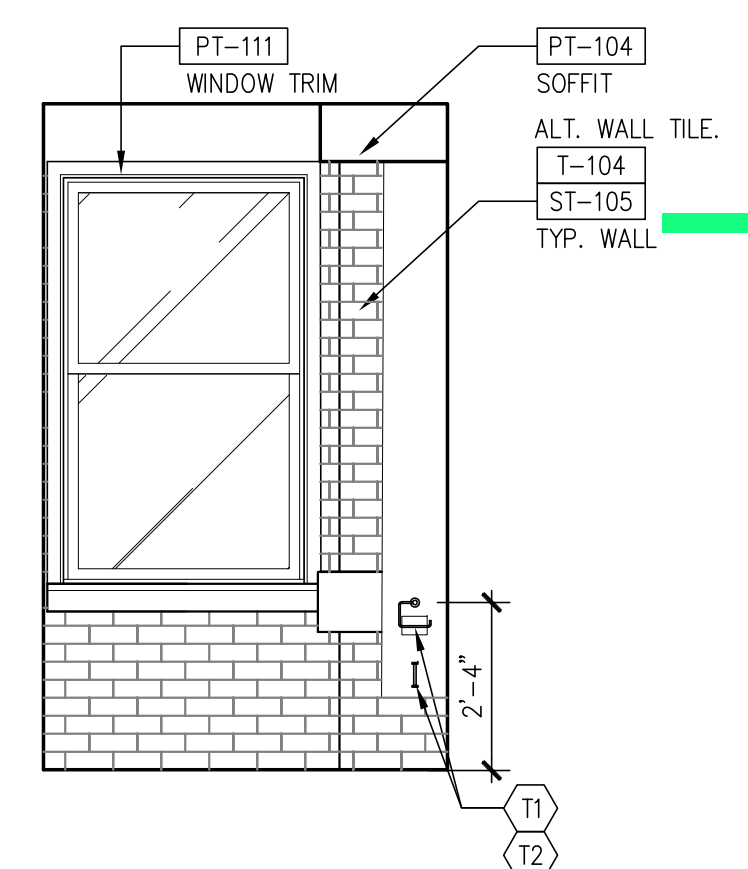
8 BEDROOM ELEVATION
3/8" = 1'-0"



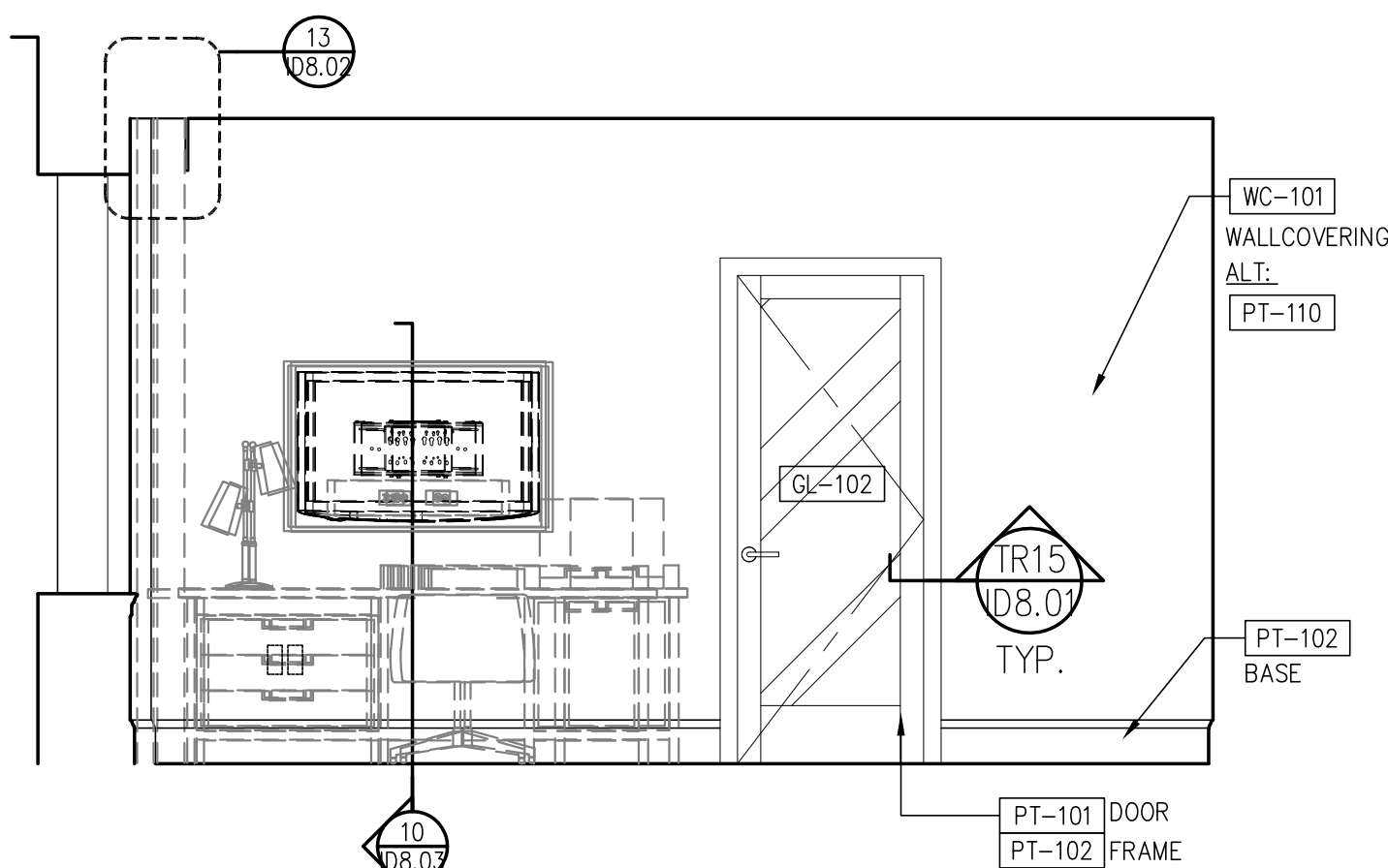
7 BATHROOM ELEVATION
3/8" = 1'-0"



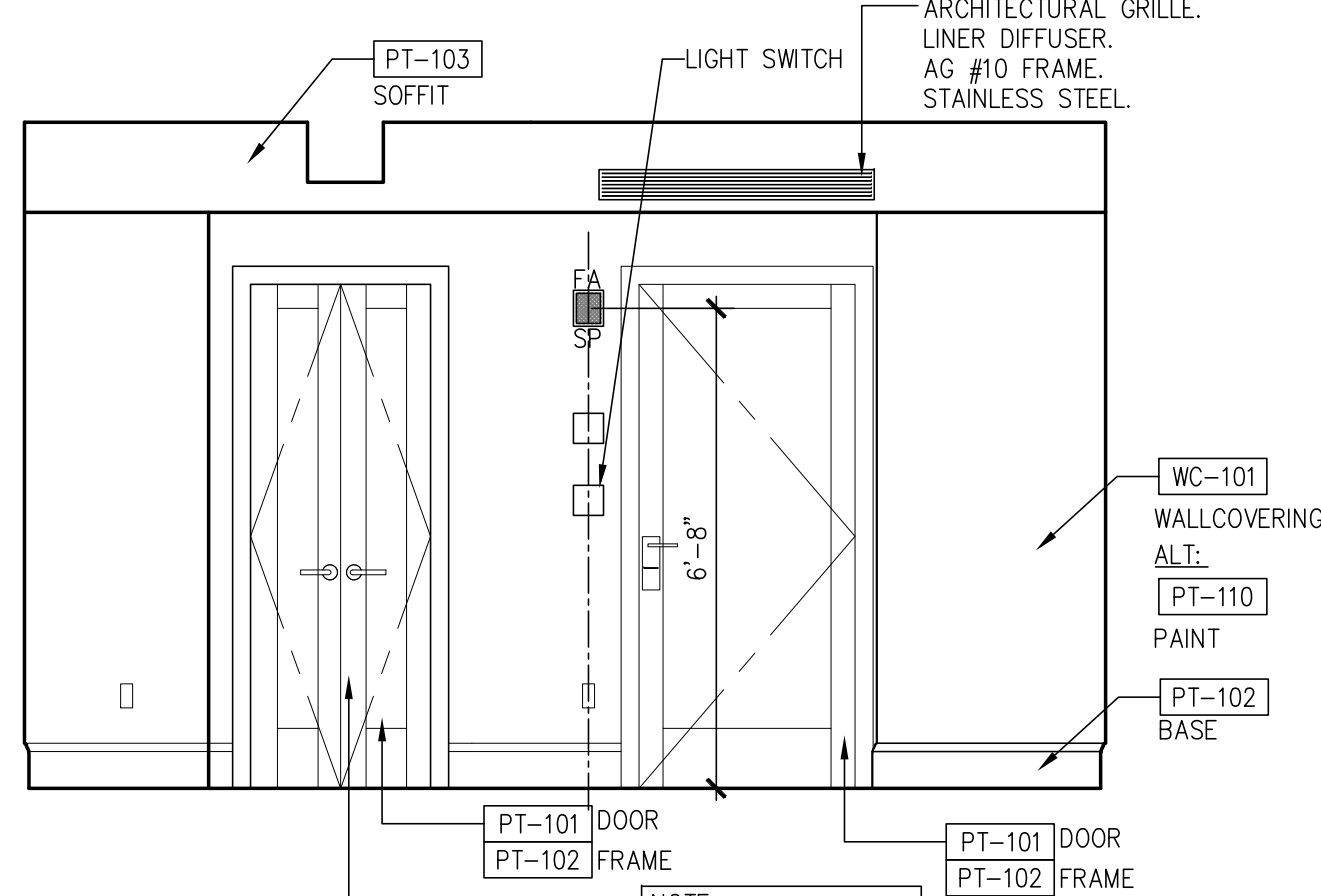
6 BATHROOM ELEVATION
3/8" = 1'-0"



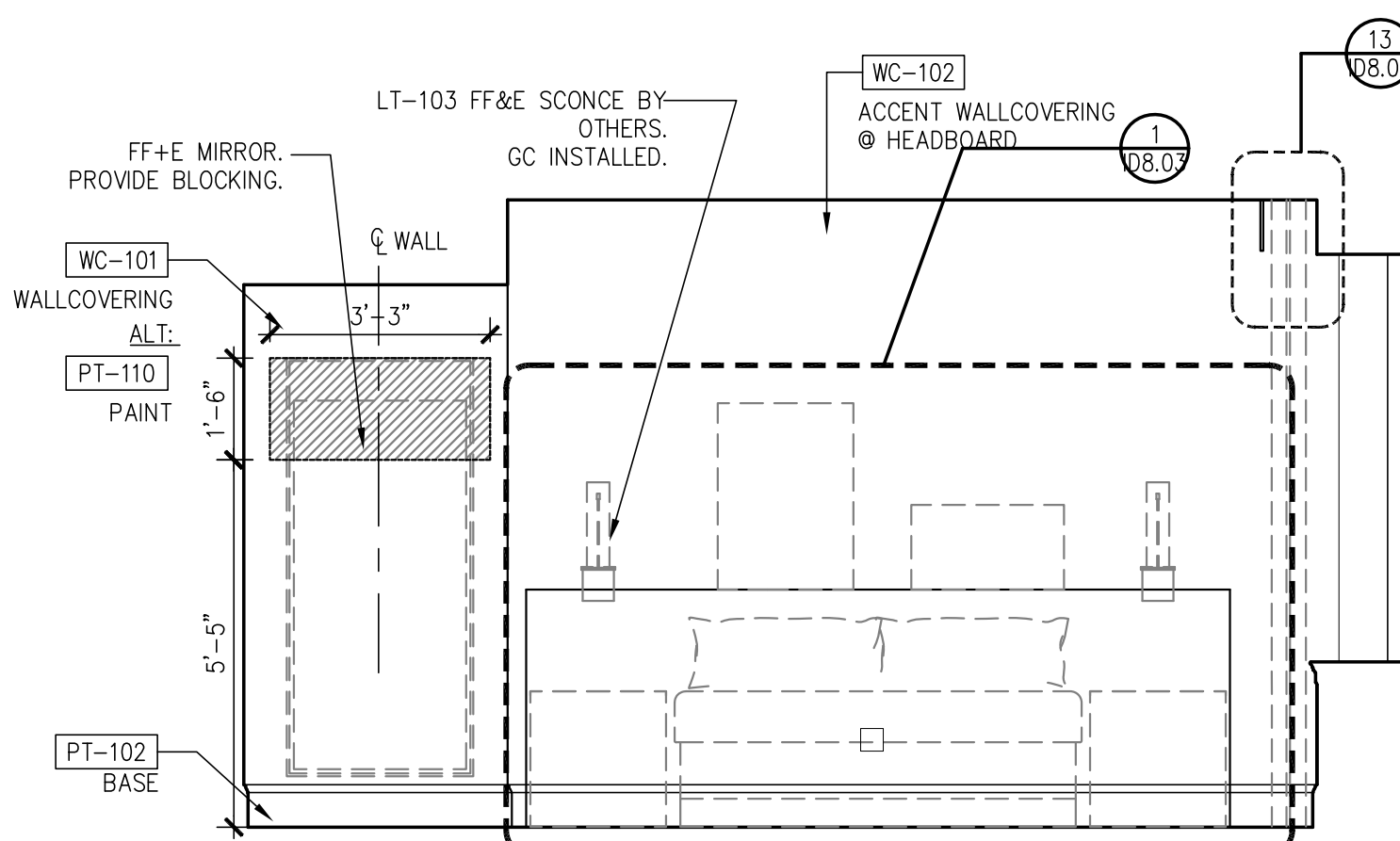
5 BATHROOM ELEVATION
3/8" = 1'-0"



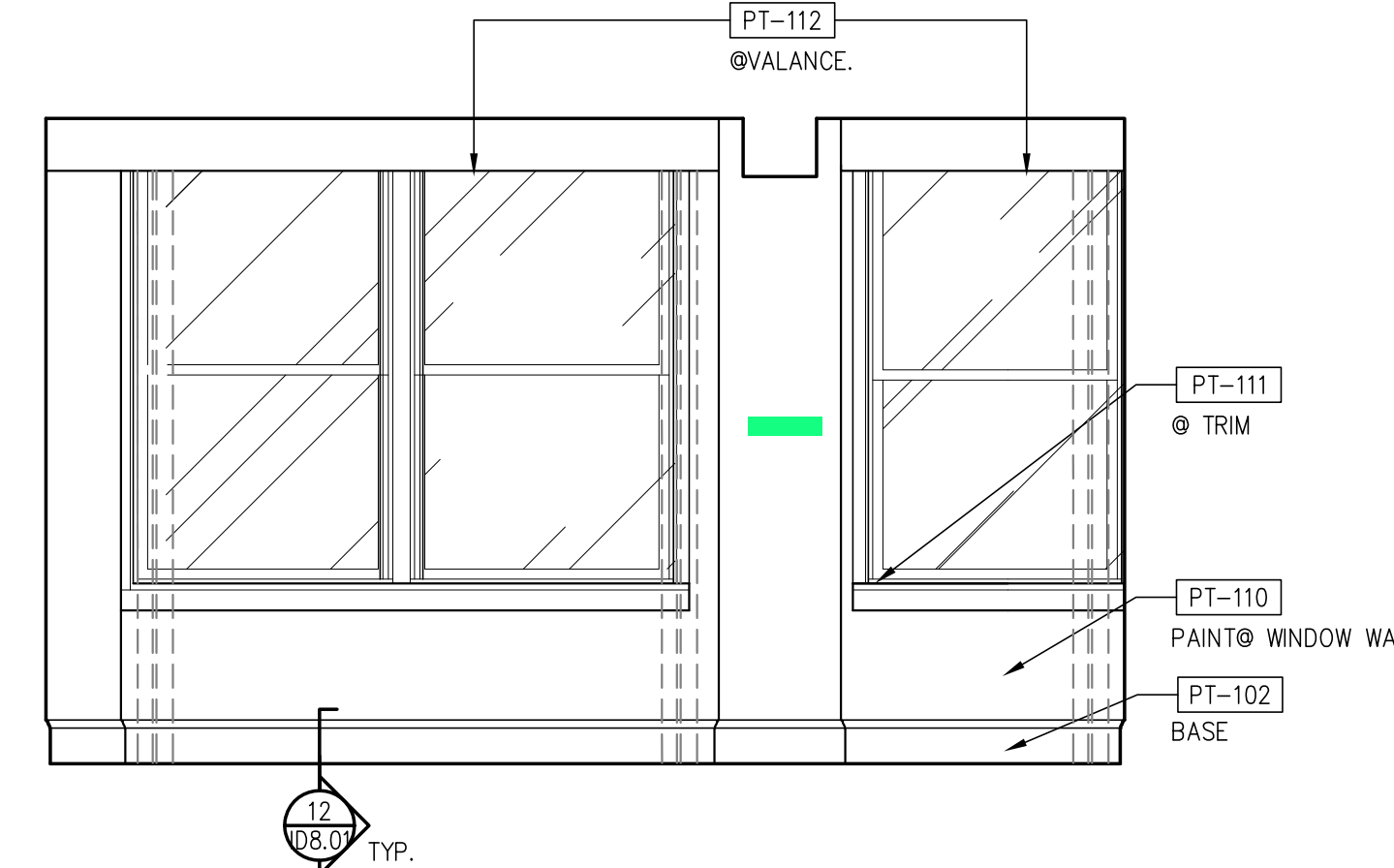
4 BEDROOM ELEVATION
3/8" = 1'-0"



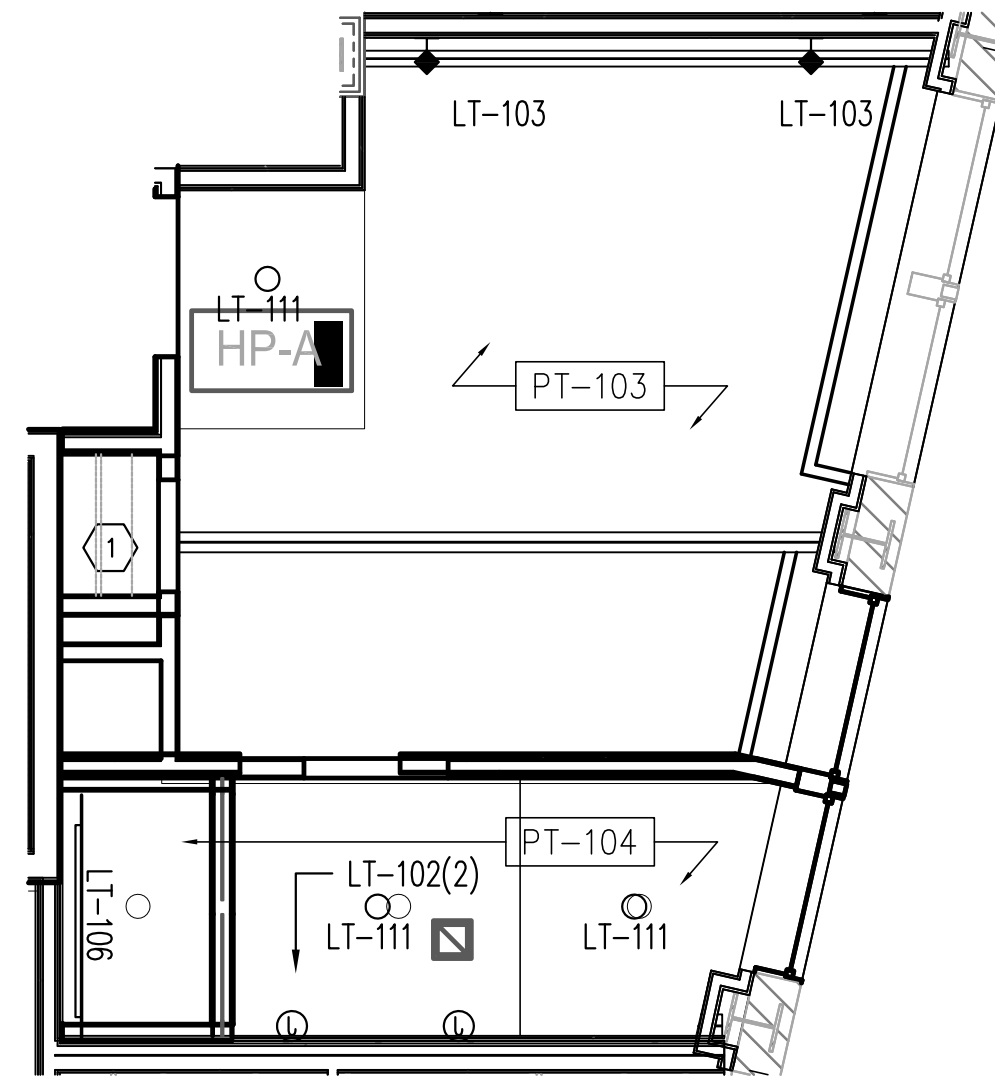
3 BEDROOM ELEVATION
3/8" = 1'-0"



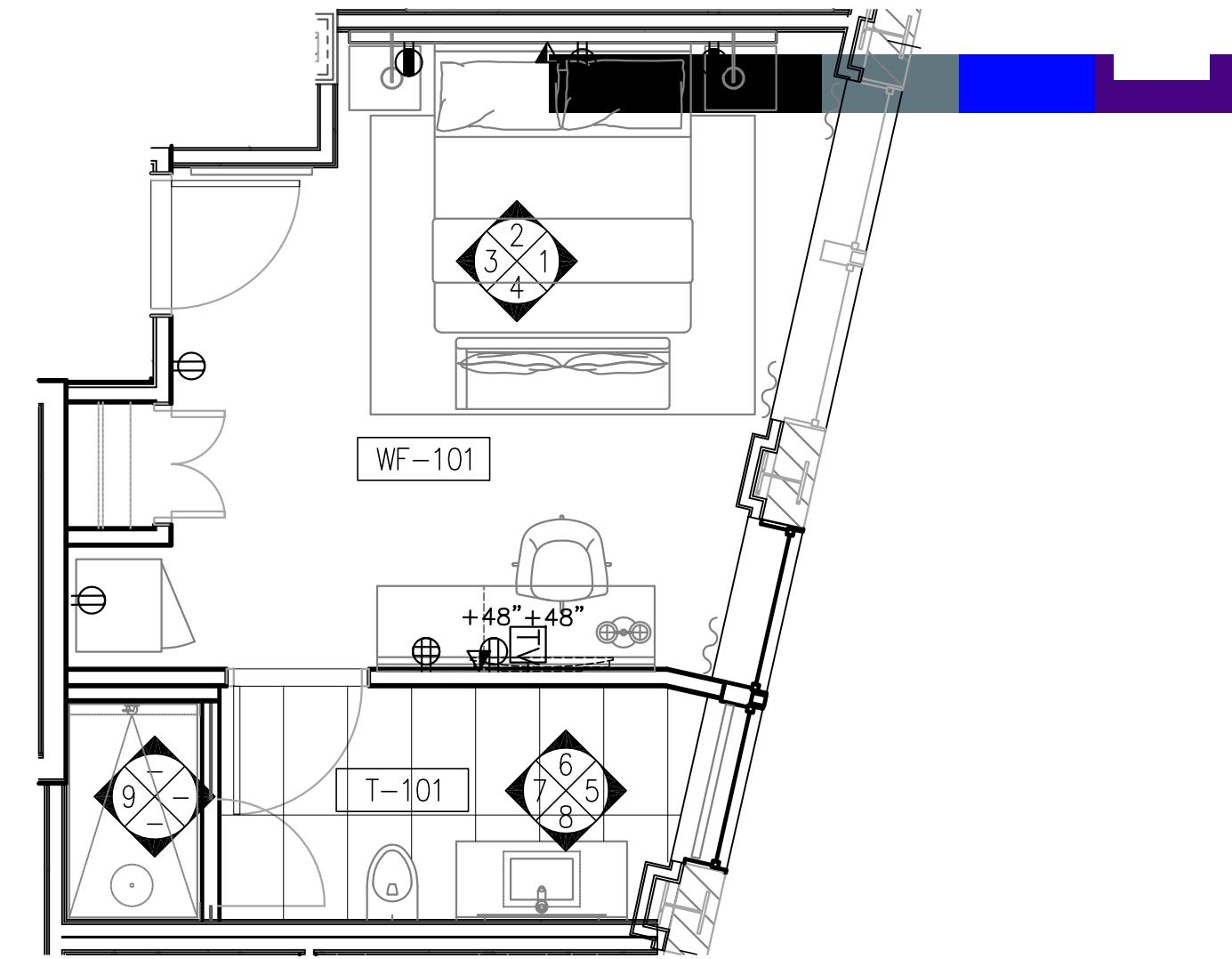
2 BEDROOM ELEVATION
3/8" = 1'-0"



1 BEDROOM ELEVATION
3/8" = 1'-0"



21 ROOM TYPE C REFLECTED CEILING PLAN
1/4" = 1'-0"



20 ROOM TYPE C FLOOR PLAN
1/4" = 1'-0"

Prepared For: **119 Development, LLC**
 P.O. Box 7468
 Portland, ME 04112

Consultant: **STONEHILL & TAYLOR ARCHITECTS AND PLANNERS**
 31 W. 27th Street New York, NY 10001
 (212) 226-8898 Fax (212) 941-1874

Architect: **ARCHETYPE architects**
 48 Union Wharf Portland, Maine 04101
 (207) 772-6022 Fax (207) 772-4056

Project: **Press Hotel**
 119 Exchange St.
 Portland, ME 04101

Revisions:	1	03-07-01	30% Marriott Submission
	2	03-09-09	60% Marriott Sub. & Pric.
	3	13-10-14	Issue for Bid & Marriott Rev.

Date: **06 SEPT, 2013**
 Scale: **RM TYPE C PLANS & ELEVATIONS**

ID-7.13