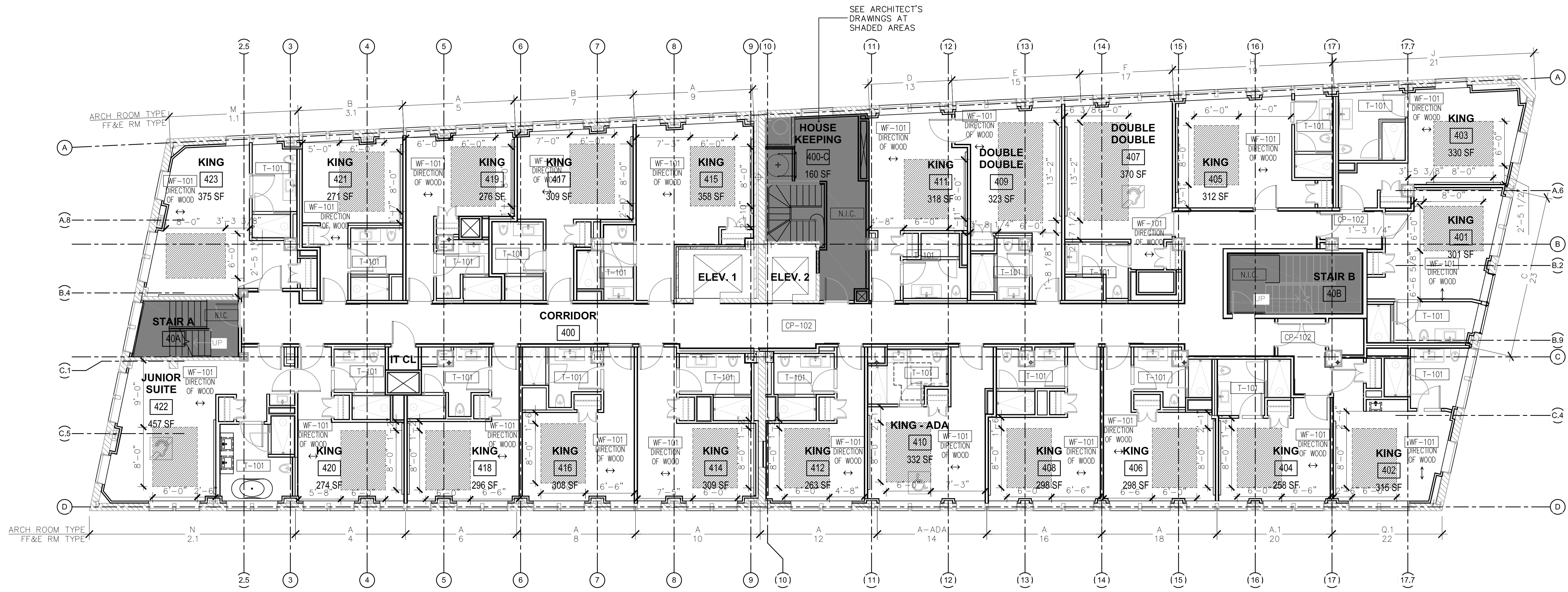




**SHEET NOTES:**

1. HATCHED AREAS INDICATE PLYWOOD INSET.
2. ALL GUESTROOM BATHROOM FLOORS TO HAVE TL-101, SHOWER FLOORS TO HAVE TL-102 TYP. U.O.N.
3. REFER TO ID-9.01 FOR FINISH SCHEDULE.

**2 | 5TH FLOOR - FINISH PLAN**  
1/8" = 1'-0"



**1 | 4TH FLOOR - FINISH PLAN**  
1/8" = 1'-0"

Prepared For:  
**119 Development, LLC**  
P.O. Box 7468  
Portland, ME 04112

Consultant:  
**STONEHILL & TAYLOR**  
ARCHITECTS AND PLANNERS  
31 W. 27th Street New York, NY 10001  
(212) 226-8898 Fax (212) 941-1874

Architect:  
**ARCHETYPE**  
architects  
48 Union Wharf Portland, Maine 04101  
(207) 772-6022 Fax (207) 772-4056

Project:  
**Press Hotel**  
119 Exchange St.  
Portland, ME 04101

Revisions:  
1 13-07-01 30% Marriott Submission  
2 13-09-09 60% Marriott Sub. & Pric.  
3 13-10-14 Issue for Bid & Marriott Rev.

Date: 06 SEPT, 2013  
Scale: 1/8" = 1'-0"  
**FLOOR 4&5**  
**FINISH PLANS**

**ID-4.04**