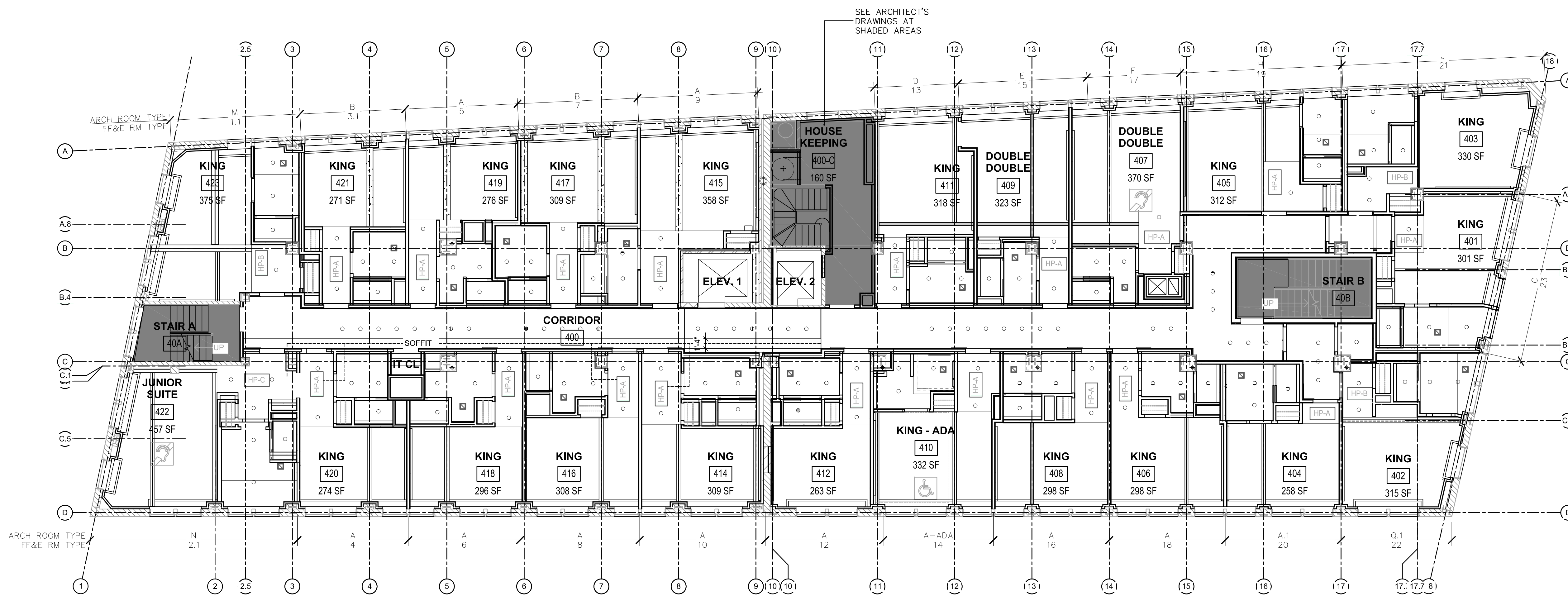




2 5TH FLOOR - RCP
1/8" = 1'-0"

- GUESTROOM RCP GENERAL NOTES:**
1. CORRIDOR CEILINGS TO BE PAINTED GYP. BD., PT-105.
 2. GUESTROOM CEILINGS TO BE PAINTED GYP. BD., PT-103.
 3. BATHROOM CEILINGS TO BE PAINTED GYP. BD., PT-105.
 4. VALANCES TO BE PAINTED GYP. BD., PT-112.
 5. REFER TO ARCHITECT'S DRAWINGS FOR LIGHTING PLAN AND CEILING HEIGHTS.



1 4TH FLOOR - RCP
1/8" = 1'-0"

- GUESTROOM RCP SHEET NOTES:**
1. ILLUMINATED CLOSET ROD WITH MICROSWITCH AT DOOR

Prepared For: **119 Development, LLC**
P.O. Box 7468
Portland, ME 04112

Consultant: **STONEHILL & TAYLOR ARCHITECTS AND PLANNERS**
31 W. 27th Street New York, NY 10001
(212) 226-8898 Fax (212) 941-1874

Architect: **ARCHETYPE architects**
48 Union Wharf Portland, Maine 04101
(207) 772-6022 Fax (207) 772-4056

Project: **Press Hotel**
119 Exchange St.
Portland, ME 04101

Date: **06 SEPT, 2013**
Scale: **1/8" = 1'-0"**

Revisions:
1 13-07-01 30% Marriott Submission
2 13-09-09 60% Marriott Sub. & Pric.
3 13-10-14 Issue for Bid & Marriott Rev.

FLOORS 4&5 REFLECTED CEILING PLANS

ID-2.03