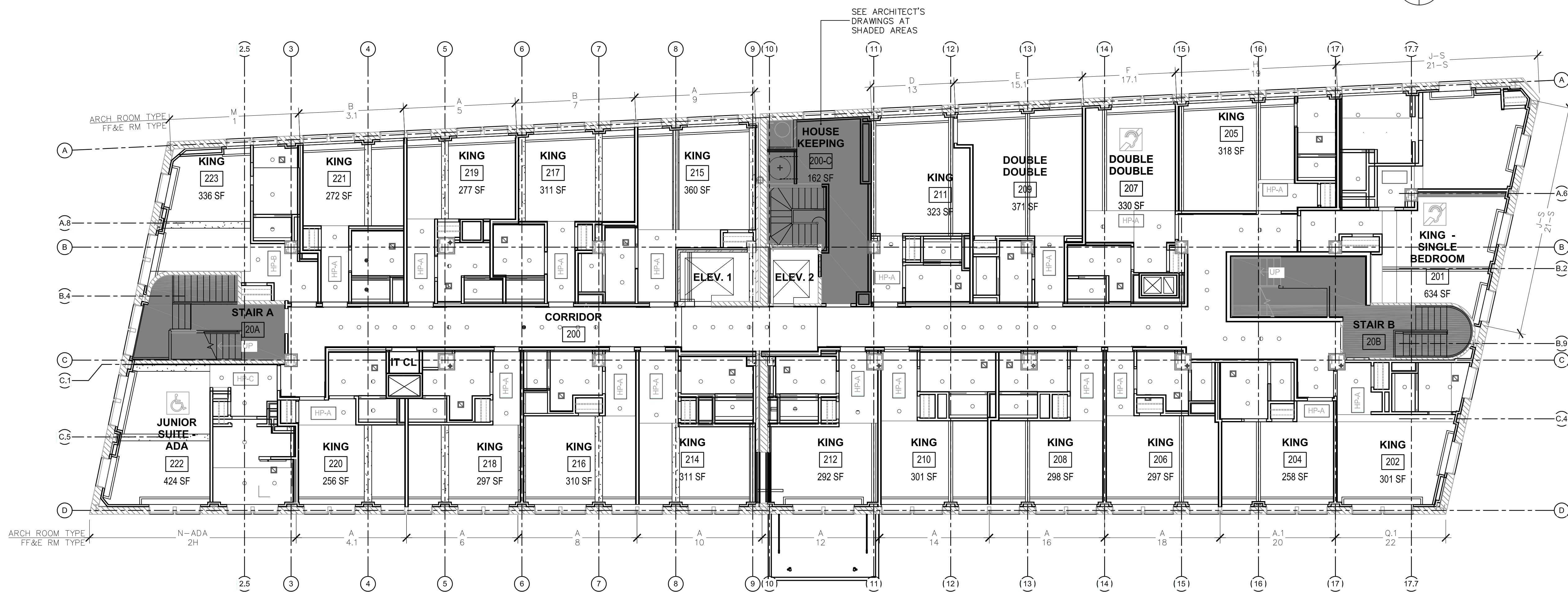


2 | 3RD FLOOR - RCP
1/8" = 1'-0"

- GUESTROOM RCP GENERAL NOTES:
1. CORRIDOR CEILINGS TO BE PAINTED GYP. BD., PT-105.
 2. GUESTROOM CEILINGS TO BE PAINTED GYP. BD., PT-103.
 3. BATHROOM CEILINGS TO BE PAINTED GYP. BD., PT-105.
 4. VALANCES TO BE PAINTED GYP. BD., PT-112.
 5. REFER TO ARCHITECT'S DRAWINGS FOR LIGHTING PLAN AND CEILING HEIGHTS.



1 | 2ND FLOOR - RCP
1/8" = 1'-0"

- GUESTROOM RCP SHEET NOTES:
- 1 ILLUMINATED CLOSET ROD WITH MICROSWITCH AT DOOR

Prepared For:	119 Development, LLC P.O. Box 7468 Portland, ME 04112
Consultant:	STONEHILL & TAYLOR ARCHITECTS AND PLANNERS 48 Union Wharf Portland, Maine 04101 (207) 772-6022 Fax (207) 772-4056
Architect:	ARCHETYPE architects 48 Union Wharf Portland, Maine 04101 (207) 772-6022 Fax (207) 772-4056
Project:	Press Hotel 119 Exchange St. Portland, ME 04101
Revisions:	1 13-07-01 30% Marriott Submission 2 13-09-09 60% Marriott Sub. & Pric. 3 13-10-14 Issue for Bid & Marriott Rev.
Date:	06 SEPT, 2013
Scale:	1/8" = 1'-0"
FLOORS 2&3 REFLECTED CEILING PLANS	
ID-2.02	