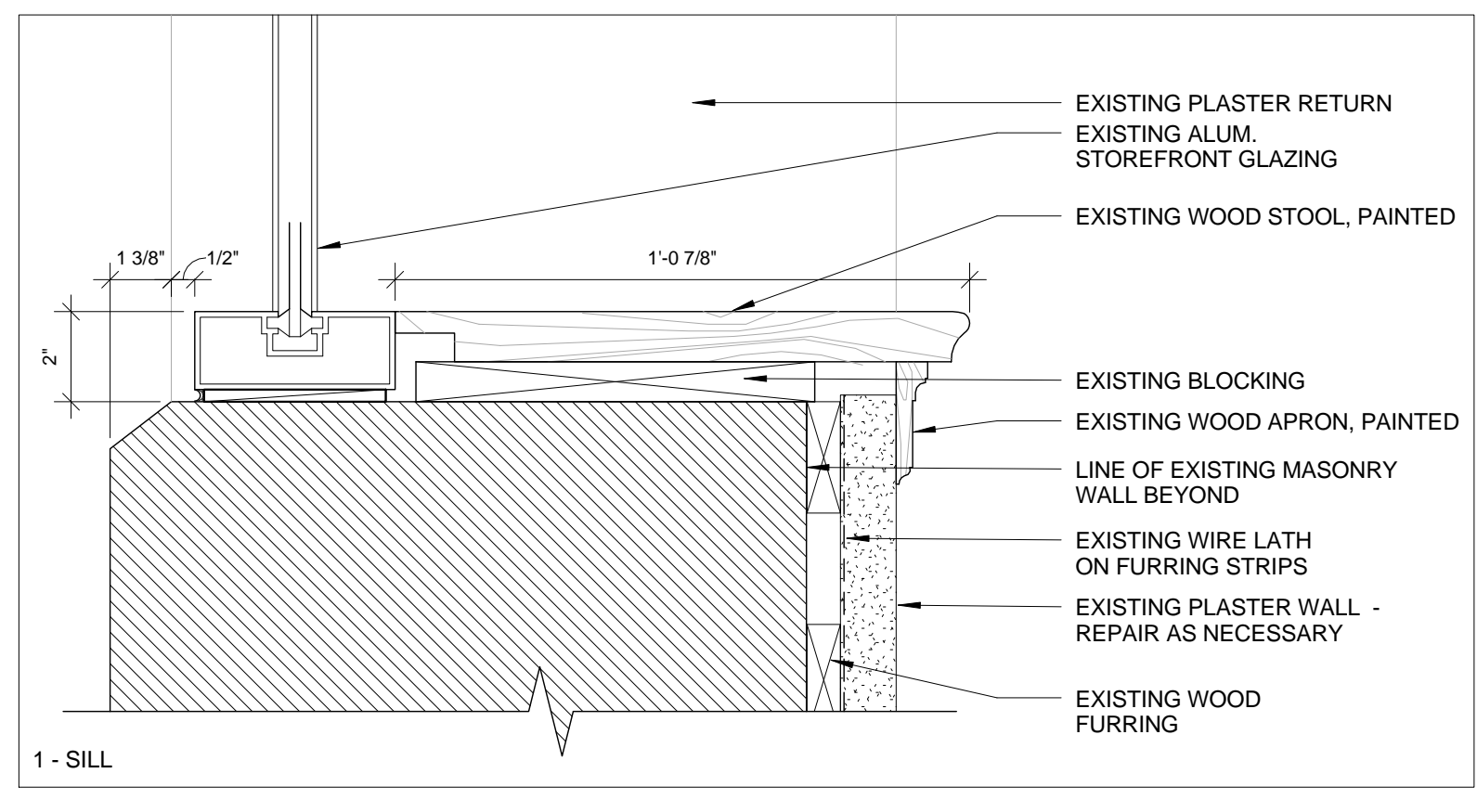
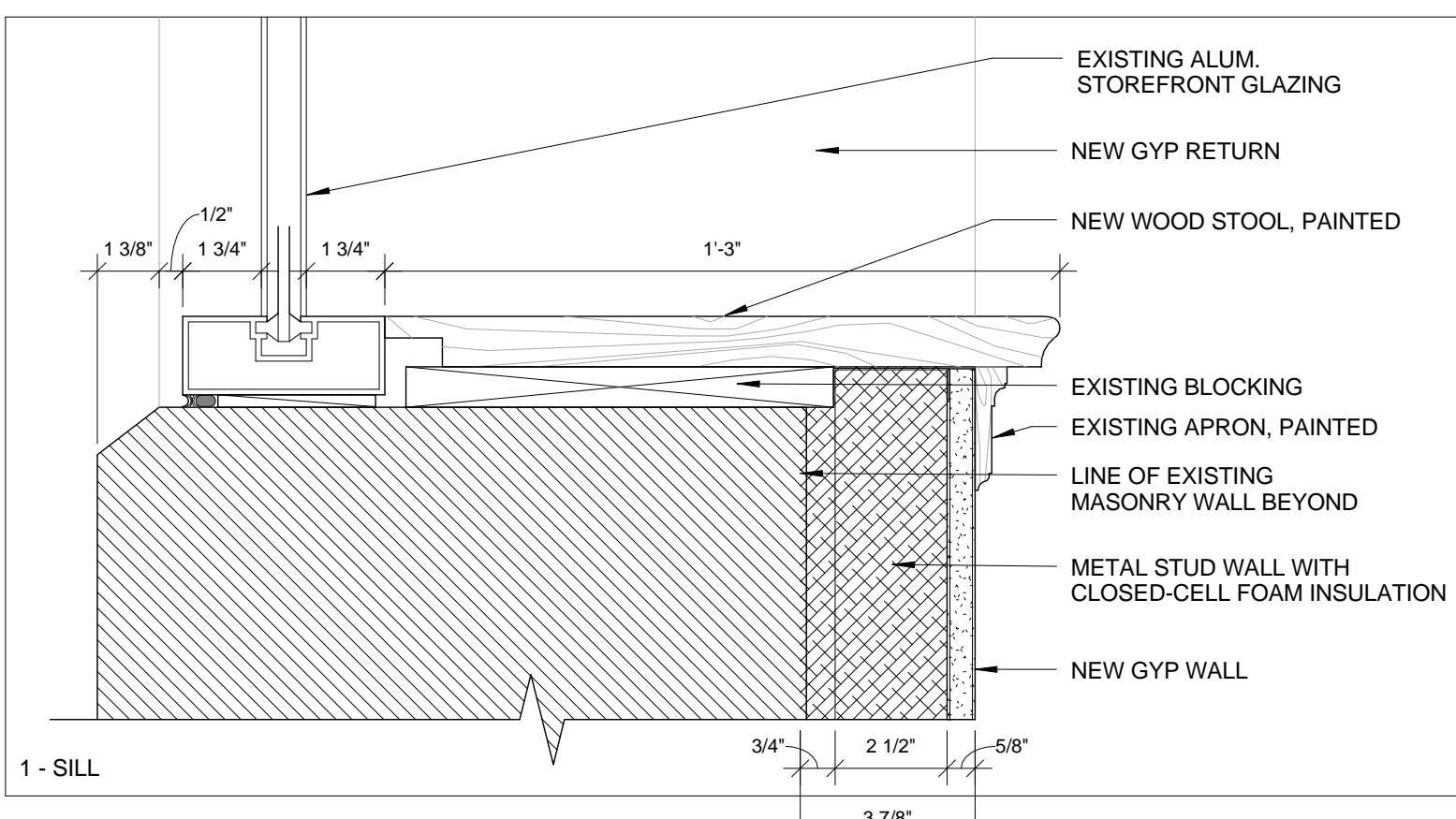
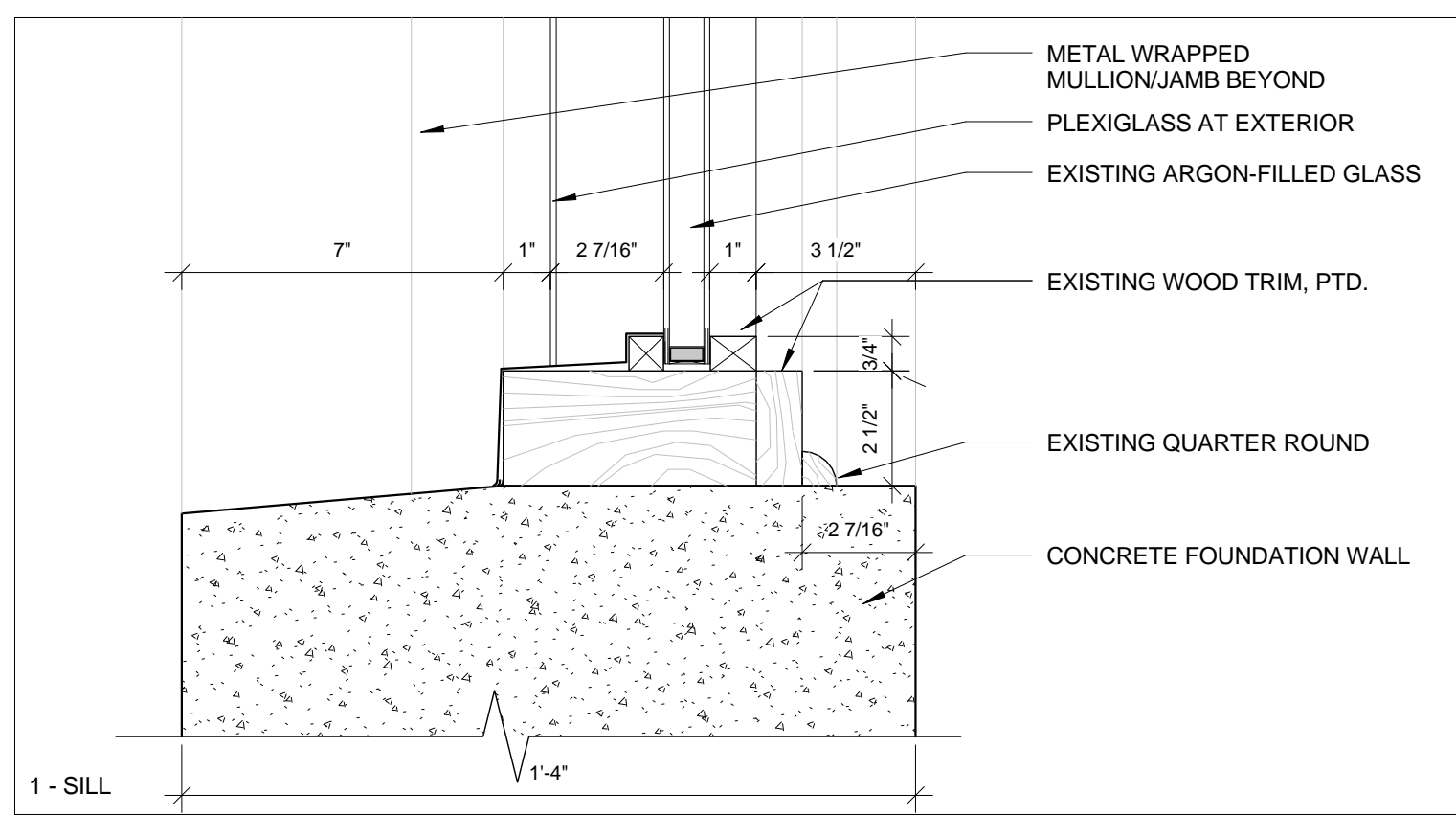
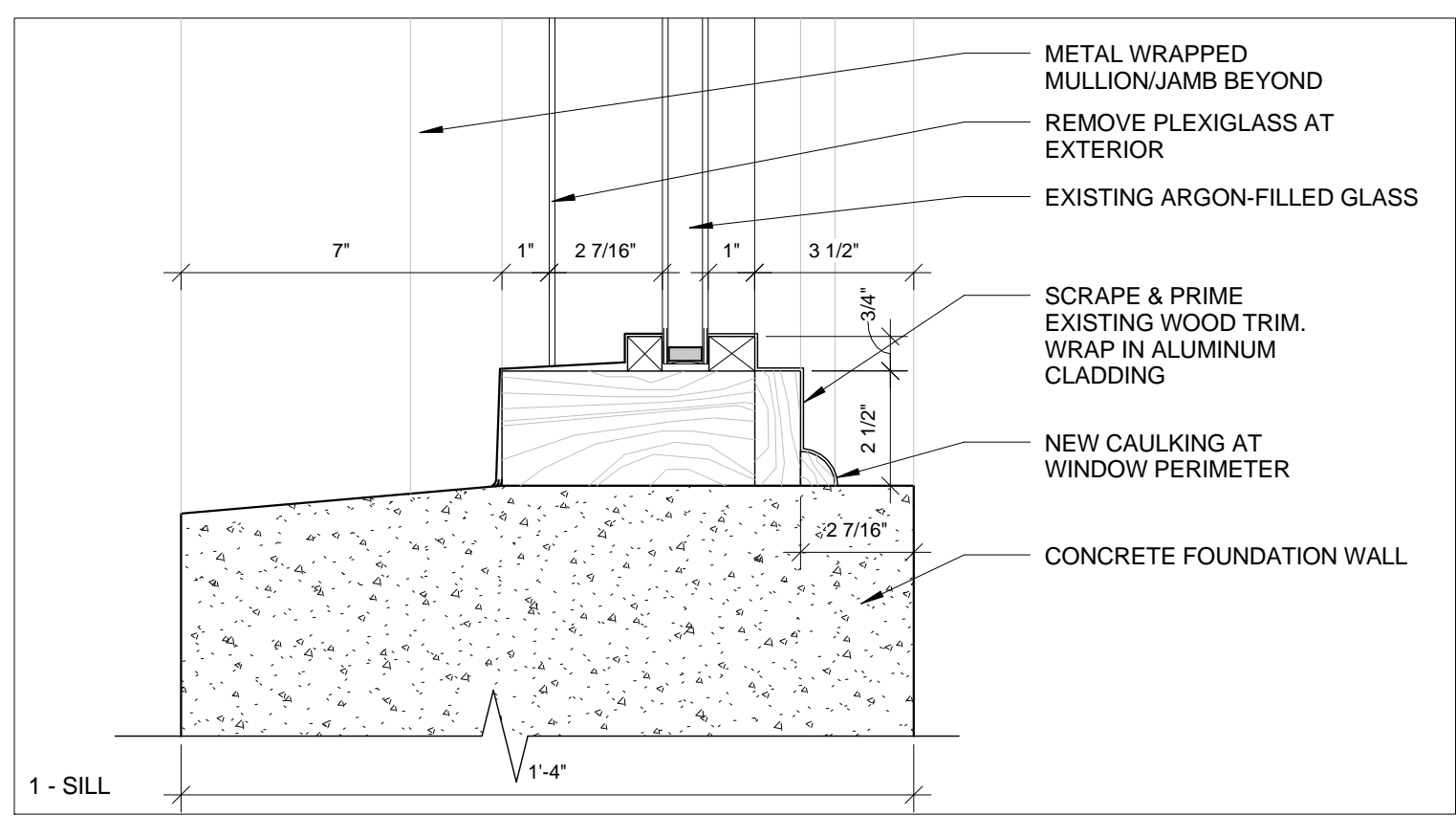
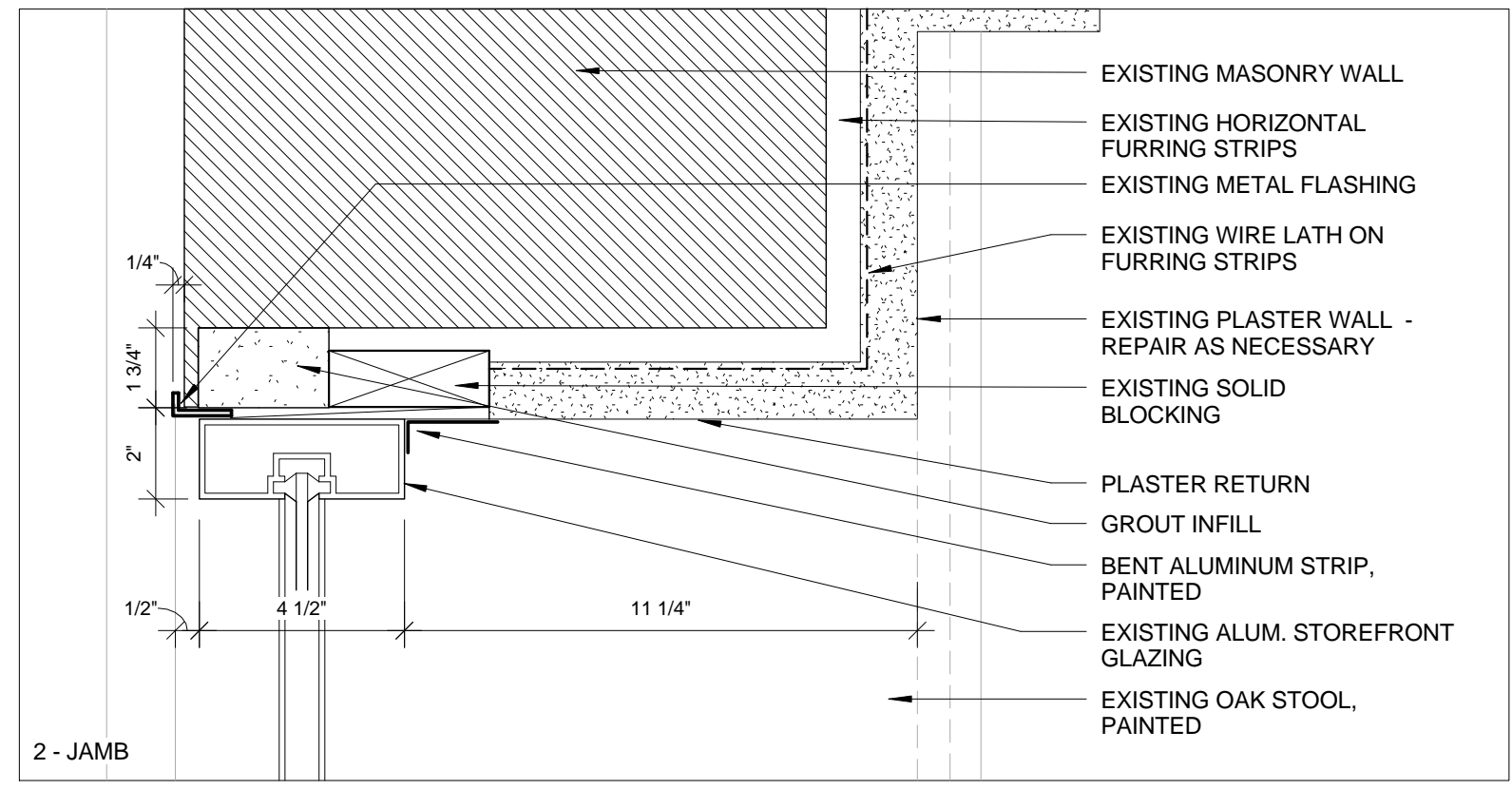
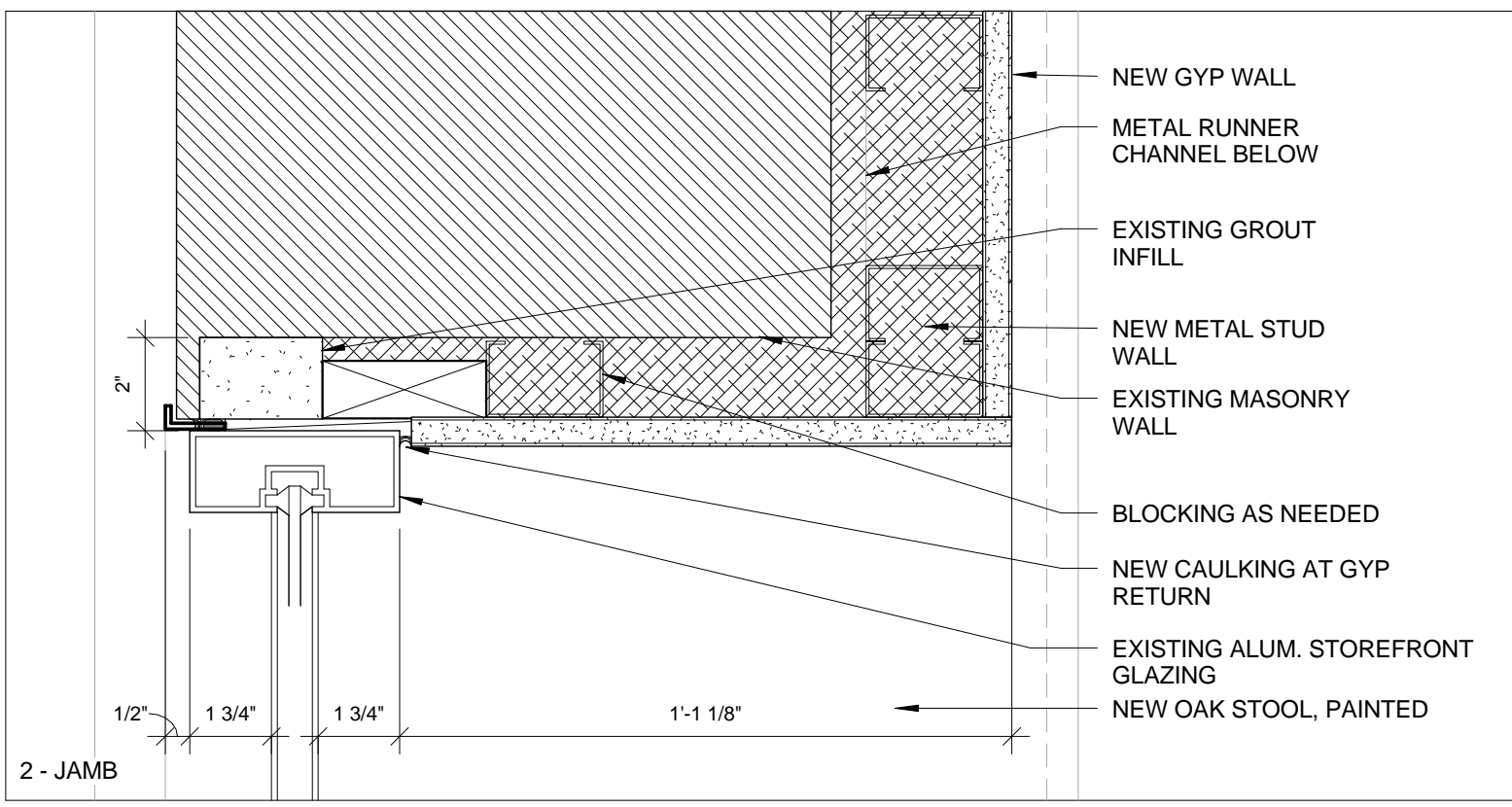
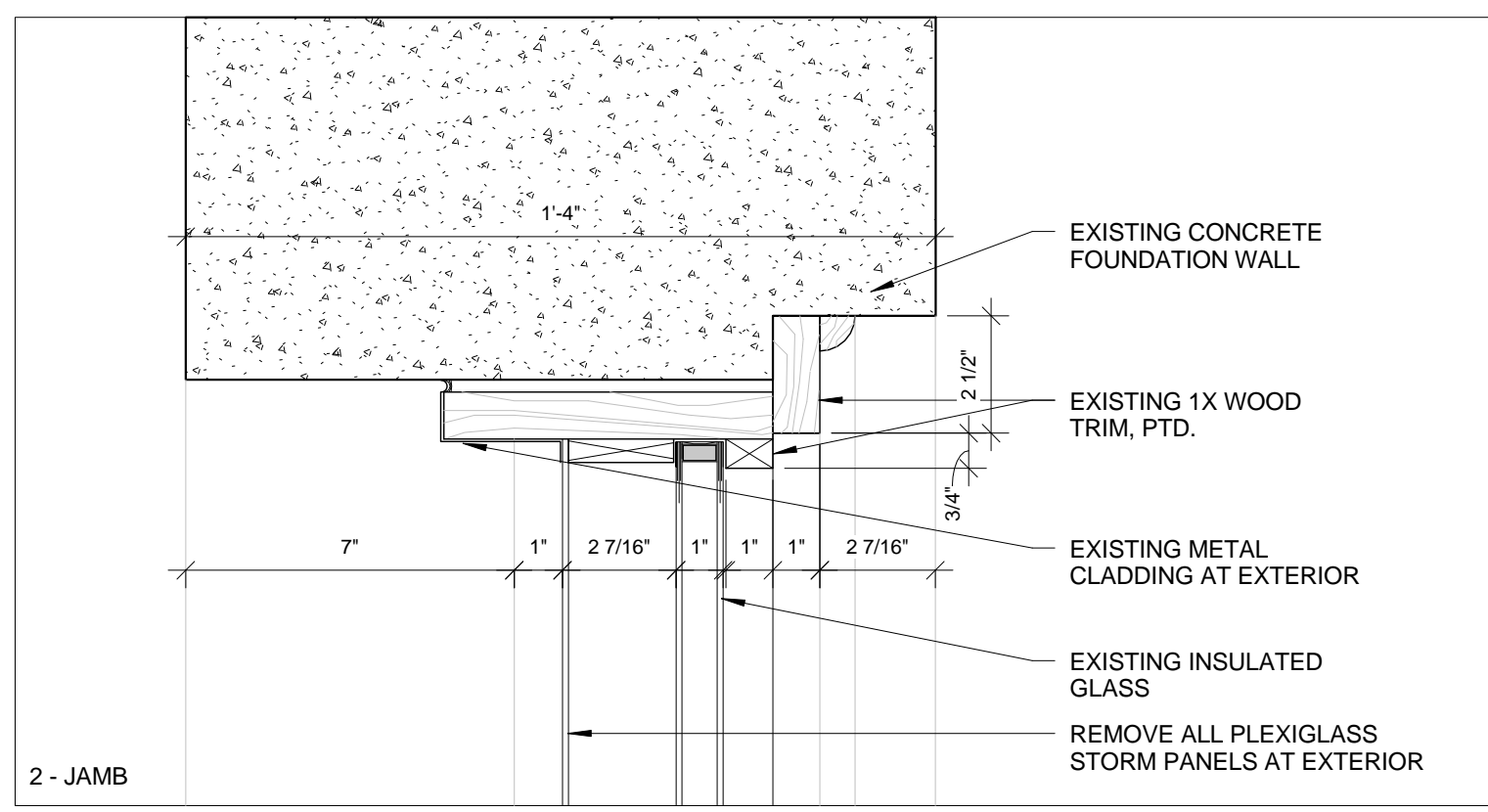
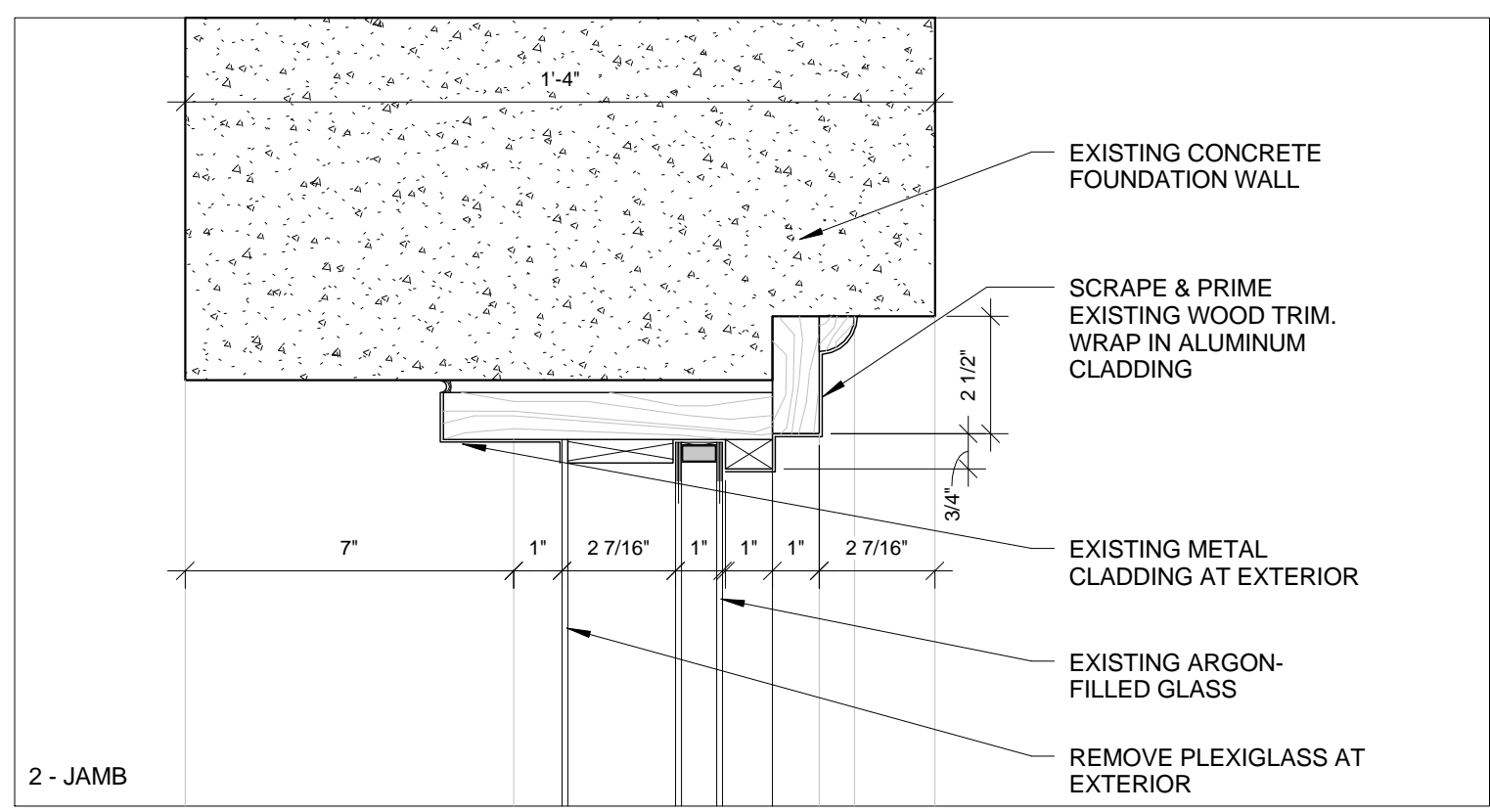
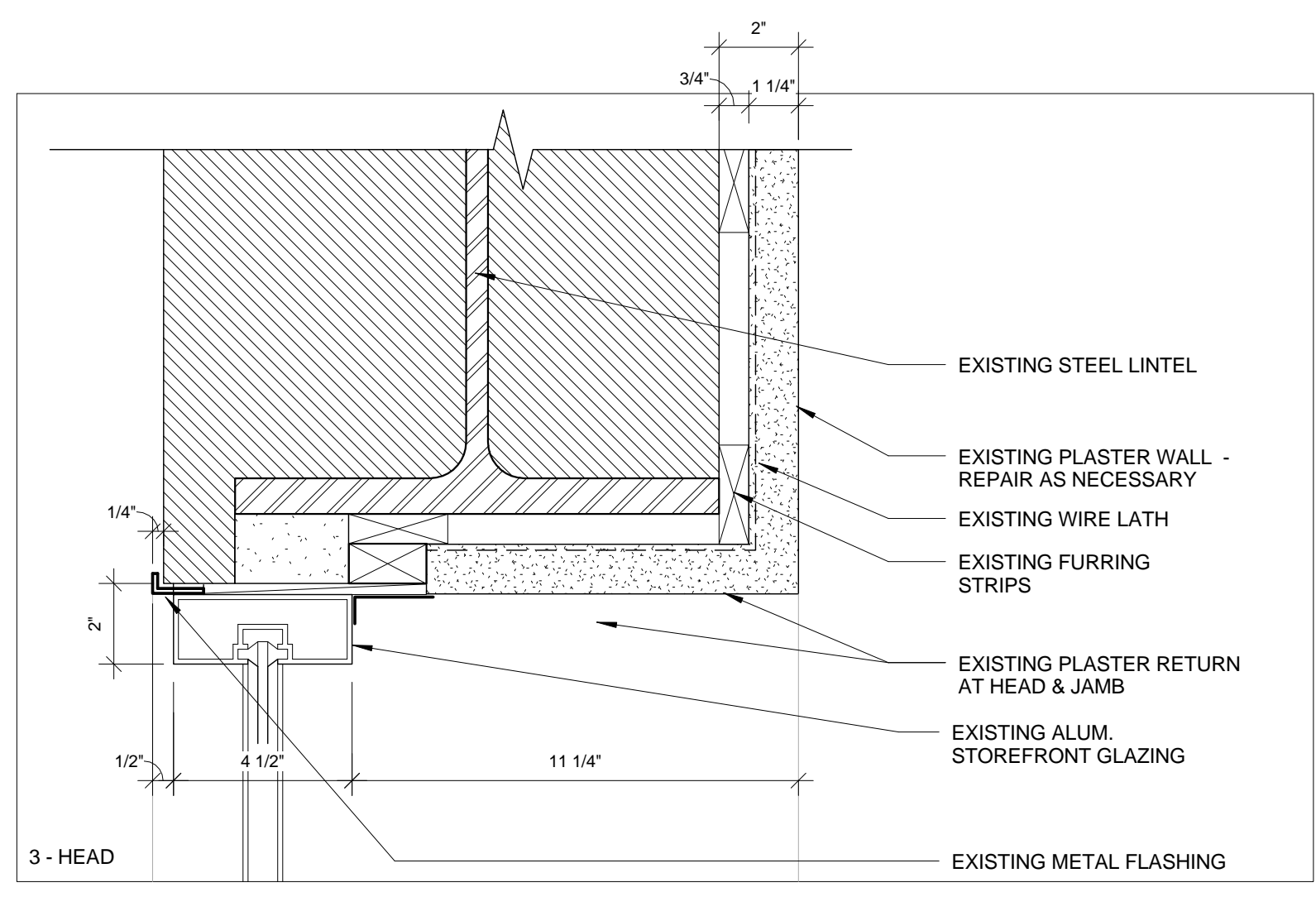
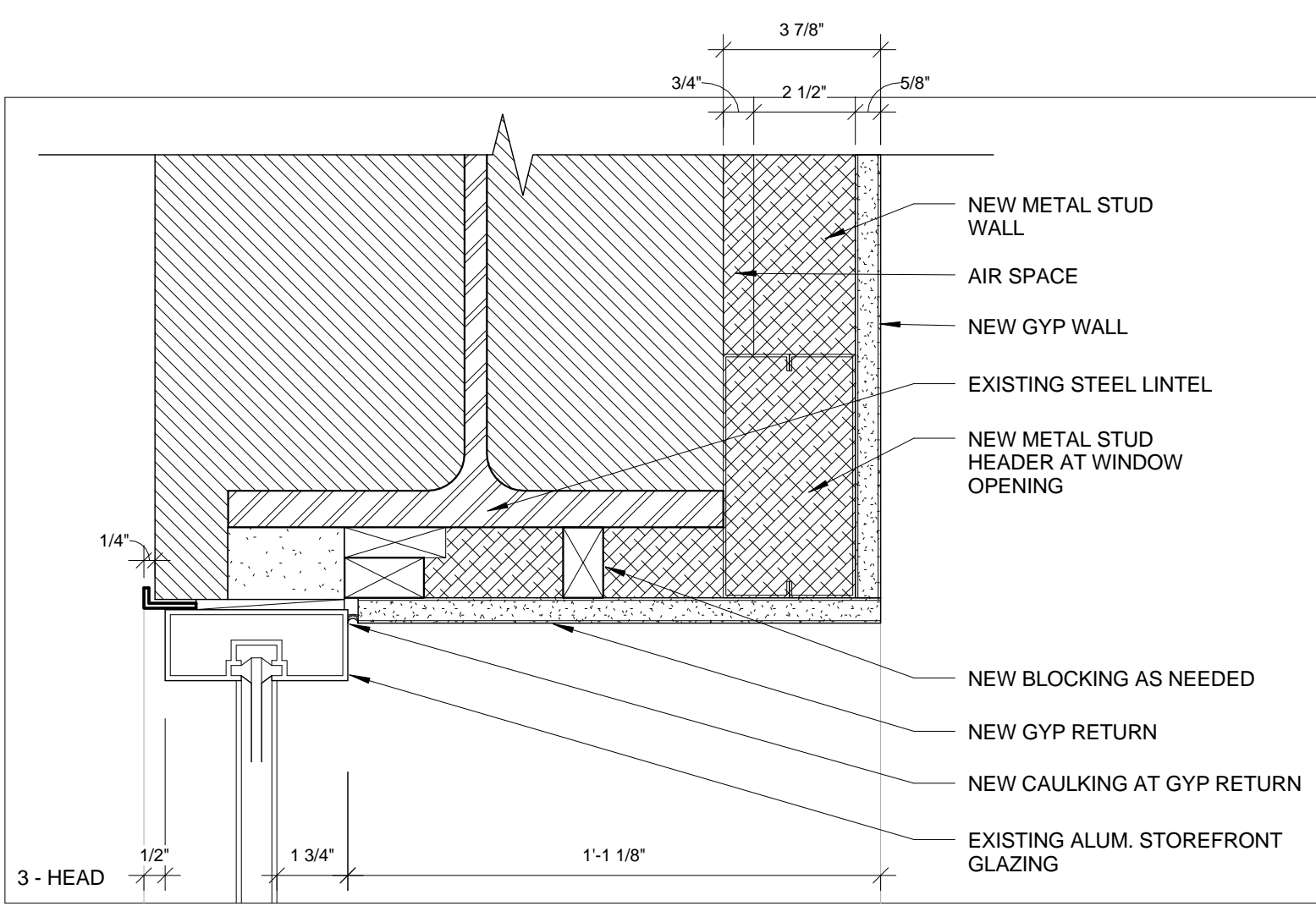
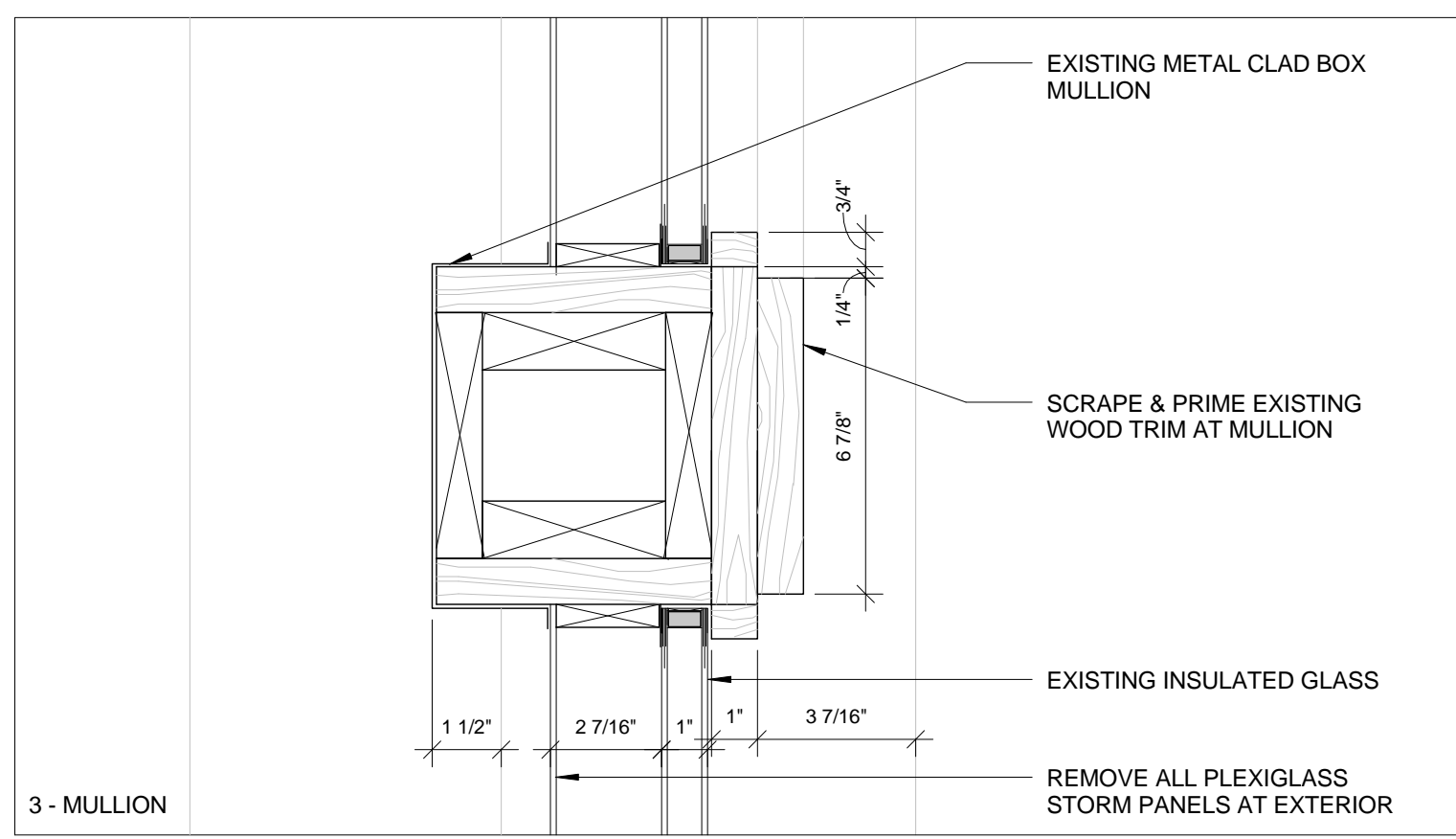
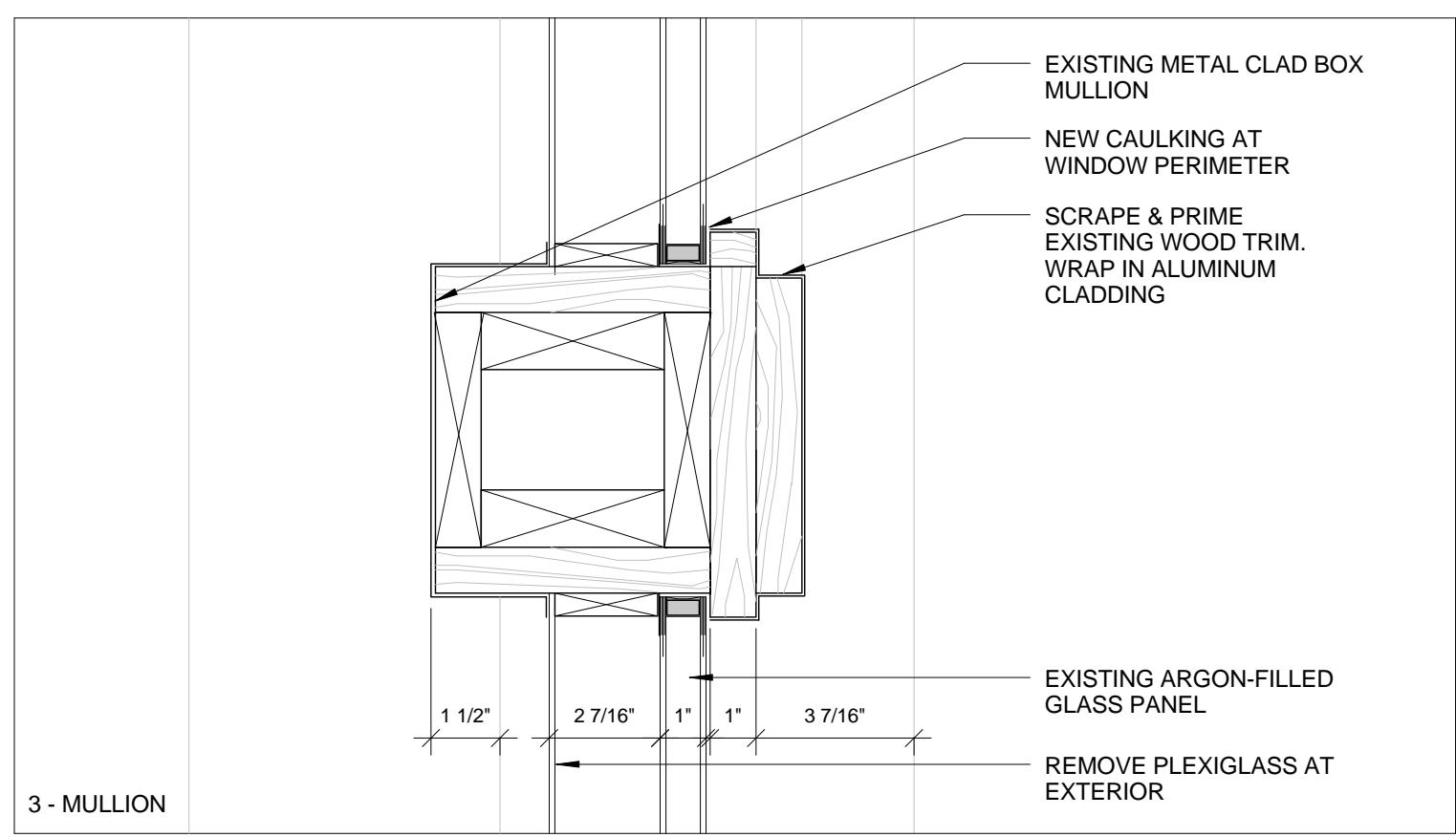


- REPLACE ANY DAMAGED WINDOW TRIM IN KIND & PAINT OR STAIN TO SUIT. REFER TO FINISH SCHEDULE.
- TRAVEL STOP TO BE ADDED TO ALL GUESTROOM WINDOWS ALLOWING NO MORE THAN A 4" CLEAR VERTICAL OPENING.
- VERIFY ALL REPLACEMENT WINDOW DIMENSIONS IN FIELD TO ENSURE PROPER FIT & ALIGNMENT WITH ADJACENT WINDOWS.
- ENSURE THAT ALL CLERESTORY WINDOW GLAZING IS TEMPERED. REPLACE ANY WITH TEMPERED GLAZING AS REQUIRED.
- ANY GLAZING INTO TOILET ROOMS TO BE REPLACED WITH OBSCURED GLAZING.



4 NEW CLERESTORY WINDOW SECTION
3" = 1'-0"

3 EXISTING CLERESTORY WINDOW SECTION
3" = 1'-0"

2 NEW ALUM. WINDOW & TRIM DETAILS W/ NEW FURRING WALL
3" = 1'-0"

1 EXISTING ALUMINUM WINDOW & TRIM DETAILS
3" = 1'-0"

Prepared For:
119 Development, LLC
P.O. Box 7486
Portland, ME 04112

Consultant:
ARCHETYPE architects
48 Union Wharf Portland, Maine 04101
(207) 772-6022 Fax (207) 772-4056

Project:
PRESS HOTEL
390 CONGRESS STREET
PORTLAND, ME 04101

Revisions:
2 13_09-09 60% Marriott Sub. & Pric.
3 13_10-14 Issue for Bid & Marriott Revw

Date: 14 OCT 13
Scale: 3" = 1'-0"
WINDOW DETAILS

A8.11