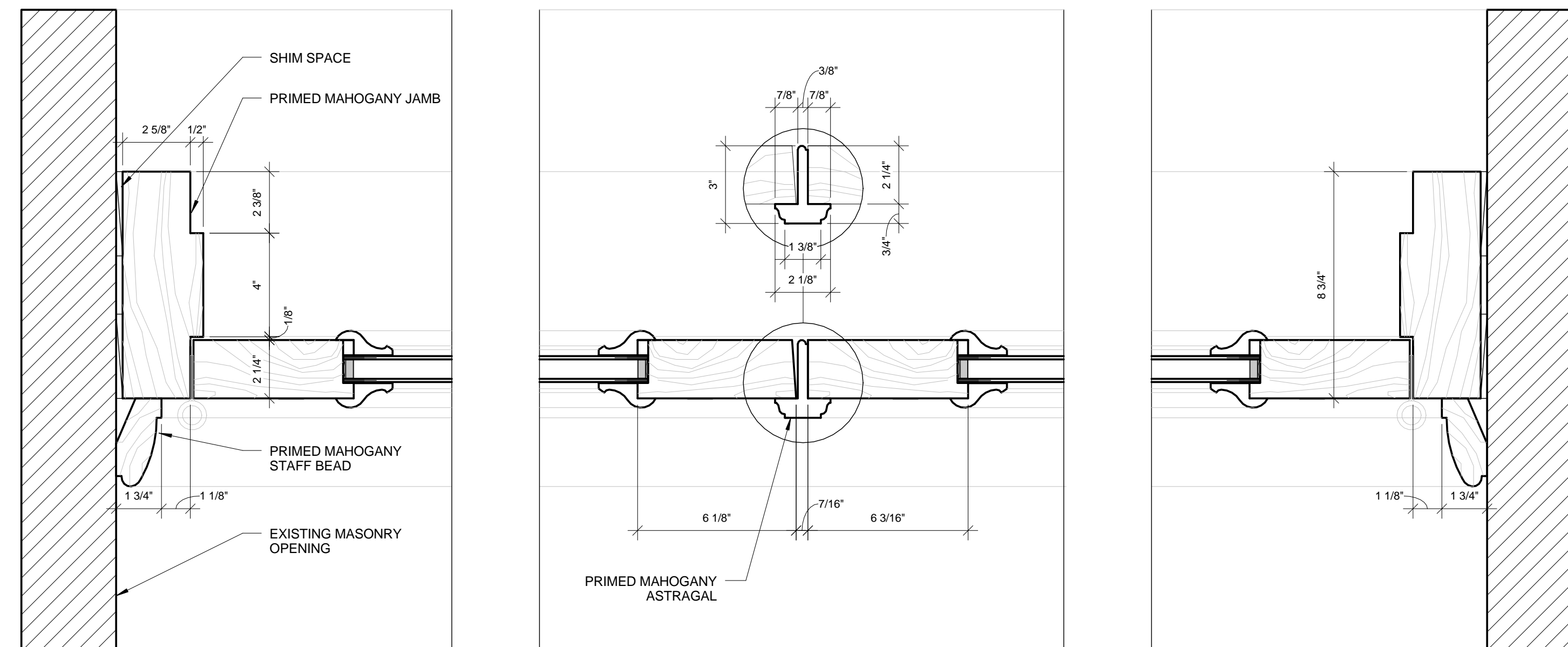


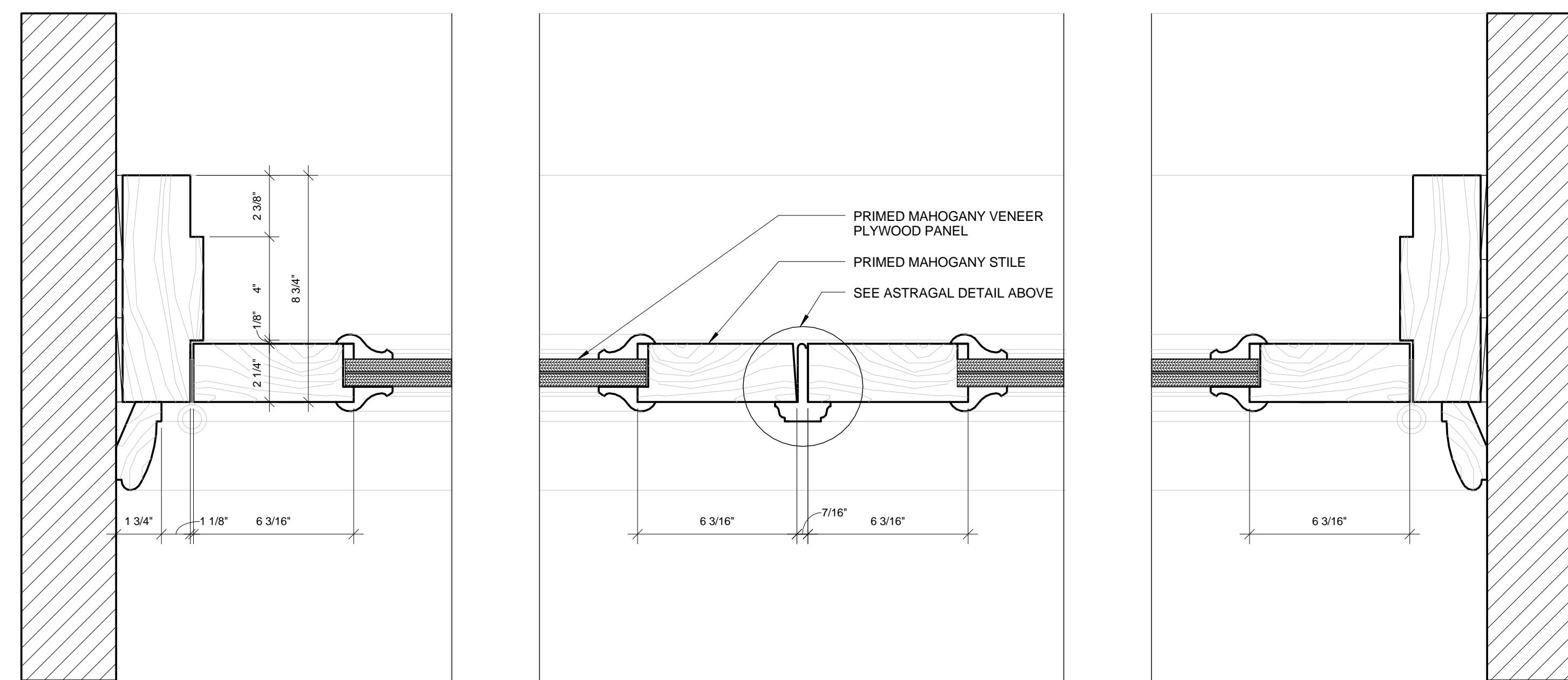
4 HISTORIC ENTRY DOOR HORIZONTAL SECTION AT TRANSOM

3" = 1'-0"



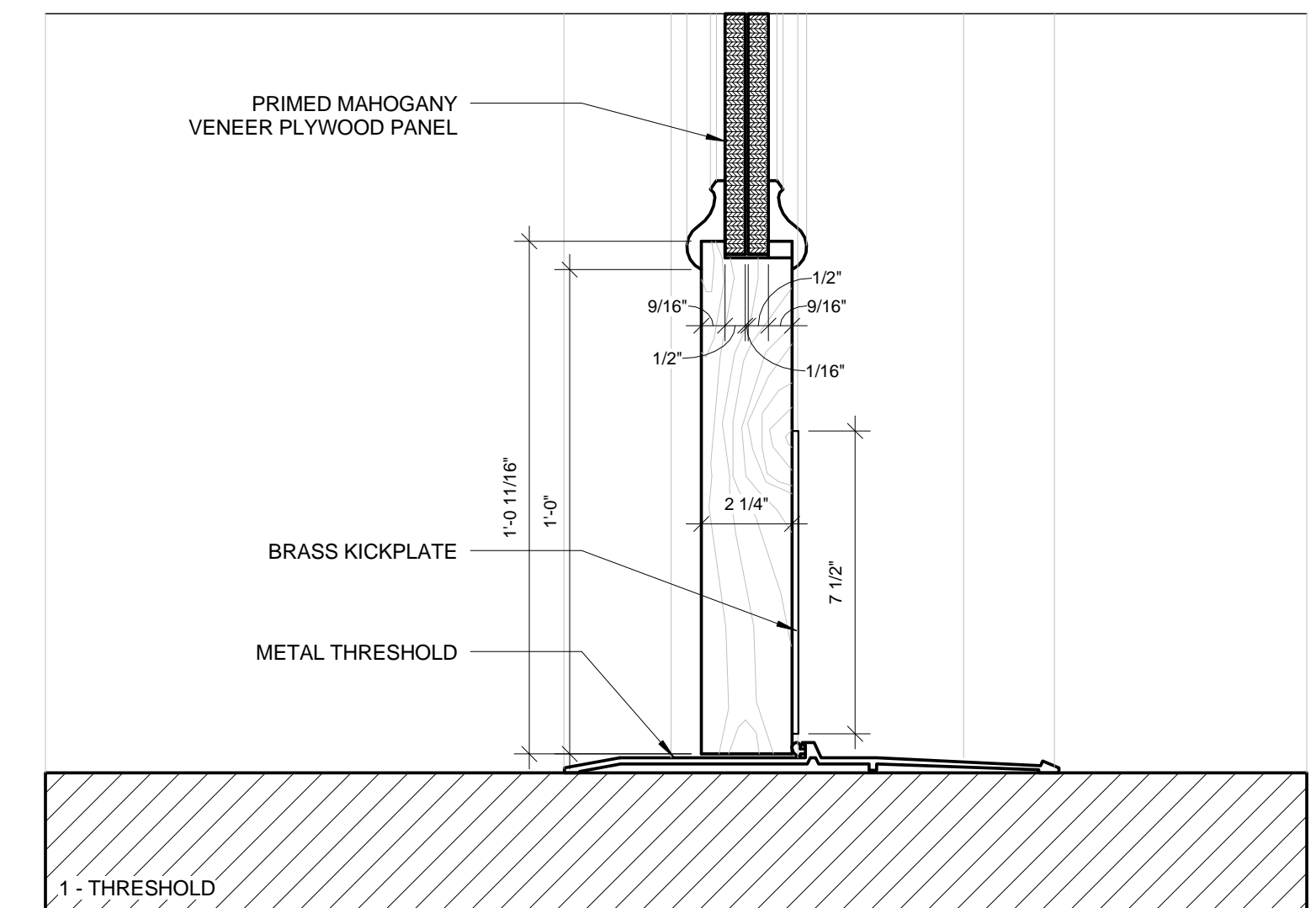
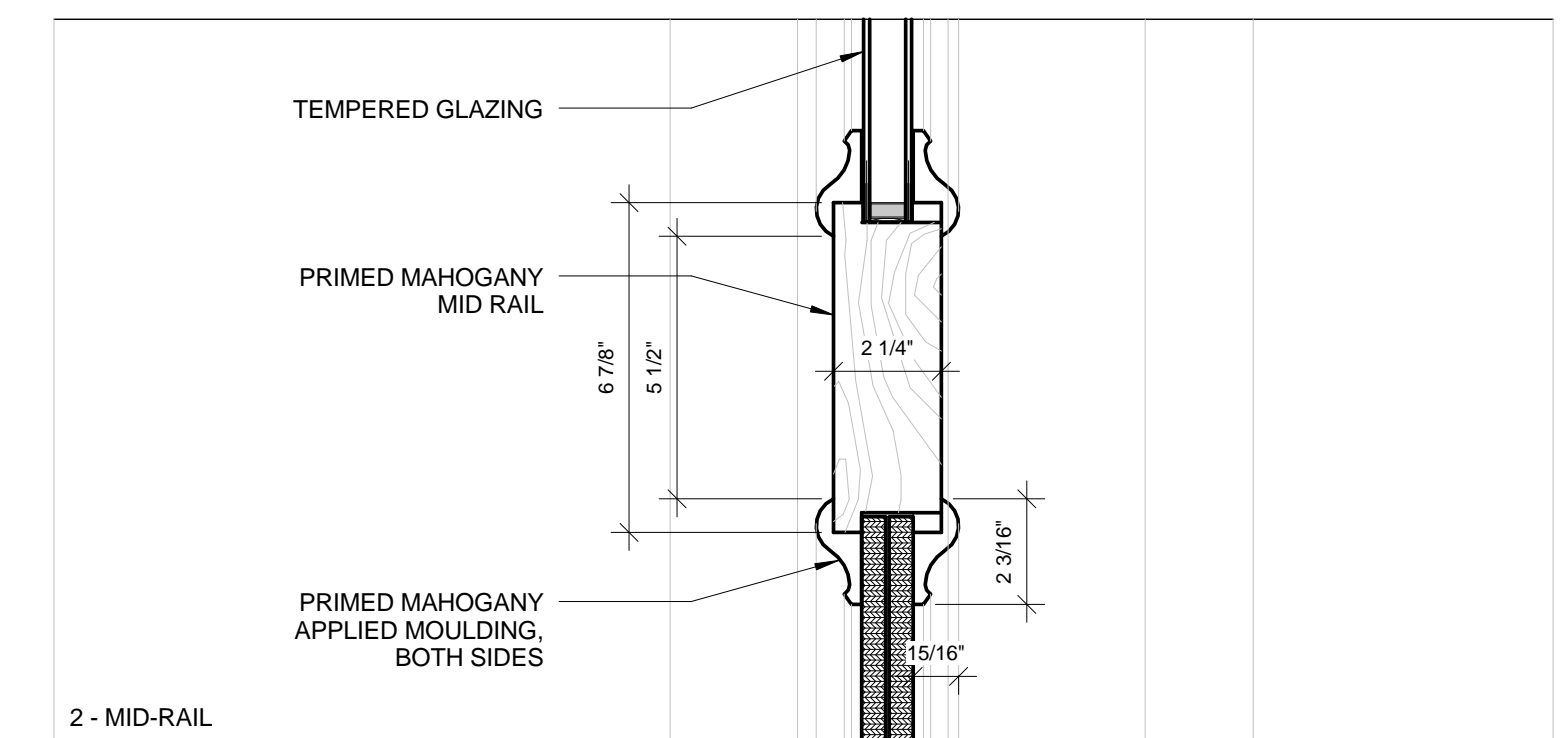
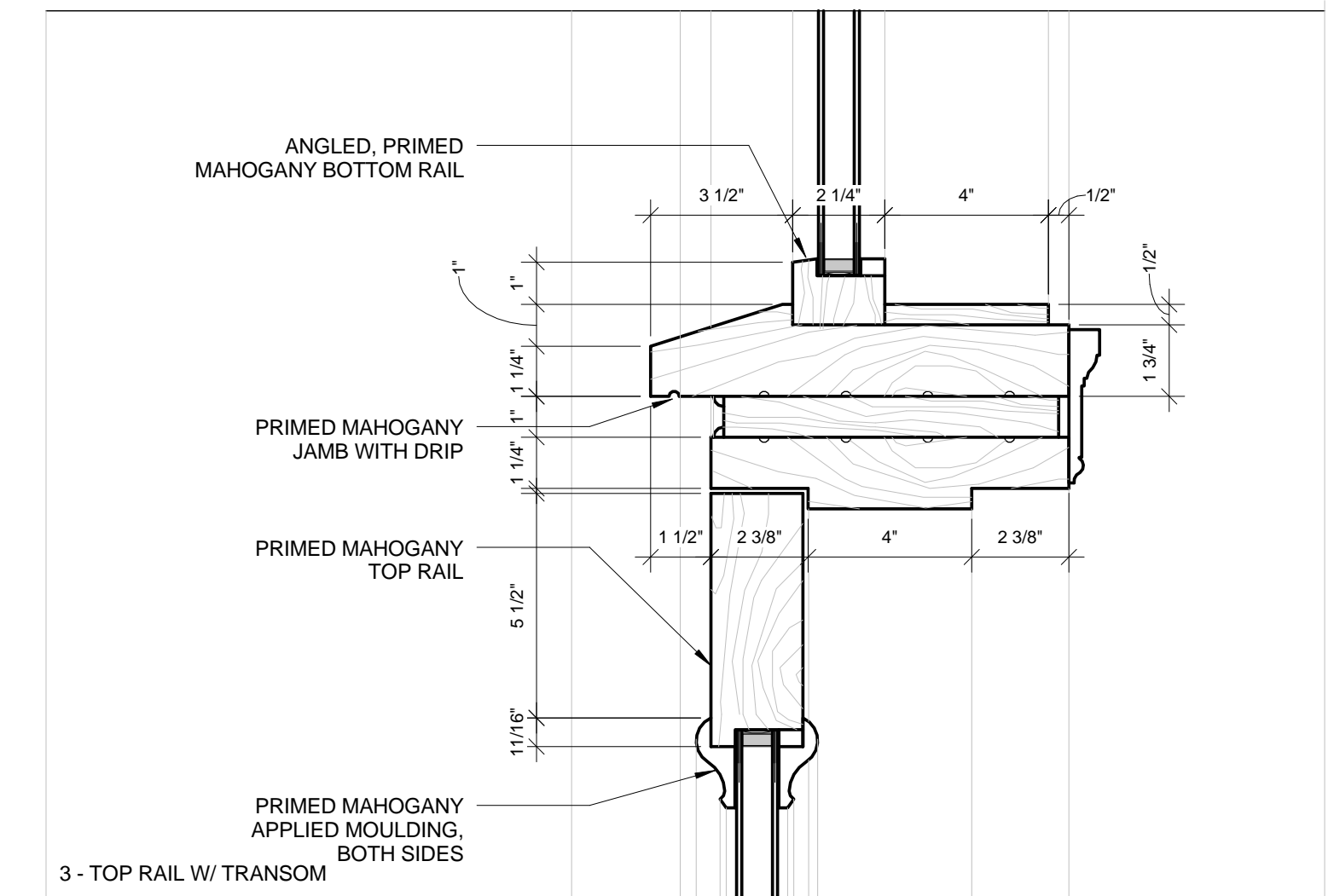
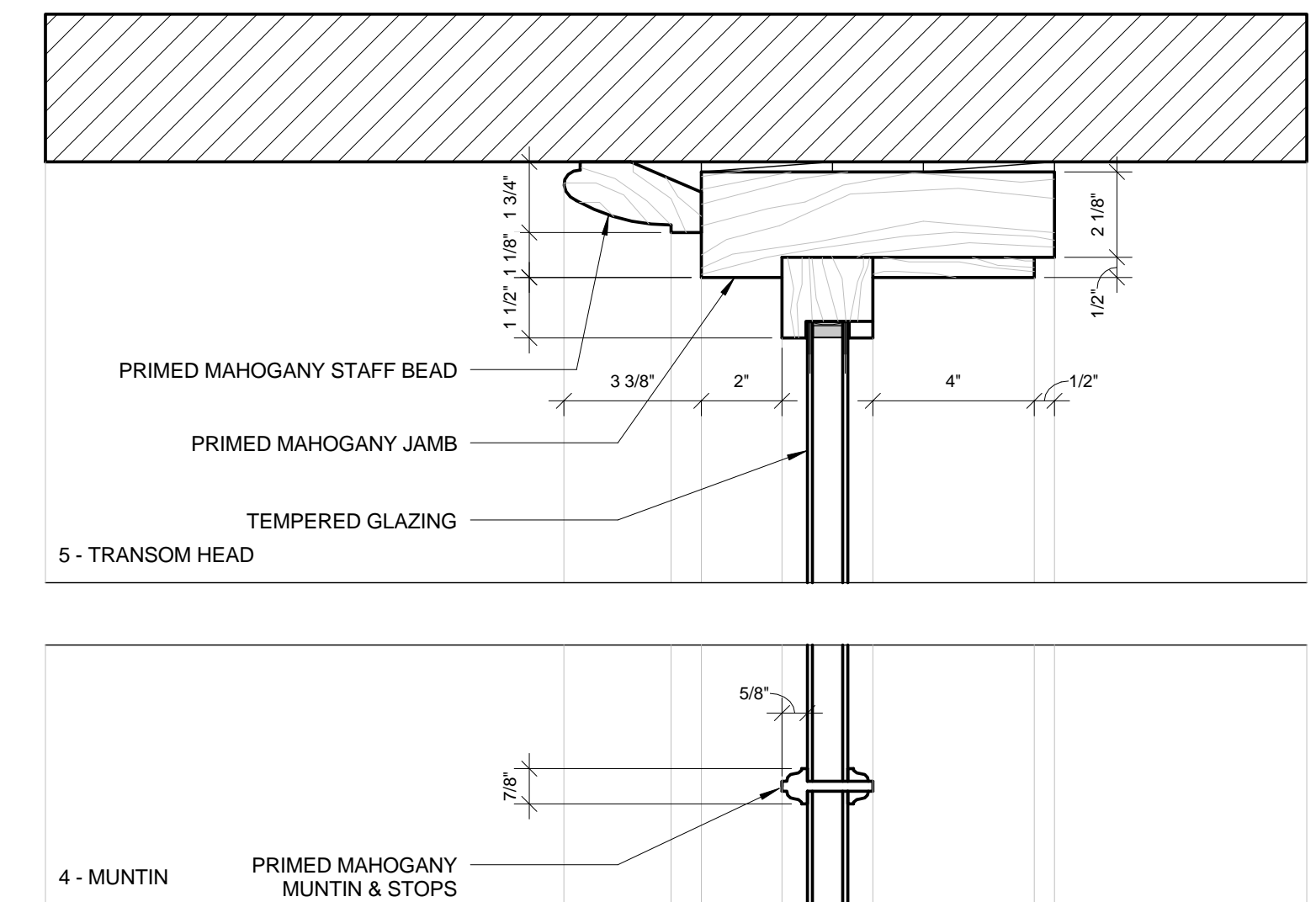
3 HISTORIC ENTRY DOOR HORIZONTAL SECTION AT GLAZING

3" = 1'-0"



2 HISTORIC ENTRY DOOR HORIZONTAL SECTION AT RECESSED PANEL WITH APPLIED MOULDING

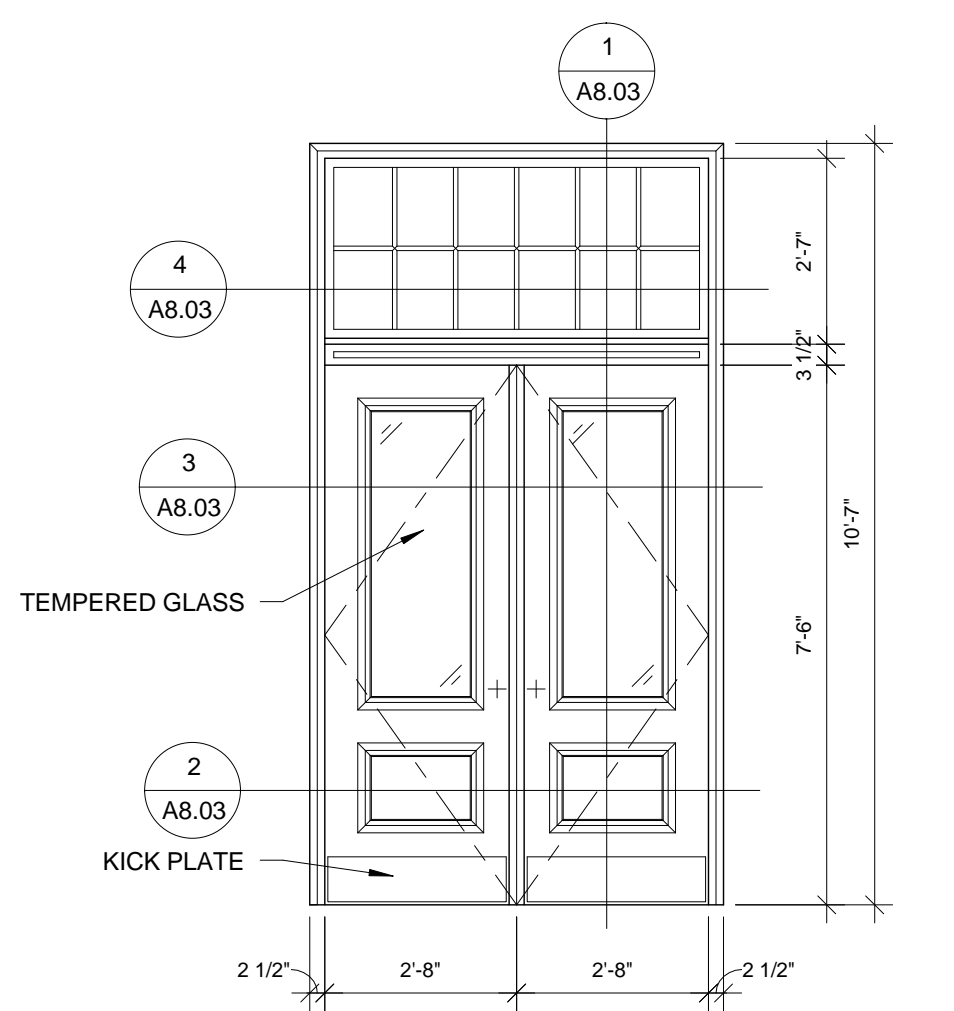
3" = 1'-0"



1 HISTORIC ENTRY DOOR VERTICAL SECTION

3" = 1'-0"

NOTE:
ONE OF TWO IDENTICAL ENTRY DOORS AT THE FEDERAL STREET ENTRY & MARKET STREET ENTRY. SEE PLANS & ELEVATIONS FOR ADDITIONAL LOCATION INFORMATION. SEE DOOR SCHEDULE FOR HARDWARE SPECS.



5 HISTORIC ENTRY DOOR ELEVATION

3/8" = 1'-0"

Prepared For:
119 Development, LLC
P.O. Box 7486
Portland, ME 04112

Consultant:
ARCHETYPE architects
48 Union Wharf Portland, Maine 04101
(207) 772-6022 Fax (207) 772-4056

Project:
PRESS HOTEL
390 CONGRESS STREET
PORTLAND, ME 04101

Revisions:
2 13_09-09 60% Marriott Sub. & Pric.
3 13_10-14 Issue for Bid & Marriott Revw

Date: 14 OCT 13
Scale: As indicated
EXTERIOR HISTORIC DOOR DETAILS

A8.03