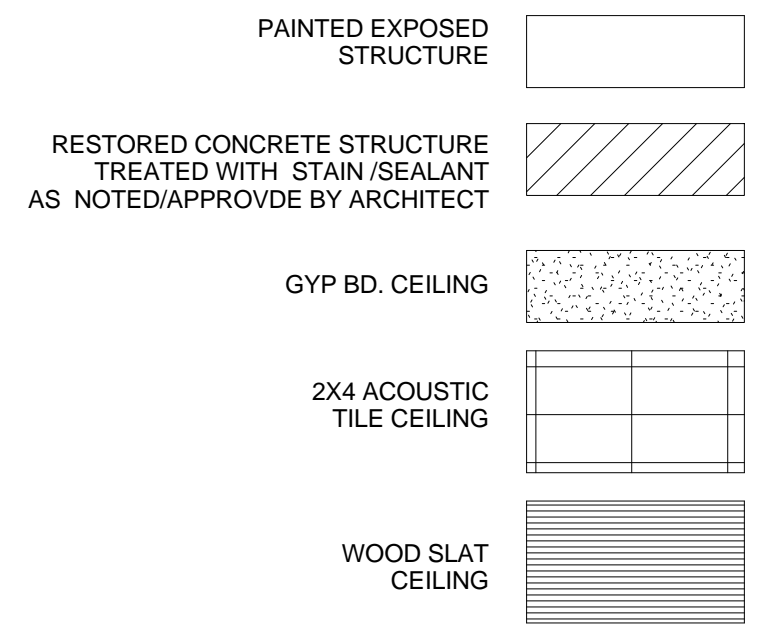
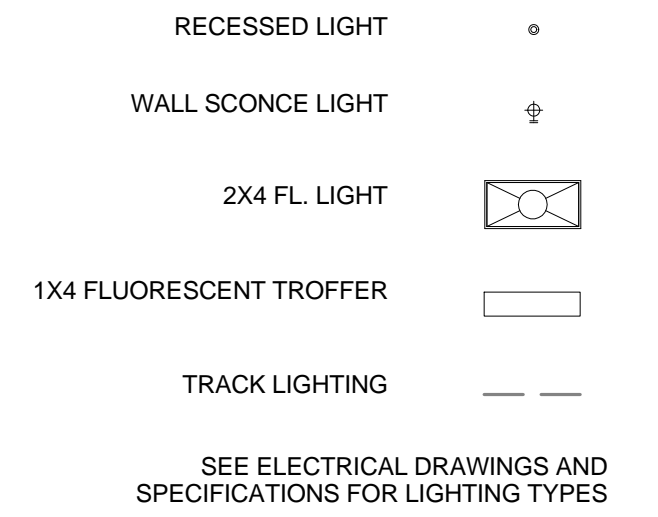


**CEILING LEGEND**

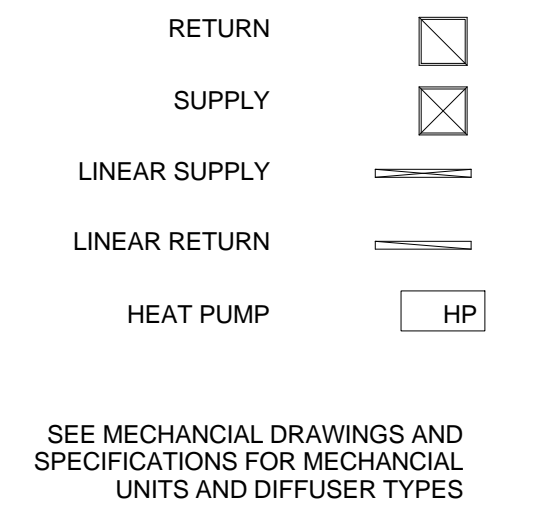
**CEILING TYPES**



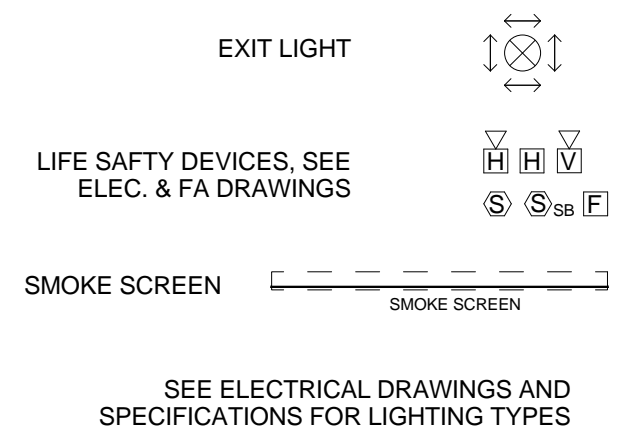
**LIGHTING**



**MECHANICAL**



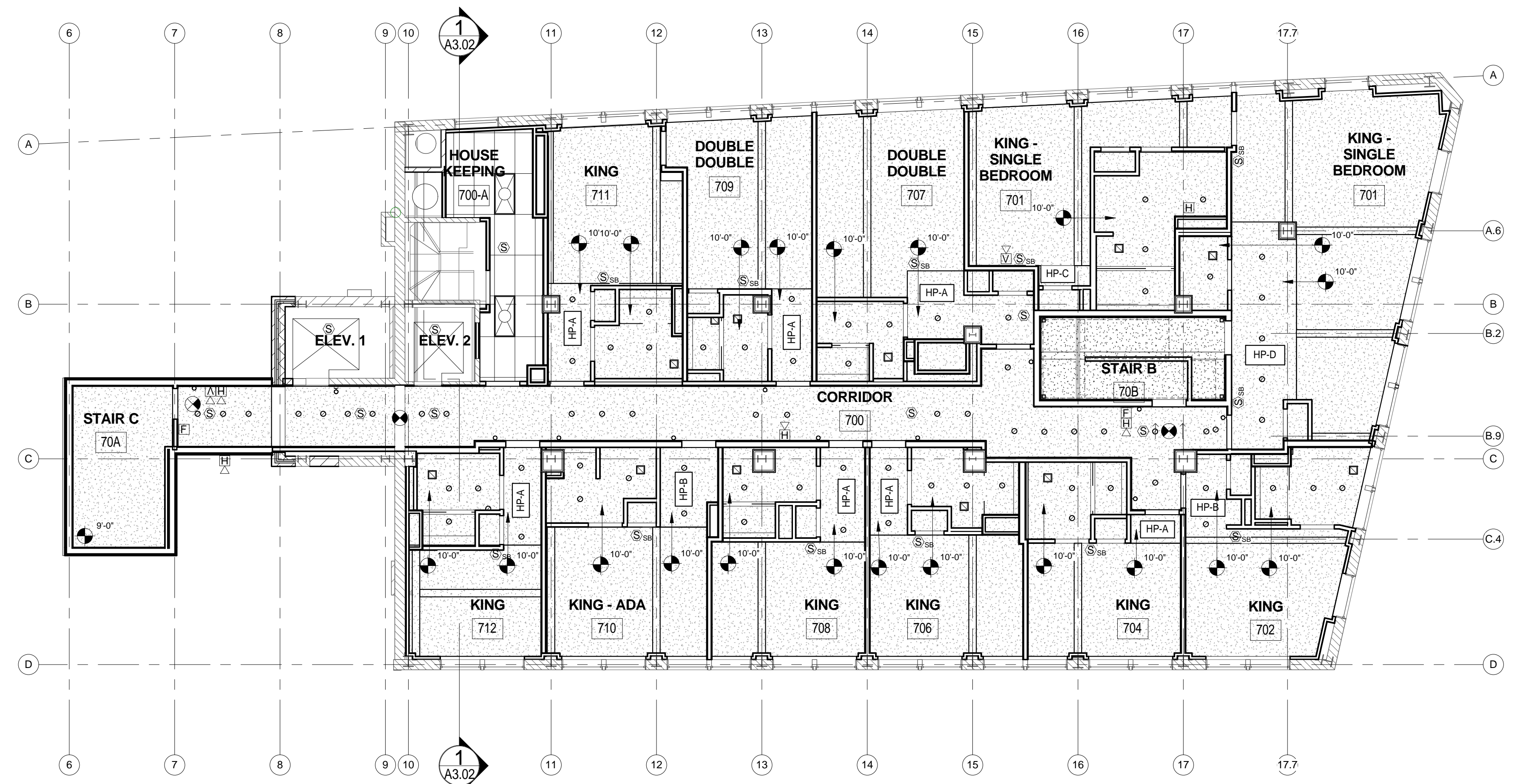
**LIFE SAFETY**



**AV**

**GENERAL CEILING NOTES**

- FULL BUILDING: EXISTING BUILDING STRUCTURE IS COMPRISED OF A MIXTURE OF CONDITIONS INCLUDING: FIRE RATED STEEL & CONCRETE AND UNTREATED STRUCTURE. WORK IS TO COMPLY WITH CONSTRUCTION RATING REQUIREMENTS SHOWN IN LIFESAFETY DOCUMENTS, COLUMN, WALL AND FLOOR UL ASSEMBLIES, TO PROVIDE FOR A FULL AND COMPLETE RATED BUILDING ASSEMBLIES AS NOTED GOVERNING CODES, REGULATIONS AND RATED ASSEMBLIES, INCLUDING BUT NOT LIMITED TO THE IBC, NFPA, AND BY THE AHJ. SEE A4.03-A4.10 FOR GENERAL CONSTRUCTION CONDITIONS.
- SUBBASEMENT - TREAT PARTIALLY EXPOSED BEAMS WITH INTUMESCENT FIRE RATED PAINT.
- LEVEL 1 RESTAURANT - REMOVE PLASTER & LATH BEAM WRAP TO CONCRETE BEAM WRAP. PLUG, PATCH AND RESTORE EXG CONCRETE TO LEVEL SPECIFIED BY RESTAURANT DESIGNER. RESTORATION TO INCLUDE CASTING OF CAPITALS AT COLUMNS TREATED WITH INTUMESCENT PAINT (5B & 5C).
- LEVELS 2-7 GUESTROOMS ARE COMPRISED OF 3 GENERAL CEILING AREAS: ENTRY AREAS, BATHROOM BLOCK (BATHROOM, CLOSET, MISC), AND LOFTED GENERAL AREAS. CEILINGS IN ENTRY AND BATHROOM AREAS ARE TYPICALLY NOTED ON RCP.
- LEVELS 2-7 GUESTROOMS, WHERE CLOSETS OCCUR AWAY FROM THE BATHROOM BLOCK PROVIDE GYPSUM CEILING AT THE HEIGHT OF THE BATHROOM WHETHER SHOWN OR NOT.
- LEVELS 2-7 GUESTROOMS, IN LOFTED GENERAL AREAS APPLY 5/8" GYPSUM BD ON 1/2" HAT CHANNEL CEILINGS APPLIED TO DECK, TYPICALLY.
- LEVELS 2-7 GUESTROOMS: IN ADDITION OR IN CONCORD WITH STRUCTURE RATING WORK WRAP ALL EXISTING BEAMS WITH GYPSUM AS SHOWN IN TYPICAL INTERIOR DETAILS, SEE TYPICAL GUEST ROOM BEAM WRAP IN A-400 SERIES.



**1 | 7TH FLOOR - REFLECTED CEILING PLAN**

1/8" = 1'-0"

0 2' 4' 8' 16'

Prepared For:  
**119 Development, LLC**  
P.O. Box 7486  
Portland, ME 04112

Consultant:  
**ARCHETYPE Architects**  
48 Union Wharf Portland, Maine 04101  
(207) 772-6022 Fax (207) 772-4056

Project:  
**PRESS HOTEL**  
390 CONGRESS STREET  
PORTLAND, ME 04101

Revisions:  
2 13\_09-09 60% Marriott Sub. & Pric.  
3 13\_10-14 Issue for Bid & Marriott Revw

Date: 14 OCT 13  
Scale: 1/8" = 1'-0"  
**SEVENTH FLOOR RCP**

**A7.05**